



ZAGREBAČKA BURZA
THE ZAGREB STOCK EXCHANGE

Trading Summary
Third quarter of 2006

Zagreb, October 2006

The Zagreb Stock Exchange information

1. INTERNET

<http://www.zse.hr/>

2. REUTERS

ZAGSTOCK, ZAGSTOCL - daily shares prices

ZAGSTOCLM - daily bonds prices

SEZI – daily certificates prices

.CRBEX - CROBEX index

.CRBEX (chain) - CROBEX index constituents-by RIC code

This report or any part thereof may be reprinted, copied or redistributed in any way only with prior written permission and full credit.

The information contained herein is compiled and collected with care, but total accuracy and/or completeness is not guaranteed by the Zagreb Stock Exchange (ZSE). This publication is issued with the express condition to which everyone purchasing and making use thereof assents that no liability shall be incurred by ZSE. This publication is issued for information purposes only and is not to be construed in any way as an invitation to purchase or sell any security mentioned herein. ZSE recommends to any potential investor to seek professional advice before investing.

Copyright © 2006 by The Zagreb Stock Exchange
Zagreb
Ksaver 200
Croatia

All rights reserved.

Contents:

- 1. TRADING STATISTICS 1**
 - 1.1. GENERAL CHARACTERISTICS 1
 - 1.2. TRADING OVERVIEW BY MONTH..... 2
 - 1.3. SHARES PERFORMANCE 4
 - 1.4. BONDS PERFORMANCE 6
 - 1.5. CERTIFICATES PERFORMANCE 7
 - 1.6. COMMERCIAL PAPERS PERFORMANCE 8
 - 1.7. STOCKS WITH THE LARGEST MARKET CAPITALIZATION 9
 - 1.8. MOST ACTIVE STOCKS BY TURNOVER..... 9
 - 1.9. BEST PERFORMING STOCKS..... 10
 - 1.10. UNDERPERFORMING STOCKS 10
 - 1.11. FINANCIAL RATIOS 10
 - 1.12. TOP 10 MEMBERS BY EQUITY TURNOVER..... 11
 - 1.13. TOP 10 MEMBERS BY BONDS TURNOVER 11
 - 1.14. TOP 10 MEMBERS BY TOTAL TURNOVER 11
- 2. PRICES AND VOLUMES FOR THE MOST ACTIVE STOCKS..... 12**
- 3. LISTED SHARES 16**
- 4. LISTED BONDS 20**
- 5. LISTED CERTIFICATES 21**
- 6. LISTED COMMERCIAL PAPERS 22**
- 7. METHODOLOGICAL REMARKS 23**

1. Trading statistics

1.1. General characteristics

(Turnover and Market Capitalization in Kunas)

	Second quarter of 2006	Third quarter of 2006	% change
Regular turnover:			
Equities	3.783.434.348	2.325.826.846	-38,5
Bonds	104.643.286	74.184.878	-29,1
Certificates	3.815.666	8.497.582	122,7
Commercial papers	3.168.000	486.200	-84,7
Reported turnover	1.669.594.510	820.404.427	-50,9
Institutional turnover	7.931.528.780	6.627.661.363	-16,4
Total	13.496.184.591	9.857.061.296	-27,0
Regular volume:			
Equities	6.044.711	3.920.877	-35,1
Bonds	62.786.209	48.797.122	-22,3
Certificates	4.852.665	11.464.294	136,2
Commercial papers	3.300.000	500.000	-84,8
Reported volume	1.148.125.000	502.500.000	-56,2
Institutional volume	4.897.172.214	4.476.902.150	-8,6
Total	6.122.280.799	5.044.084.443	-17,6
CROBEX[©]	2.713,5	3.163,8	16,6
CROBIS[©]	101,1439	100,7586	-0,4
Total number of trades	31.365	39.400	25,6
Number of securities traded	148	151	2,0
Market Capitalization			
Equities	110.838,6	132.085,0	19,2
Bonds	36.529,2	37.808,8	3,5
Total	147.367,8	169.893,8	15,3
Number of trading days	60	64	6,7
Number of listed shares			
Official Market	7	7	0,0
JDD Market	129	131	1,6
Parallel Market	63	64	1,6
Daily average:			
Turnover	224.936.410	154.016.583	-31,5
Volume	102.038.013	78.813.819	-22,8
Number of trades	523	616	17,8
Exchange rate HRK:USD	5,790297	5,824713	0,6

1.2. Trading Overview by Month

(Turnover and Market Capitalization in millions of Kunas)

	July	August	September
Regular turnover:			
Equities	603.393.609	719.424.561	1.003.008.675
Bonds	14.008.272	33.641.326	26.535.280
Certificates	750.000	5.067.609	2.679.973
	486.200	0	0
Reported turnover*	128.919.542	302.658.671	388.826.214
Institutional turnover**	1.676.055.591	2.439.525.721	2.512.080.050
Total	2.423.613.214	3.500.317.889	3.933.130.193
Regular volume:			
Equities	944.693	1.365.952	1.610.232
Bonds	10.663.199	19.547.688	18.586.235
Certificates	1.000.000	6.858.771	3.605.523
	500.000	0	0
Reported volume*	87.500.000	192.900.000	222.100.000
Institutional volume**	1.184.820.150	1.529.571.000	1.762.511.000
Total	1.285.428.042	1.750.243.411	2.008.412.990
CROBEX[©]	2.871,6	3.099,5	3.163,8
CROBIS[©]	101,5081	102,0854	100,7586
Total number of trades	10.338	13.389	15.673
Number of securities traded	104	103	138
Market Capitalization			
Equities	115.360,7	127.165,4	132.085,0
Bonds	37.320,0	37.842,4	37.808,8
Total	152.680,71	165.007,74	169.893,78
Number of trading days	21	22	21
Daily average:			
Turnover	115.410.153	159.105.359	187.291.914
Volume	61.210.859	79.556.519	95.638.714
Number of trades	492	609	746

*Reported trades are trades with bonds greater than 3,000,000 HRK in accordance with the Zagreb Stock Exchange Rules.

**Institutional trades are trades reported to the Exchange by institutional investors in accordance with Securities Law.

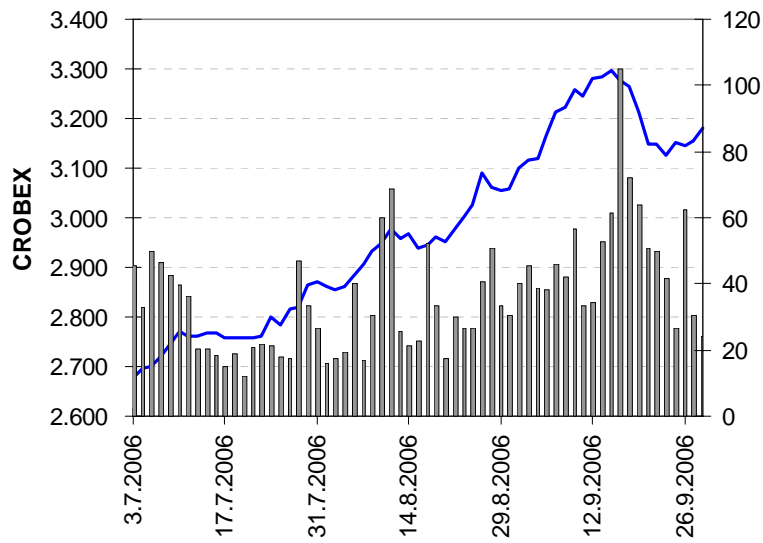


Chart 1: Zagreb Stock Exchange equity index CROBEX[®] and equity turnover

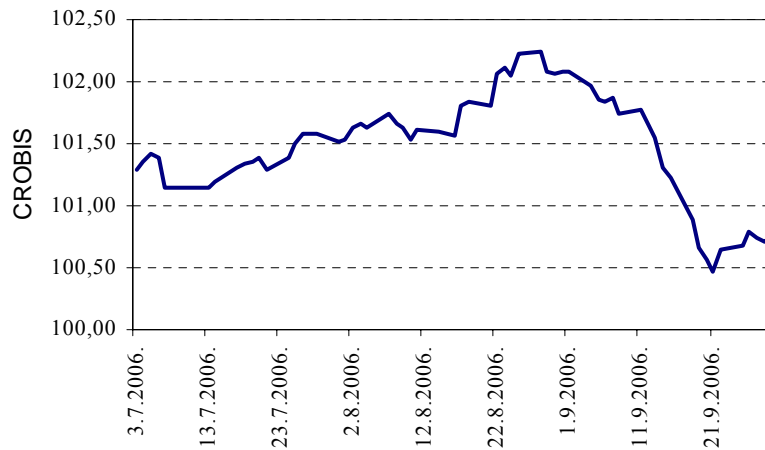


Chart 2: Zagreb Stock Exchange bond index CROBIS[®]

1.3. Shares performance

(All prices and turnover in Kunas, market capitalization in millions of Kunas)

	High	Low	Last	Average	Date	Net Change	Volume	Turnover	Mkt Cap
Official Market									
CROS-P-A	8.800,00	6.100,00	8.300,00	7.414,63	26.9.2006	36,1	184	1.364.292	72,6
CROS-R-A	8.999,00	6.650,00	8.690,00	7.911,07	29.9.2006	37,9	2.154	17.040.440	2.673,0
ISTT-R-A	375,00	286,02	360,00	351,65	28.9.2006	20,0	44.600	15.683.651	1.683,0
MDKA-R-A	12.000,00	10.700,01	11.500,00	11.557,13	29.9.2006	9,5	1.139	13.163.575	347,2
PLVA-R-A	855,00	755,32	802,80	799,73	29.9.2006	5,6	626.725	501.213.663	14.926,2
PODR-R-A	460,00	375,01	425,10	408,52	29.9.2006	6,5	201.395	82.273.490	2.304,0
VIRO-R-A	664,99	529,99	618,99	604,23	29.9.2006	16,8	148.541	89.753.474	858,3
JDD Market									
ADCH-R-A	149,50	149,50	149,50	149,50	24.7.2006	0,0	67	10.017	93,2
ADPL-R-A	180,00	133,00	180,00	146,55	13.9.2006	37,4	11.320	1.658.910	529,1
ADRS-P-A	4.300,00	3.411,12	4.100,00	3.858,95	29.9.2006	17,1	84.934	327.756.211	2.781,5
ARNT-R-A	360,00	305,00	330,00	336,41	29.9.2006	6,5	78.073	26.264.387	720,2
ATLS-R-A	137,50	108,00	134,00	125,93	29.9.2006	18,3	82.420	10.379.400	255,2
ATPL-R-A	935,00	810,00	915,00	886,61	29.9.2006	8,9	108.161	95.896.843	1.246,5
AUHR-R-A	47.000,00	33.499,97	43.000,00	40.512,04	28.9.2006	30,3	255	10.330.569	769,1
BD62-R-A	450,01	400,00	425,00	430,47	29.9.2006	-1,2	37.702	16.229.580	319,6
BDMR-R-A	3.150,00	2.500,00	3.150,00	2.854,19	28.9.2006	26,0	243	693.568	312,9
BLSC-R-A	740,00	549,12	660,00	616,34	29.9.2006	15,8	33.001	20.339.891	768,4
CEBA-P-A	975,00	621,05	900,00	885,21	29.9.2006	41,7	39.014	34.535.483	56,3
CEBA-R-A	1.300,00	900,00	1.100,00	1.104,70	28.9.2006	22,2	10.719	11.841.289	312,7
CRBT-R-A	349,99	280,00	301,00	310,66	20.9.2006	13,2	1.071	332.718	54,2
DLKV-R-A	850,00	635,00	794,00	752,34	29.9.2006	22,5	112.545	84.671.561	1.821,3
ELKA-R-A	117,00	106,51	110,00	113,09	29.9.2006	3,3	13.392	1.514.537	169,0
ELPR-R-A	350,00	261,01	330,00	304,40	29.9.2006	13,8	65.632	19.978.471	110,5
ERNT-R-A	2.332,00	2.000,00	2.236,00	2.255,01	27.9.2006	9,1	5.405	12.188.343	2.977,6
EXCL-R-A	346,00	201,00	300,00	255,82	25.9.2006	-14,0	417	106.679	142,5
FNVC-R-A	550,00	465,01	513,01	500,98	29.9.2006	4,9	21.114	10.577.631	316,9
FRNK-R-A	2.450,00	2.150,00	2.448,98	2.303,54	29.9.2006	8,4	2.999	6.908.318	1.046,1
HDEL-R-A	650,00	139,02	550,00	502,26	29.9.2006	303,4	12.734	6.395.741	343,1
HDUZ-R-A	1.000,00	1.000,00	1.000,00	1.000,00	27.9.2006	0,0	45	45.000	267,2
HPDG-R-A	240,00	240,00	240,00	240,00	31.7.2006	77,1	31	7.440	87,9
HRDH-R-A	270,00	195,00	240,00	220,07	29.9.2006	14,8	8.908	1.960.395	202,3
HUPZ-R-A	2.079,00	1.700,00	1.940,00	1.938,40	29.9.2006	10,9	14.614	28.327.735	995,9
IGH-R-A	4.200,00	3.281,00	3.800,00	3.855,61	29.9.2006	12,8	11.572	44.617.072	602,6
ILRA-R-A	500,00	500,00	500,00	500,00	9.8.2006	0,0	30	15.000	124,7
JAKT-R-A	101,00	90,01	95,00	99,93	22.9.2006	-5,0	85.139	8.507.882	75,2
JDBA-R-A	13.990,00	9.050,00	12.999,00	11.945,25	29.9.2006	38,3	1.606	19.184.068	473,2
JDKM-R-A	350,00	300,00	300,00	308,19	22.9.2006	2,7	564	173.817	65,2
JDPL-R-A	274,00	215,10	260,00	257,33	29.9.2006	11,1	74.399	19.144.944	425,5
JMNC-R-A	65.000,00	55.000,00	65.000,00	60.555,48	21.9.2006	16,1	142	8.598.879	1.438,2
JNAF-R-A	3.297,00	2.565,00	3.100,00	2.968,87	29.9.2006	12,7	4.409	13.089.750	2.302,8
KABA-P-A	310,00	100,00	310,00	286,04	29.9.2006	55,0	658	188.215	3,4
KABA-R-A	430,00	263,07	340,00	325,11	29.9.2006	30,8	122.298	39.760.830	242,8
KBZ-R-A	365,00	203,00	318,00	273,61	29.9.2006	47,9	48.234	13.197.245	419,7
KNZM-R-A	44.000,00	23.500,00	40.000,00	31.307,23	29.9.2006	60,0	436	13.649.952	5.045,1
KODT-P-A	1.389,00	1.050,00	1.250,00	1.205,11	29.9.2006	25,0	530	638.707	38,4
KODT-R-A	1.500,00	900,50	1.201,01	1.186,36	18.9.2006	20,1	4.970	5.896.231	116,6
KOEI-R-A	600,00	396,01	559,50	467,56	29.9.2006	34,8	126.118	58.967.226	1.408,3

	High	Low	Last	Average	Date	Net Change	Volume	Turnover	Mkt Cap
KRAS-R-A	674,99	610,05	655,00	650,03	29.9.2006	0,8	12.216	7.940.738	899,7
KSST-R-A	110,00	110,00	110,00	110,00	26.9.2006	0,0	18	1.980	12,5
KTKS-R-A	50,00	50,00	50,00	50,00	5.9.2006	0,0	106	5.300	33,5
LKPC-R-A	1.880,00	1.560,00	1.800,00	1.750,40	29.9.2006	12,5	20.954	36.677.941	400,7
LLRB-R-A	330,00	280,02	295,01	302,53	29.9.2006	-1,7	5.801	1.754.964	37,5
LPML-R-A	660,00	610,00	630,00	638,81	6.9.2006	3,3	582	371.785	44,6
LURA-R-A	650,00	400,00	590,00	460,63	29.9.2006	47,5	34.490	15.887.246	1.770,0
MAGE-R-A	40,00	40,00	40,00	40,00	20.7.2006	0,0	47	1.880	7,2
MDPL-R-A	120,00	120,00	120,00	120,00	25.9.2006	15,4	262	31.440	18,7
MLNR-R-A	800,00	510,00	739,99	705,66	29.9.2006	39,6	16.986	11.986.404	144,6
MMBA-R-A	2.100,00	1.351,00	2.000,00	1.687,22	29.9.2006	42,9	1.883	3.177.042	639,5
PBZ-R-A	1.190,00	761,01	1.071,05	1.030,41	29.9.2006	35,6	92.569	95.383.654	17.843,7
PLAG-R-A	4.400,00	3.500,06	4.000,00	3.943,96	29.9.2006	14,3	3.654	14.411.238	2.185,3
PTKM-R-A	239,98	133,10	210,52	185,19	29.9.2006	54,8	517.498	95.836.414	520,3
PUNT-R-A	54,00	33,50	47,50	44,85	29.9.2006	25,1	148.811	6.673.653	12,7
RIBA-R-A	605,00	485,01	590,00	537,12	29.9.2006	18,0	59.998	32.226.382	7.813,1
RIZO-R-A	349,00	195,00	349,00	313,37	29.9.2006	79,0	856	268.241	47,4
SDBA-R-A	279,97	204,90	250,00	234,20	25.9.2006	19,0	7.966	1.865.635	84,2
SLDM-R-A	210,00	100,02	130,02	138,54	29.9.2006	-35,0	213.291	29.550.042	200,6
SMNS-R-A	1.500,00	1.430,00	1.430,00	1.472,00	15.9.2006	-4,7	50	73.600	1.352,6
TDZ-R-A	2.000,00	1.800,00	1.900,00	1.865,50	21.9.2006	5,6	104	194.012	617,1
THNK-R-A	4.700,00	3.305,00	4.599,99	4.351,08	29.9.2006	39,2	8.750	38.071.951	871,5
TISK-R-A	410,00	371,00	374,01	394,86	29.9.2006	-6,5	10.317	4.073.822	892,6
TNPL-R-A	3.479,00	3.040,00	3.200,00	3.266,23	29.9.2006	5,6	10.854	35.451.660	2.004,4
TOZ-R-A	487,00	176,01	350,00	329,59	29.9.2006	105,9	29.946	9.869.823	86,4
TRFM-R-A	1.118,99	936,11	1.055,00	1.008,40	28.9.2006	7,7	3.123	3.149.247	38,0
TRMD-R-A	104,00	98,00	104,00	101,32	11.9.2006	4,0	3.398	344.280	24,0
ULPL-R-A	2.840,00	2.380,00	2.700,00	2.685,58	29.9.2006	10,7	5.780	15.522.633	506,3
ULJN-R-A	270,00	140,01	270,00	216,16	28.9.2006	74,2	18.088	3.909.988	603,8
VPIK-R-A	320,00	101,00	270,00	263,92	29.9.2006	167,3	45.288	11.952.382	384,0
ZABA-P-B	5.300,00	4.000,00	5.101,99	4.594,35	12.9.2006	16,5	64	294.038	57,8
ZABA-R-A	8.550,00	6.100,00	7.600,00	7.428,84	29.9.2006	22,6	3.935	29.232.475	21.839,4
ZAPI-R-A	3.899,00	3.630,09	3.780,00	3.753,39	28.9.2006	4,7	1.892	7.101.408	2.345,3
ZLJS-R-A	650,00	400,00	650,00	525,00	20.9.2006	160,0	30	15.750	73,6
Parallel Market									
BRNK-R-A	225,00	195,02	195,02	209,44	28.9.2006	-4,9	271	56.759	25,8
HARG-R-A	267,00	266,00	266,00	266,88	31.7.2006	-0,4	26	6.939	49,5
HRBC-R-A	355,00	335,00	355,00	336,18	23.8.2006	17,2	85.717	28.815.995	359,3
IPKT-R-A	148,00	118,00	148,00	123,51	28.8.2006	46,5	5.354	661.261	83,6
ISAP-R-B	1.620,00	1.620,00	1.620,00	1.620,00	4.9.2006	1,3	98	158.760	6,6
ISAP-R-C	18.200,00	18.200,00	18.200,00	18.200,00	4.9.2006	1,1	6	109.200	2,2
KMKA-R-A	650,00	180,00	600,00	362,41	15.9.2006	100,0	580	210.198	57,2
KODS-R-A	48,00	21,20	48,00	28,52	29.9.2006	138,8	1.399	39.901	5,1
KORF-R-A	155,00	155,00	155,00	155,00	5.9.2006	24,7	111	17.205	1.257,6
MLDN-R-A	300,00	210,03	300,00	285,24	25.9.2006	-14,3	858	244.734	28,8
MMTZ-R-A	18.100,00	17.000,00	18.100,00	17.003,65	29.9.2006	6,4	1.006	17.105.671	145,3
NACE-R-A	1.600,00	1.550,00	1.550,00	1.597,85	22.9.2006	-3,1	209	333.950	998,7
PRFC-R-A	70,98	70,98	70,98	70,98	3.8.2006	-4,1	100	7.098	277,7
RIVP-R-A	580,00	400,00	540,00	486,60	29.9.2006	31,4	52.405	25.500.012	1.972,9
SLBA-R-A	2.500,00	2.300,00	2.500,00	2.415,68	20.7.2006	6,4	714	1.724.799	1.449,8
SLPF-R-A	74,05	70,00	74,05	73,52	19.9.2006	6,1	158.913	11.682.510	247,8
STBA-R-A	1.350,00	1.100,00	1.210,00	1.159,95	14.9.2006	-4,4	529	613.615	5.508,9
SUNH-R-A	262,99	223,02	237,00	242,76	28.9.2006	-8,8	58.543	14.212.131	1.258,7

	High	Low	Last	Average	Date	Net Change	Volume	Turnover	Mkt Cap
VDMV-R-A	140,00	120,00	135,00	127,49	27.9.2006	-1,5	1.159	147.766	5,5
VLBT-R-A	16,00	16,00	16,00	16,00	4.9.2006	0,0	712	11.392	54,5
ZLAR-R-A	410,00	366,02	400,00	396,38	29.9.2006	9,9	20.901	8.284.788	220,9
ZVZD-R-A	7.500,00	7.500,00	7.500,00	7.500,00	1.9.2006	0,0	1.000	7.500.000	751,9

1.4. Bonds performance

(All prices in % of par value, turnover in Kunas)

	High	Low	Last	Date	Volume	Turnover
Regular trades						
FNOI-D-071A	97,16	97,16	97,16	8.9.2006	29.638	2.118
FNOI-D-077A	93,10	93,10	93,10	8.9.2006	29.638	2.030
FNOI-D-081A	89,14	89,14	89,14	8.9.2006	29.638	1.943
FNOI-D-087A	85,39	85,39	85,39	8.9.2006	29.638	1.861
FNOI-D-091A	82,14	81,76	82,14	8.9.2006	29.638	1.785
FNOI-D-097A	79,07	78,34	79,07	8.9.2006	29.638	1.714
FNOI-D-101A	76,06	75,01	76,06	8.9.2006	29.638	1.644
FNOI-D-107A	73,21	71,87	73,21	8.9.2006	29.638	1.578
FNOI-D-111A	70,42	68,81	70,42	8.9.2006	29.638	1.513
FNOI-D-117A	67,79	65,94	67,79	8.9.2006	29.638	1.453
FNOI-D-121A	65,21	63,13	65,21	8.9.2006	29.638	1.393
FNOI-D-127A	62,75	60,48	62,75	8.9.2006	29.638	1.337
FNOI-D-131A	60,36	57,91	60,36	8.9.2006	29.638	1.283
FNOI-D-137A	58,10	55,48	58,10	8.9.2006	29.638	1.231
FNOI-D-141A	55,89	53,13	55,89	8.9.2006	29.638	1.181
FNOI-D-147A	53,80	50,90	53,80	8.9.2006	29.638	1.134
FNOI-D-151A	51,75	48,74	51,75	8.9.2006	29.638	1.087
FNOI-D-157A	49,81	46,70	49,81	8.9.2006	29.638	1.044
FNOI-D-161A	47,92	44,71	47,92	8.9.2006	29.638	1.001
FNOI-D-167A	46,11	42,83	46,11	8.9.2006	29.638	961
FNOI-D-171A	44,36	41,01	44,36	8.9.2006	29.638	922
FNOI-D-177A	42,70	39,30	42,70	8.9.2006	29.638	885
FNOI-D-181A	41,07	37,63	41,07	8.9.2006	29.638	849
FNOI-D-187A	39,54	36,05	39,54	8.9.2006	29.638	815
FNOI-D-191A	38,03	34,52	38,03	8.9.2006	29.638	782
FNOI-D-197A	36,61	33,08	36,61	8.9.2006	29.638	750
HYBA-O-086A	103,85	103,85	103,85	21.7.2006	95.000	98.658
MTEL-O-097A	102,70	102,70	102,70	10.8.2006	1.000.000	1.027.000
PLVA-O-115A	103,50	103,35	103,50	30.8.2006	176.000	1.328.709
RHMF-O-077A	99,50	99,40	99,40	11.8.2006	23.143	167.304
RHMF-O-085A	104,00	102,75	103,00	27.9.2006	6.771.349	6.995.660
RHMF-O-08CA	105,25	104,90	105,00	21.9.2006	1.097.700	8.423.750
RHMF-O-103A	107,55	106,80	106,80	19.9.2006	264.900	284.616
RHMF-O-125A	112,45	110,80	111,50	20.9.2006	526.300	4.259.841
RHMF-O-137A	99,60	98,20	98,35	26.9.2006	35.000.000	34.694.350
RHMF-O-142A	106,70	105,00	106,70	5.9.2006	1.539.000	11.951.747
RHMF-O-157A	98,60	97,20	98,60	24.8.2006	201.000	1.444.133
RHMF-O-15CA	104,50	103,20	103,20	19.9.2006	1.032.142	1.065.588
RHMF-O-19BA	110,20	110,20	110,20	24.8.2006	300.000	2.409.229
TOTAL					48.797.122	74.184.878
Reported trades*						
PLVA-O-115A	103,30	103,30	103,30	27.9.2006	1.000.000	7.672.558

	High	Low	Last	Date	Volume	Turnover
RHMF-O-077A	99,70	99,70	99,70	18.9.2006	1.000.000	7.384.607
RHMF-O-085A	103,30	103,10	103,10	9.8.2006	15.000.000	15.477.500
RHMF-O-08CA	105,70	105,05	105,37	13.9.2006	11.000.000	84.590.801
RHMF-O-103A	107,52	106,40	106,40	19.9.2006	85.000.000	91.182.500
RHMF-O-125A	112,50	110,65	112,10	26.9.2006	12.000.000	98.218.780
RHMF-O-137A	99,40	98,05	98,05	29.9.2006	75.000.000	74.070.000
RHMF-O-142A	107,05	104,55	106,75	25.9.2006	8.300.000	64.672.737
RHMF-O-157A	99,00	96,40	99,00	22.9.2006	4.500.000	32.770.578
RHMF-O-15CA	105,30	103,10	103,35	27.9.2006	283.700.000	295.759.600
RHMF-O-19BA	110,45	110,10	110,20	15.9.2006	6.000.000	48.604.766
TOTAL					502.500.000	820.404.427
Institutional trades**						
ATGR-O-077A	101,10	101,10	101,10	16.8.2006	110.000	808.300
GDZD-O-119A	104,10	103,30	104,10	26.9.2006	1.100.000	8.264.857
MTEL-O-097A	103,50	102,30	102,30	14.9.2006	12.200.000	12.594.600
NEXE-O-116A	100,15	99,05	99,05	26.9.2006	105.620.000	105.285.350
PLVA-O-115A	103,50	102,65	103,30	27.9.2006	4.010.000	30.451.065
PODR-O-115A	99,25	99,07	99,25	15.9.2006	17.000.000	16.851.200
RBA-O-112A	98,05	97,30	98,00	8.9.2006	57.765.000	56.490.023
RHMF-O-077A	99,90	98,95	99,15	28.9.2006	54.270.000	394.186.714
RHMF-O-085A	103,40	102,75	102,80	22.9.2006	287.345.000	295.960.337
RHMF-O-08CA	105,70	104,20	104,30	29.9.2006	30.962.000	237.130.072
RHMF-O-103A	107,70	106,19	106,45	22.9.2006	998.190.000	1.071.549.370
RHMF-O-125A	112,65	110,39	111,60	29.9.2006	70.859.500	579.349.978
RHMF-O-137A	99,65	97,94	98,10	29.9.2006	660.235.000	653.010.395
RHMF-O-142A	107,27	104,34	106,70	29.9.2006	55.529.150	432.705.074
RHMF-O-157A	99,15	97,30	99,15	29.9.2006	45.216.500	327.451.968
RHMF-O-15CA	105,30	102,95	103,35	29.9.2006	2.035.640.000	2.125.598.010
RHMF-O-19BA	110,70	106,65	110,25	28.9.2006	34.300.000	273.585.455
TOTAL					4.470.352.150	6.621.272.768
BONDS TOTAL					5.021.649.272	7.515.862.073

*Reported trades are trades with bonds greater than 3,000,000 HRK in accordance with the Zagreb Stock Exchange Rules.

**Institutional trades are trades reported to the Exchange by institutional investors in accordance with Securities Law.

1.5. Certificates performance

(All prices in % of par value, turnover in Kunas)

Symbol	High	Low	Last	Date	Volume	Turnover
RHMF-A-A	75,00	72,50	74,00	18.9.2006	11.266.192	8.339.101
RHMJ-A-A	80,00	80,00	80,00	29.9.2006	198.102	158.482

1.6. Commercial papers performance

(All prices in % of par value, turnover in Kunas)

Symbol	High	Low	Last	Date	Volume	Turnover
Regular turnover						
MGMA-M-707A	97,24	97,24	97,24	5.7.2006	500.000	486.200
TOTAL					500.000	486.200
Institutional turnover						
INGR-M-710A	97,24	97,24	97,24	13.7.2006	300.000	291.720
MGMA-M-707A	97,55	97,55	97,55	7.7.2006	6.250.000	6.096.875
TOTAL					6.550.000	6.388.595

1.7. Stocks with the largest Market Capitalization

(Market capitalization in millions of Kunas)

	Symbol	Market Cap. 30.9.2006.	Percentage (%)	Cumulative percentage (%)
1	ZABA-R-A	21.839,4	16,5	16,5
2	PBZ-R-A	17.843,7	13,5	30,0
3	PLVA-R-A	14.926,2	11,3	41,3
4	RIBA-R-A	7.813,1	5,9	47,3
5	STBA-R-A	5.508,9	4,2	51,4
6	KNZM-R-A	5.045,1	3,8	55,2
7	ERNT-R-A	2.977,6	2,3	57,5
8	ADRS-P-A	2.781,5	2,1	59,6
9	CROS-R-A	2.673,0	2,0	61,6
10	ZAPI-R-A	2.345,3	1,8	63,4
	Others	48.331,3	36,6	100,0
	Total	132.085,0		

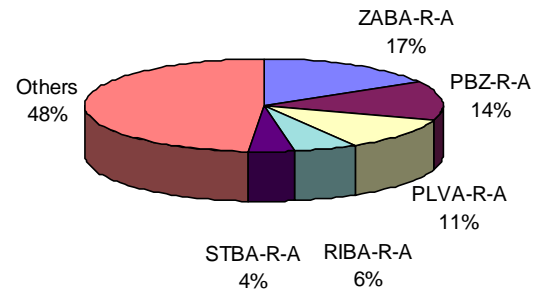


Chart 3: Market Capitalization

1.8. Most active stocks by turnover

(Turnover in Kunas)

	Symbol	Turnover	Percentage (%)	Cumulative percentage (%)
1	PLVA-R-A	501.213.663	21,5	21,5
2	ADRS-P-A	327.756.211	14,1	35,6
3	ATPL-R-A	95.896.843	4,1	39,8
4	PTKM-R-A	95.836.414	4,1	43,9
5	PBZ-R-A	95.383.654	4,1	48,0
6	VIRO-R-A	89.753.474	3,9	51,8
7	DLKV-R-A	84.671.561	3,6	55,5
8	PODR-R-A	82.273.490	3,5	59,0
9	KOEI-R-A	58.967.226	2,5	61,6
10	IGH-R-A	44.617.072	1,9	63,5
	Others	849.457.240	36,5	100,0
	Total	2.325.826.846		

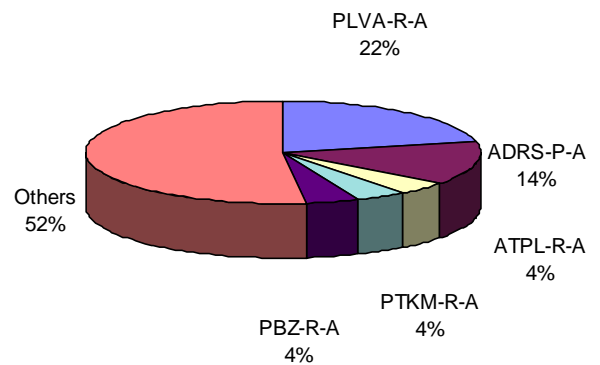


Chart 4: Distribution of equity turnover

1.9. Best performing stocks

Symbol	Second quarter of 2006	Third quarter of 2006	% change
HDEL-R-A	136,34	550,00	303,40
VPIK-R-A	101,00	270,00	167,33
ZLJS-R-A	250,00	650,00	160,00
KODS-R-A	20,10	48,00	138,81
TOZ-R-A	170,00	350,00	105,88
KMKA-R-A	300,00	600,00	100,00
RIZO-R-A	195,00	349,00	78,97
HPDG-R-A	135,50	240,00	77,12
ULJN-R-A	155,00	270,00	74,19
KNZM-R-A	25.000,00	40.000,00	60,00

1.10. Underperforming stocks

Symbol	Second quarter of 2006	Third quarter of 2006	% change
SLDM-R-A	200,00	130,02	-34,99
MLDN-R-A	350,00	300,00	-14,29
EXCL-R-A	349,00	300,00	-14,04
SUNH-R-A	260,00	237,00	-8,85
TISK-R-A	400,00	374,01	-6,50
JAKT-R-A	100,00	95,00	-5,00
BRNK-R-A	205,00	195,02	-4,87
SMNS-R-A	1.500,00	1.430,00	-4,67
STBA-R-A	1.265,06	1.210,00	-4,35
PRFC-R-A	74,00	70,98	-4,08

1.11. Financial ratios

(Price, earnings and dividends in Kunas)

Symbol	Price 30.9.2006.	Earnings per share	P/E ratio	Dividend for 2005	Dividend yield
CROS-P-A	8.300,00	-	-	112,00	1,3%
CROS-R-A	8.690,00	364,71	23,8	112,00	1,3%
ISTT-R-A	360,00	9,29	38,8	5,30	1,5%
MDKA-R-A	11.500,00	412,37	27,9	0,00	0,0%
PLVA-R-A	802,80	-26,96	-29,8	12,00	1,5%
PODR-R-A	425,10	11,74	36,2	5,00	1,2%
VIRO-R-A	618,99	70,74	8,8	10,00	1,6%

1.12. Top 10 Members by Equity Turnover

Rang	Member
1	Auctor d.o.o.
2	Raiffeisenbank Austria d.d.
3	Fima vrijednosnice d.o.o.
4	Zagrebačka banka d.d.
5	Erste vrijednosni papiri d.o.o.
6	Interkapital vrijednosni papiri d.o.o.
7	InterFinance d.o.o.
8	Hrvatska poštanska banka d.d.
9	Hypo Alpe-Adria-Bank d.d.
10	I.C.F. d.o.o.

1.13. Top 10 Members by Bonds Turnover

Rang	Member
1	Interkapital vrijednosni papiri d.o.o.
2	I.C.F. d.o.o.
3	Raiffeisenbank Austria d.d.
4	InterFinance d.o.o.
5	Erste vrijednosni papiri d.o.o.
6	Fintrade d.o.o.
7	Hypo Alpe-Adria-Bank d.d.
8	Zagrebačka banka d.d.
9	HVB Splitska banka d.d.
10	Hrvatska poštanska banka d.d.

1.14. Top 10 Members by Total Turnover

Rang	Member
1	Interkapital vrijednosni papiri d.o.o.
2	Raiffeisenbank Austria d.d.
3	Auctor d.o.o.
4	I.C.F. d.o.o.
5	Fima vrijednosnice d.o.o.
6	Zagrebačka banka d.d.
7	Erste vrijednosni papiri d.o.o.
8	InterFinance d.o.o.
9	Hypo Alpe-Adria-Bank d.d.
10	Hrvatska poštanska banka d.d.

2. Prices and volumes for the most active stocks

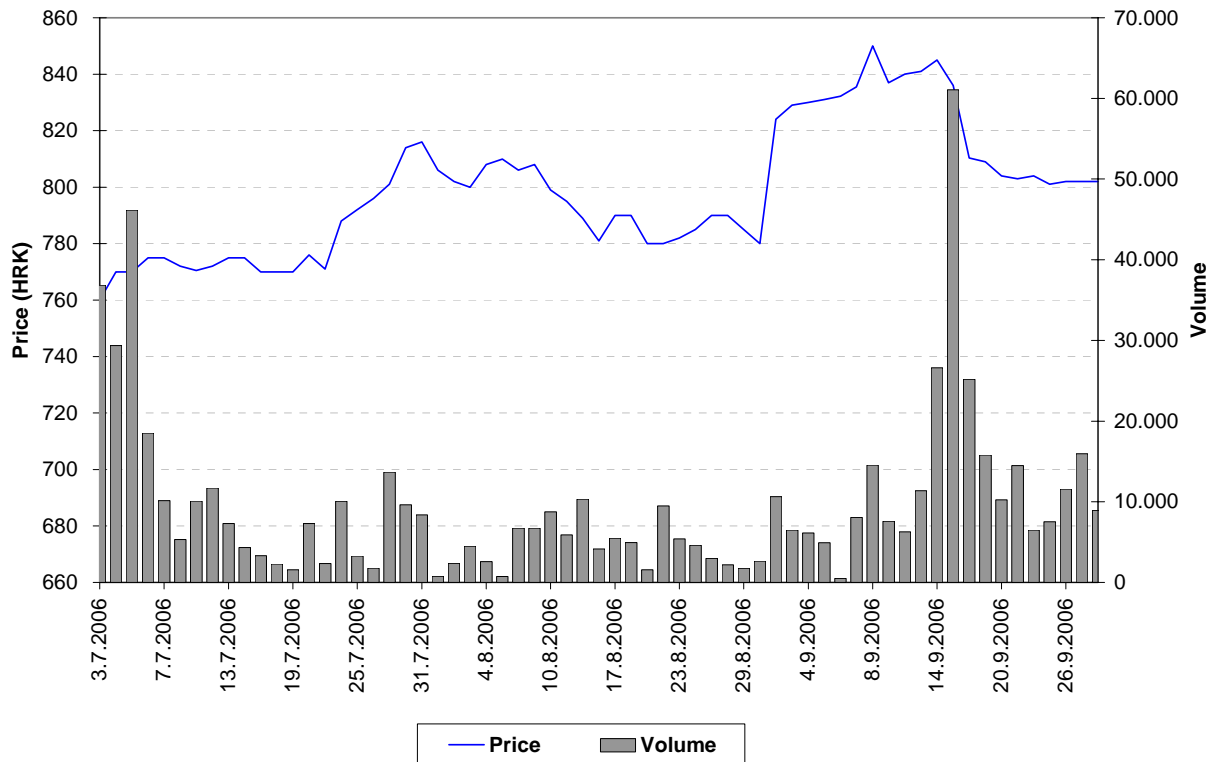


Chart 5: Pliva d.d.

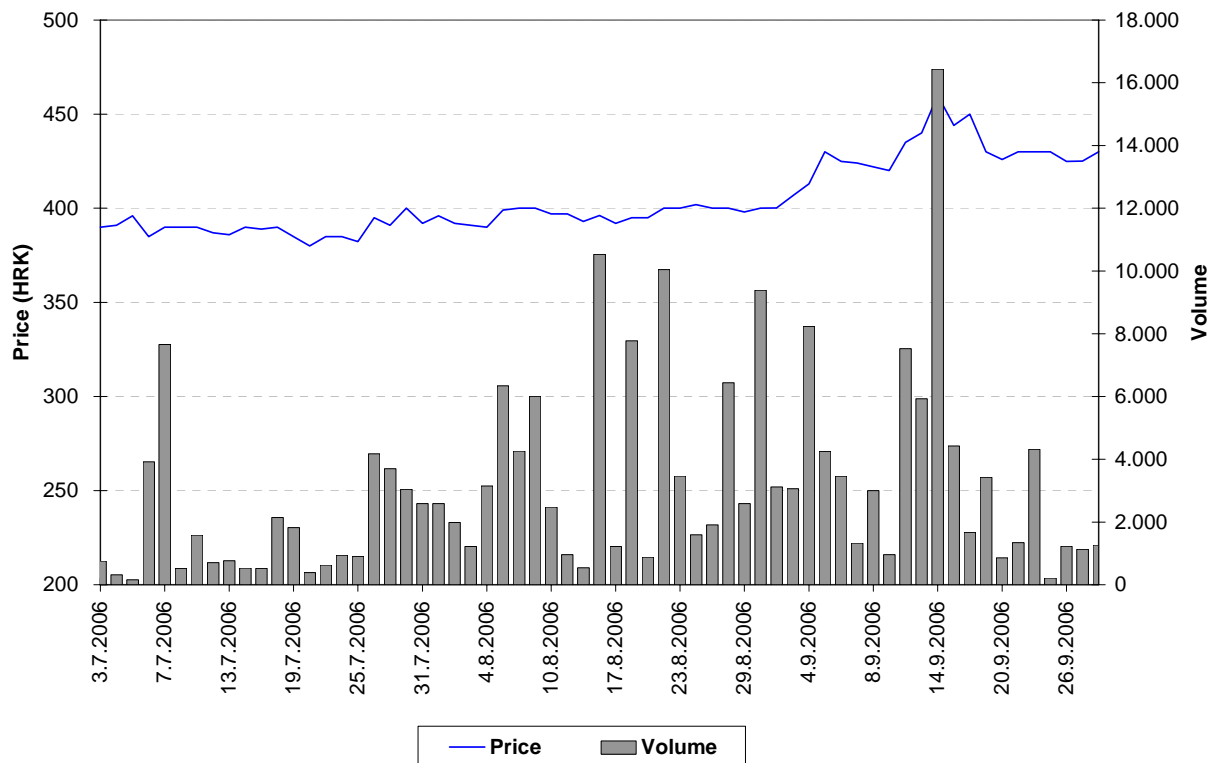


Chart 6: Podravka d.d.

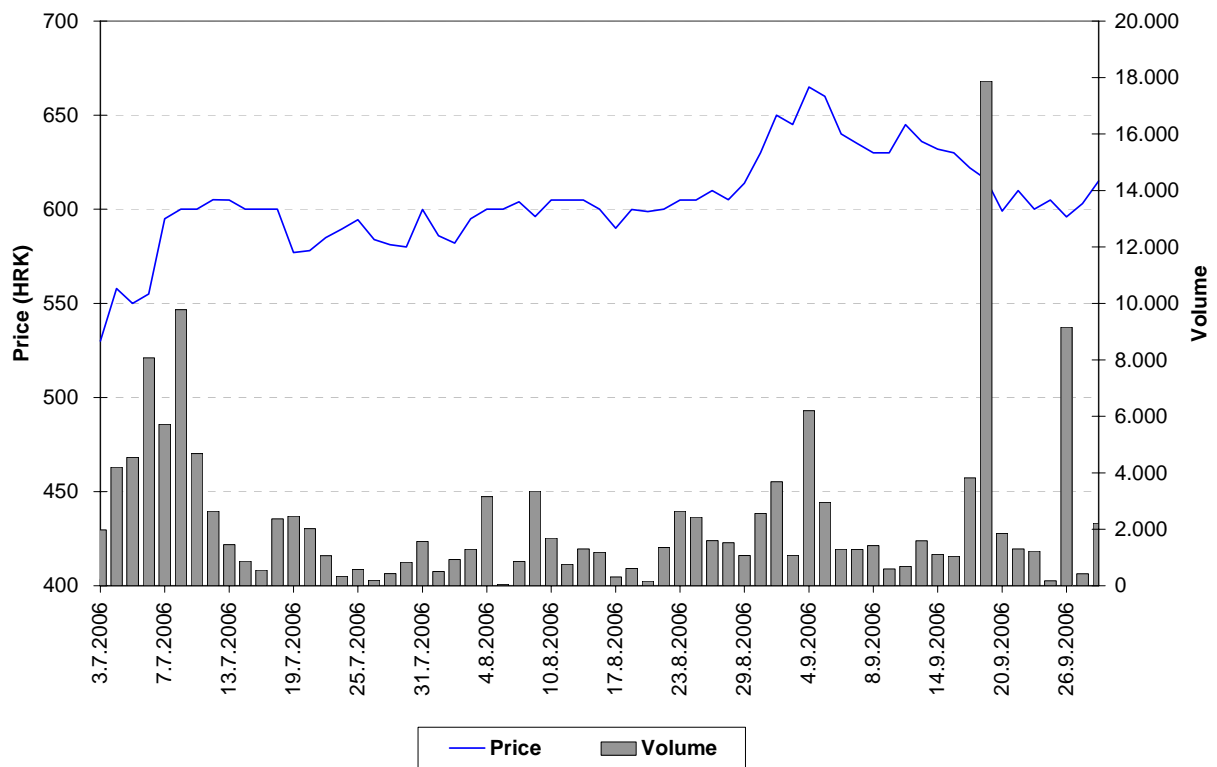


Chart 7: VIRO industrija šećera d.d.

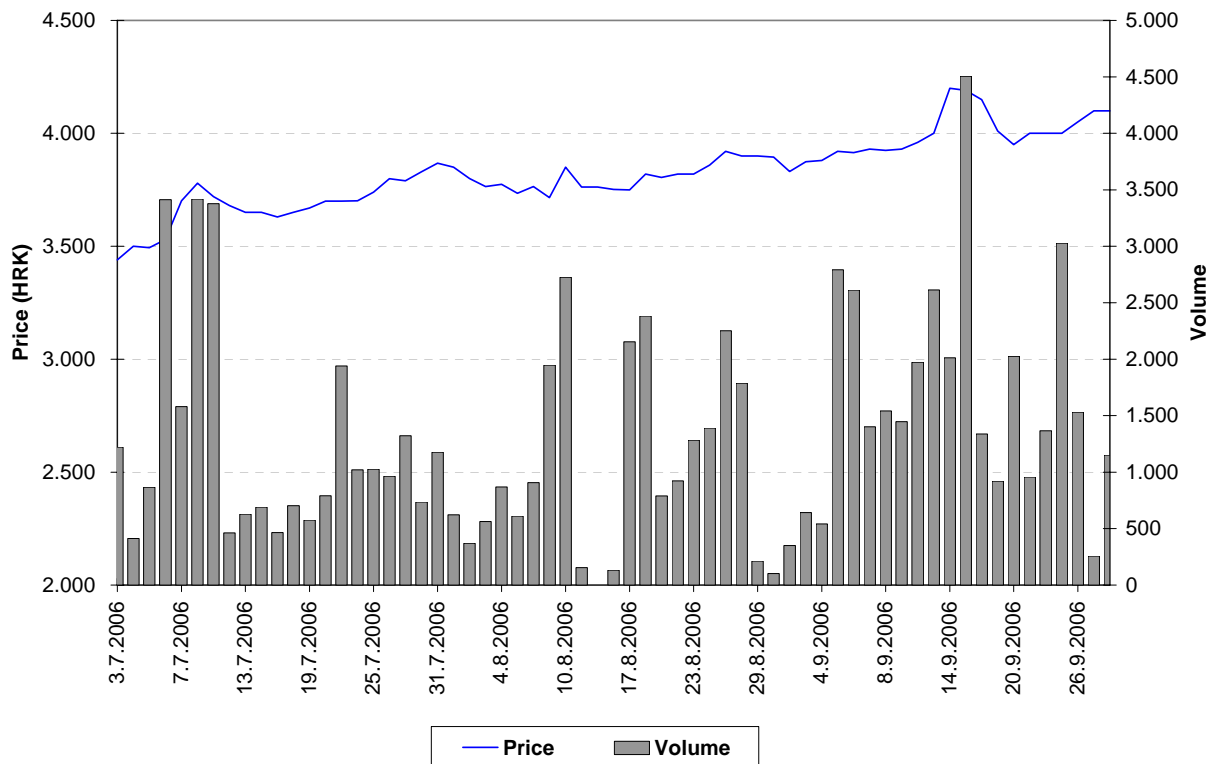


Chart 8: ADRIS GRUPA d.d., preferred stocks

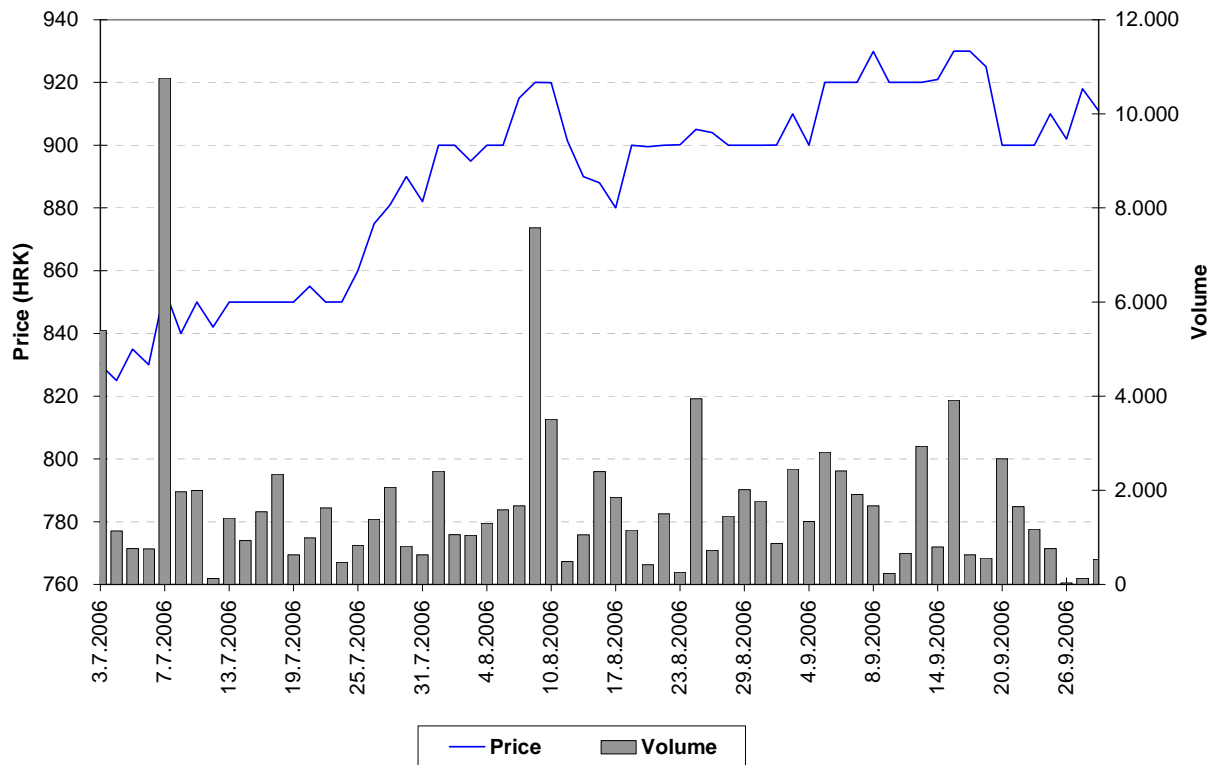


Chart 9: Atlantska plovidba d.d.

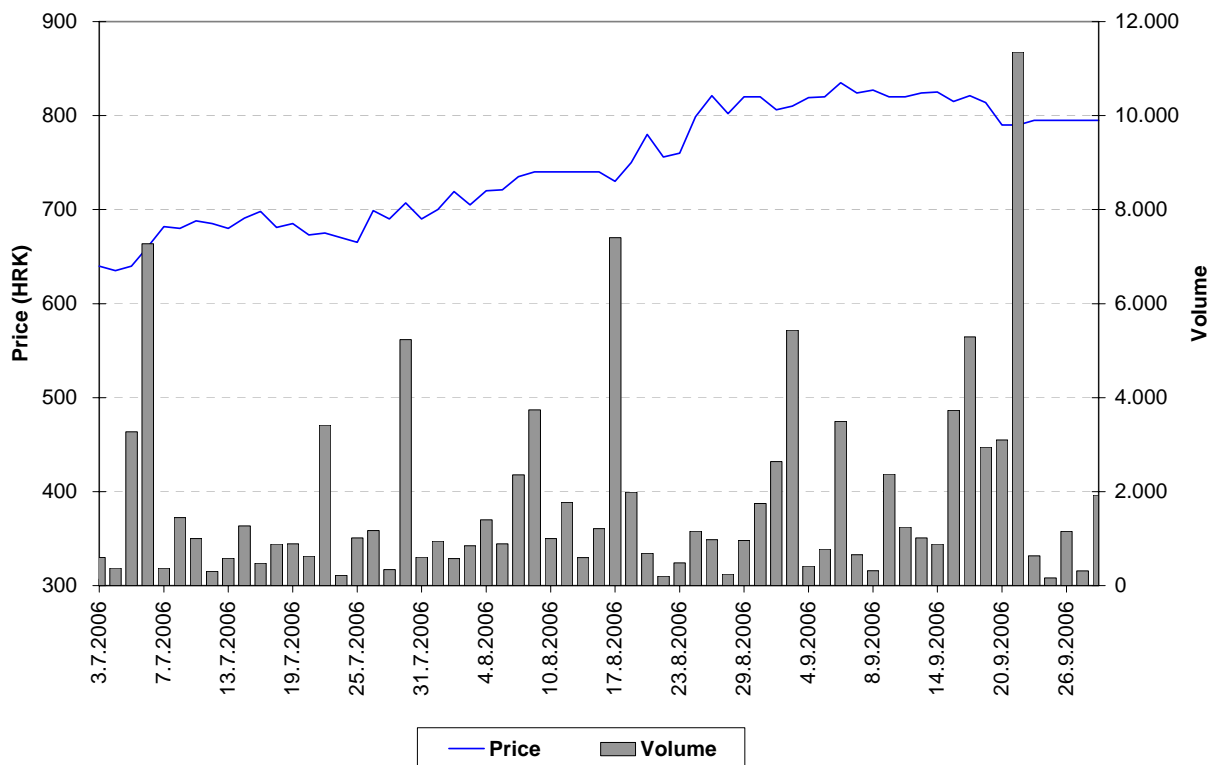


Chart 10: Dalekovod d.d.

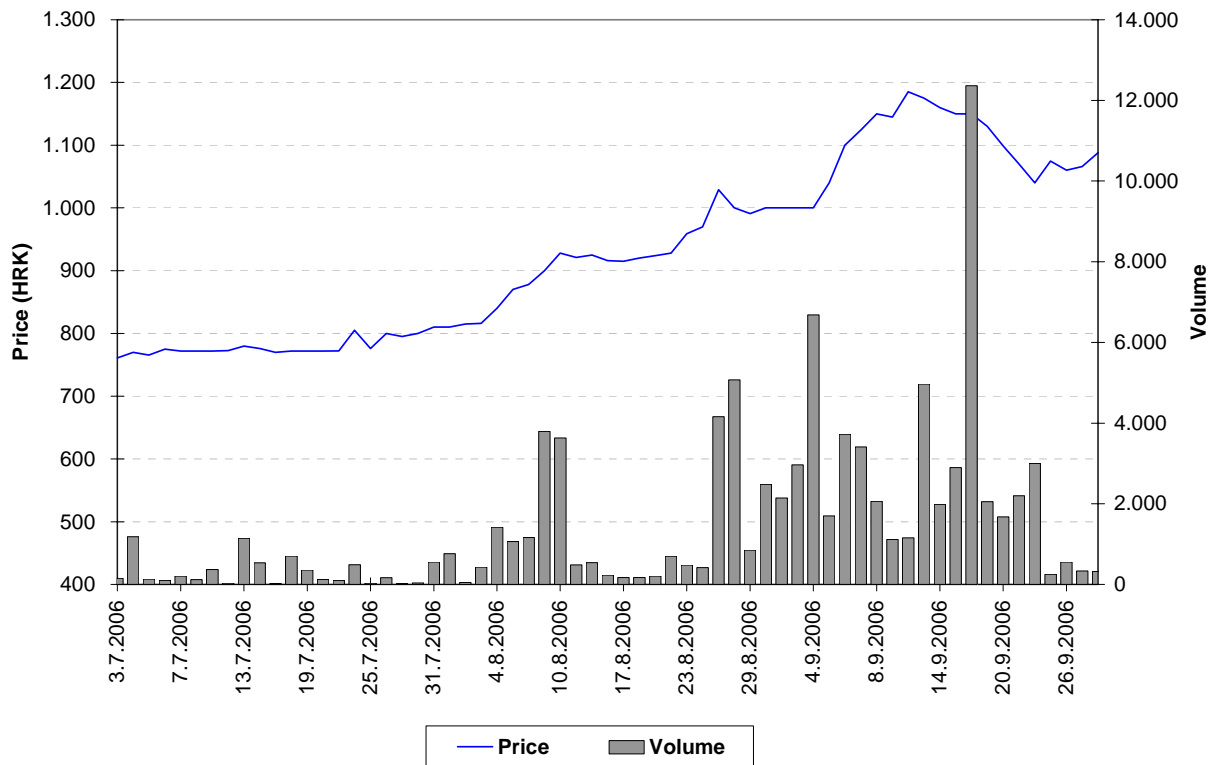


Chart 11: Privredna banka Zagreb d.d.

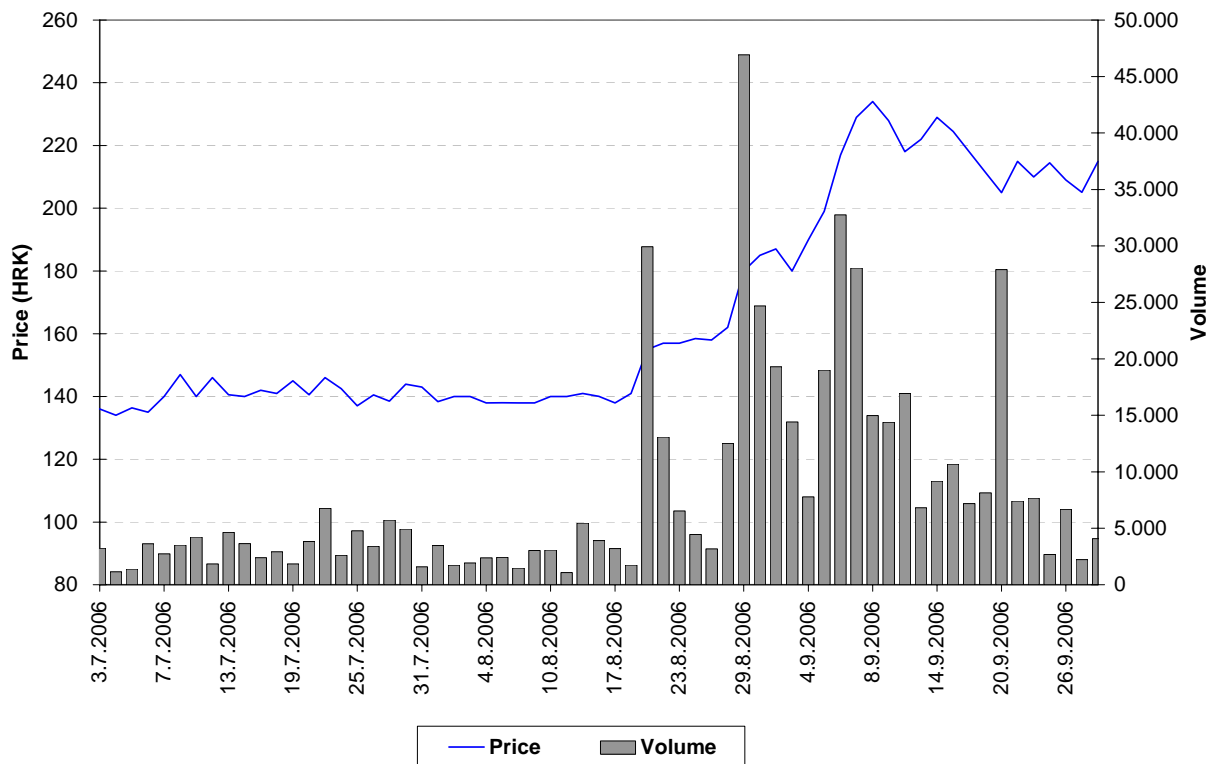


Chart 12: Petrokemija d.d.

3. Listed shares

Symbol	Company name	Shares outstanding	Nominal value
	Official Market		
	Common stocks		
CROS-R-A	Croatia osiguranje d.d.	307.598	1400 HRK
ISTT-R-A	Istraturist Umag d.d.	4.674.995	100 HRK
MDKA-R-A	Medika d.d.	30.194	2.000 HRK
PLVA-R-A	PLIVA d.d.	18.592.648	100 HRK
PODR-R-A	Podravka prehrambena industrija d.d.	5.420.003	300 HRK
VIRO-R-A	VIRO TVORNICA ŠEĆERA d.d.	1.386.667	100 HRK
	Preferred stocks		
CROS-P-A	Croatia osiguranje d.d.	8.750	1400 HRK
	Market JDD		
	Common stocks		
ADCH-R-A	Adriachem d.d.	623.578	300 HRK
ADPL-R-A	AD Plastik d.d.	2.939.709	100 HRK
ADRS-R-A	ADRIS GRUPA d.d.	961.590	100 HRK
AMDN-R-A	Apartmani Medena d.d.	765.376	300 HRK
ARNT-R-A	Arenaturist d.d.	2.182.500	300 HRK
ATLS-R-A	Atlas turistička agencija d.d.	1.904.315	50 HRK
ATPL-R-A	Atlantska plovidba d.d.	1.362.260	300 HRK
AUHR-R-A	Auto-Hrvatska d.d.	17.885	3700 HRK
BD62-R-A	Badel 1862 d.d.	752.106	300 HRK
BDMR-R-A	Brodmerkur d.d.	99.331	1900 HRK
BLSC-R-A	Belišće d.d.	1.164.312	300 HRK
CEBA-R-A	Centar banka d.d.	284.249	400 HRK
CHBL-R-A	Chromos boje i lakovi d.d.	287.740	300 HRK
CRAL-R-A	Croatia Airlines d.d.	4.349.279	200 HRK
CRBT-R-A	Croatia Baterija d.d.	180.090	300 HRK
DALS-R-A	Dalma d.d.	1.225.790	100 DEM
DIOK-R-A	DIOKI d.d.	4.042.058	500 HRK
DKVS-R-A	Đakovština d.d.	793.021	300 HRK
DLKV-R-A	Dalekovod	2.293.812	100 HRK
DLMC-R-A	Dalmacijacement d.d.	1.700.000	700 HRK
DMUS-R-A	Domus d.d.	428.6762	100 HRK
DRNJ-R-A	Drvenjača d.d.	223.990	300 HRK
DTR-R-A	Domaća tvornica rublja d.d.	107.850	100 DEM
ELKA-R-A	EIG d.d.	1.588.320	300 HRK
ELKP-R-A	Elektroprojekt d.d.	89.800	100 DEM
ELPR-R-A	Elektropromet d.d.	334.860	300 HRK
ERNT-R-A	Ericsson Nikola Tesla d.d.	1.331.650	100 HRK
EXCL-R-A	Excelsior d.d.	474.947	100 HRK
EXPD-R-A	Exportdrvo d.d.	159.064	400 HRK
FNVC-R-A	Finvest Corp d.d.	617.751	400 HRK
FRNK-R-A	Franck d.d.	427.170	600 HRK
GPDU-R-A	GP Dubrovnik d.d.	128.835	300 HRK
HBEL-R-A	Hotel Bellevue d.d.	43.834	300 HRK
HCRC-R-A	Hoteli Croatia d.d.	1.079.040	100 HRK

Symbol	Company name	Shares outstanding	Nominal value
HDEL-R-A	Hidroelektra niskogradnja d.d.	623.881	100 HRK
HDUZ-R-A	Hotel Dubrovnik d.d.	267.200	100 DEM
HMAM-R-A	Hoteli Makarska d.d.	1.119.470	200 HRK
HMST-R-A	Hoteli Maestral d.d.	515.720	200 HRK
HPDG-R-A	Hoteli Podgora d.d.	366.250	100 DEM
HRDH-R-A	Hrvatski Duhani d.d.	842.807	300 HRK
HTCP-R-A	Hoteli Tučepi d.d.	548.200	300 HRK
HUPZ-R-A	HUP Zagreb d.d.	513.333	400 HRK
IGH-R-A	Institut građevinarstva Hrvatske d.d.	158.580	400 HRK
IKBA-R-A	Istarska kreditna banka d.d.	57.487	1100 HRK
ILRA-R-A	Ilirija d.d.	249.386	390 HRK
INDG-R-A	Industrogradnja d.d.	125.072	2700 HRK
INGR-R-A	Ingra d.d.	40.000	1500 HRK
INKR-R-A	Inker Zaprešić d.d.	1.451.886	100 HRK
JAKT-R-A	Jadran kapital d.d.	791.636	100 HRK
JDBA-R-A	Jadranska banka d.d.	36.400	2000 HRK
JDKM-R-A	Jadrnkamen d.d.	217.330	100 DEM
JDPL-R-A	Jadroplov d.d.	1.636.674	360 HRK
JMNC-R-A	Jamnica d.d.	22.126	3800 HRK
JNAF-R-A	Jadranski naftovod d.d.	742.846	2700 HRK
KABA-R-A	Karlovačka banka d.d.	713.996	100 HRK
KBZ-R-A	Kreditna banka Zagreb d.d.	1.319.945	100 HRK
KNZM-R-A	Konzum d.d.	126.127	1800 HRK
KODT-R-A	Končar-distributivni i specijalni transformatori d.d.	97.094	300 HRK
KOEI-R-A	Končar elektroindustrija d.d.	2.517.053	400 HRK
KOSK-R-A	Končar Sklopna postrojenja d.d.	68.842	300 HRK
KRAS-R-A	Kraš d.d.	1.373.621	400 HRK
KSST-R-A	Kaštelanski staklenici d.d.	113.593	2500 HRK
KTKS-R-A	Koteks d.d.	669.467	100 HRK
LANO-R-A	Laguna Novigrad d.d.	322.790	370 HRK
LEDO-R-A	Ledo d.d.	220.170	380 HRK
LKPC-R-A	Luka Ploče d.d.	222.614	400 HRK
LKRI-R-A	Luka Rijeka d.d.	3.011.830	100 HRK
LLRB-R-A	Lola Ribar d.d.	127.139	400 HRK
LPML-R-A	Lipa Mill d.d.	70.833	720 HRK
LRH-R-A	Liburnia Riviera hoteli d.d.	302.641	3200 HRK
LURA-R-A	Lura d.d.	3.000.000	100 HRK
LVCV-R-A	Lavčević d.d.	465.656	300 HRK
MAGE-R-A	Marin Getaldić d.d.	180.608	50 DEM
MAIS-R-A	MAISTRA d.d.	10.257.393	-
MDPL-R-A	Mediteranska plovidba d.d.	156.126	370 HRK
MLNR-R-A	Mlinar d.d.	195.409	400 HRK
MMBA-R-A	Međimurska banka d.d.	319.750	400 HRK
NVBA-R-A	Nava banka d.d.	101.610	400 HRK
PABA-R-A	Partner banka d.d.	891.000	100 HRK
PBZ-R-A	Privredna banka Zagreb d.d.	16.660.000	100 HRK
PLAG-R-A	Plava Laguna d.d.	546.318	1800 HRK
PLTO-R-A	PLUTO d.d.	87.440	400 HRK
POBA-R-A	Požeška banka d.d.	320.000	200 HRK
PRHN-R-A	Prehrana d.d.	129.950	300 HRK

Symbol	Company name	Shares outstanding	Nominal value
PTKM-R-A	Petrokemija d.d.	2.471.721	400 HRK
PUNT-R-A	POUNJE Trikotaža d.d.	266.670	100 HRK
RIBA-R-A	Erste & Steiermarkische bank d.d.	13.242.478	100 HRK
RIZO-R-A	RIZ-ODAŠILJAČI d.d.	135.902	100 DEM
SDBA-R-A	BANKA SPLITSKO-DALMATINSKA d.d.	316.178	100 HRK
SLDM-R-A	Slobodna dalmacija d.d.	1.542.666	100 HRK
SLRS-R-A	Solaris d.d.	726.990	300 HRK
SMNS-R-A	Siemens d.d.	945.906	100 HRK
SSNC-R-A	Banka Sonic d.d.	61.800	500 HRK
TANG-R-A	TANG tvornica alata d.d.	145.000	500 HRK
TDZ-R-A	Tvornica duhana Zagreb d.d.	324.808	700 HRK
TEP-R-A	TEP Tvornica elektrotehničkih proizvoda d.d.	377.847	200 HRK
THNK-R-A	Tehnika d.d.	189.460	900 HRK
TISK-R-A	Tisak d.d.	2.386.587	100 HRK
TLM-R-A	TLM Tvornica lakih metala d.d.	1.840.082	300 HRK
TMPO-R-A	TEMPO d.d.	607.952	100 HRK
TNPL-R-A	Tankerska plovidba d.d.	626.385	600 HRK
TOZ-R-A	TOZ Penkala, Tvornica olovaka Zagreb d.d.	246.930	300 HRK
TRFM-R-a	TERRA FIRMA d.d.	36.000	1000 HRK
TRMD-R-A	Terra Mediterranea d.d.	230.997	100 HRK
TSTR-R-A	Tekstilstroj d.d.	114.442	300 HRK
ULPL-R-A	Uljanik plovidba d.d.	187.500	400 HRK
ULJN-R-A	ULJANIK d.d.	2.236.253	300 HRK
UNPP-R-A	Unijapapir d.d.	19.210	1800 HRK
VDKT-R-A	Viadukt d.d.	345.820	300 HRK
VJSN-R-A	Vjesnik d.d.	1.061.683	100 HRK
VPIK-R-A	VUPIK d.d.	1.422.127	400 HRK
ZABA-R-A	Zagrebačka banka d.d.	2.873.603	380 HRK
ZAPI-R-A	Zagrebačka pivovara d.d.	620.450	100 DEM
ZLJS-R-A	Željezara Split d.d.	113.216	1200 HRK
ZPKL-R-A	Zagrebačke pekarnice Klara d.d.	283.760	400 HRK
	Market JDD		
	Preferred stocks		
ADRS-P-A	ADRIS GRUPA d.d.	678.410	100 HRK
CEBA-P-A	Centar banka d.d.	62.500	400 HRK
CRAL-P-A	Croatia Airlines d.d.	17.590	100 HRK
CRAL-P-A1	Croatia Airlines d.d.	6.762	100 HRK
CRAL-P-A2	Croatia Airlines d.d.	13.025	100 HRK
CRAL-P-A3	Croatia Airlines d.d.	7.356	100 HRK
CRAL-P-A4	Croatia Airlines d.d.	6.464	100 HRK
HCRC-P-A	Hoteli Croatia d.d.	402.500	100 HRK
IKBA-P-A	Istarska kreditna banka d.d.	1.513	1100 HRK
KABA-P-A	Karlovačka banka d.d.	10.824	100 HRK
KODT-P-A	Končar-Distributivni i specijalni transformatori d	30.714	300 HRK
KOSK-P-A	Končar Sklopna postrojenja d.d.	40.718	300 HRK
PLAG-P-A	Plava Laguna d.d.	105.000	1000 HRK
PUNT-P-A	POUNJE TRIKOTAŽA d.d.	60.000	100 HRK
SDBA-P-A	BANKA SPLITSKO-DALMATINSKA d.d.	86.680	100 HRK
SSNC-P-A1	Banka Sonic d.d.	18.200	500 HRK
ZABA-P-B	Zagrebačka banka d.d.	11.325	540 HRK
	Parallel Market		

Symbol	Company name	Shares outstanding	Nominal value
	Common stocks		
ADHT-R-A	Adriatic d.d.	337.480	200 HRK
AGLG-R-A	AGROLAGUNA d.d.	28.487	2500 HRK
BLVD-R-A	Belvedere d.d.	349.080	300 HRK
BRNK-R-A	Brionka d.d.	132.410	100 DEM
CHAG-R-A	CHROMOS AGRO d.d.	125.977	500 HRK
CRLI-R-A	Croatia Lloyd d.d.	145.076	800 HRK
DKST-R-A	DK «STOLARIJA» d.d.	5.484	500 DEM
FRMC-R-A	Farmacija d.d.	16.835	1200 HRK
GHAD-R-A	Grand Hotel Adriatic d.d.	170.800	100 DEM
GHPA-R-A	Grand Hotel Park d.d.	139.895	400 HRK
GKBA-R-A	Gospodarsko-kreditna banka d.d.	627.720	100 HRK
HARG-R-A	Hoteli Argentina d.d.	185.960	300 HRK
HBRL-R-A	Hoteli Brela d.d.	525.270	100 DEM
HIMR-R-A	Imperial d.d.	635.855	200 DEM
HMLN-R-A	Hoteli Mlini d.d.	780.364	100 HRK
HMLN-R-A	Hoteli Mlini d.d.	780.364	100 HRK
HPB-R-A	Hrvatska poštanska banka d.d.	531.618	1.100 HRK
HPRK-R-A	Hotel Park d.d.	3.000	3000 HRK
HRBC-R-A	Rabac, ugostiteljstvo i turizam d.d.	1.012.220	100 DEM
HSRE-R-A	Hoteli Srebreno d.d.	482.000	100 HRK
HSTS-R-A	Hotel Split d.d.	36.323	3100 HRK
IKOM-R-A	IKOM Industrija komunalne opreme i mjerila d.d.	78.142	100 DEM
IMES-R-A	Imes d.d.	53.276	100 DEM
INFS-R-A	INFOSISTEM d.d.	53.557	400 HRK
IPKK-R-A	IPK KANDIT d.d.	543.490	100 HRK
IPKT-R-A	IPK TVORNICA ULJA ČEPIN d.d.	564.694	100 HRK
ISAP-R-A	Istarska autocesta d.d.	7.137	300 HRK
ISAP-R-B	Istarska autocesta d.d.	4.080	400 HRK
ISAP-R-C	Istarska autocesta d.d.	120	5000 HRK
JLSA-R-A	Jelsa d.d.	1.057.758	100 HRK
JTMN-R-A	Jadran d.d. Tvornica metalnog namještaja	173.560	300 HRK
KIM-R-A	KIM MLJEKARA KARLOVAC d.d.	104.472	300 HRK
KMKA-R-A	Kemika d.d.	95.259	300 HRK
KODS-R-A	Kordun Slunj d.d.	106.427	100 HRK
KORF-R-A	DOM HOLDING d.d.	8.113.359	100 HRK
KRDN-R-A	Kordun d.d. Karlovac	256.320	100 DEM
KRNA-R-A	Korana d.d.	200.406	200 HRK
LOVI-R-A	Lovinčić d.d.	419.506	200 HRK
MCML-R-A	MACROMEL d.d.	150.000	10000 HRK
MDSP-R-A	Modra Špilja d.d.	61.655	300 HRK
MLDN-R-A	Mladina d.d.	96.098	300 HRK
MMTZ-R-A	Montmontaža d.d.	8.028	3.500 HRK
MRNR-R-A	Mornar d.d.	52.510	100 DEM
MSLK-R-A	Moslavka d.d.	191.732	200 HRK
NACE-R-A	Našicecement d.d.	644.329	400 HRK
PRFC-R-A	PROFICIO d.d.	3.912.908	100 HRK
PSBA-R-A	Primus banka d.d.	101.700	500 HRK
PZDL-R-A	Požeška dolina d.d.	120.339	100 DEM
RIVP-R-A	Riviera Holding d.d.	3.653.517	300 HRK

Symbol	Company name	Shares outstanding	Nominal value
RTKO-R-A	Riječka tvornica konopa d.d.	130.260	200 HRK
SLPF-R-A	Slavonski ZIF, d.d.	3.346.418	100 HRK
SLPG-R-A	Solana Pag d.d.	75.846	100 DEM
SNHO-R-A	SN Holding d.d.	3.377.441	-
SPTH-R-A	Svpetrvs hoteli d.d.	395.148	100 HRK
STBA-R-A	Splitska banka d.d.	3.634.783	100 HRK
SUNH-R-A	Sunčani Hvar d.d.	5.310.971	100 HRK
TRUM-R-A	Trgopromet Umag d.d.	214.072	100 HRK
VDMV-R-A	Vodomaterijal d.d.	41.084	100 HRK
VLBT-R-A	Velebit – ZIF, d.d.	3.406.550	100 HRK
VLHO-R-A	VALAMAR GRUPA d.d.	3.377.441	-
ZITP-R-A	Žitoproizvod d.d.	109.300	400 HRK
ZLAR-R-A	Zlatni rat d.d.	552.319	100 DEM
ZVZD-R-A	ZVIJEZDA d.d.	100.257	2000 HRK
Parallel Market			
Preferred stocks			
GKBA-P-A	Gospodarsko-kreditna banka d.d.	220.000	100 HRK
SPTH-P-A	Svpetrvs hoteli d.d.	45.952	100 HRK

4. Listed Bonds

Symbol	Issuer	Nominal value	Issued volume	Interest	Maturity
Official Market					
ATGR-O-074A	ATLANTIC GRUPA d.o.o.	1 EUR	15.000.000	5,75%	13.7.2007
BLSC-O-091	Belišće d.d.	1 EUR	8.000.000	5,500%	14.1.2009
BNAI-O-22CA	Bina Istra d.d.	1 EUR	210.000.000	8%	15.12.2022
FNOI-D-071A	Fund for the Restitution of Deprived Property	5.11 EUR	300.000	\	1.1.2007
FNOI-D-077A	Fund for the Restitution of Deprived Property	5.11 EUR	300.000	\	1.7.2007
FNOI-D-081A	Fund for the Restitution of Deprived Property	5.11 EUR	300.000	\	1.1.2008
FNOI-D-087A	Fund for the Restitution of Deprived Property	5.11 EUR	300.000	\	1.7.2008
FNOI-D-091A	Fund for the Restitution of Deprived Property	5.11 EUR	300.000	\	1.1.2009
FNOI-D-097A	Fund for the Restitution of Deprived Property	5.11 EUR	300.000	\	1.7.2009
FNOI-D-101A	Fund for the Restitution of Deprived Property	5.11 EUR	300.000	\	1.1.2010
FNOI-D-107A	Fund for the Restitution of Deprived Property	5.11 EUR	300.000	\	1.7.2010
FNOI-D-111A	Fund for the Restitution of Deprived Property	5.11 EUR	300.000	\	1.1.2011
FNOI-D-117A	Fund for the Restitution of Deprived Property	5.11 EUR	300.000	\	1.7.2011
FNOI-D-121A	Fund for the Restitution of Deprived Property	5.11 EUR	300.000	\	1.1.2012
FNOI-D-127A	Fund for the Restitution of Deprived Property	5.11 EUR	300.000	\	1.7.2012
FNOI-D-131A	Fund for the Restitution of Deprived Property	5.11 EUR	300.000	\	1.1.2013
FNOI-D-137A	Fund for the Restitution of Deprived Property	5.11 EUR	300.000	\	1.7.2013
FNOI-D-141A	Fund for the Restitution of Deprived Property	5.11 EUR	300.000	\	1.1.2014
FNOI-D-147A	Fund for the Restitution of Deprived Property	5.11 EUR	300.000	\	1.7.2014
FNOI-D-151A	Fund for the Restitution of Deprived Property	5.11 EUR	300.000	\	1.1.2015
FNOI-D-157A	Fund for the Restitution of Deprived Property	5.11 EUR	300.000	\	1.7.2015
FNOI-D-161A	Fund for the Restitution of Deprived Property	5.11 EUR	300.000	\	1.1.2016
FNOI-D-167A	Fund for the Restitution of Deprived Property	5.11 EUR	300.000	\	1.7.2016

Symbol	Issuer	Nominal value	Issued volume	Interest	Maturity
FNOI-D-171A	Fund for the Restitution of Deprived Property	5.11 EUR	300.000	\	1.1.2017
FNOI-D-177A	Fund for the Restitution of Deprived Property	5.11 EUR	300.000	\	1.7.2017
FNOI-D-181A	Fund for the Restitution of Deprived Property	5.11 EUR	300.000	\	1.1.2018
FNOI-D-187A	Fund for the Restitution of Deprived Property	5.11 EUR	300.000	\	1.7.2018
FNOI-D-191A	Fund for the Restitution of Deprived Property	5.11 EUR	300.000	\	1.1.2019
FNOI-D-197A	Fund for the Restitution of Deprived Property	5.11 EUR	300.000	\	1.7.2019
GDKC-O-116A	City of Koprivnica	1 HRK	60.000.000	6,5%	29.6.2011
GDRI-O-167A	City of Rijeka	1 EUR	8.191.504	4,125%	18.7.2016
GDST-O-137A	City of Split	1 EUR	4.000.000	4,5625%	24.7.2013
GDZD-O-119A	City of Zadar	1 EUR	18.500.00	5,5%	1.9.2011
HBOR-O-112A	Croatian bank for reconstruction and development	1 EUR	300.000.000	4,875%	11.2.2011
HYBA-O-086A	Hypo Alpe-Adria Bank d.d.	1 HRK	150.000.000	6.500%	6.6.2008
MDKA-O-087A	Medika d.d.	1 EUR	16.500.000	4,5%	11.7.2008
NEXE-O-116A	NEXE GRUPA d.d.	1 HRK	750.000.000	5,500%	14.6.2011
PLVA-O-115A	PLIVA d.d.	1 EUR	75.000.000	5,750%	12.5.2011
PODR-O-072A	Podravka d.d.	1 EUR	27.000.000	5,000%	20.2.2007
PODR-O-115A	Podravka d.d.	1 HRK	375.000.000	5,125%	17.5.2011
RBA-O-112A	Raiffeisenbank Austria d.d.	1 HRK	600.000.000	4,125%	13.2.2011
RHMF-O-077A	Republic of Croatia	1 EUR	400.000.000	3,875%	7.7.2007
RHMF-O-085A	Republic of Croatia	1 HRK	1.000.000.000	6.125%	28.5.2008
RHMF-O-08CA	Republic of Croatia	1 EUR	200.000.000	6,875%	14.12.2008
RHMF-O-125A	Republic of Croatia	1 EUR	500.000.000	6.875%	23.5.2012
RHMF-O-137A	Republic of Croatia	1 HRK	2.500.000.000	4,5%	11.7.2013
RHMF-O-142A	Republic of Croatia	1 EUR	650.000.000	5,500%	10.2.2014
RHMF-O-15CA	Republic of Croatia	1 HRK	5.500.000.000	5,250%	15.12.2015
RHMF-O-157A	Republic of Croatia	1 EUR	350.000.000	4,250%	14.7.2015
RHMF-O-19BA	Republic of Croatia	1 EUR	200.000.000	5,375%	29.11.2019
Parallel market					
MTEL-O-097A	Metronet telekomunikacije d.d.	1 HRK	120.000.000	8,5%	28.7.2009

5. Listed Certificates

Symbol	Issuer	Nominal value	Issued volume
RHMJ-A-A	Republic of Croatia, Ministry of Construction	1 HRK	400.000.000
RHMF-A-A	Republic of Croatia, Ministry of Finance	1 HRK	644.750.000

6. Listed Commercial Papers

Symbol	Issuer	Nominal value	Issued volume
Official Market			
ATGR-M-641A	Atlantic grupa d.d.	1 HRK	30.000.000
BLSC-M-715A	Belišće d.d.	1 HRK	10.000.000
ISTT-M-650A	Istraturist Umag d.d.	1 HRK	70.000.000
MDKA-M-645A	Medika d.d.	1 HRK	40.000.000
Regular Market			
ATPL-M-713A	Atlantska plovidba d.d.	1 HRK	40.000.000
ATPL-M-739A	Atlantska plovidba d.d.	1 HRK	30.000.000
DLKV-M-704A	Dalekovod d.d.	1 HRK	75.000.000
INGR-M-647A	Ingra d.d.	1 HRK	25.000.000
INGR-M-710A	Ingra d.d.	1 HRK	30.000.000
JDGL-M-727A	Jadran Galenski laboratorij d.d.	1 HRK	30.000.000
LURA-M-645A	Lura d.d.	1 HRK	22.000.000
MGMA-M-707A	Magma	1 HRK	30.000.000
MGMA-M-738A	Magma	1 HRK	25.000.000
MSAN-M-718A	M SAN grupa d.o.o.	1 HRK	45.000.000
MSAN-M-737A	M SAN grupa d.o.o.	1 HRK	45.000.000
OPHR-M-702	Oktal Pharma d.o.o.	1 HRK	50.000.000
PBZC-M-716A	PBZ CARD d.o.o.	1 HRK	85.000.000

7. Methodological remarks

- 1) High is the highest trading price for the share in the selected period of time.
- 2) Low is the lowest trading price for the share in the selected period of time.
- 3) Last is the price of the last trade for the share in the selected period of time.
- 4) Market capitalization of the whole Exchange is calculated by multiplying the last price and the number of outstanding shares. If the share was not traded in the last month, one half of the market capitalization is added to the market capitalization of the whole Exchange. If the share was not traded in the last three months, only one quarter of the market capitalisation is added to the market capitalization of the whole Exchange.
- 5) The performance of shares is calculated with the last prices in the compared periods.
- 6) For the price curve daily closing prices are used.
- 7) Reported trades are trades with bonds greater then 3,000,000 HRK in accordance with the Zagreb Stock Exchange Rules.
- 8) Institutional trades are trades reported to the Zagreb Stock Exchange by intitutional investors in accordance with Securities Law.