



ZAGREBAČKA BURZA
THE ZAGREB STOCK EXCHANGE

Trading Summary
First quarter of 2006

Zagreb, April 2006

The Zagreb Stock Exchange information

1. INTERNET

<http://www.zse.hr/>

2. REUTERS

ZAGSTOCK, ZAGSTOCL - daily shares prices

ZAGSTOCLM - daily bonds prices

SEZI – daily certificates prices

.CRBEX - CROBEX index

.CRBEX (chain) - CROBEX index constituents-by RIC code

This report or any part thereof may be reprinted, copied or redistributed in any way only with prior written permission and full credit.

The information contained herein is compiled and collected with care, but total accuracy and/or completeness is not guaranteed by the Zagreb Stock Exchange (ZSE). This publication is issued with the express condition to which everyone purchasing and making use thereof assents that no liability shall be incurred by ZSE. This publication is issued for information purposes only and is not to be construed in any way as an invitation to purchase or sell any security mentioned herein. ZSE recommends to any potential investor to seek professional advice before investing.

Copyright © 2006 by The Zagreb Stock Exchange
Zagreb
Ksaver 200
Croatia

All rights reserved.

Contents:

- 1. TRADING STATISTICS 1**
 - 1.1. GENERAL CHARACTERISTICS 1
 - 1.2. TRADING OVERVIEW BY MONTH 2
 - 1.3. SHARES PERFORMANCE 4
 - 1.4. BONDS PERFORMANCE 6
 - 1.5. CERTIFICATES PERFORMANCE 7
 - 1.6. COMMERCIAL PAPERS PERFORMANCE 7
 - 1.7. STOCKS WITH THE LARGEST MARKET CAPITALIZATION 8
 - 1.8. MOST ACTIVE STOCKS BY TURNOVER 8
 - 1.9. BEST PERFORMING STOCKS 9
 - 1.10. UNDERPERFORMING STOCKS 9
 - 1.11. FINANCIAL RATIOS 9
 - 1.12. TOP 10 MEMBERS BY EQUITY TURNOVER 10
 - 1.13. TOP 10 MEMBERS BY BONDS TURNOVER 10
 - 1.14. TOP 10 MEMBERS BY TOTAL TURNOVER 10
- 2. PRICES AND VOLUMES FOR THE MOST ACTIVE STOCKS..... 11**
- 3. LISTED SHARES 14**
- 4. LISTED BONDS 18**
- 5. LISTED CERTIFICATES 19**
- 6. LISTED COMMERCIAL PAPERS 20**
- 7. METHODOLOGICAL REMARKS 21**

1. Trading statistics

1.1. General characteristics

(Turnover and Market Capitalization in millions of Kunas)

	Fourth quarter of 2005	First quarter of 2006	% change
Regular turnover:			
Equities	1.140.615.983	2.008.914.119	76,1
Bonds	209.836.686	227.533.220	8,4
Certificates	1.031.500	1.237.762	20,0
Reported turnover*	1.340.500.100	1.680.555.781	25,4
Institutional turnover**	7.921.394.575	8.193.684.961	3,4
Total	10.613.378.844	12.111.925.843	14,1
Regular volume:			
Equities	2.716.495	4.396.330	61,8
Bonds	85.215.167	67.193.605	-21,1
Certificates	1.370.000	1.621.523	18,4
Reported volume*	333.329.709	685.875.000	105,8
Institutional volume**	2.635.939.476	3.689.829.333	40,0
Total	3.058.570.847	4.448.915.791	45,5
CROBEX[©]	1.997,53	2.433,01	21,8
CROBIS[©]	105,82	103,87	-1,8
Total number of trades	24.685	35.125	42,3
Number of securities traded	145	127	-12,4
Market Capitalization			
Equities	80.724,5	101.135,7	25,3
Bonds	34.399,4	36.536,6	6,2
Total	115.123,9	137.672,3	19,6
Number of trading days	63	64	1,6
Number of listed shares			
Official Market	6	6	0,0
JDD Market	126	127	0,8
Parallel Market	62	62	0,0
Daily average:			
Turnover	168.466.331	189.248.841	12,3
Volume	48.548.744	69.514.309	43,2
Number of trades	392	549	40,1
Exchange rate HRK:USD			

*Reported trades are trades with bonds greater than 3,000,000 HRK in accordance with the Zagreb Stock Exchange Rules.

**Institutional trades are trades reported to the Exchange by institutional investors in accordance with Securities Law.

1.2. Trading Overview by Month

(Turnover and Market Capitalization in millions of Kunas)

	January	February	March
Regular turnover:			
Equities	301.092.374	554.326.473	1.153.495.273
Bonds	143.102.752	13.904.194	70.526.274
Certificates	0	1.237.762	0
Reported turnover*	565.409.302	410.978.987	704.167.491
Institutional turnover**	2.422.300.562	3.010.607.929	2.760.776.470
Total	3.431.904.990	3.991.055.344	4.688.965.508
Regular volume:			
Equities	604.306	1.447.406	2.344.618
Bonds	35.841.245	10.332.005	21.020.355
Certificates	0	1.621.523	0
Reported volume*	303.000.000	141.025.000	241.850.000
Institutional volume**	1.290.922.533	1.415.444.000	983.462.800
Total	1.630.368.084	1.569.869.934	1.248.677.773
CROBEX[©]	2.090,90	2.147,86	2.433,01
CROBIS[©]	105,5087	105,6728	103,8730
Total number of trades	7.527	11.584	16.014
Number of securities traded	105	100	103
Market Capitalization			
Equities	85.508,8	87.897,5	101.135,7
Bonds	34.398,0	37.039,8	36.536,6
Total	119.906,9	124.937,3	137.672,3
Number of trading days	21	20	23
Daily average:			
Turnover	163.424.047,16	199.552.767,21	203.868.065,58
Volume	77.636.575	78.493.497	54.290.338
Number of trades	358	579	696

*Reported trades are trades with bonds greater than 3,000,000 HRK in accordance with the Zagreb Stock Exchange Rules.

**Institutional trades are trades reported to the Exchange by institutional investors in accordance with Securities Law.

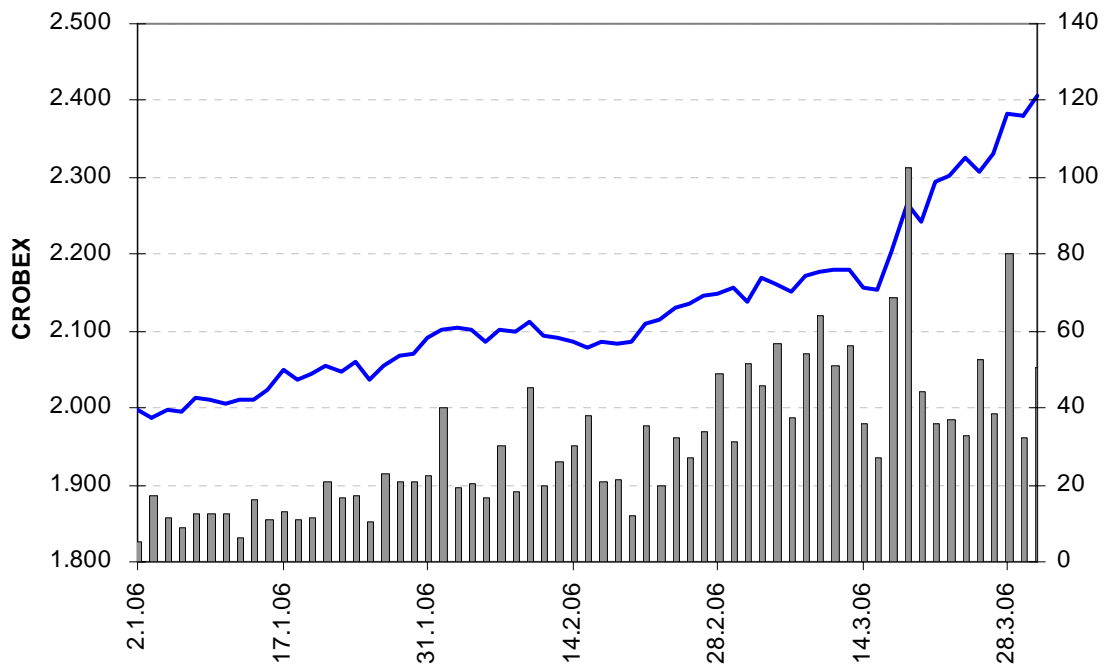


Chart 1: Zagreb Stock Exchange equity index CROBEX[®] and equity turnover

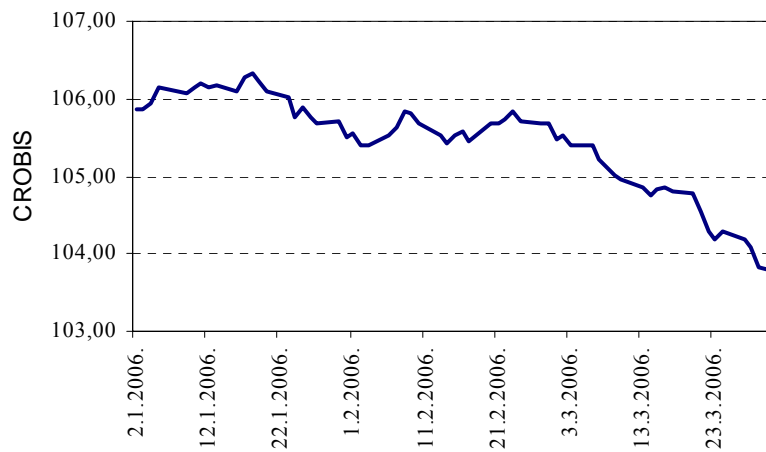


Chart 2: Zagreb Stock Exchange bond index CROBIS[®]

1.3. Shares performance

(All prices and turnover in Kunas, market capitalization in millions of Kunas)

	High	Low	Last	Average	Date	Net Change	Volume	Turnover	Mkt Cap
Official Market									
CROS-P-A	6.100,00	5.200,02	6.013,60	5.631,49	31.3.2006	5,5	1.320	7.433.564	52,6
CROS-R-A	6.350,00	5.352,00	6.200,00	5.953,36	31.3.2006	9,5	2.273	13.531.986	1.907,1
ISTT-R-A	280,00	197,20	280,00	227,43	31.3.2006	38,3	79.517	18.084.572	1.309,0
MDKA-R-A	10.300,00	8.100,01	10.298,00	8.935,79	31.3.2006	21,9	3.639	32.517.335	310,9
PLVA-R-A	589,00	406,02	578,01	479,84	31.3.2006	39,3	1.282.845	615.561.411	10.746,7
PODR-R-A	360,00	315,01	347,00	341,06	31.3.2006	9,1	335.148	114.306.176	1.880,7
JDD Market									
ADPL-R-A	110,00	106,00	110,00	109,59	28.3.2006	0,0	1.992	218.312	323,4
ADRS-P-A	3.588,00	3.106,10	3.320,00	3.336,95	31.3.2006	2,3	72.792	242.902.992	2.252,3
AMDN-R-A	250,00	230,00	250,00	243,49	7.2.2006	25,0	307	74.750	191,3
ARNT-R-A	302,00	251,06	293,00	280,59	31.3.2006	4,6	91.676	25.723.267	639,5
ATLS-R-A	117,00	80,00	116,99	94,71	31.3.2006	37,6	289.232	27.393.004	222,8
ATPL-R-A	849,50	755,00	836,99	810,96	31.3.2006	-0,9	129.041	104.646.622	1.140,2
AUHR-R-A	30.800,00	12.501,00	30.800,00	22.635,24	31.3.2006	105,3	1.433	32.436.304	550,9
BD62-R-A	480,00	302,91	425,00	371,11	31.3.2006	32,8	33.559	12.454.158	319,6
BDMR-R-A	2.000,00	1.599,00	2.000,00	1.768,31	28.3.2006	21,2	1.877	3.319.122	198,7
BLSC-R-A	603,00	425,01	603,00	504,51	31.3.2006	37,0	40.206	20.284.463	702,1
CEBA-P-A	700,00	410,00	664,01	509,05	31.3.2006	32,8	33.259	16.930.431	41,5
CEBA-R-A	1.100,00	550,00	962,00	800,80	31.3.2006	64,4	17.126	13.714.553	273,4
CRBT-R-A	235,00	225,01	225,01	234,52	28.3.2006	25,0	84	19.700	40,5
DLKV-R-A	548,99	397,00	543,00	474,41	31.3.2006	33,7	126.995	60.247.938	1.245,5
ELKA-R-A	130,00	106,02	124,00	119,88	31.3.2006	3,3	45.683	5.476.405	190,5
ELKP-R-A	550,00	550,00	550,00	550,00	31.1.2006	0,0	1	550	49,4
ELPR-R-A	340,00	260,00	319,99	305,49	31.3.2006	19,4	103.687	31.674.944	107,2
ERNT-R-A	2.185,00	1.950,00	2.140,00	2.055,12	10.3.2006	11,8	1.464	3.008.700	2.849,7
EXCL-R-A	250,00	115,00	250,00	192,66	31.3.2006	92,3	1.382	266.259	118,7
FNVC-R-A	550,00	439,99	500,00	485,67	31.3.2006	13,9	22.374	10.866.426	308,9
FRNK-R-A	2.140,00	1.814,11	2.100,00	1.971,91	30.3.2006	11,8	7.048	13.898.038	897,1
HDEL-R-A	150,00	120,01	150,00	148,62	22.3.2006	183,0	195	28.980	93,6
HICZ-R-B	399,00	300,01	360,00	361,32	21.3.2006	-5,3	190	68.650	313,2
HMAM-R-A	258,00	180,00	258,00	189,52	31.3.2006	38,7	770	145.930	288,8
HRDH-R-A	199,98	160,62	177,61	184,14	31.3.2006	-6,5	7.109	1.309.077	149,7
HUPZ-R-A	1.775,00	1.450,00	1.700,00	1.590,46	31.3.2006	13,3	8.544	13.588.924	872,7
IGH-R-A	3.100,00	2.700,00	3.100,00	2.908,73	31.3.2006	14,8	13.248	38.534.874	491,6
ILRA-R-A	515,00	400,00	515,00	489,76	16.2.2006	28,8	868	425.110	128,4
JDBA-R-A	9.300,00	6.449,21	9.200,00	7.721,77	31.3.2006	43,8	1.793	13.845.139	334,9
JDKM-R-A	399,00	200,00	365,00	242,54	30.3.2006	82,5	7.036	1.706.521	79,3
JDPL-R-A	330,00	200,00	254,00	215,53	31.3.2006	-12,4	299.621	64.576.033	415,7
JMNC-R-A	58.000,00	28.000,00	56.160,00	47.763,60	31.3.2006	116,0	273	13.039.464	1.242,6
JNAF-R-A	2.739,99	1.840,00	2.739,99	2.048,42	31.3.2006	45,0	4.088	8.373.927	2.035,4
KABA-P-A	141,10	100,09	141,10	123,83	28.3.2006	65,8	590	73.060	1,5
KABA-R-A	270,00	155,00	270,00	209,29	31.3.2006	78,2	19.076	3.992.449	192,8
KBZ-R-A	238,00	213,02	225,00	224,11	28.3.2006	-4,3	61.818	13.853.963	297,0
KNZM-R-A	27.000,00	12.001,00	25.000,00	17.958,95	31.3.2006	100,0	940	16.881.416	3.153,2
KODT-P-A	820,00	656,04	800,00	721,57	31.3.2006	22,9	3.884	2.802.597	24,6
KODT-R-A	800,00	700,00	800,00	753,11	3.3.2006	2,6	254	191.290	58,7
KOEI-R-A	412,05	280,10	400,00	343,10	31.3.2006	39,9	123.639	42.420.487	1.006,8
KOSK-P-A	150,00	150,00	150,00	150,00	1.2.2006	0,0	68	10.200	6,1

	High	Low	Last	Average	Date	Net Change	Volume	Turnover	Mkt Cap
KRAS-R-A	620,00	560,02	610,00	594,28	31.3.2006	10,7	10.877	6.463.998	837,9
LEDO-R-A	3.100,00	3.100,00	3.100,00	3.100,00	22.2.2006	44,2	3	9.300	682,5
LKPC-R-A	1.800,00	1.000,00	1.600,00	1.489,32	31.3.2006	42,9	27.345	40.725.333	356,2
LKRI-R-A	176,00	176,00	176,00	176,00	31.1.2006	23,9	78	13.728	530,1
LLRB-R-A	300,00	162,50	285,00	243,61	31.3.2006	57,5	12.677	3.088.201	36,2
LRH-R-A	2.750,00	2.750,00	2.750,00	2.750,00	26.1.2006	0,0	1	2.750	832,3
LURA-R-A	460,00	420,00	460,00	443,00	24.3.2006	2,2	902	399.583	1.380,0
LVCV-R-A	550,00	409,00	500,00	519,02	16.3.2006	316,7	2.823	1.465.200	232,8
MAIS-R-A	170,00	158,00	160,00	166,47	8.3.2006	0,0	1.500	249.700	1.641,2
MDPL-R-A	106,00	101,00	104,00	104,96	31.3.2006	-1,0	1.818	190.809	16,2
MLNR-R-A	999,00	221,00	520,00	590,46	31.3.2006	33,3	6.375	3.764.191	101,6
MMBA-R-A	1.300,00	800,00	1.299,91	1.154,77	31.3.2006	44,6	442	510.407	415,6
PBZ-R-A	740,00	582,32	725,15	639,90	31.3.2006	24,6	47.753	30.557.098	12.081,0
PLAG-R-A	3.450,00	2.580,00	3.350,00	2.891,46	31.3.2006	27,4	5.835	16.871.657	1.830,2
POBA-R-A	400,00	187,10	220,00	238,87	20.3.2006	10,0	821	196.113	70,4
PTKM-R-A	175,00	103,01	138,00	139,29	31.3.2006	21,1	280.482	39.068.310	341,1
RIBA-R-A	525,00	352,01	525,00	402,06	31.3.2006	42,3	12.695	5.104.171	6.952,3
RIZO-R-A	350,00	151,00	151,00	302,39	31.3.2006	-51,9	1.386	419.117	20,5
SDBA-R-A	222,00	140,00	202,00	181,57	30.3.2006	42,2	7.325	1.330.032	63,9
TDZ-R-A	2.300,00	2.001,01	2.001,01	2.167,67	20.3.2006	-13,0	141	305.641	649,9
THNK-R-A	2.899,99	1.800,00	2.800,00	2.457,00	31.3.2006	55,6	9.537	23.432.430	530,5
TISK-R-A	490,00	350,00	433,00	431,79	31.3.2006	5,6	24.713	10.670.783	1.033,4
TLM-R-A	190,00	79,05	163,00	140,79	24.3.2006	106,2	105.074	14.792.875	299,9
TNPL-R-A	2.940,00	2.650,01	2.780,00	2.793,03	31.3.2006	-2,5	8.067	22.531.373	1.741,4
TOZ-R-A	180,00	117,00	170,00	144,32	31.3.2006	34,8	35.846	5.173.228	42,0
TRFM-R-A	980,00	863,00	978,00	927,80	31.3.2006	-0,2	2.745	2.546.818	35,2
ULPL-R-A	2.439,00	2.113,00	2.439,00	2.319,93	31.3.2006	3,6	2.793	6.479.560	457,3
ULJN-R-A	170,00	131,71	146,23	151,86	31.3.2006	11,2	6.141	932.552	327,0
VJSN-R-A	80,00	70,04	80,00	75,02	10.1.2006	14,2	120	9.002	84,9
ZABA-P-B	4.710,00	3.600,00	4.710,00	3.983,32	30.3.2006	27,3	175	697.081	53,3
ZABA-R-A	6.101,00	4.100,00	6.101,00	5.016,44	31.3.2006	50,6	5.799	29.090.320	17.531,9
ZAPI-R-A	3.700,00	3.250,00	3.700,00	3.514,53	31.3.2006	6,0	2.310	8.118.563	2.295,7
ZLJS-R-A	500,00	375,00	500,00	457,39	15.3.2006	35,1	44	20.125	56,6
Parallel Market									
BRNK-R-A	300,00	220,00	300,00	224,65	27.3.2006	36,4	5.129	1.152.250	39,7
CHAG-R-A	1.479,00	1.479,00	1.479,00	1.479,00	1.2.2006	6,4	20	29.580	186,3
HRBC-R-A	303,00	279,00	303,00	289,76	16.3.2006	8,2	3.357	972.739	306,7
INFS-R-A	305,00	305,00	305,00	305,00	9.2.2006	0,0	79	24.095	16,3
IPKT-R-A	120,00	76,00	118,00	101,67	24.2.2006	84,4	450	45.750	66,6
KAPI-R-A	1.810,00	1.804,59	1.804,59	1.805,40	13.1.2006	0,0	250	451.351	922,6
KMKA-R-A	450,00	150,00	400,00	330,54	24.3.2006	27,0	167	55.200	38,1
KODS-R-A	27,00	15,01	27,00	21,73	23.3.2006	16,4	1.389	30.187	2,9
KORF-R-A	135,00	128,00	133,00	132,85	21.3.2006	-1,5	1.479	196.486	1.079,1
MLDN-R-A	300,00	192,00	300,00	273,88	31.3.2006	39,5	2.938	804.660	28,8
PUNT-R-A	39,99	33,53	38,00	37,28	31.3.2006	0,0	60.729	2.264.121	10,1
RIVP-R-A	418,00	318,00	418,00	356,10	31.3.2006	22,9	29.328	10.443.837	1.527,2
SLBA-R-A	2.700,00	2.200,00	2.500,00	2.568,95	30.3.2006	10,2	1.862	4.783.377	1.449,8
SLPF-R-A	68,00	57,11	63,50	60,15	24.3.2006	5,0	163.087	9.809.166	212,5
SNHO-R-A	150,00	140,00	150,00	143,04	8.3.2006	-6,3	214	30.610	506,6
STBA-R-A	301,00	301,00	301,00	301,00	23.1.2006	0,0	2.455	738.955	1.370,4
SUNH-R-A	239,00	124,00	225,00	153,06	31.3.2006	75,1	190.973	29.230.940	1.195,0
VLHO-R-A	100,00	100,00	100,00	100,00	31.1.2006	-8,3	149	14.900	337,7
ZLAR-R-A	402,00	301,52	393,01	352,24	31.3.2006	22,8	27.668	9.745.790	217,1

1.4. Bonds performance

(All prices in % of par value, turnover in Kunas)

	High	Low	Last	Date	Volume	Turnover
Regular trades						
AGKR-O-074A	105,10	104,45	104,45	23.2.2006	51.000	389.159
ATGR-O-077A	102,30	102,30	102,30	17.2.2006	3.500	26.229
FNOI-D-067A	97,13	97,13	97,13	9.3.2006	125.195	8.908
FNOI-D-071A	92,47	92,47	92,47	9.3.2006	125.195	8.481
FNOI-D-077A	87,00	87,00	87,00	23.1.2006	125.195	8.041
FNOI-D-081A	82,82	82,82	82,82	23.1.2006	125.195	7.655
FNOI-D-087A	78,89	78,89	78,89	23.1.2006	125.195	7.292
FNOI-D-091A	75,10	75,10	75,10	23.1.2006	125.195	6.941
FNOI-D-097A	71,55	71,55	71,55	23.1.2006	125.195	6.613
PLVA-O-115A	107,30	106,00	106,00	29.3.2006	1.021.000	8.040.313
PODR-O-072A	100,15	100,15	100,15	20.3.2006	50.000	367.121
RBA-O-112A	101,80	100,00	101,75	16.3.2006	1.172.000	1.180.455
RHMF-O-077A	100,50	99,50	99,90	29.3.2006	1.109.202	8.092.808
RHMF-O-085A	106,10	105,20	106,10	31.3.2006	3.590.153	3.789.593
RHMF-O-08CA	109,40	106,45	106,45	30.3.2006	1.932.000	15.287.373
RHMF-O-103A	111,40	109,80	109,80	30.3.2006	5.550.477	6.163.602
RHMF-O-125A	118,40	113,95	113,95	28.3.2006	1.799.500	15.255.184
RHMF-O-142A	112,50	108,00	108,00	28.3.2006	8.306.750	68.473.642
RHMF-O-157A	103,85	100,00	100,00	28.3.2006	7.232.800	55.006.023
RHMF-O-15CA	111,15	108,50	110,20	28.3.2006	33.468.858	36.940.081
RHMF-O-19BA	117,15	112,10	112,10	28.3.2006	1.030.000	8.467.707
TOTAL					67.193.605	227.533.220
Reported trades*						
AGKR-O-074A	105,14	105,14	105,14	23.2.2006	1.000.000	7.680.034
RBA-O-112A	100,00	100,00	100,00	13.2.2006	4.000.000	4.000.000
RHMF-O-077A	100,60	99,40	99,85	30.3.2006	10.950.000	80.657.209
RHMF-O-085A	105,55	105,55	105,55	27.2.2006	10.000.000	10.555.000
RHMF-O-08CA	109,35	106,75	106,90	27.3.2006	13.000.000	103.242.391
RHMF-O-103A	111,70	110,00	110,00	31.3.2006	80.000.000	88.863.500
RHMF-O-125A	118,25	113,50	114,00	31.3.2006	37.850.000	321.258.701
RHMF-O-142A	112,45	107,70	107,75	30.3.2006	28.575.000	231.290.602
RHMF-O-157A	104,20	99,75	100,00	30.3.2006	28.500.000	213.161.311
RHMF-O-15CA	111,10	106,70	109,90	30.3.2006	458.000.000	501.562.550
RHMF-O-19BA	116,60	111,70	111,70	30.3.2006	14.000.000	118.284.482
TOTAL					685.875.000	1.680.555.780
Institutional trades**						
AGKR-O-074A	105,50	105,20	105,50	12.1.2006	2.700.000	20.978.548
ATGR-O-077A	102,80	102,00	102,00	31.3.2006	1.756.000	13.189.030
GDZD-O-119A	107,95	107,95	107,95	17.1.2006	1.000.000	7.956.959
HYBA-O-086A	105,60	105,60	105,60	9.1.2006	5.975.000	6.309.600
MDKA-O-087A	102,00	100,56	101,20	22.3.2006	805.000	5.965.171
PLVA-O-115A	107,30	106,20	106,20	24.3.2006	14.609.600	114.633.678
PODR-O-072A	101,20	100,90	100,90	22.3.2006	1.207.700	8.962.979
RBA-O-112A	101,90	100,03	100,60	30.3.2006	189.330.000	191.058.410
RHMF-O-077A	100,75	99,35	99,60	31.3.2006	91.984.000	674.558.297
RHMF-O-085A	106,95	104,60	106,95	31.3.2006	154.248.933	162.391.500
RHMF-O-08CA	109,70	106,70	106,75	31.3.2006	20.803.000	164.884.739

	High	Low	Last	Date	Volume	Turnover
RHMF-O-103A	111,90	109,80	110,50	31.3.2006	501.080.000	557.656.870
RHMF-O-125A	118,70	113,50	113,90	31.3.2006	109.975.000	937.418.839
RHMF-O-142A	112,80	107,60	107,75	31.3.2006	182.098.400	1.477.990.059
RHMF-O-157A	104,25	99,55	100,00	31.3.2006	120.822.700	908.560.448
RHMF-O-15CA	111,30	107,00	109,80	31.3.2006	2.230.650.000	2.452.900.063
RHMF-O-19BA	117,35	111,45	111,60	31.3.2006	57.384.000	484.979.671
TOTAL					3.686.429.333	8.190.394.861
BONDS TOTAL					4.439.497.938	10.098.483.86

*Reported trades are trades with bonds greater then 3,000,000 HRK in accordance with the Zagreb Stock Exchange Rules.

**Institutional trades are trades reported to the Exchange by institutional investors in accordance with Securities Law.

1.5. Certificates performance

(All prices in % of par value, turnover in Kunas)

Symbol	High	Low	Last	Date	Volume	Turnover
RHMF-A-A	78,00	76,00	78,00	20.2.2006	1.567.535	1.197.271
RHMJ-A-A	75,00	75,00	75,00	16.2.2006	53.988	40.491

1.6. Commercial papers performance

(All prices in % of par value, turnover in Kunas)

Symbol	High	Low	Last	Date	Volume	Turnover
Institutional turnover						
INGR-M-647A	96,83	96,83	96,83	1.3.2006	3.000.000	2.904.900
MGMA-M-707A	96,30	96,30	96,30	6.3.2006	400.000	385.200
TOTAL					3.400.000	3.290.100

1.7. Stocks with the largest Market Capitalization

(Market capitalization in millions of Kunas)

	Symbol	Market Cap. 31.3.2006.	Percentage (%)	Cumulative percentage (%)
1	ZABA-R-A	17.531,9	17,3	17,3
2	PBZ-R-A	12.081,0	11,9	29,3
3	PLVA-R-A	10.746,7	10,6	39,9
4	RIBA-R-A	6.952,3	6,9	46,7
5	KNZM-R-A	3.153,2	3,1	49,9
6	ERNT-R-A	2.849,7	2,8	52,7
7	ZAPI-R-A	2.295,7	2,3	54,9
8	ADRS-P-A	2.252,3	2,2	57,2
9	JNAF-R-A	2.035,4	2,0	59,2
10	CROS-R-A	1.907,1	1,9	61,1
	Others	39.330,4	38,9	100,0
	Total	101.135,7		

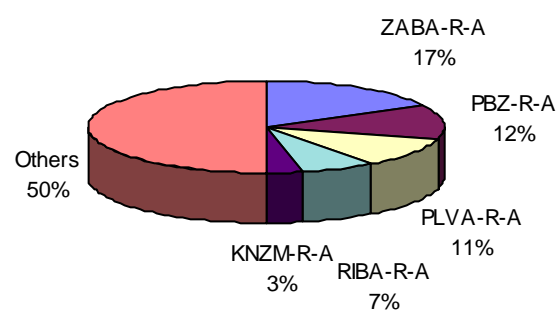


Chart 3: Market Capitalization

1.8. Most active stocks by turnover

(Turnover in Kunas)

	Symbol	Turnover	Percentage (%)	Cumulative percentage (%)
1	PLVA-R-A	615.561.411	30,6	30,6
2	ADRS-P-A	242.902.992	12,1	42,7
3	PODR-R-A	114.306.176	5,7	48,4
4	ATPL-R-A	104.646.622	5,2	53,6
5	JDPL-R-A	64.576.033	3,2	56,8
6	DLKV-R-A	60.247.938	3,0	59,8
7	KOEI-R-A	42.420.487	2,1	62,0
8	LKPC-R-A	40.725.333	2,0	64,0
9	PTKM-R-A	39.068.310	1,9	65,9
10	IGH-R-A	38.534.874	1,9	67,8
	Others	645.923.942	32,2	100,0
	Total	2.008.914.119		

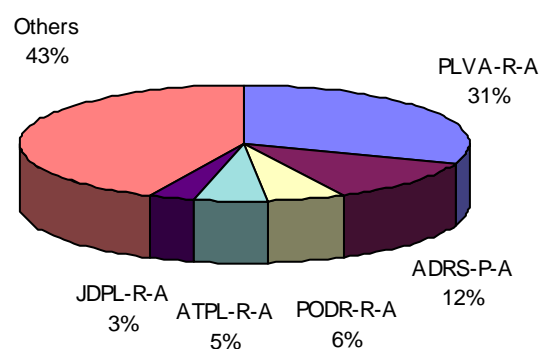


Chart 4: Distribution of equity turnover

1.9. Best performing stocks

Symbol	Fourth quarter of 2005	First quarter of 2006	% change
LVCV-R-A	120,00	500,00	316,7
HDEL-R-A	53,01	150,00	183,0,
JMNC-R-A	26.000,00	56.160,00	116,0
TLM-R-A	79,05	163,00	106,2
AUHR-R-A	15.000,00	30.800,00	105,3
KNZM-R-A	12.500,00	25.000,00	100,0
EXCL-R-A	130,00	250,00	92,3
IPKT-R-A	64,00	118,00	84,4
JDKM-R-A	200,00	365,00	82,5
KABA-R-A	151,50	270,00	78,2

1.10. Underperforming stocks

Symbol	Fourth quarter of 2005	First quarter of 2006	% change
RIZO-R-A	314,00	151,00	-51,9
TDZ-R-A	2.300,00	2.001,01	-13,0
JDPL-R-A	290,00	254,00	-12,4
VLHO-R-A	109,00	100,00	-8,3
HRDH-R-A	190,01	177,61	-6,5
SNHO-R-A	160,00	150,00	-6,3
HICZ-R-B	380,00	360,00	-5,3
KBZ-R-A	235,00	225,00	-4,3
TNPL-R-A	2.849,91	2.780,00	-2,5
KORF-R-A	135,00	133,00	-1,5
MDPL-R-A	105,00	104,00	-1,0

1.11. Financial ratios

(Price, earnings and dividends in Kunas)

Symbol	Price 31.3.2006	Earnings per share	P/E ratio	Dividend for 2004	Dividend yield
CROS-P-A	6.013,60	-	-	119	2,0%
CROS-R-A	6.200,00	325,45	19,1	119	1,9%
ISTT-R-A	280,00	17,16	16,3	5,3	1,9%
MDKA-R-A	10.298,00	106,48	96,7	0	0,0%
PLVA-R-A	578,01	44,68	12,9	12,00	2,1%
PODR-R-A	347,00	17,84	19,5	5	1,4%

1.12. Top 10 Members by Equity Turnover

Rang	Member
1	Auctor d.o.o.
2	Erste vrijednosni papiri d.o.o.
3	Fima vrijednosnice d.o.o.
4	Interkapital vrijednosni papiri d.o.o.
5	Zagrebačka banka d.d.
6	Privredna banka Zagreb d.d.
7	Hypo Alpe-Adria-Bank d.d.
8	Raiffeisenbank Austria d.d.
9	InterFinance d.o.o.
10	HITA vrijednosnice d.d.

1.13. Top 10 Members by Bonds Turnover

Rang	Member
1	Interkapital vrijednosni papiri d.o.o.
2	Raiffeisenbank Austria d.d.
3	I.C.F. d.o.o.
4	InterFinance d.o.o.
5	Erste vrijednosni papiri d.o.o.
6	Auctor d.o.o.
7	TO ONE brokeri d.o.o.
8	Privredna banka Zagreb d.d.
9	Zagrebačka banka d.d.
10	HVB Splitska banka d.d.

1.14. Top 10 Members by Total Turnover

Rang	Member
1	Interkapital vrijednosni papiri d.o.o.
2	Auctor d.o.o.
3	Raiffeisenbank Austria d.d.
4	Erste vrijednosni papiri d.o.o.
5	I.C.F. d.o.o.
6	Fima vrijednosnice d.o.o.
7	InterFinance d.o.o.
8	Zagrebačka banka d.d.
9	Privredna banka Zagreb d.d.
10	Hypo Alpe-Adria-Bank d.d.

2. Prices and volumes for the most active stocks

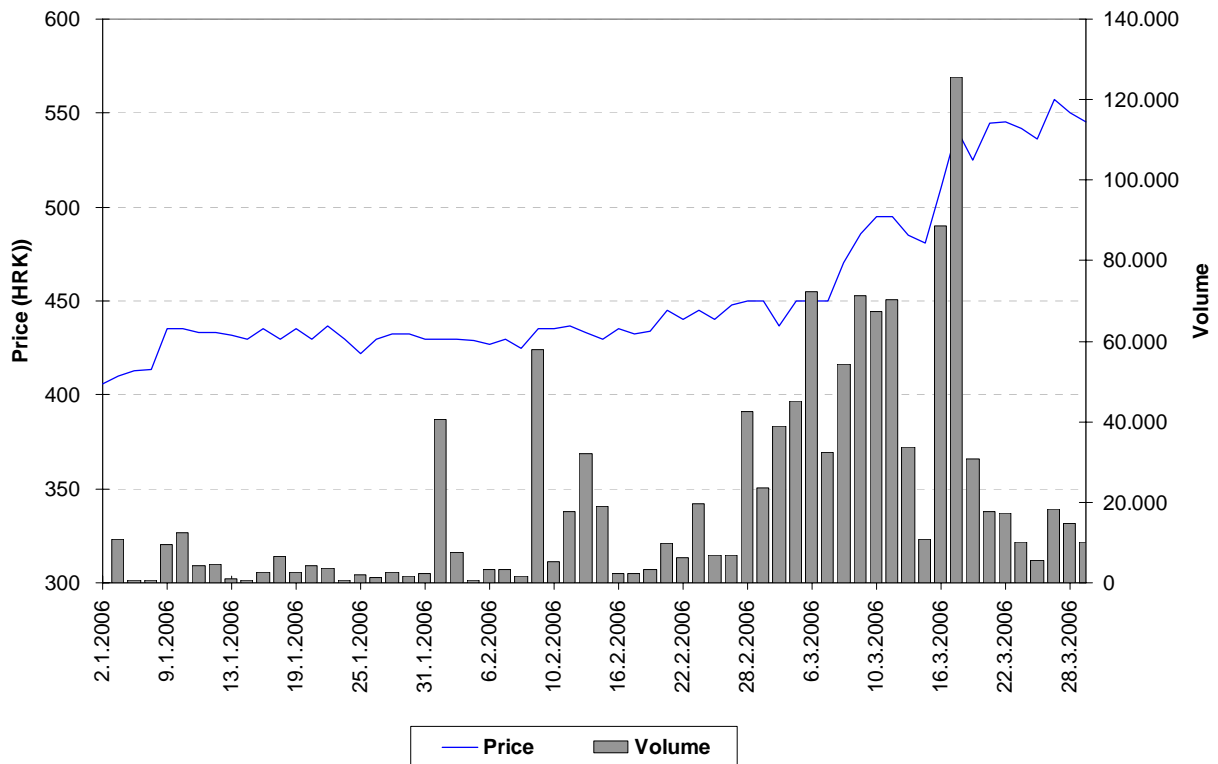


Chart 5: Pliva d.d.

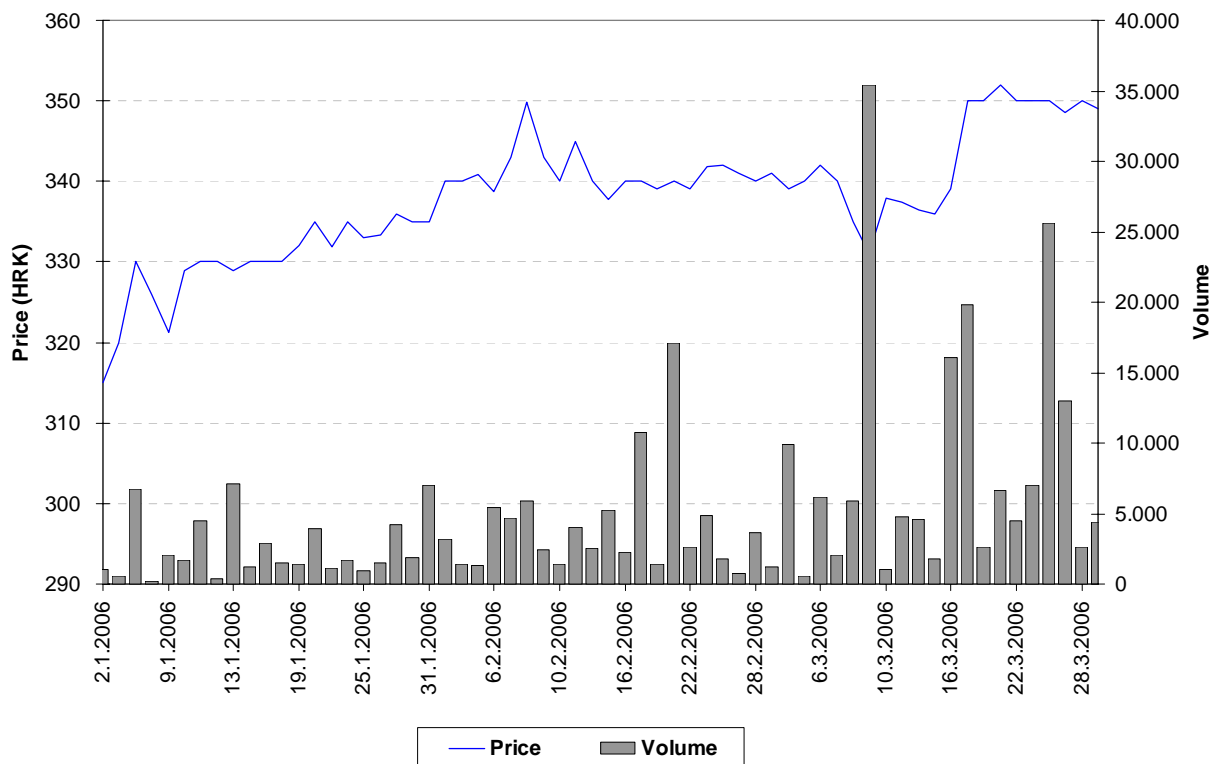


Chart 6: Podravka d.d.

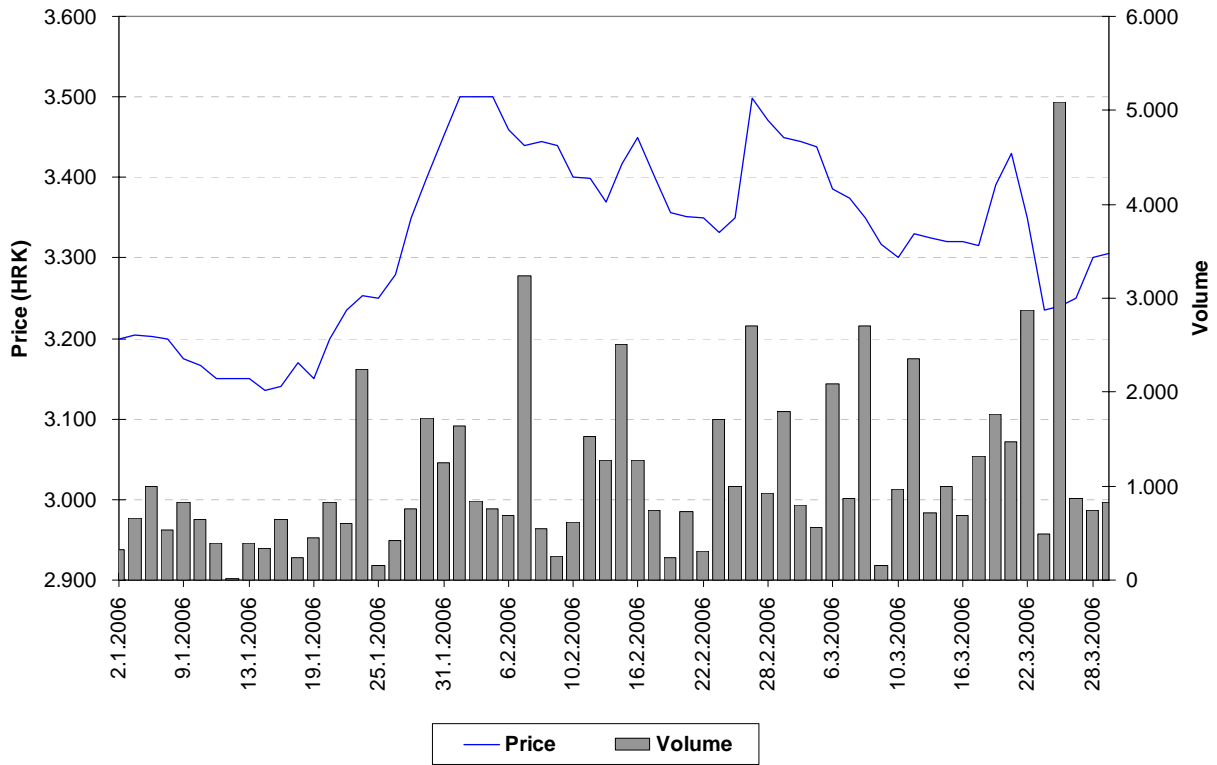


Chart 7: ADRIS GRUPA d.d., preferred stocks

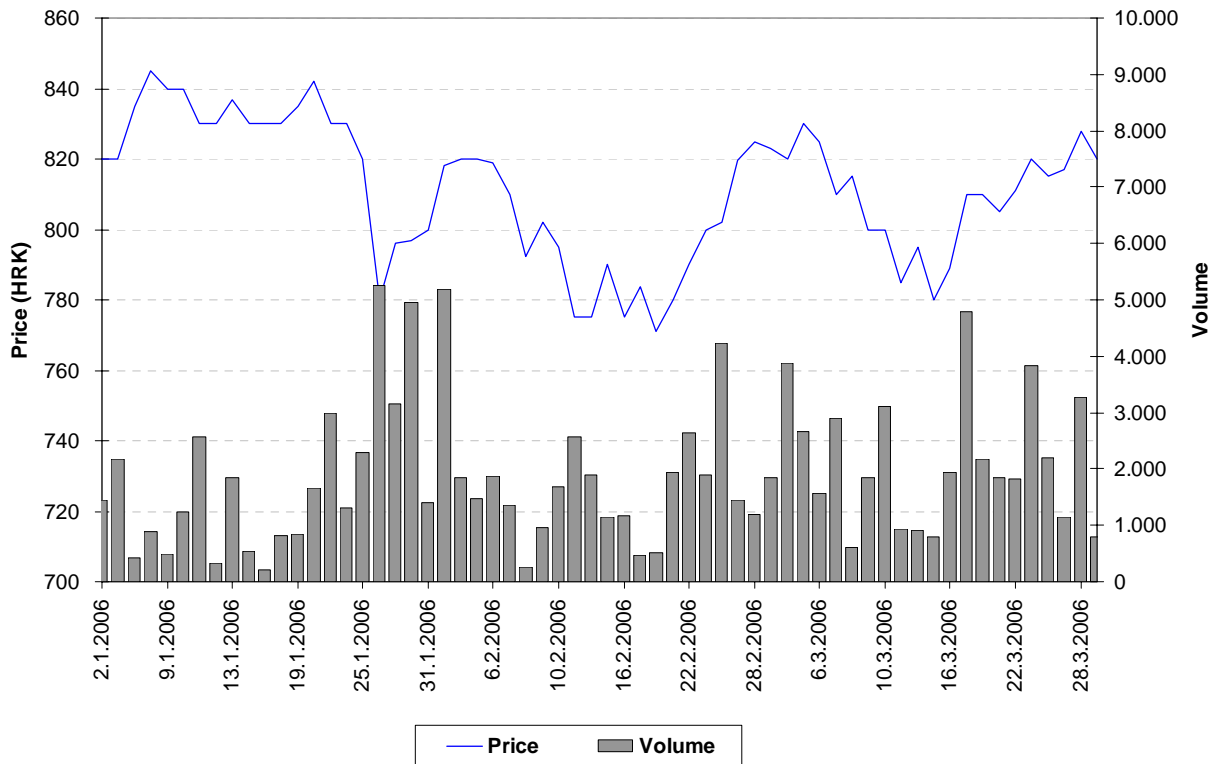


Chart 8: Atlantska plovidba d.d.

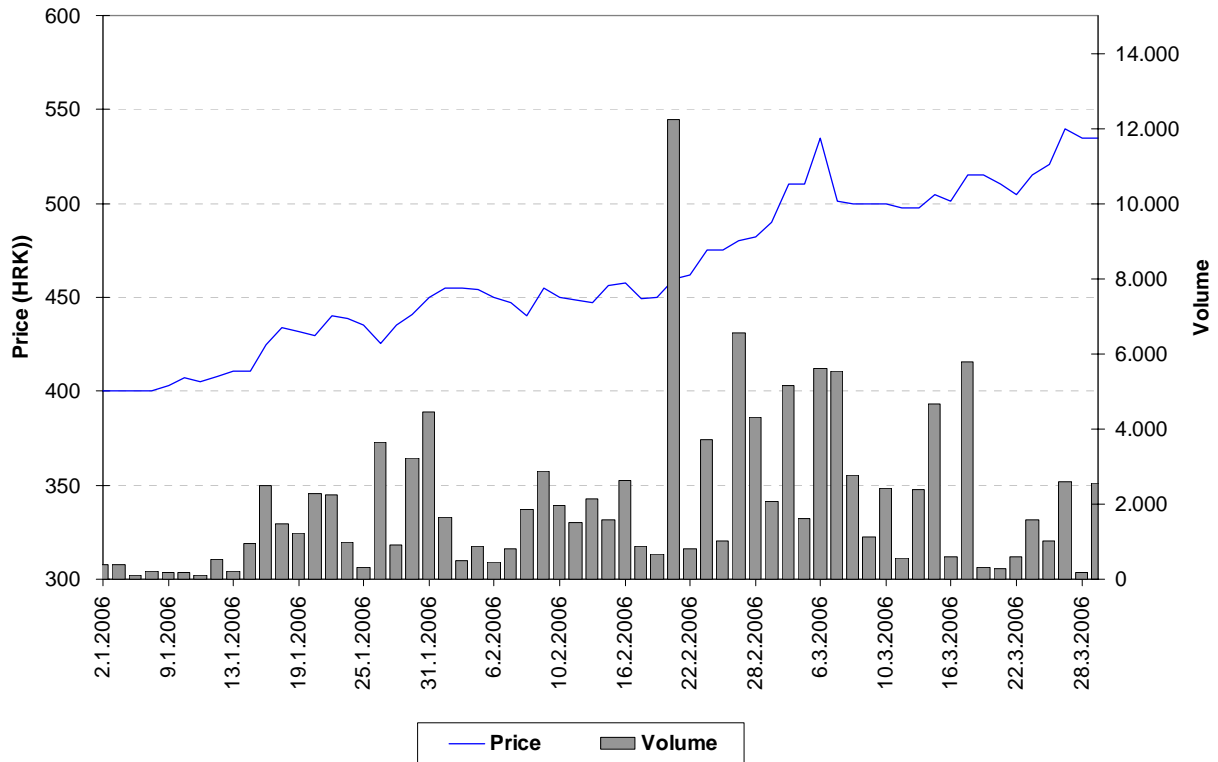


Chart 9: Dalekovod d.d.

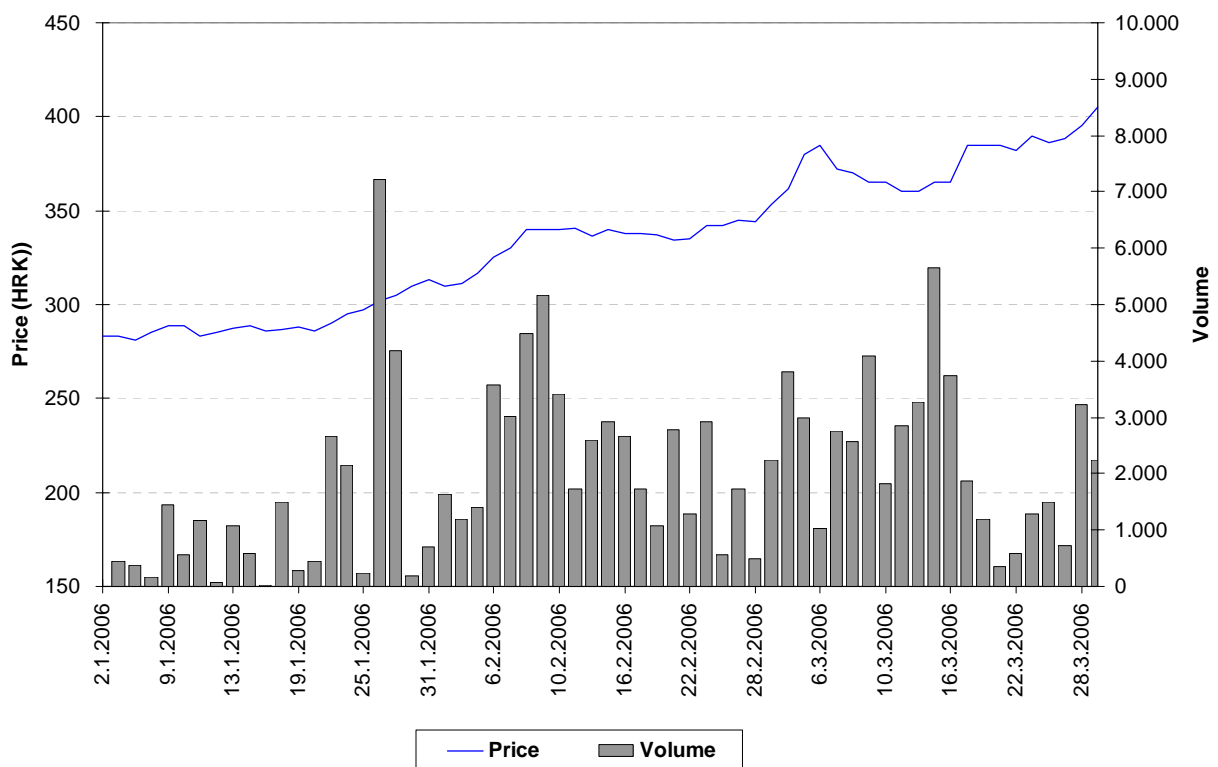


Chart 10: Končar Elektroindustrija d.d.

3. Listed shares

Symbol	Company name	Shares outstanding	Nominal value
Official Market			
Common stocks			
CROS-R-A	Croatia osiguranje d.d.	307.598	1400 HRK
ISTT-R-A	Istraturist Umag d.d.	4.674.995	100 HRK
MDKA-R-A	Medika d.d.	30.194	2.000 HRK
PLVA-R-A	PLIVA d.d.	18.592.648	100 HRK
PODR-R-A	Podravka prehrambena industrija d.d.	5.420.003	300 HRK
Preferred stocks			
CROS-P-A	Croatia osiguranje d.d.	8.750	1400 HRK
JDD Market			
Common stocks			
ADCH-R-A	Adriachem d.d.	623.578	300 HRK
ADPL-R-A	AD Plastik d.d.	2.939.709	100 HRK
ADRS-R-A	ADRIS GRUPA d.d.	961.590	100 HRK
AMDN-R-A	Apartmani Medena d.d.	765.376	300 HRK
ARNT-R-A	Arenaturist d.d.	2.182.500	300 HRK
ATLS-R-A	Atlas turistička agencija d.d.	1.904.315	50 HRK
ATPL-R-A	Atlantska plovidba d.d.	1.362.260	300 HRK
AUHR-R-A	Auto-Hrvatska d.d.	17.885	3700 HRK
BD62-R-A	Badel 1862 d.d.	752.106	300 HRK
BDMR-R-A	Brodamerkur d.d.	99.331	1900 HRK
BLSC-R-A	Belišće d.d.	1.164.312	300 HRK
CEBA-R-A	Centar banka d.d.	284.249	400 HRK
CHBL-R-A	Chromos boje i lakovi d.d.	287.740	300 HRK
CRAL-R-A	Croatia Airlines d.d.	4.349.279	200 HRK
CRBT-R-A	Croatia Baterija d.d.	180.090	300 HRK
DALS-R-A	Dalma d.d.	1.225.790	100 DEM
DKVS-R-A	Đakovština d.d.	793.021	300 HRK
DLKV-R-A	Dalekovod	2.293.812	100 HRK
DLMC-R-A	Dalmacijacement d.d.	1.700.000	700 HRK
DMUS-R-A	Domus d.d.	428.6762	100 HRK
DRNJ-R-A	Drvenjača d.d.	223.990	300 HRK
DTR-R-A	Domaća tvornica rublja d.d.	107.850	100 DEM
ELKA-R-A	EIG d.d.	1.588.320	300 HRK
ELKP-R-A	Elektroprojekt d.d.	89.800	100 DEM
ELPR-R-A	Elektropromet d.d.	334.860	300 HRK
ERNT-R-A	Ericsson Nikola Tesla d.d.	1.331.650	100 HRK
EXCL-R-A	Excelsior d.d.	474.947	100 HRK
EXPD-R-A	Exportdrvo d.d.	159.064	400 HRK
FNVC-R-A	Finvest Corp d.d.	617.751	400 HRK
FRNK-R-A	Franck d.d.	427.170	600 HRK
GPDU-R-A	GP Dubrovnik d.d.	128.835	300 HRK
HBEL-R-A	Hotel Bellevue d.d.	43.834	300 HRK
HCRC-R-A	Hoteli Croatia d.d.	1.079.040	100 HRK

Symbol	Company name	Shares outstanding	Nominal value
HDEL-R-A	Hidroelektra niskogradnja d.d.	623.881	100 HRK
HDUZ-R-A	Hotel Dubrovnik d.d.	267.200	100 DEM
HICZ-R-B	Hotel Opera d.d.	869.876	200 HRK
HMAM-R-A	Hoteli Makarska d.d.	1.119.470	200 HRK
HMST-R-A	Hoteli Maestral d.d.	515.720	200 HRK
HPDG-R-A	Hoteli Podgora d.d.	366.250	100 DEM
HRDH-R-A	Hrvatski Duhani d.d.	842.807	300 HRK
HTCP-R-A	Hoteli Tučepi d.d.	548.200	300 HRK
HUPZ-R-A	HUP Zagreb d.d.	513.333	400 HRK
IGH-R-A	Institut građevinarstva Hrvatske d.d.	158.580	400 HRK
IKBA-R-A	Istarska kreditna banka d.d.	57.487	1100 HRK
ILRA-R-A	Ilirija d.d.	249.386	390 HRK
INDG-R-A	Industrogradnja d.d.	125.072	2700 HRK
INGR-R-A	Ingra d.d.	40.000	1500 HRK
INKR-R-A	Lasselsberger industrija keramike i porucalana d.d.	1.451.886	100 HRK
JDBA-R-A	Jadranska banka d.d.	36.400	2000 HRK
JDKM-R-A	Jadrnkamen d.d.	217.330	100 DEM
JDPL-R-A	Jadroplov d.d.	1.636.674	360 HRK
JMNC-R-A	Jamnica d.d.	22.126	3800 HRK
JNAF-R-A	Jadranski naftovod d.d.	742.846	2700 HRK
KABA-R-A	Karlovačka banka d.d.	713.996	100 HRK
KBZ-R-A	Kreditna banka Zagreb d.d.	1.319.945	100 HRK
KNZM-R-A	Konzum d.d.	126.127	1800 HRK
KODT-R-A	Končar-distributivni i specijalni transformatori d.d.	73.313	300 HRK
KOEI-R-A	Končar elektroindustrija d.d.	2.517.053	400 HRK
KOSK-R-A	Končar Sklopna postrojenja d.d.	68.842	300 HRK
KRAS-R-A	Kraš d.d.	1.373.621	400 HRK
KSST-R-A	Kaštelanski staklenici d.d.	113.593	2500 HRK
KTKS-R-A	Koteks d.d.	669.467	100 HRK
LANO-R-A	Laguna Novigrad d.d.	322.790	370 HRK
LEDO-R-A	Ledo d.d.	220.170	380 HRK
LKPC-R-A	Luka Ploče d.d.	222.614	400 HRK
LKRI-R-A	Luka Rijeka d.d.	3.011.830	100 HRK
LLRB-R-A	Lola Ribar d.d.	127.139	400 HRK
LPML-R-A	Lipa Mill d.d.	70.833	720 HRK
LRH-R-A	Liburnia Riviera hoteli d.d.	302.641	3200 HRK
LURA-R-A	Lura d.d.	3.000.000	100 HRK
LVCV-R-A	Lavčević d.d.	465.656	300 HRK
MAGE-R-A	Marin Getaldić d.d.	180.608	50 DEM
MAIS-R-A	MAISTRA d.d.	10.257.393	-
MDPL-R-A	Mediteranska plovidba d.d.	156.126	370 HRK
MLNR-R-A	Mlinar d.d.	195.409	400 HRK
MMBA-R-A	Međimurska banka d.d.	319.750	400 HRK
MSLK-R-A	Moslavka d.d.	191.732	200 HRK
NVBA-R-A	Nava banka d.d.	101.610	400 HRK
PABA-R-A	Partner banka d.d.	891.000	100 HRK
PBZ-R-A	Privredna banka Zagreb d.d.	16.660.000	100 HRK
PLAG-R-A	Plava Laguna d.d.	546.318	1800 HRK
PLTO-R-A	PLUTO d.d.	87.440	400 HRK
POBA-R-A	Požeška banka d.d.	320.000	200 HRK

Symbol	Company name	Shares outstanding	Nominal value
PRHN-R-A	Prehrana d.d.	129.950	300 HRK
PTKM-R-A	Petrokemija d.d.	2.471.721	400 HRK
RIBA-R-A	Erste & Steiermarkische bank d.d.	13.242.478	100 HRK
RIZO-R-A	RIZ-ODAŠILJAČI d.d.	135.902	100 DEM
SDBA-R-A	BANKA SPLITSKO-DALMATINSKA d.d.	316.178	100 HRK
SLDM-R-A	Slobodna dalmacija d.d.	1.542.666	100 HRK
SLRS-R-A	Solaris d.d.	726.990	100 DEM
SSNC-R-A	Banka Sonic d.d.	61.800	500 HRK
TANG-R-A	TANG tvornica alata d.d.	145.000	500 HRK
TDZ-R-A	Tvornica duhana Zagreb d.d.	324.808	700 HRK
TEP-R-A	TEP Tvornica elektrotehničkih proizvoda d.d.	377.847	200 HRK
THNK-R-A	Tehnika d.d.	189.460	900 HRK
TISK-R-A	Tisak d.d.	2.386.587	100 HRK
TLM-R-A	TLM Tvornica lakih metala d.d.	1.840.082	300 HRK
TMPO-R-A	TEMPO d.d.	607.952	100 HRK
TNPL-R-A	Tankerska plovidba d.d.	626.385	600 HRK
TOZ-R-A	TOZ Penkala, Tvornica olovaka Zagreb d.d.	246.930	300 HRK
TRFM-R-a	TERRA FIRMA d.d.	36.000	1000 HRK
TSTR-R-A	Tekstilstroj d.d.	114.442	300 HRK
ULPL-R-A	Uljanik plovidba d.d.	187.500	400 HRK
ULJN-R-A	ULJANIK d.d.	2.236.253	300 HRK
UNPP-R-A	Unijapapir d.d.	19.210	1800 HRK
VDKT-R-A	Viadukt d.d.	345.820	300 HRK
VJSN-R-A	Vjesnik d.d.	1.061.683	100 HRK
VPIK-R-A	VUPIK d.d.	1.405.173	400 HRK
ZABA-R-A	Zagrebačka banka d.d.	2.873.603	380 HRK
ZAPI-R-A	Zagrebačka pivovara d.d.	620.450	100 DEM
ZLJS-R-A	Željezara Split d.d.	113.216	1200 HRK
ZPKL-R-A	Zagrebačke pekarnice Klara d.d.	283.760	400 HRK
	JDD Market		
	Preferred stocks		
ADRS-P-A	ADRIS GRUPA d.d.	678.410	100 HRK
CEBA-P-A	Centar banka d.d.	62.500	400 HRK
CRAL-P-A	Croatia Airlines d.d.	17.590	100 HRK
CRAL-P-A1	Croatia Airlines d.d.	6.762	100 HRK
CRAL-P-A2	Croatia Airlines d.d.	13.025	100 HRK
CRAL-P-A3	Croatia Airlines d.d.	7.356	100 HRK
CRAL-P-A4	Croatia Airlines d.d.	6.464	100 HRK
HCRC-P-A	Hoteli Croatia d.d.	402.500	100 HRK
IKBA-P-A	Istarska kreditna banka d.d.	1.513	1100 HRK
KABA-P-A	Karlovačka banka d.d.	10.824	100 HRK
KODT-P-A	Končar-Distributivni i specijalni transformatori d	30.714	300 HRK
KOSK-P-A	Končar Sklopna postrojenja d.d.	40.718	300 HRK
PLAG-P-A	Plava Laguna d.d.	105.000	1000 HRK
SDBA-P-A	BANKA SPLITSKO-DALMATINSKA d.d.	86.680	100 HRK
SSNC-P-A1	Banka Sonic d.d.	18.200	500 HRK
ZABA-P-B	Zagrebačka banka d.d.	11.325	540 HRK
	Parallel Market		
	Common stocks		
ADHT-R-A	Adriatic d.d.	337.480	200 HRK

Symbol	Company name	Shares outstanding	Nominal value
AGLG-R-A	AGROLAGUNA d.d.	28.487	2500 HRK
BLVD-R-A	Belvedere d.d.	349.080	300 HRK
BRNK-R-A	Brionka d.d.	132.410	100 DEM
CHAG-R-A	CHROMOS AGRO d.d.	125.977	500 HRK
CRLI-R-A	Croatia Lloyd d.d.	145.076	800 HRK
DKST-R-A	DK «STOLARIJA» d.d.	5.484	500 DEM
FRMC-R-A	Farmacija d.d.	16.835	1200 HRK
GHAD-R-A	Grand Hotel Adriatic d.d.	170.800	100 DEM
GHPA-R-A	Grand Hotel Park d.d.	139.895	400 HRK
GKBA-R-A	Gospodarsko-kreditna banka d.d.	627.720	100 HRK
HARG-R-A	Hoteli Argentina d.d.	185.960	300 HRK
HBRL-R-A	Hoteli Brela d.d.	525.270	100 DEM
HIMR-R-A	Imperial d.d.	635.855	200 DEM
HMLN-R-A	Hoteli Mlini d.d.	780.364	100 HRK
HMLN-R-A	Hoteli Mlini d.d.	780.364	100 HRK
HPB-R-A	Hrvatska poštanska banka d.d.	531.618	1.100 HRK
HPRK-R-A	Hotel Park d.d.	3.000	3000 HRK
HRBC-R-A	Rabac, ugostiteljstvo i turizam d.d.	1.012.220	100 DEM
HSRE-R-A	Hoteli Srebreno d.d.	482.000	100 HRK
HSTS-R-A	Hotel Split d.d.	36.323	3100 HRK
IKOM-R-A	IKOM Industrija komunalne opreme i mjerila d.d.	78.142	100 DEM
IMES-R-A	Imes d.d.	53.276	100 DEM
INFS-R-A	INFOSISTEM d.d.	53.557	400 HRK
IPKK-R-A	IPK KANDIT d.d.	543.490	100 HRK
IPKT-R-A	IPK TVORNICA ULJA ČEPIN d.d.	564.694	100 HRK
JLSA-R-A	Jelsa d.d.	1.057.758	100 HRK
JTMN-R-A	Jadran d.d. Tvornica metalnog namještaja	173.560	300 HRK
KIM-R-A	KIM MLJEKARA KARLOVAC d.d.	104.472	300 HRK
KMKA-R-A	Kemika d.d.	95.259	300 HRK
KODS-R-A	Kordun Slunj d.d.	106.427	100 HRK
KORF-R-A	DOM HOLDING d.d.	8.113.359	100 HRK
KRDN-R-A	Kordun d.d. Karlovac	256.320	100 DEM
KRNA-R-A	Korana d.d.	200.406	200 HRK
LOVI-R-A	Lovinčić d.d.	419.506	200 HRK
MLDN-R-A	Mladina d.d.	96.098	300 HRK
MCML-R-A	MACROMEL d.d.	150.000	10000 HRK
MLDN-R-A	Mladina d.d.	96.098	300 HRK
MRNR-R-A	Mornar d.d.	52.510	100 DEM
MSLK-R-A	Moslavka d.d.	191.732	200 HRK
NACE-R-A	Našicecement d.d.	644.329	400 HRK
PRFC-R-A	PROFICIO d.d.	3.912.908	100 HRK
PSBA-R-A	Primus banka d.d.	101.700	500 HRK
PUNT-R-A	POUNJE Trikotaža d.d.	266.000	100 HRK
PZDL-R-A	Požeška dolina d.d.	120.339	100 DEM
RIVP-R-A	Riviera Holding d.d.	3.653.517	300 HRK
RTKO-R-A	Riječka tvornica konopa d.d.	130.260	200 HRK
SLBA-R-A	Slavonska banka d.d.	284.941	1300 HRK
SLPF-R-A	Slavonski ZIF, d.d.	3.346.418	100 HRK
SLPG-R-A	Solana Pag d.d.	75.846	100 DEM
SNHO-R-A	SN Holding d.d.	3.377.441	-

Symbol	Company name	Shares outstanding	Nominal value
SPTH-R-A	Svpetrvs hoteli d.d.	395.148	100 HRK
STBA-R-A	Splitska banka d.d.	3.634.783	100 HRK
SUNH-R-A	Sunčani Hvar d.d.	5.310.971	100 HRK
TRUM-R-A	Trgopromet Umag d.d.	214.072	100 HRK
VLBT-R-A	Velebit – ZIF, d.d.	3.406.550	100 HRK
VLHO-R-A	VALAMAR GRUPA d.d.	3.377.441	-
ZITP-R-A	Žitoproizvod d.d.	109.300	400 HRK
ZLAR-R-A	Zlatni rat d.d.	552.319	100 DEM
ZVZD-R-A	ZVIJEZDA d.d.	100.257	2000 HRK
Parallel Market			
Preferred stocks			
GKBA-P-A	Gospodarsko-kreditna banka d.d.	220.000	100 HRK
SPTH-P-A	Svpetrvs hoteli d.d.	45.952	100 HRK

4. Listed Bonds

Symbol	Issuer	Nominal value	Issued volume	Interest	Maturity
Official Market					
AGKR-O-074A	AGROKOR d.d.	1 EUR	230.000.000	11%	3.4.2007
ATGR-O-074A	ATLANTIC GRUPA d.o.o.	1 EUR	15.000.000	5,75%	13.7.2007
BLSC-O-091	Belišće d.d.	1 EUR	8.000.000	5,500%	14.1.2009
BNAI-O-22CA	Bina Istra d.d.	1 EUR	210.000.000	8%	15.12.2022
FNOI-D-067A	Fund for the Restitution of Deprived Property	5.11 EUR	300.000	\	1.7.2006
FNOI-D-071A	Fund for the Restitution of Deprived Property	5.11 EUR	300.000	\	1.1.2007
FNOI-D-077A	Fund for the Restitution of Deprived Property	5.11 EUR	300.000	\	1.7.2007
FNOI-D-081A	Fund for the Restitution of Deprived Property	5.11 EUR	300.000	\	1.1.2008
FNOI-D-087A	Fund for the Restitution of Deprived Property	5.11 EUR	300.000	\	1.7.2008
FNOI-D-091A	Fund for the Restitution of Deprived Property	5.11 EUR	300.000	\	1.1.2009
FNOI-D-097A	Fund for the Restitution of Deprived Property	5.11 EUR	300.000	\	1.7.2009
FNOI-D-101A	Fund for the Restitution of Deprived Property	5.11 EUR	300.000	\	1.1.2010
FNOI-D-107A	Fund for the Restitution of Deprived Property	5.11 EUR	300.000	\	1.7.2010
FNOI-D-111A	Fund for the Restitution of Deprived Property	5.11 EUR	300.000	\	1.1.2011
FNOI-D-117A	Fund for the Restitution of Deprived Property	5.11 EUR	300.000	\	1.7.2011
FNOI-D-121A	Fund for the Restitution of Deprived Property	5.11 EUR	300.000	\	1.1.2012
FNOI-D-127A	Fund for the Restitution of Deprived Property	5.11 EUR	300.000	\	1.7.2012
FNOI-D-131A	Fund for the Restitution of Deprived Property	5.11 EUR	300.000	\	1.1.2013
FNOI-D-137A	Fund for the Restitution of Deprived Property	5.11 EUR	300.000	\	1.7.2013
FNOI-D-141A	Fund for the Restitution of Deprived Property	5.11 EUR	300.000	\	1.1.2014
FNOI-D-147A	Fund for the Restitution of Deprived Property	5.11 EUR	300.000	\	1.7.2014
FNOI-D-151A	Fund for the Restitution of Deprived Property	5.11 EUR	300.000	\	1.1.2015
FNOI-D-157A	Fund for the Restitution of Deprived Property	5.11 EUR	300.000	\	1.7.2015
FNOI-D-161A	Fund for the Restitution of Deprived Property	5.11 EUR	300.000	\	1.1.2016
FNOI-D-167A	Fund for the Restitution of Deprived Property	5.11 EUR	300.000	\	1.7.2016
FNOI-D-171A	Fund for the Restitution of Deprived Property	5.11 EUR	300.000	\	1.1.2017
FNOI-D-177A	Fund for the Restitution of Deprived Property	5.11 EUR	300.000	\	1.7.2017
FNOI-D-181A	Fund for the Restitution of Deprived Property	5.11 EUR	300.000	\	1.1.2018
FNOI-D-187A	Fund for the Restitution of Deprived Property	5.11 EUR	300.000	\	1.7.2018
FNOI-D-191A	Fund for the Restitution of Deprived Property	5.11 EUR	300.000	\	1.1.2019

Symbol	Issuer	Nominal value	Issued volume	Interest	Maturity
FNOI-D-197A	Fund for the Restitution of Deprived Property	5.11 EUR	300.000	\	1.7.2019
GDKC-O-116A	City of Koprivnica	1 HRK	60.000.000	6,5%	29.6.2011
GDZD-O-119A	City of Zadar	1 EUR	18.500.00	5,5%	1.9.2011
HBOR-O-112A	Croatian bank for reconstruction and development	1 EUR	300.000.000	4,875%	11.2.2011
HYBA-O-086A	Hypo Alpe-Adria Bank d.d.	1 HRK	150.000.000	6.500%	6.6.2008
PLVA-O-115A	PLIVA d.d.	1 EUR	75.000.000	5,750%	12.5.2011
PODR-O-072A	Podravka d.d.	1 EUR	27.000.000	5,000%	20.2.2007
RBA-O-112A	Raiffeisenbank Austria d.d.	1 HRK	600.000.000	4,125%	13.2.2011
RHMF-O-077A	Republic of Croatia	1 EUR	400.000.000	3,875%	7.7.2007
RHMF-O-085A	Republic of Croatia	1 HRK	1.000.000.000	6.125%	28.5.2008
RHMF-O-08CA	Republic of Croatia	1 EUR	200.000.000	6,875%	14.12.2008
RHMF-O-125A	Republic of Croatia	1 EUR	500.000.000	6.875%	23.5.2012
RHMF-O-142A	Republic of Croatia	1 EUR	650.000.000	5,500%	10.2.2014
RHMF-O-15CA	Republic of Croatia	1 HRK	5.500.000.000	5,250%	15.12.2015
RHMF-O-157A	Republic of Croatia	1 EUR	350.000.000	4,250%	14.7.2015
RHMF-O-19BA	Republic of Croatia	1 EUR	200.000.000	5,375%	29.11.2019

5. Listed Certificates

Symbol	Issuer	Nominal value	Issued volume
RHMJ-A-A	Republic of Croatia, Ministry of Construction	1 HRK	400.000.000
RHMF-A-A	Republic of Croatia, Ministry of Finance	1 HRK	644.750.000

6. Listed Commercial Papers

Symbol	Issuer	Nominal value	Issued volume
Official Market			
BLSC-M-618A	Belišće d.d.	1 HRK	10.000.000
MDKA-M-645A	Medika d.d.	1 HRK	40.000.000
Regular Market			
ATPL-M-713A	Atlantska plovidba d.d.	1 HRK	40.000.000
DLKV-M-704A	Dalekovod d.d.	1 HRK	75.000.000
INGR-M-647A	Ingra d.d.	1 HRK	25.000.000
INGR-M-710A	Ingra d.d.	1 HRK	30.000.000
JDRA-M-628A	Jadranka d.d.	1 HRK	10.000.000
JDRA-M-638A	Jadranka d.d.	1 HRK	7.500.000
LURA-M-637A	Lura d.d.	1 HRK	45.000.000
MGMA-M-707A	Magma	1 HRK	30.000.000

7. Methodological remarks

- 1) High is the highest trading price for the share in the selected period of time.
- 2) Low is the lowest trading price for the share in the selected period of time.
- 3) Last is the price of the last trade for the share in the selected period of time.
- 4) Market capitalization of the whole Exchange is calculated by multiplying the last price and the number of outstanding shares. If the share was not traded in the last month, one half of the market capitalization is added to the market capitalization of the whole Exchange. If the share was not traded in the last three months, only one quarter of the market capitalisation is added to the market capitalization of the whole Exchange.
- 5) The performance of shares is calculated with the last prices in the compared periods.
- 6) For the price curve daily closing prices are used.
- 7) Reported trades are trades with bonds greater then 3,000,000 HRK in accordance with the Zagreb Stock Exchange Rules.
- 8) Institutional trades are trades reported to the Zagreb Stock Exchange by intitutional investors in accordance with Securities Law.