



**ZAGREBAČKA BURZA**  
THE ZAGREB STOCK EXCHANGE

# Trading Summary

## First half of 2006

**Zagreb, July 2006**

## The Zagreb Stock Exchange information

### 1. INTERNET

<http://www.zse.hr/>

### 2. REUTERS

ZAGSTOCK, ZAGSTOCL - daily shares prices

SEZH - daily bonds prices

.CRBEX - CROBEX index

.CRBEX (chain) - CROBEX index constituents-by RIC code

CRBEX.ZA (chain) - CROBEX index constituents-by company

MAIN.ZA (chain) - Zagreb Stock Exchange shares

**This report or any part thereof may be reprinted, copied or redistributed in any way only with prior written permission and full credit.**

The information contained herein is compiled and collected with care, but total accuracy and/or completeness is not guaranteed by the Zagreb Stock Exchange (ZSE). This publication is issued with the express condition to which everyone purchasing and making use thereof assents that no liability shall be incurred by ZSE. This publication is issued for information purposes only and is not to be construed in any way as an invitation to purchase or sell any security mentioned herein. ZSE recommends to any potential investor to seek professional advice before investing.

Copyright © 2006 by The Zagreb Stock Exchange  
Zagreb  
Ksaver 200  
Croatia

# Contents:

- 1. COMPARISON WITH PREVIOUS HALF..... 2**
- 2. TRADING..... 3**
  - 2.1. MONTHLY TRADING OVERVIEW..... 3
  - 2.2. STOCKS WITH THE LARGEST MARKET CAPITALIZATION..... 5
  - 2.3. MOST ACTIVE STOCKS BY TURNOVER ..... 5
  - 2.4. STOCKS PERFORMANCE..... 6
  - 2.5. BONDS PERFORMANCE ..... 8
  - 2.6. CERTIFICATES PERFORMANCE ..... 10
  - 2.7. COMMERCIAL PAPERS PERFORMANCE ..... 10
  - 2.8. TOP 10 MEMBERS BY EQUITY TURNOVER..... 10
  - 2.9. TOP 10 MEMBERS BY BONDS TURNOVER..... 11
  - 2.10. TOP 10 MEMBERS BY TOTAL TURNOVER ..... 11
  - 2.11. BEST PERFORMING STOCKS..... 11
  - 2.12. UNDER PERFORMING STOCKS ..... 12
  - 2.13. FINANCIAL RATIOS..... 12
- 3. PRICES AND VOLUMES FOR THE MOST ACTIVE STOCKS..... 13**
- 4. LISTED COMPANIES ..... 16**
- 5. LISTED BONDS ..... 20**
- 6. LISTED CERTIFICATES..... 21**
- 7. LISTED COMMERCIAL PAPERS ..... 22**
- 8. METHODOLOGICAL REMARKS ..... 22**

# 1. Comparison with Previous Half

(Turnover and Market Capitalization in millions of HRK)

	Second half of 2005	First half of 2006	% change
<b>Regular turnover:</b>			
Equities	2.067,8	5.792,3	180,1
Bonds	341,5	332,2	-2,7
Certificates	1,7	5,1	192,5
Commercial papers	0,0	3,2	-
<b>Reported turnover*</b>	2.548,0	3.350,2	31,5
<b>Institutional turnover**</b>	15.133,4	16.125,2	6,6
<b>Total</b>	20.092,5	25.608,1	27,5
<b>Regular volume:</b>			
Equities	5.154.705	10.441.041	102,6
Bonds	143.467.965	129.979.814	-9,4
Certificates	2.240.335	6.474.188	189,0
Commercial papers	0	3.300.000	-
<b>Reported volume*</b>	779.352.909	1.834.000.000	135,3
<b>Institutional volume**</b>	5.356.110.118	8.587.001.547	60,3
<b>Total</b>	6.286.326.032	10.571.196.590	68,2
<b>CROBEX<sup>©</sup></b>	1.997,5	2.713,5	35,8
<b>CROBIS<sup>©</sup></b>	105,8208	101,1439	-4,4
<b>Total number of trades</b>	46.186	66.490	44,0
<b>Number of securities traded</b>	154	167	8,4
<b>Market Capitalization</b>			
Equities	80.724,5	110.838,6	37,3
Bonds	34.399,4	36.529,2	6,2
<b>Total</b>	115.123,9	147.367,8	28,0
<b>Number of trading days</b>	127	124	-2,4
<b>Number of listed shares</b>			
Official Market	6	7	16,7
JDD Market	126	129	2,4
Parallel Market	62	63	1,6
<b>Daily average:</b>			
Turnover	158,21	206,52	30,5
Volume	49.498.630	85.251.585	72,2
Number of trades	364	536	47,4
<b>Exchange rate at the end of period</b>	6,2354	5,7903	-7,1

\*Reported trades are trades with bonds greater than 3,000,000 HRK in accordance with the Zagreb Stock Exchange Rules.

\*\*Institutional trades are trades reported to the Exchange by institutional investors in accordance with Securities Law.

## 2. Trading

### 2.1. Monthly Trading Overview

(Market Capitalization in millions of HRK)

Month	Number of trades		Volume		Number of securities traded	Market Capitalization
	Total	Average daily	Total	Average daily		
January	7.527	358	1.630.368.084	77.636.575	105	119.906,9
February	11.584	579	1.569.869.934	78.493.497	100	124.937,3
March	16.014	696	1.248.677.773	54.290.338	103	137.672,3
April	10.347	575	1.321.736.601	73.429.811	105	141.172,6
May	12.635	574	3.818.798.449	173.581.748	103	144.028,1
June	8.383	419	981.745.749	49.087.287	119	147.367,8
<b>Total</b>	<b>66.490</b>	<b>536</b>	<b>10.571.196.590</b>	<b>85.251.585</b>	<b>167</b>	

(Turnover in millions of HRK and average value of transaction in thousands of HRK)

Month	Equity		Bonds		Total turnover
	Turnover	% total turnover	Turnover	% total turnover	
January	301,1	8,8	3.130,8	91,2	3.431,9
February	554,3	13,9	3.435,5	86,1	3.991,1
March	1.153,5	24,6	3.532,2	75,3	4.689,0
April	709,3	21,5	2.583,4	78,4	3.294,0
May	961,3	15,7	5.160,0	84,2	6.126,8
June	2.112,9	51,8	1.959,3	48,1	4.075,4
<b>Total</b>	<b>5.792,3</b>	<b>22,6</b>	<b>19.801,2</b>	<b>77,3</b>	<b>25.608,1</b>

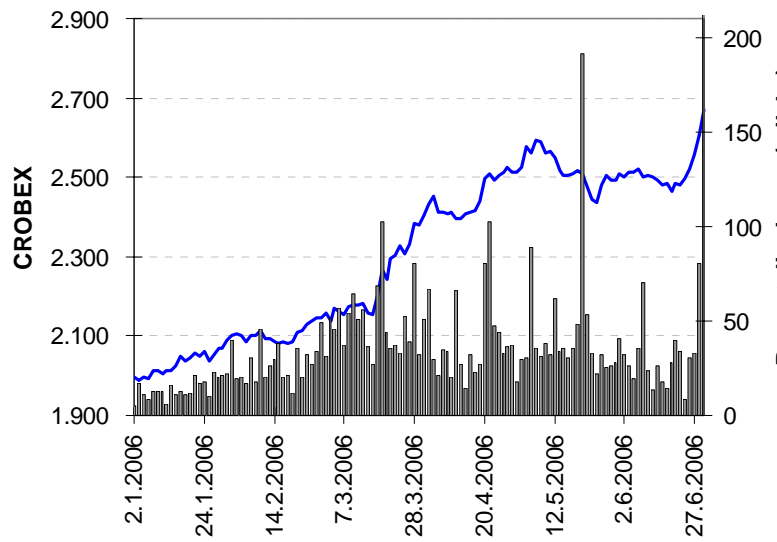


Chart 1: CROBEX<sup>®</sup> and equity turnover

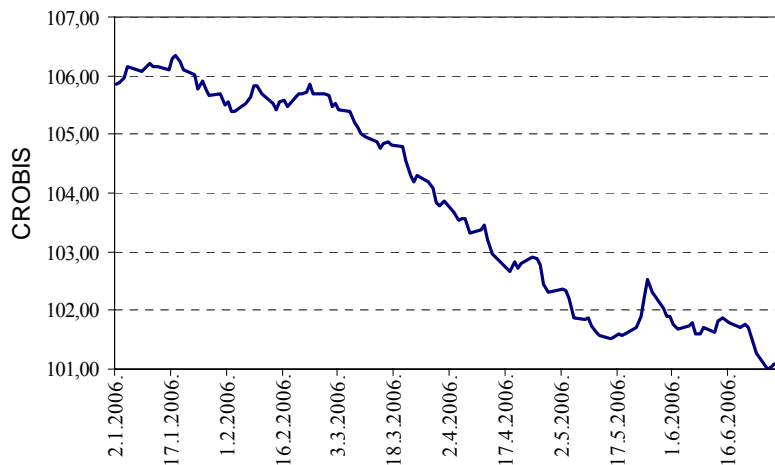


Chart 2: Zagreb Stock Exchange bond index CROBIS<sup>®</sup>

## 2.2. Stocks with the Largest Market Capitalization

(Market capitalization in millions of HRK)

	Symbol	Market Cap 30.06.2006.	Pct. of Mkt Cap	Cumulative percentage
1	ZABA-R-A	17.816,3	16,1	16,1
2	PLVA-R-A	14.130,4	12,7	28,8
3	PBZ-R-A	13.161,4	11,9	40,7
4	RIBA-R-A	6.621,2	6,0	46,6
5	STBA-R-A	5.759,6	5,2	51,8
6	KNZM-R-A	3.153,2	2,8	54,7
7	ERNT-R-A	2.729,9	2,5	57,1
8	ADRS-P-A	2.374,4	2,1	59,3
9	ZAPI-R-A	2.239,8	2,0	61,3
10	PODR-R-A	2.162,6	1,9	63,2
	Others	40.765,9	36,8	100,0
	<b>Total</b>	<b>110.914,8</b>		

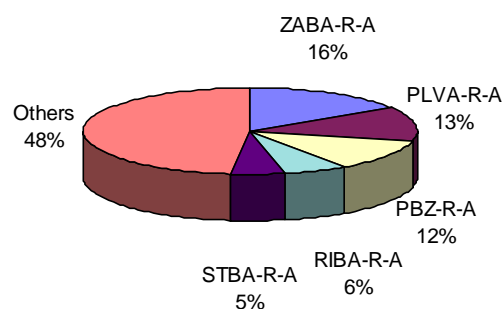


Chart 3: Market Capitalization

## 2.3. Most Active Stocks by Turnover

(Turnover in millions of HRK)

	Symbol	Turnover	Pct.	Cumulative percentage
1	PLVA-R-A	2.934,9	50,7	50,7
2	PODR-R-A	478,2	8,3	58,9
3	ADRS-P-A	422,0	7,3	66,2
4	ATPL-R-A	167,9	2,9	69,1
5	VIRO-R-A	107,2	1,8	71,0
6	DLKV-R-A	100,9	1,7	72,7
7	PBZ-R-A	91,4	1,6	74,3
8	JDPL-R-A	76,8	1,3	75,6
9	PTKM-R-A	69,9	1,2	76,8
10	LKPC-R-A	68,0	1,2	78,0
	Othersi	1.275,2	22,0	100,0
	<b>Total</b>	<b>5.792,3</b>		

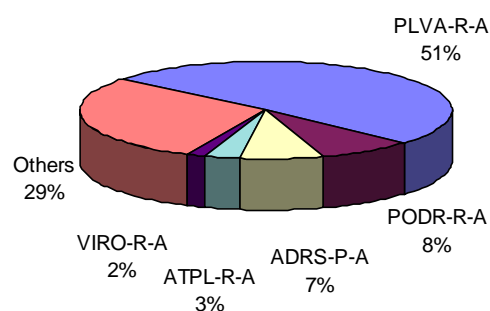


Chart 4: Structure of equity turnover

## 2.4. Stocks Performance

(All prices and turnover in Kunas, market capitalization in millions of Kunas)

Symbol	High	Low	Last	Average	Date	Net change	Volume	Turnover	Market Cap.
<b>Official Market</b>									
CROS-P-A	6.500,00	5.200,02	6.100,00	5.695,44	30.6.2006	7,0	1.508	8.588.728	53,4
CROS-R-A	7.000,00	5.352,00	6.300,00	6.119,89	30.6.2006	11,3	4.651	28.463.627	1.937,9
ISTT-R-A	320,00	197,20	300,00	250,05	30.6.2006	48,1	122.777	30.700.665	1.402,5
MDKA-R-A	11.400,00	8.100,01	10.500,00	9.433,11	30.6.2006	24,3	5.046	47.599.488	317,0
PLVA-R-A	764,99	406,02	760,00	620,98	30.6.2006	83,1	4.726.267	2.934.924.033	14.130,4
PODR-R-A	452,00	315,01	399,00	394,43	30.6.2006	25,5	1.212.325	478.180.202	2.162,6
VIRO-R-A	548,00	369,00	529,89	461,31	30.6.2006	9,9	232.287	107.156.763	734,8
<b>JDD Market</b>									
ADPL-R-A	155,00	106,00	131,00	131,44	30.6.2006	19,1	17.451	2.293.712	385,1
ADRS-P-A	3.588,00	3.013,00	3.500,00	3.296,20	30.6.2006	7,9	128.033	422.022.862	2.374,4
AMDN-R-A	250,00	230,00	250,00	243,49	7.2.2006	25,0	307	74.750	191,3
ARNT-R-A	340,00	251,06	310,00	293,55	30.6.2006	10,7	202.626	59.480.067	676,6
ATLS-R-A	117,00	80,00	113,30	97,83	30.6.2006	33,3	365.409	35.747.176	215,8
ATPL-R-A	850,00	712,04	840,00	806,00	30.6.2006	-0,6	208.258	167.856.141	1.144,3
AUHR-R-A	37.000,00	12.501,00	32.999,00	25.266,57	29.6.2006	120,0	1.992	50.331.000	590,2
BD62-R-A	480,00	302,91	430,00	394,09	30.6.2006	34,4	56.484	22.259.847	323,4
BDMR-R-A	3.000,00	1.599,00	2.500,00	1.846,25	28.6.2006	51,5	2.063	3.808.806	248,3
BLSC-R-A	603,00	425,01	570,00	524,00	30.6.2006	29,5	64.425	33.758.448	663,7
CEBA-P-A	797,00	410,00	635,00	579,42	30.6.2006	27,0	54.776	31.738.147	39,7
CEBA-R-A	1.100,00	550,00	900,00	856,60	30.6.2006	53,8	25.138	21.533.335	255,8
CRBT-R-A	350,00	225,01	266,00	279,18	30.6.2006	47,8	688	192.075	47,9
DLKV-R-A	683,99	397,00	648,00	520,34	30.6.2006	59,6	193.853	100.869.079	1.486,4
DLMC-R-A	921,00	850,00	921,00	890,57	12.5.2006	8,4	7	6.234	1.565,7
ELKA-R-A	130,00	104,05	106,51	118,70	30.6.2006	-11,2	65.739	7.803.249	163,7
ELKP-R-A	550,00	550,00	550,00	550,00	31.1.2006	0,0	1	550	49,4
ELPR-R-A	340,00	250,00	290,00	303,21	30.6.2006	8,2	136.686	41.445.043	97,1
ERNT-R-A	2.185,00	1.856,00	2.050,00	2.017,32	29.6.2006	7,1	25.535	51.512.366	2.729,9
EXCL-R-A	350,00	115,00	349,00	212,66	2.5.2006	168,5	1.753	372.791	165,8
FNVC-R-A	550,00	439,99	488,99	486,32	30.6.2006	11,4	31.276	15.210.012	302,1
FRNK-R-A	2.600,00	1.814,11	2.260,01	2.070,05	30.6.2006	20,3	9.700	20.079.445	965,4
HDEL-R-A	200,00	120,01	136,34	162,69	23.6.2006	157,2	639	103.962	85,1
HICZ-R-B	1.190,00	300,01	800,00	819,37	24.5.2006	110,5	2.892	2.369.615	695,9
HMAM-R-A	258,00	180,00	258,00	189,52	31.3.2006	38,7	770	145.930	288,8
HPDG-R-A	135,50	135,50	135,50	135,50	3.5.2006	0,0	61	8.266	49,6
HRDH-R-A	250,00	160,62	209,00	192,29	30.6.2006	10,0	20.396	3.922.007	176,1
HUPZ-R-A	1.840,00	1.450,00	1.749,00	1.673,36	30.6.2006	16,6	24.338	40.726.177	897,8
IGH-R-A	3.449,00	2.700,00	3.370,00	3.030,97	30.6.2006	24,8	21.430	64.953.763	534,4
ILRA-R-A	515,00	400,00	500,00	490,66	19.5.2006	25,0	952	467.110	124,7
JDBA-R-A	10.050,00	6.449,21	9.400,00	8.624,93	30.6.2006	46,9	3.740	32.257.237	342,2
JDKM-R-A	399,00	200,00	292,00	243,67	18.4.2006	46,0	7.188	1.751.493	63,5
JDPL-R-A	330,00	198,00	234,00	217,91	30.6.2006	-19,3	352.367	76.783.274	383,0
JMNC-R-A	59.999,98	28.000,00	56.000,00	50.152,38	30.6.2006	115,4	446	22.367.963	1.239,1
JNAF-R-A	2.940,00	1.840,00	2.749,90	2.331,90	30.6.2006	45,5	14.735	34.360.494	2.042,8
KABA-P-A	200,00	100,09	200,00	136,37	2.5.2006	135,0	766	104.461	2,2
KABA-R-A	325,00	155,00	260,00	228,98	30.6.2006	71,6	26.299	6.021.837	185,6



Symbol	High	Low	Last	Average	Date	Net change	Volume	Turnover	Market Cap.
KBZ-R-A	238,00	207,50	215,00	219,84	27.6.2006	-8,5	106.875	23.495.488	283,8
KNZM-R-A	27.000,00	12.001,00	25.000,00	20.274,51	30.6.2006	100,0	1.882	38.156.624	3.153,2
KODT-P-A	1.000,00	656,04	1.000,00	759,56	29.6.2006	53,6	4.791	3.639.072	30,7
KODT-R-A	1.000,00	700,00	1.000,00	887,93	30.6.2006	28,2	966	857.736	73,3
KOEI-R-A	420,00	280,10	415,00	360,48	30.6.2006	45,1	184.313	66.440.361	1.044,6
KOSK-P-A	150,00	150,00	150,00	150,00	27.4.2006	0,0	119	17.850	6,1
KRAS-R-A	698,98	560,02	650,00	610,53	30.6.2006	18,0	19.784	12.078.688	892,9
LEDO-R-A	3.100,00	3.100,00	3.100,00	3.100,00	22.2.2006	44,2	3	9.300	682,5
LKPC-R-A	1.800,00	1.000,00	1.600,00	1.527,42	30.6.2006	42,9	44.551	68.048.148	356,2
LKRI-R-A	176,00	176,00	176,00	176,00	31.1.2006	23,9	78	13.728	530,1
LLRB-R-A	390,00	162,50	300,00	269,79	30.6.2006	65,7	19.653	5.302.163	38,1
LPML-R-A	860,00	500,00	610,02	612,68	30.6.2006	306,7	2.036	1.247.408	43,2
LRH-R-A	2.750,00	2.750,00	2.750,00	2.750,00	26.1.2006	0,0	1	2.750	832,3
LURA-R-A	460,01	400,00	400,00	430,67	28.6.2006	-11,1	1.511	650.749	1.200,0
LVCV-R-A	550,00	340,00	420,00	491,82	2.6.2006	250,0	4.472	2.199.434	195,6
MAIS-R-A	220,00	158,00	200,00	196,66	27.6.2006	25,0	14.407	2.833.273	2.051,5
MDPL-R-A	106,00	101,00	104,00	104,96	31.3.2006	-1,0	1.818	190.809	16,2
MLNR-R-A	999,00	221,00	530,00	567,76	30.6.2006	35,9	10.812	6.138.607	103,6
MMBA-R-A	1.448,99	800,00	1.400,00	1.268,96	30.6.2006	55,7	1.037	1.315.911	447,7
PBZ-R-A	805,00	582,32	790,00	707,70	30.6.2006	35,7	129.136	91.389.087	13.161,4
PLAG-R-A	3.750,00	2.580,00	3.500,02	3.113,72	30.6.2006	33,1	8.793	27.378.951	1.912,1
POBA-R-A	400,00	187,10	300,00	242,66	24.5.2006	50,0	975	236.593	96,0
PTKM-R-A	175,00	103,01	135,98	136,16	30.6.2006	19,3	513.619	69.936.867	336,1
PUNT-R-A	46,69	32,73	37,98	38,16	30.6.2006	-0,1	114.212	4.358.234	10,1
RIBA-R-A	530,00	352,01	500,00	428,17	30.6.2006	35,5	17.851	7.643.223	6.621,2
RIZO-R-A	350,00	151,00	195,00	276,63	30.6.2006	-37,9	2.023	559.616	26,5
SDBA-R-A	222,00	140,00	210,00	190,97	30.6.2006	47,8	14.039	2.681.088	66,4
TDZ-R-A	2.300,00	1.550,00	1.800,00	1.957,41	21.6.2006	-21,7	336	657.691	584,7
THNK-R-A	3.476,00	1.800,00	3.304,00	2.754,01	30.6.2006	83,6	17.163	47.267.146	626,0
TISK-R-A	490,00	350,00	400,00	426,71	30.6.2006	-2,4	32.980	14.072.942	954,6
TLM-R-A	190,00	79,05	163,00	140,79	24.3.2006	106,2	105.074	14.792.875	299,9
TNPL-R-A	3.120,00	2.650,01	3.031,00	2.880,54	30.6.2006	6,4	17.302	49.839.158	1.898,6
TOZ-R-A	230,00	117,00	170,00	156,45	30.6.2006	34,8	51.588	8.070.784	42,0
TRFM-R-A	1.015,00	863,00	980,00	954,48	30.6.2006	0,0	7.438	7.099.457	35,3
TRMD-R-A	100,00	100,00	100,00	100,00	13.6.2006	0,0	312	31.200	23,1
ULPL-R-A	2.694,96	2.113,00	2.440,00	2.395,89	30.6.2006	3,6	5.074	12.156.736	457,5
ULJN-R-A	170,00	125,05	155,00	148,75	30.6.2006	17,9	13.215	1.965.673	346,6
VDKT-R-A	1.170,00	1.170,00	1.170,00	1.170,00	19.4.2006	25,8	45	52.650	404,6
VJSN-R-A	80,00	70,04	71,00	71,03	7.4.2006	1,4	14.017	995.689	75,4
VPIK-R-A	130,00	87,00	101,00	102,79	29.6.2006	16,1	434	44.612	143,6
ZABA-P-B	5.000,00	3.600,00	4.381,09	4.276,35	26.6.2006	18,4	301	1.287.181	49,6
ZABA-R-A	6.700,00	4.100,00	6.200,00	5.487,90	30.6.2006	53,1	9.677	53.106.370	17.816,3
ZAPI-R-A	3.850,00	3.250,00	3.610,00	3.613,38	28.6.2006	3,4	4.412	15.942.243	2.239,8
ZLJS-R-A	500,00	250,00	250,00	412,95	31.5.2006	-32,4	56	23.125	28,3
<b>Parallel Market</b>									
BRNK-R-A	300,00	205,00	205,00	225,29	26.4.2006	-6,8	5.221	1.176.240	27,1
CHAG-R-A	1.479,00	1.479,00	1.479,00	1.479,00	1.2.2006	0,0	20	29.580	186,3
HARG-R-A	268,00	267,00	267,00	267,01	28.6.2006	-0,4	802	214.139	49,7
HRBC-R-A	303,00	279,00	303,00	289,76	16.3.2006	8,2	3.357	972.739	306,7
INFS-R-A	305,00	305,00	305,00	305,00	9.2.2006	0,0	79	24.095	16,3

Symbol	High	Low	Last	Average	Date	Net change	Volume	Turnover	Market Cap.
IPKT-R-A	120,00	76,00	101,00	101,46	26.4.2006	57,8	650	65.950	57,0
ISAP-R-A	1.224,00	1.223,00	1.223,00	1.223,50	24.4.2006	0,0	1.233	1.508.576	8,7
ISAP-R-B	1.600,00	1.500,00	1.600,00	1.534,27	24.4.2006	0,0	286	438.800	6,5
ISAP-R-C	18.000,00	18.000,00	18.000,00	18.000,00	24.4.2006	0,0	6	108.000	2,2
KAPI-R-A	1.810,00	1.804,59	1.804,59	1.805,40	13.1.2006	0,0	250	451.351	922,6
KMKA-R-A	450,00	150,00	300,00	319,10	20.4.2006	-4,8	267	85.200	28,6
KODS-R-A	32,00	15,01	20,10	22,77	11.5.2006	-13,4	2.180	49.643	2,1
KORF-R-A	138,00	124,25	124,25	132,60	31.5.2006	-8,0	2.284	302.852	1.008,1
MLDN-R-A	365,00	192,00	350,00	279,87	30.6.2006	62,8	3.241	907.064	33,6
PRFC-R-A	74,00	74,00	74,00	74,00	7.4.2006	-12,9	60	4.440	289,6
RIVP-R-A	420,00	318,00	411,00	381,87	30.6.2006	20,9	74.367	28.398.500	1.501,6
SLBA-R-A	2.700,00	2.200,00	2.350,00	2.421,36	29.6.2006	3,6	5.740	13.898.613	1.362,8
SLPF-R-A	70,75	57,11	69,80	60,65	29.6.2006	15,4	173.878	10.546.158	233,6
SNHO-R-A	150,00	140,00	150,00	143,04	8.3.2006	-6,3	214	30.610	506,6
STBA-R-A	1.450,00	301,00	1.265,06	351,72	27.6.2006	320,3	2.580	907.436	5.759,6
SUNH-R-A	290,00	124,00	260,00	173,49	30.6.2006	102,3	244.908	42.488.691	1.380,9
VDMV-R-A	180,00	135,02	137,00	148,90	30.5.2006	-5,5	6.733	1.002.538	5,6
VLHO-R-A	100,00	100,00	100,00	100,00	31.1.2006	-8,3	149	14.900	337,7
ZLAR-R-A	402,00	301,52	364,00	360,10	30.6.2006	13,8	39.275	14.142.831	201,0

## 2.5. Bonds performance

(all prices in % of par value, turnover in Kunas)

	High	Low	Last	Date	Volume	Turnover
<b>Regular trades</b>						
AGKR-O-074A	105,10	104,45	104,45	23.2.2006	51.000	389.159
ATGR-O-077A	102,30	100,80	100,80	21.6.2006	7.000	51.822
FNOI-D-067A	97,13	97,13	97,13	9.3.2006	125.195	8.908
FNOI-D-071A	92,47	92,47	92,47	9.3.2006	125.195	8.481
FNOI-D-077A	87,00	87,00	87,00	23.1.2006	125.195	8.041
FNOI-D-081A	82,82	82,82	82,82	23.1.2006	125.195	7.655
FNOI-D-087A	78,89	78,89	78,89	23.1.2006	125.195	7.292
FNOI-D-091A	82,04	75,10	82,04	8.6.2006	239.659	13.752
FNOI-D-097A	78,97	71,55	78,97	8.6.2006	239.659	13.169
GDKC-O-116A	101,80	101,80	101,80	9.6.2006	150.000	119.979
HYBA-O-086A	104,80	104,10	104,10	2.6.2006	50.000	52.260
PLVA-O-115A	107,30	102,50	102,50	28.6.2006	1.145.000	8.981.081
PODR-O-072A	100,15	100,00	100,00	3.5.2006	70.000	512.967
RBA-O-112A	101,80	97,00	97,60	16.6.2006	11.354.000	11.135.637
RHMF-O-077A	100,50	99,45	99,45	16.6.2006	1.112.365	8.115.842
RHMF-O-085A	106,10	103,25	103,35	30.6.2006	16.473.821	17.202.044
RHMF-O-08CA	109,40	105,40	105,40	15.5.2006	2.089.000	16.502.123
RHMF-O-103A	111,40	107,30	107,70	26.6.2006	8.164.077	8.988.831
RHMF-O-125A	118,40	110,00	110,40	30.6.2006	4.759.500	39.219.294
RHMF-O-142A	112,50	104,60	104,60	6.6.2006	9.808.100	80.022.183
RHMF-O-157A	103,85	95,75	95,75	26.6.2006	7.839.800	59.399.254
RHMF-O-15CA	111,15	105,15	105,40	27.6.2006	64.370.858	69.756.887
RHMF-O-19BA	117,15	107,55	107,55	27.4.2006	1.430.000	11.659.845
<b>TOTAL</b>					<b>129.979.814</b>	<b>332.176.506</b>

	High	Low	Last	Date	Volume	Turnover
<b>Reported trades*</b>						
AGKR-O-074A	105,14	105,14	105,14	23.2.2006	1.000.000	7.680.034
NEXE-O-116A	99,60	99,60	99,60	30.6.2006	100.000.000	99.600.000
RBA-O-112A	100,00	100,00	100,00	13.2.2006	4.000.000	4.000.000
RHMF-O-077A	100,60	99,20	99,20	30.6.2006	21.950.000	160.537.092
RHMF-O-085A	105,55	103,40	103,40	26.6.2006	35.000.000	36.515.000
RHMF-O-08CA	109,35	104,85	104,85	30.6.2006	16.750.000	132.105.802
RHMF-O-103A	111,70	107,50	107,75	30.6.2006	243.250.000	265.768.250
RHMF-O-125A	118,25	110,10	110,60	30.6.2006	53.850.000	451.214.156
RHMF-O-142A	112,45	104,50	104,50	30.6.2006	42.375.000	337.634.212
RHMF-O-157A	104,20	95,80	95,80	29.6.2006	36.500.000	269.948.214
RHMF-O-15CA	111,10	104,90	105,30	29.6.2006	1.250.325.000	1.349.274.425
RHMF-O-19BA	116,60	105,75	106,65	29.6.2006	29.000.000	235.873.106
<b>TOTAL</b>					<b>1.834.000.000</b>	<b>3.350.150.291</b>
<b>Institutional trades**</b>						
AGKR-O-074A	105,50	105,20	105,50	12.1.2006	2.700.000	20.978.548
ATGR-O-077A	102,80	101,45	101,45	29.5.2006	1.856.000	13.926.010
BLSC-O-091A	100,50	100,50	100,50	19.4.2006	300.000	2.201.734
FNOI-D-071A	96,47	96,47	96,47	21.6.2006	329.595	23.066
FNOI-D-077A	93,28	93,28	93,28	21.6.2006	329.595	22.303
FNOI-D-081A	90,16	90,16	90,16	21.6.2006	329.595	21.557
FNOI-D-087A	87,17	87,17	87,17	21.6.2006	329.595	20.843
FNOI-D-091A	84,24	84,24	84,24	21.6.2006	329.595	20.142
FNOI-D-097A	81,46	81,46	81,46	21.6.2006	329.595	19.477
FNOI-D-101A	78,73	78,73	78,73	21.6.2006	329.595	18.825
FNOI-D-107A	76,13	76,13	76,13	21.6.2006	329.595	18.203
FNOI-D-111A	73,58	73,58	73,58	21.6.2006	329.595	17.593
FNOI-D-117A	71,15	71,15	71,15	21.6.2006	329.595	17.012
FNOI-D-121A	68,77	68,77	68,77	21.6.2006	329.595	16.443
FNOI-D-127A	66,49	66,49	66,49	21.6.2006	329.595	15.898
FNOI-D-131A	64,26	64,26	64,26	21.6.2006	329.595	15.365
FNOI-D-137A	62,14	62,14	62,14	21.6.2006	283.094	12.762
FNOI-D-141A	60,05	60,05	60,05	21.6.2006	283.094	12.332
FNOI-D-147A	58,07	58,07	58,07	21.6.2006	283.094	11.926
FNOI-D-151A	56,12	56,12	56,12	21.6.2006	283.094	11.525
FNOI-D-157A	54,27	54,27	54,27	21.6.2006	283.094	11.145
FNOI-D-161A	52,45	52,45	52,45	21.6.2006	283.094	10.772
FNOI-D-167A	50,71	50,71	50,71	21.6.2006	283.094	10.414
FNOI-D-171A	49,01	49,01	49,01	21.6.2006	283.094	10.065
FNOI-D-177A	47,39	47,39	47,39	21.6.2006	283.094	9.732
FNOI-D-181A	45,81	45,81	45,81	21.6.2006	283.094	9.408
FNOI-D-187A	44,29	44,29	44,29	21.6.2006	283.094	9.096
FNOI-D-191A	42,81	42,81	42,81	21.6.2006	283.094	8.792
FNOI-D-197A	41,40	41,40	41,40	21.6.2006	283.094	8.502
GDZD-O-119A	107,95	104,55	104,55	4.4.2006	2.000.000	15.628.328
HYBA-O-086A	105,60	104,40	104,40	2.5.2006	41.105.000	43.072.100
MDKA-O-087A	102,00	99,50	99,50	10.5.2006	1.195.000	8.788.974
NEXE-O-116A	99,70	99,60	99,60	28.6.2006	4.000.000	3.986.000
PLVA-O-115A	107,30	101,70	101,70	28.6.2006	20.559.600	159.452.413
PODR-O-072A	101,20	100,35	100,35	10.4.2006	1.357.700	10.066.929
PODR-O-115A	99,90	99,65	99,72	20.6.2006	36.500.000	36.416.900

	High	Low	Last	Date	Volume	Turnover
RBA-O-112A	101,90	97,10	97,30	27.6.2006	369.329.000	367.723.183
RHMF-O-077A	100,75	97,40	99,30	27.6.2006	179.105.320	1.304.752.205
RHMF-O-085A	106,95	103,20	103,30	30.6.2006	291.071.901	304.482.039
RHMF-O-08CA	109,70	105,50	105,80	31.5.2006	38.303.000	299.982.292
RHMF-O-103A	111,90	107,40	107,60	30.6.2006	1.369.170.000	1.499.681.318
RHMF-O-125A	118,70	109,85	110,45	30.6.2006	183.929.000	1.541.036.675
RHMF-O-142A	112,80	103,60	104,50	30.6.2006	267.737.830	2.134.657.670
RHMF-O-157A	104,25	95,75	95,75	30.6.2006	187.914.239	1.383.488.685
RHMF-O-15CA	111,30	104,80	105,30	30.6.2006	5.439.661.000	5.875.616.136
RHMF-O-19BA	117,35	105,20	106,40	28.6.2006	134.692.000	1.092.524.798
<b>TOTAL</b>					<b>8.580.451.547</b>	<b>16.118.846.136</b>
<b>BONDS TOTAL</b>					<b>10.544.431.361</b>	<b>19.801.172.932</b>

\*Reported trades are trades with bonds greater than 3,000,000 HRK in accordance with the Zagreb Stock Exchange Rules.

\*\*Institutional trades are trades reported to the Exchange by institutional investors in accordance with Securities Law.

## 2.6. Certificates performance

(All prices in % of par value, turnover in Kunas)

Symbol	High	Low	Last	Date	Volume	Turnover
RHMF-A-A	79,00	76,00	79,00	29.5.2006	6.420.200	5.012.937
RHMJ-A-A	75,00	75,00	75,00	16.2.2006	53.988	40.491

## 2.7. Commercial papers performance

(All prices in % of par value, turnover in Kunas)

Symbol	High	Low	Last	Date	Volume	Turnover
<b>Regular trades</b>						
OPHR-M-720A	96,00	96,00	96,00	28.6.2006	3.300.000	3.168.000
<b>Total</b>					<b>3.300.000</b>	<b>3.168.000</b>
<b>Institutional trades</b>						
DLKV-M-704A	97,47	97,47	97,47	31.5.2006	2.150.000	2.095.605
INGR-M-647A	96,83	96,83	96,83	1.3.2006	3.000.000	2.904.900
MDKA-M-645A	98,19	98,19	98,19	31.5.2006	1.000.000	981.900
MGMA-M-707A	96,30	96,30	96,30	6.3.2006	400.000	385.200
<b>Total</b>					<b>6.550.000</b>	<b>6.367.605</b>

## 2.8. Top 10 Members by Equity Turnover

Rang	Member
1	Privredna banka Zagreb d.d.
2	Auctor d.o.o.
3	Fima vrijednosnice d.o.o.
4	Erste vrijednosni papiri d.o.o.
5	Interkapital vrijednosni papiri d.o.o.
6	Zagrebačka banka d.d.
7	Raiffeisenbank Austria d.d.
8	InterFinance d.o.o.
9	Hrvatska poštanska banka d.d.
10	Hypo Alpe-Adria-Bank d.d.

## 2.9. Top 10 Members by Bonds Turnover

Rang	Member
1	Interkapital vrijednosni papiri d.o.o.
2	Raiffeisenbank Austria d.d.
3	I.C.F. d.o.o.
4	Erste vrijednosni papiri d.o.o.
5	InterFinance d.o.o.
6	Hrvatska poštanska banka d.d.
7	Hypo Alpe-Adria-Bank d.d.
8	TO ONE brokeri d.o.o
9	Auctor d.o.o.
10	Volksbank d.d.

## 2.10. Top 10 Members by Total Turnover

Rang	Member
1	Interkapital vrijednosni papiri d.o.o.
2	Privredna banka Zagreb d.d.
3	Auctor d.o.o.
4	Raiffeisenbank Austria d.d.
5	Fima vrijednosnice d.o.o.
6	I.C.F. d.o.o.
7	Erste vrijednosni papiri d.o.o.
8	Zagrebačka banka d.d.
9	InterFinance d.o.o.
10	Hrvatska poštanska banka d.d.

## 2.11. Best performing stocks

*(All prices in Kunas)*

Symbol	Second half of 2005	First half of 2006	%
STBA-R-A	301,00	1.265,06	320,3
LPML-R-A	150,00	610,02	306,7
LVCV-R-A	120,00	420,00	250,0
EXCL-R-A	130,00	349,00	168,5
HDEL-R-A	53,01	136,34	157,2
KABA-P-A	85,10	200,00	135,0
AUHR-R-A	15.000,00	32.999,00	120,0
JMNC-R-A	26.000,00	56.000,00	115,4
HICZ-R-B	380,00	800,00	110,5
TLM-R-A	79,05	163,00	106,2

## 2.12. Under performing stocks

(All prices in Kunas)

Symbol	Second half of 2005	First half of 2006	%
RIZO-R-A	314,00	195,00	-37,9
ZLJS-R-A	370,00	250,00	-32,4
TDZ-R-A	2.300,00	1.800,00	-21,7
JDPL-R-A	290,00	234,00	-19,3
KODS-R-A	23,20	20,10	-13,4
PRFC-R-A	85,00	74,00	-12,9
ELKA-R-A	120,00	106,51	-11,2
LURA-R-A	450,00	400,00	-11,1
KBZ-R-A	235,00	215,00	-8,5
VLHO-R-A	109,00	100,00	-8,3

\*comparison is done with first price in 2005

## 2.13. Financial Ratios

(Price, earnings and dividend in Kunas)

Symbol	Price	EPS 2004	P/E	Dividend for 2004	Dividend Yield
<b>Official Market</b>					
CROS-R-A	5.299,99	325,45	16,3	128	2,4%
ISTT-R-A	180,00	17,16	10,5	5,3	2,9%
PLVA-R-A	380,00	44,68	8,5	12	3,2%
PODR-R-A	280,00	17,84	15,7	5	1,8%

### 3. Prices and Volumes for the Most Active Stocks

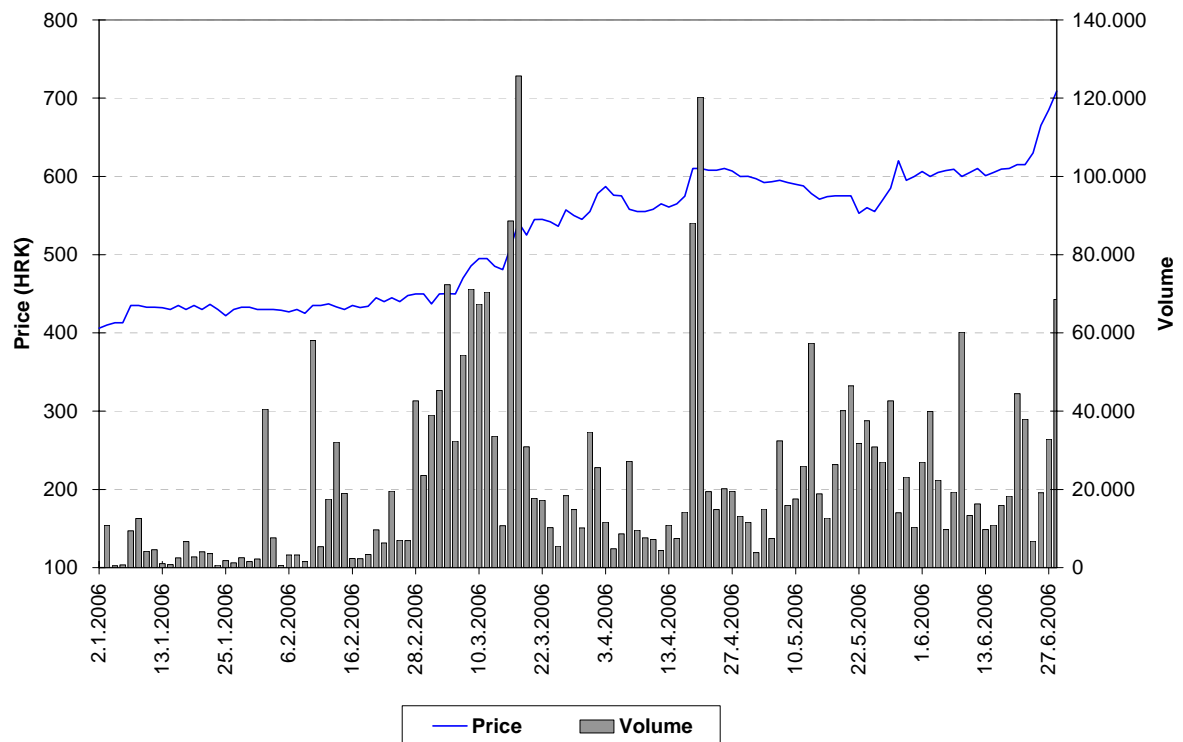


Chart 5: Pliva d.d.

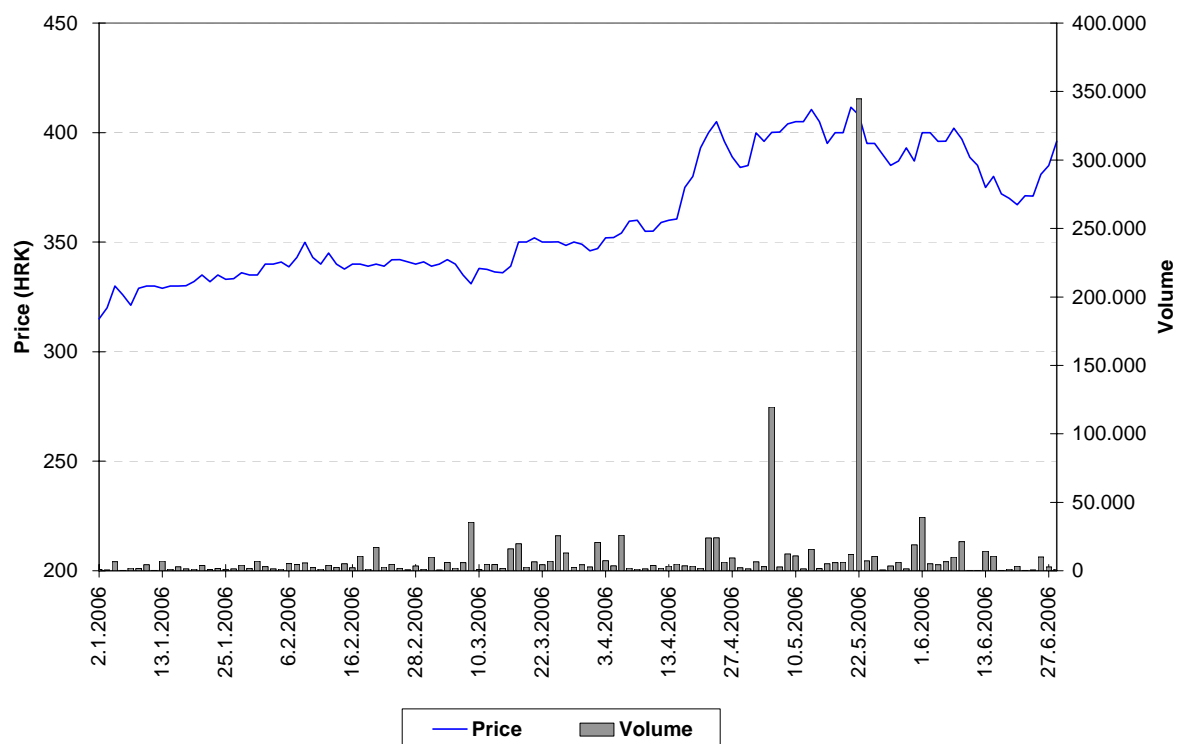


Chart 6: Podravka d.d.

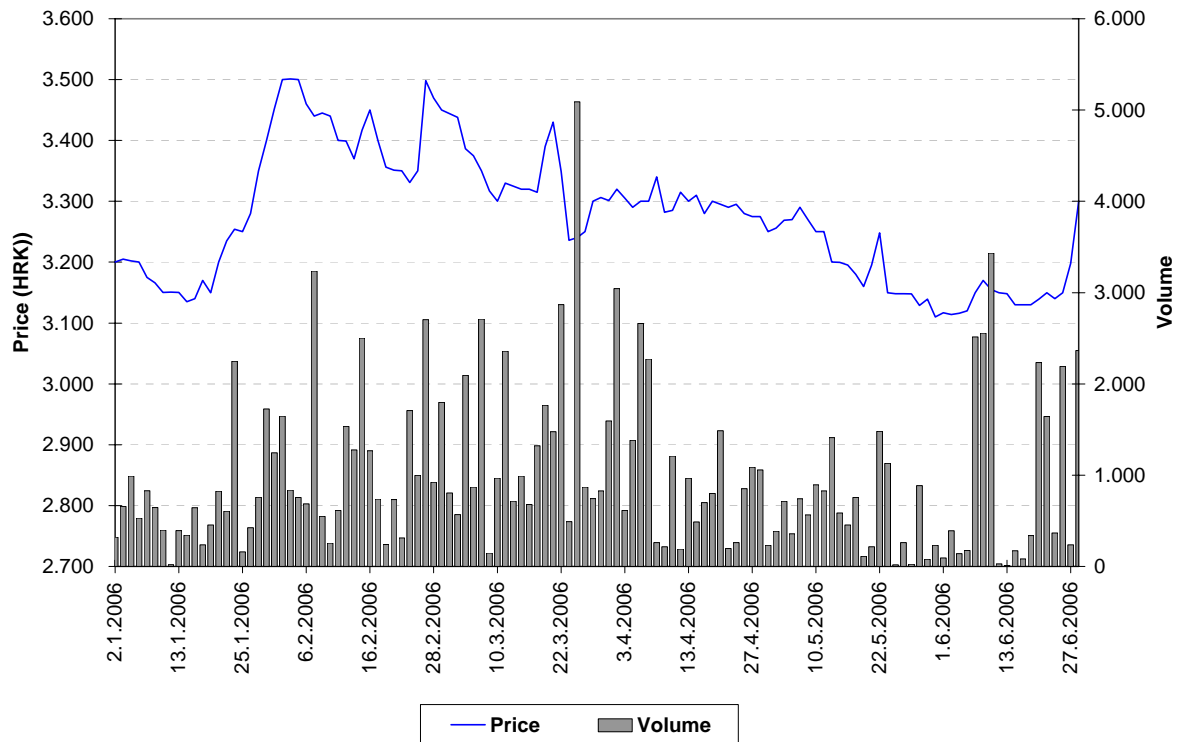


Chart 7: ADRIS GRUPA d.d. preferred stocks

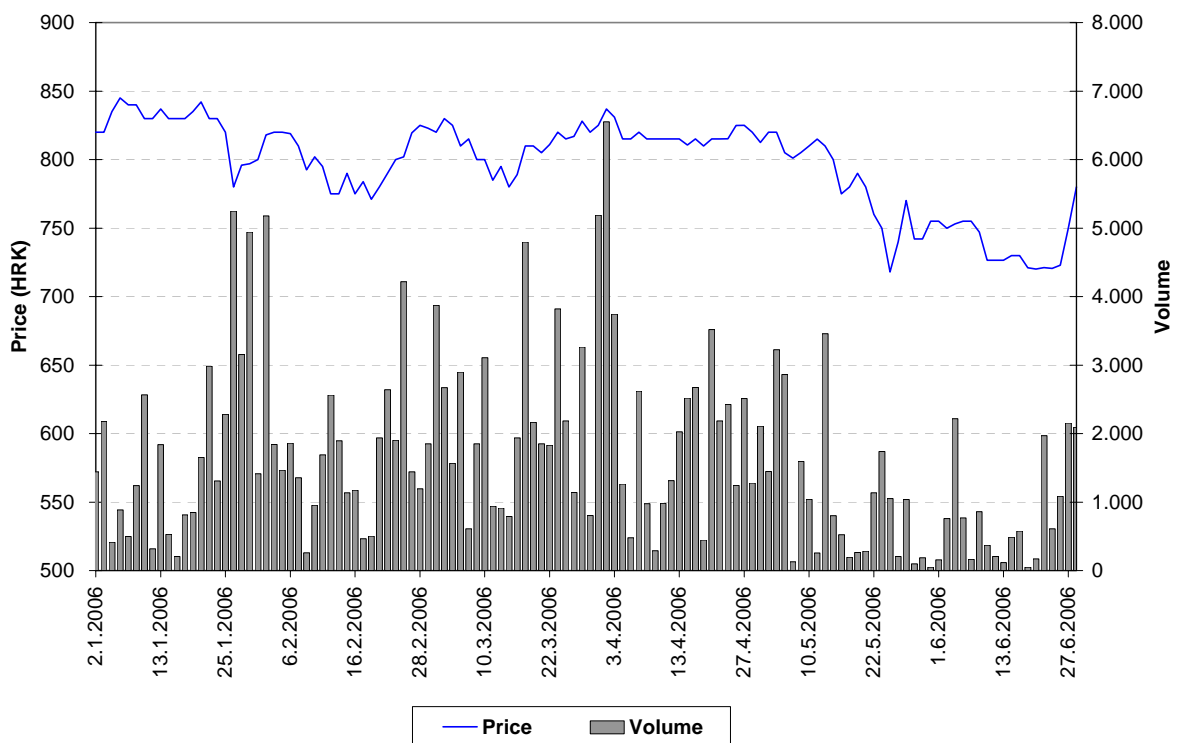


Chart 8: Atlantska plovidba d.d.



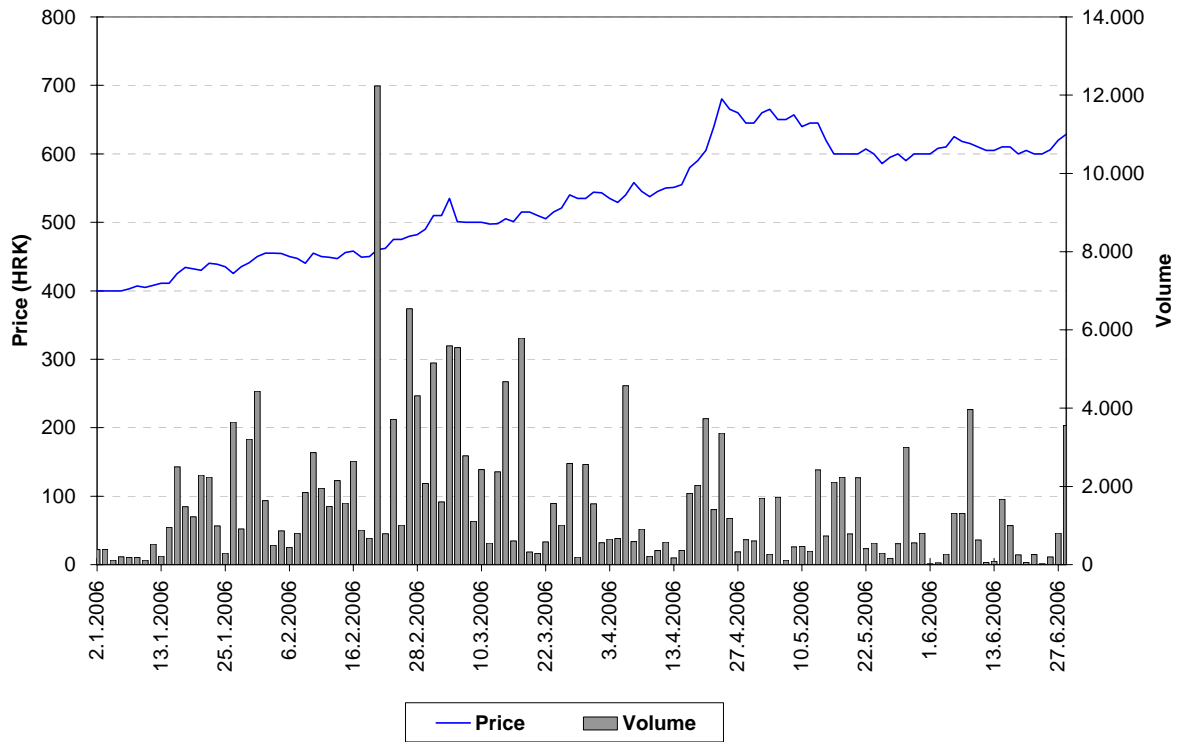


Chart 9: Dalekovod d.d.

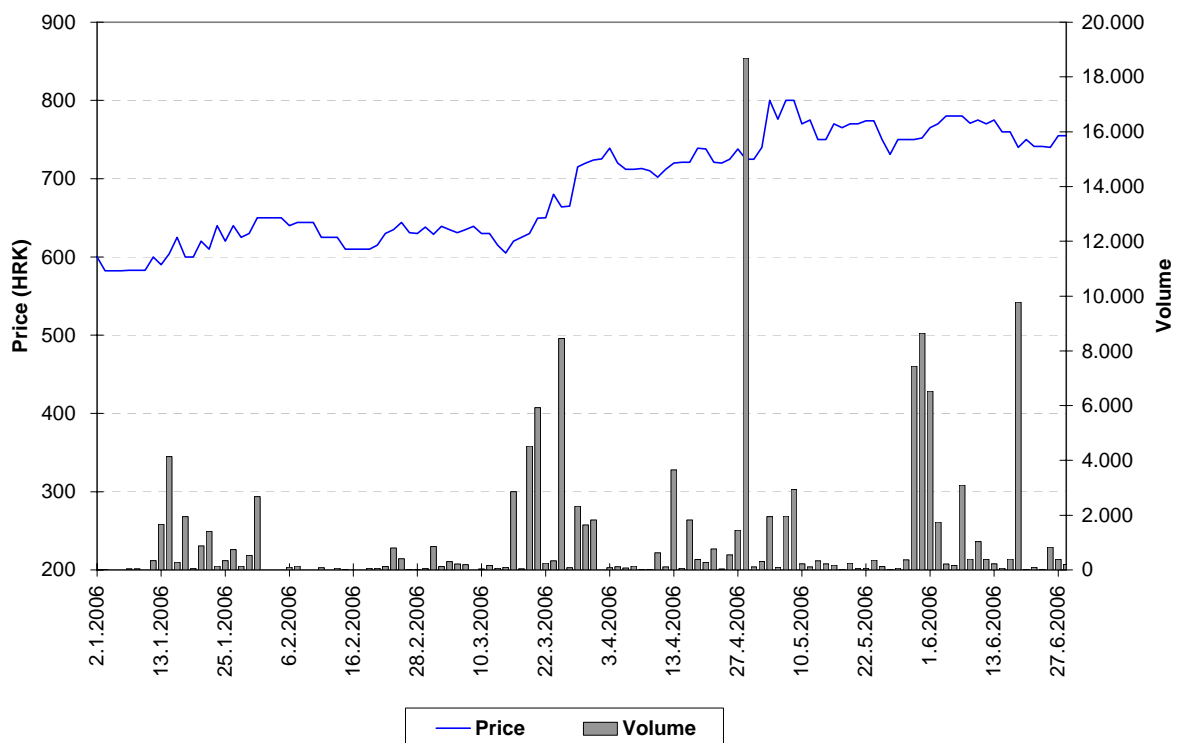


Chart 10: Privredna banka Zagreb d.d.

## 4. Listed Companies

Symbol	Company name	Shares outstanding	Nominal value
<b>Official Market</b>			
<b>Common stocks</b>			
CROS-R-A	Croatia osiguranje d.d.	307.598	1400 HRK
ISTT-R-A	Istraturist Umag d.d.	4.674.995	100 HRK
MDKA-R-A	Medika d.d.	30.194	2.000 HRK
PLVA-R-A	PLIVA d.d.	18.592.648	100 HRK
PODR-R-A	Podravka prehrambena industrija d.d.	5.420.003	300 HRK
VIRO-R-A	VIRO TVORNICA ŠEĆERA d.d.	1.386.667	100 HRK
<b>Preferred stocks</b>			
CROS-P-A	Croatia osiguranje d.d.	8.750	1400 HRK
<b>JDD Market</b>			
<b>Common stocks</b>			
ADCH-R-A	Adriachem d.d.	623.578	300 HRK
ADPL-R-A	AD Plastik d.d.	2.939.709	100 HRK
ADRS-R-A	ADRIS GRUPA d.d.	961.590	100 HRK
AMDN-R-A	Apartmani Medena d.d.	765.376	300 HRK
ARNT-R-A	Arenaturist d.d.	2.182.500	300 HRK
ATLS-R-A	Atlas turistička agencija d.d.	1.904.315	50 HRK
ATPL-R-A	Atlantska plovidba d.d.	1.362.260	300 HRK
AUHR-R-A	Auto-Hrvatska d.d.	17.885	3700 HRK
BD62-R-A	Badel 1862 d.d.	752.106	300 HRK
BDMR-R-A	Brodamerkur d.d.	99.331	1900 HRK
BLSC-R-A	Belišće d.d.	1.164.312	300 HRK
CEBA-R-A	Centar banka d.d.	284.249	400 HRK
CHBL-R-A	Chromos boje i lakovi d.d.	287.740	300 HRK
CRAL-R-A	Croatia Airlines d.d.	4.349.279	200 HRK
CRBT-R-A	Croatia Baterija d.d.	180.090	300 HRK
DALS-R-A	Dalma d.d.	1.225.790	100 DEM
DKVS-R-A	Đakovština d.d.	793.021	300 HRK
DLKV-R-A	Dalekovod	2.293.812	100 HRK
DLMC-R-A	Dalmacijacement d.d.	1.700.000	700 HRK
DMUS-R-A	Domus d.d.	428.6762	100 HRK
DRNJ-R-A	Drvenjača d.d.	223.990	300 HRK
DTR-R-A	Domaća tvornica rublja d.d.	107.850	100 DEM
ELKA-R-A	EIG d.d.	1.588.320	300 HRK
ELKP-R-A	Elektroprojekt d.d.	89.800	100 DEM
ELPR-R-A	Elektropromet d.d.	334.860	300 HRK
ERNT-R-A	Ericsson Nikola Tesla d.d.	1.331.650	100 HRK
EXCL-R-A	Excelsior d.d.	474.947	100 HRK
EXPD-R-A	Exportdrvo d.d.	159.064	400 HRK
FNVC-R-A	Finvest Corp d.d.	617.751	400 HRK
FRNK-R-A	Franck d.d.	427.170	600 HRK
GPDU-R-A	GP Dubrovnik d.d.	128.835	300 HRK
HBEL-R-A	Hotel Bellevue d.d.	43.834	300 HRK

Symbol	Company name	Shares outstanding	Nominal value
HCRC-R-A	Hoteli Croatia d.d.	1.079.040	100 HRK
HDEL-R-A	Hidroelektra niskogradnja d.d.	623.881	100 HRK
HDUZ-R-A	Hotel Dubrovnik d.d.	267.200	100 DEM
HMAM-R-A	Hoteli Makarska d.d.	1.119.470	200 HRK
HMST-R-A	Hoteli Maestral d.d.	515.720	200 HRK
HPDG-R-A	Hoteli Podgora d.d.	366.250	100 DEM
HRDH-R-A	Hrvatski Duhani d.d.	842.807	300 HRK
HTCP-R-A	Hoteli Tučepi d.d.	548.200	300 HRK
HUPZ-R-A	HUP Zagreb d.d.	513.333	400 HRK
IGH-R-A	Institut građevinarstva Hrvatske d.d.	158.580	400 HRK
IKBA-R-A	Istarska kreditna banka d.d.	57.487	1100 HRK
ILRA-R-A	Ilirija d.d.	249.386	390 HRK
INDG-R-A	Industrogradnja d.d.	125.072	2700 HRK
INGR-R-A	Ingra d.d.	40.000	1500 HRK
INKR-R-A	Inker Zaprešić d.d.	1.451.886	100 HRK
JDBA-R-A	Jadranska banka d.d.	36.400	2000 HRK
JDKM-R-A	Jadrnkamen d.d.	217.330	100 DEM
JDPL-R-A	Jadroplov d.d.	1.636.674	360 HRK
JMNC-R-A	Jamnica d.d.	22.126	3800 HRK
JNAF-R-A	Jadranski naftovod d.d.	742.846	2700 HRK
KABA-R-A	Karlovačka banka d.d.	713.996	100 HRK
KBZ-R-A	Kreditna banka Zagreb d.d.	1.319.945	100 HRK
KNZM-R-A	Konzum d.d.	126.127	1800 HRK
KODT-R-A	Končar-distributivni i specijalni transformatori d.d.	73.313	300 HRK
KOEI-R-A	Končar elektroindustrija d.d.	2.517.053	400 HRK
KOSK-R-A	Končar Sklopna postrojenja d.d.	68.842	300 HRK
KRAS-R-A	Kraš d.d.	1.373.621	400 HRK
KSST-R-A	Kaštelanski staklenici d.d.	113.593	2500 HRK
KTKS-R-A	Koteks d.d.	669.467	100 HRK
LANO-R-A	Laguna Novigrad d.d.	322.790	370 HRK
LEDO-R-A	Ledo d.d.	220.170	380 HRK
LKPC-R-A	Luka Ploče d.d.	222.614	400 HRK
LKRI-R-A	Luka Rijeka d.d.	3.011.830	100 HRK
LLRB-R-A	Lola Ribar d.d.	127.139	400 HRK
LPML-R-A	Lipa Mill d.d.	70.833	720 HRK
LRH-R-A	Liburnia Riviera hoteli d.d.	302.641	3200 HRK
LURA-R-A	Lura d.d.	3.000.000	100 HRK
LVCV-R-A	Lavčević d.d.	465.656	300 HRK
MAGE-R-A	Marin Getaldić d.d.	180.608	50 DEM
MAIS-R-A	MAISTRA d.d.	10.257.393	-
MDPL-R-A	Mediteranska plovidba d.d.	156.126	370 HRK
MLNR-R-A	Mlinar d.d.	195.409	400 HRK
MMBA-R-A	Međimurska banka d.d.	319.750	400 HRK
NVBA-R-A	Nava banka d.d.	101.610	400 HRK
PABA-R-A	Partner banka d.d.	891.000	100 HRK
PBZ-R-A	Privredna banka Zagreb d.d.	16.660.000	100 HRK
PLAG-R-A	Plava Laguna d.d.	546.318	1800 HRK
PLTO-R-A	PLUTO d.d.	87.440	400 HRK

Symbol	Company name	Shares outstanding	Nominal value
POBA-R-A	Požeška banka d.d.	320.000	200 HRK
PRHN-RA	Prehrana d.d.	129.950	300 HRK
PTKM-R-A	Petrokemija d.d.	2.471.721	400 HRK
PUNT-R-A	POUNJE Trikotaža d.d.	266.670	100 HRK
RIBA-R-A	Erste & Steiermarkische bank d.d.	13.242.478	100 HRK
RIZO-R-A	RIZ-ODAŠILJAČI d.d.	135.902	100 DEM
SDBA-R-A	BANKA SPLITSKO-DALMATINSKA d.d.	316.178	100 HRK
SLDM-R-A	Slobodna dalmacija d.d.	1.542.666	100 HRK
SLRS-R-A	Solaris d.d.	726.990	300 HRK
SMNS-R-A	Siemens d.d.	945.906	100 HRK
SSNC-R-A	Banka Sonic d.d.	61.800	500 HRK
TANG-R-A	TANG tvornica alata d.d.	145.000	500 HRK
TDZ-R-A	Tvornica duhana Zagreb d.d.	324.808	700 HRK
TEP-R-A	TEP Tvornica elektrotehničkih proizvoda d.d.	377.847	200 HRK
THNK-R-A	Tehnika d.d.	189.460	900 HRK
TISK-R-A	Tisak d.d.	2.386.587	100 HRK
TLM-R-A	TLM Tvornica lakih metala d.d.	1.840.082	300 HRK
TMPO-R-A	TEMPO d.d.	607.952	100 HRK
TNPL-R-A	Tankerska plovidba d.d.	626.385	600 HRK
TOZ-R-A	TOZ Penkala, Tvornica olovaka Zagreb d.d.	246.930	300 HRK
TRFM-R-a	TERRA FIRMA d.d.	36.000	1000 HRK
TRMD-R-A	Terra Mediterranea d.d.	230.997	100 HRK
TSTR-R-A	Tekstilstroj d.d.	114.442	300 HRK
ULPL-R-A	Uljanik plovidba d.d.	187.500	400 HRK
ULJN-R-A	ULJANIK d.d.	2.236.253	300 HRK
UNPP-R-A	Unijapapir d.d.	19.210	1800 HRK
VDKT-R-A	Viadukt d.d.	345.820	300 HRK
VJSN-R-A	Vjesnik d.d.	1.061.683	100 HRK
VPIK-R-A	VUPIK d.d.	1.422.127	400 HRK
ZABA-R-A	Zagrebačka banka d.d.	2.873.603	380 HRK
ZAPI-R-A	Zagrebačka pivovara d.d.	620.450	100 DEM
ZLJS-R-A	Željezara Split d.d.	113.216	1200 HRK
ZPKL-R-A	Zagrebačke pekarnice Klara d.d.	283.760	400 HRK
	<b>JDD Market</b>		
	<b>Preffered stocks</b>		
ADRS-P-A	ADRIS GRUPA d.d.	678.410	100 HRK
CEBA-P-A	Centar banka d.d.	62.500	400 HRK
CRAL-P-A	Croatia Airlines d.d.	17.590	100 HRK
CRAL-P-A1	Croatia Airlines d.d.	6.762	100 HRK
CRAL-P-A2	Croatia Airlines d.d.	13.025	100 HRK
CRAL-P-A3	Croatia Airlines d.d.	7.356	100 HRK
CRAL-P-A4	Croatia Airlines d.d.	6.464	100 HRK
HCRC-P-A	Hoteli Croatia d.d.	402.500	100 HRK
IKBA-P-A	Istarska kreditna banka d.d.	1.513	1100 HRK
KABA-P-A	Karlovačka banka d.d.	10.824	100 HRK
KODT-P-A	Končar-Distributivni i specijalni transformatori d	30.714	300 HRK
KOSK-P-A	Končar Sklopna postrojenja d.d.	40.718	300 HRK
PLAG-P-A	Plava Laguna d.d.	105.000	1000 HRK

Symbol	Company name	Shares outstanding	Nominal value
PUNT-P-A	POUNJE TRIKOTAŽA d.d.	60.000	100 HRK
SDBA-P-A	BANKA SPLITSKO-DALMATINSKA d.d.	86.680	100 HRK
SSNC-P-A1	Banka Sonic d.d.	18.200	500 HRK
ZABA-P-B	Zagrebačka banka d.d.	11.325	540 HRK
	<b>Parallel Market</b>		
	<b>Preffered stocks</b>		
ADHT-R-A	Adriatic d.d.	337.480	200 HRK
AGLG-R-A	AGROLAGUNA d.d.	28.487	2500 HRK
BLVD-R-A	Belvedere d.d.	349.080	300 HRK
BRNK-R-A	Brionka d.d.	132.410	100 DEM
CHAG-R-A	CHROMOS AGRO d.d.	125.977	500 HRK
CRLR-R-A	Croatia Lloyd d.d.	145.076	800 HRK
DKST-R-A	DK «STOLARIJA» d.d.	5.484	500 DEM
FRMC-R-A	Farmacija d.d.	16.835	1200 HRK
GHAD-R-A	Grand Hotel Adriatic d.d.	170.800	100 DEM
GHPA-R-A	Grand Hotel Park d.d.	139.895	400 HRK
GKBA-R-A	Gospodarsko-kreditna banka d.d.	627.720	100 HRK
HARG-R-A	Hoteli Argentina d.d.	185.960	300 HRK
HBRL-R-A	Hoteli Brela d.d.	525.270	100 DEM
HIMR-R-A	Imperial d.d.	635.855	200 DEM
HMLN-R-A	Hoteli Mlini d.d.	780.364	100 HRK
HMLN-R-A	Hoteli Mlini d.d.	780.364	100 HRK
HPB-R-A	Hrvatska poštanska banka d.d.	531.618	1.100 HRK
HPRK-R-A	Hotel Park d.d.	3.000	3000 HRK
HRBC-R-A	Rabac, ugostiteljstvo i turizam d.d.	1.012.220	100 DEM
HSRE-R-A	Hoteli Srebreno d.d.	482.000	100 HRK
HSTS-R-A	Hotel Split d.d.	36.323	3100 HRK
IKOM-R-A	IKOM Industrija komunalne opreme i mjerila d.d.	78.142	100 DEM
IMES-R-A	Imes d.d.	53.276	100 DEM
INFS-R-A	INFOSISTEM d.d.	53.557	400 HRK
IPKK-R-A	IPK KANDIT d.d.	543.490	100 HRK
IPKT-R-A	IPK TVORNICA ULJA ČEPIN d.d.	564.694	100 HRK
ISAP-R-A	Istarska autocesta d.d.	7.137	300 HRK
ISAP-R-B	Istarska autocesta d.d.	4.080	400 HRK
ISAP-R-C	Istarska autocesta d.d.	120	5000 HRK
JLSA-R-A	Jelsa d.d.	1.057.758	100 HRK
JTMN-R-A	Jadran d.d. Tvornica metalnog namještaja	173.560	300 HRK
KIM-R-A	KIM MLJEKARA KARLOVAC d.d.	104.472	300 HRK
KMKA-R-A	Kemika d.d.	95.259	300 HRK
KODS-R-A	Kordun Slunj d.d.	106.427	100 HRK
KORF-R-A	DOM HOLDING d.d.	8.113.359	100 HRK
KRDN-R-A	Kordun d.d. Karlovac	256.320	100 DEM
KRNA-R-A	Korana d.d.	200.406	200 HRK
LOVI-R-A	Lovinčić d.d.	419.506	200 HRK
MLDN-R-A	Mladina d.d.	96.098	300 HRK
MCML-R-A	MACROMEL d.d.	150.000	10000 HRK
MLDN-R-A	Mladina d.d.	96.098	300 HRK
MRNR-R-A	Mornar d.d.	52.510	100 DEM

Symbol	Company name	Shares outstanding	Nominal value
MSLK-R-A	Moslavka d.d.	191.732	200 HRK
NACE-R-A	Našicecement d.d.	644.329	400 HRK
PRFC-R-A	PROFICIO d.d.	3.912.908	100 HRK
PSBA-R-A	Primus banka d.d.	101.700	500 HRK
PZDL-R-A	Požeška dolina d.d.	120.339	100 DEM
RIVP-R-A	Riviera Holding d.d.	3.653.517	300 HRK
RTKO-R-A	Riječka tvornica konopa d.d.	130.260	200 HRK
SLBA-R-A	Slavonska banka d.d.	284.941	1300 HRK
SLPF-R-A	Slavonski ZIF, d.d.	3.346.418	100 HRK
SLPG-R-A	Solana Pag d.d.	75.846	100 DEM
SNHO-R-A	SN Holding d.d.	3.377.441	-
SPTH-R-A	Svpetrvs hoteli d.d.	395.148	100 HRK
STBA-R-A	Splitska banka d.d.	3.634.783	100 HRK
SUNH-R-A	Sunčani Hvar d.d.	5.310.971	100 HRK
TRUM-R-A	Trgopromet Umag d.d.	214.072	100 HRK
VDMV-R-A	Vodomaterijal d.d.	41.084	100 HRK
VLBT-R-A	Velebit – ZIF, d.d.	3.406.550	100 HRK
VLHO-R-A	VALAMAR GRUPA d.d.	3.377.441	-
ZITP-R-A	Žitoproizvod d.d.	109.300	400 HRK
ZLAR-R-A	Zlatni rat d.d.	552.319	100 DEM
ZVZD-R-A	ZVIJEZDA d.d.	100.257	2000 HRK
<b>Parallel Market</b>			
<b>Preffered stocks</b>			
GKBA-P-A	Gospodarsko-kreditna banka d.d.	220.000	100 HRK
SPTH-P-A	Svpetrvs hoteli d.d.	45.952	100 HRK

## 5. Listed Bonds

Symbol	Issuer	Nominal value	Issued volume	Interest	Maturity
<b>Official Market</b>					
AGKR-O-074A	AGROKOR d.d.	1 EUR	230.000.000	11,000%	3.4.2007
ATGR-O-074A	ATLANTIC GRUPA d.o.o.	1 EUR	15.000.000	5,750%	13.7.2007
BLSC-O-091	Belišće d.d.	1 EUR	8.000.000	5,500%	14.1.2009
BNAI-O-22CA	Bina Istra d.d.	1 EUR	210.000.000	8,000%	15.12.2022
FNOI-D-071A	Fund for the Restitution of Deprived Property	5,11 EUR	666.929	\	1.1.2007
FNOI-D-077A	Fund for the Restitution of Deprived Property	5,11 EUR	666.929	\	1.7.2007
FNOI-D-081A	Fund for the Restitution of Deprived Property	5,11 EUR	666.929	\	1.1.2008
FNOI-D-087A	Fund for the Restitution of Deprived Property	5,11 EUR	666.929	\	1.7.2008
FNOI-D-091A	Fund for the Restitution of Deprived Property	5,11 EUR	666.929	\	1.1.2009
FNOI-D-097A	Fund for the Restitution of Deprived Property	5,11 EUR	666.929	\	1.7.2009
FNOI-D-101A	Fund for the Restitution of Deprived Property	5,11 EUR	666.929	\	1.1.2010
FNOI-D-107A	Fund for the Restitution of Deprived Property	5,11 EUR	666.929	\	1.7.2010
FNOI-D-111A	Fund for the Restitution of Deprived Property	5,11 EUR	666.929	\	1.1.2011

Symbol	Issuer	Nominal value	Issued volume	Interest	Maturity
FNOI-D-117A	Fund for the Restitution of Deprived Property	5,11 EUR	666.929	\	1.7.2011
FNOI-D-121A	Fund for the Restitution of Deprived Property	5,11 EUR	666.929	\	1.1.2012
FNOI-D-127A	Fund for the Restitution of Deprived Property	5,11 EUR	666.929	\	1.7.2012
FNOI-D-131A	Fund for the Restitution of Deprived Property	5,11 EUR	666.929	\	1.1.2013
FNOI-D-137A	Fund for the Restitution of Deprived Property	5,11 EUR	666.929	\	1.7.2013
FNOI-D-141A	Fund for the Restitution of Deprived Property	5,11 EUR	666.929	\	1.1.2014
FNOI-D-147A	Fund for the Restitution of Deprived Property	5,11 EUR	666.929	\	1.7.2014
FNOI-D-151A	Fund for the Restitution of Deprived Property	5,11 EUR	666.929	\	1.1.2015
FNOI-D-157A	Fund for the Restitution of Deprived Property	5,11 EUR	666.929	\	1.7.2015
FNOI-D-161A	Fund for the Restitution of Deprived Property	5,11 EUR	666.929	\	1.1.2016
FNOI-D-167A	Fund for the Restitution of Deprived Property	5,11 EUR	666.929	\	1.7.2016
FNOI-D-171A	Fund for the Restitution of Deprived Property	5,11 EUR	666.929	\	1.1.2017
FNOI-D-177A	Fund for the Restitution of Deprived Property	5,11 EUR	666.929	\	1.7.2017
FNOI-D-181A	Fund for the Restitution of Deprived Property	5,11 EUR	666.929	\	1.1.2018
FNOI-D-187A	Fund for the Restitution of Deprived Property	5,11 EUR	666.929	\	1.7.2018
FNOI-D-191A	Fund for the Restitution of Deprived Property	5,11 EUR	666.929	\	1.1.2019
FNOI-D-197A	Fund for the Restitution of Deprived Property	5,11 EUR	666.929	\	1.7.2019
GDKC-O-116A	City of Koprivnica	1 HRK	60.000.000	6,500%	29.6.2011
GDZD-O-119A	City of Zadar	1 EUR	18.500.00	5,500%	1.9.2011
HBOR-O-112A	Croatian bank for reconstruction and development	1 EUR	300.000.000	4,875%	11.2.2011
HYBA-O-086A	Hypo Alpe-Adria Bank d.d.	1 HRK	150.000.000	6,500%	6.6.2008
NEXE-O-116A	NEXE GRUPA d.d.	1 HRK	750.000.000	5,500%	14.6.2011
PLVA-O-115A	PLIVA d.d.	1 EUR	75.000.000	5,750%	12.5.2011
PODR-O-072A	Podravka d.d.	1 EUR	160.903	5,000%	20.2.2007
PODR-O-115A	Podravka d.d.	1 HRK	375.000.000	5,125%	17.5.2011
RBA-O-112A	Raiffeisenbank Austria d.d.	1 HRK	600.000.000	4,125%	13.2.2011
RHMF-O-077A	Republic of Croatia	1 EUR	400.000.000	3,875%	7.7.2007
RHMF-O-085A	Republic of Croatia	1 HRK	1.000.000.000	6,125%	28.5.2008
RHMF-O-08CA	Republic of Croatia	1 EUR	200.000.000	6,875%	14.12.2008
RHMF-O-103A	Republic of Croatia	1 HRK	3.000.000.000	6,750%	8.3.2010
RHMF-O-125A	Republic of Croatia	1 EUR	500.000.000	6,875%	23.5.2012
RHMF-O-142A	Republic of Croatia	1 EUR	650.000.000	5,500%	10.2.2014
RHMF-O-157A	Republic of Croatia	1 EUR	350.000.000	4,250%	14.7.2015
RHMF-O-15CA	Republic of Croatia	1 HRK	5.500.000.000	5,250%	15.12.2015
RHMF-O-19BA	Republic of Croatia	1 EUR	200.000.000	5,375%	29.11.2019

## 6. Listed Certificates

Symbol	Issuer	Nominal value	Issued volume
<b>RHMJ-A-A</b>	Republic of Croatia, Ministry of Construction	1 HRK	400.000.000
<b>RHMF-A-A</b>	Republic of Croatia, Ministry of Finance	1 HRK	644.750.000

## 7. Listed Commercial Papers

Symbol	Issuer	Nominal value	Issued volume
Official Market			
BLSC-M-715A	Belišće d.d.	1 HRK	10.000.000
ISTT-M-650A	Istraturist Umag d.d.	1 HRK	70.000.000
MDKA-M-645A	Medika d.d.	1 HRK	40.000.000
Regular Market			
ATPL-M-713A	Atlantska plovidba d.d.	1 HRK	40.000.000
DLKV-M-704A	Dalekovod d.d.	1 HRK	75.000.000
INGR-M-647A	Ingra d.d.	1 HRK	25.000.000
INGR-M-710A	Ingra d.d.	1 HRK	30.000.000
JDRA-M-628A	Jadranka d.d.	1 HRK	10.000.000
JDRA-M-638A	Jadranka d.d.	1 HRK	7.500.000
LURA-M-637A	Lura d.d.	1 HRK	45.000.000
LURA-M-645A	Lura d.d.	1 HRK	22.000.000
MGMA-M-707A	Magma	1 HRK	30.000.000
MSAN-M-718A	M SAN grupa d.o.o.	1 HRK	45.000.000
OPHR-M-702	Oktal Pharma d.o.o.	1 HRK	50.000.000
PBZC-M-716A	PBZ CARD d.o.o.	1 HRK	85.000.000

## 8. Methodological Remarks

- 1) High is the highest trading price for a share in the selected period of time.
- 2) Low is the lowest trading price for a share in the selected period of time.
- 3) Last is the price of the last trade for a share in the selected period of time.
- 4) Market capitalization of the whole Exchange is calculated by multiplying the last price and the number of outstanding shares. If the share was not traded in the last month, one half of the market capitalization is added to the market capitalization of the whole Exchange. If the share was not traded in the last three months, only one fourth of the market capitalisation is added to the market capitalization of the whole Exchange.
- 5) The performance of shares is calculated with the last prices in the compared periods.
- 6) For the price curve daily closing prices are used.