

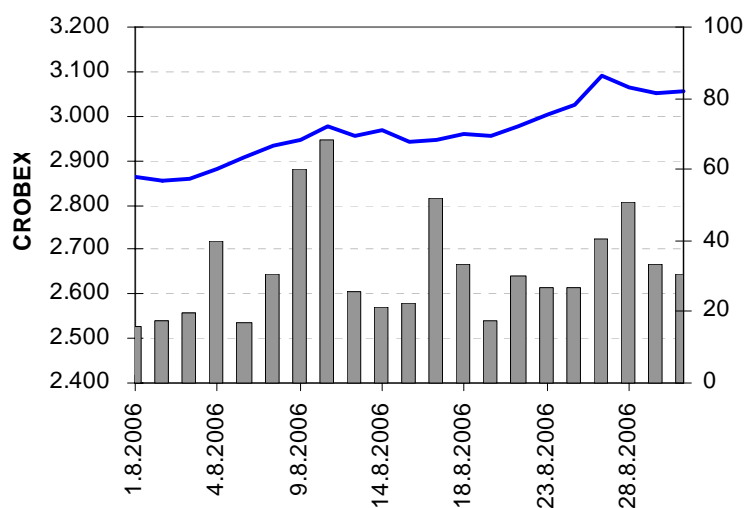


ZAGREBAČKA BURZA
THE ZAGREB STOCK EXCHANGE

Monthly Report August 2006

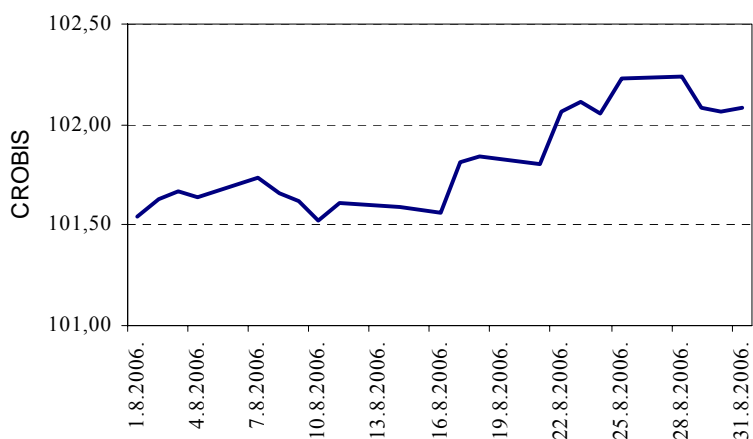
(turnover in HRK, and market capitalization in millions of HRK)

	July	August	% change
Turnover :			
Stocks	603.393.609	719.424.561	19,2
Bonds	14.008.272	33.641.326	140,2
Certificates	750.000	5.067.609	575,7
Reported turnover	128.919.542	302.658.671	134,8
Institutional turnover	1.676.055.591	2.439.525.721	45,6
Total turnover	2.423.613.214	3.500.317.889	44,4
Volume :			
Stocks	944.693	1.365.952	44,6
Bonds	10.663.199	19.547.688	83,3
Certificates	1.000.000	6.858.771	585,9
Reported volume	87.500.000	192.900.000	120,5
Institutional volume	1.184.820.150	1.529.571.000	29,1
Total volume	1.285.428.042	1.750.243.411	36,2
CROBEX	2.871,60	3.099,50	7,9
CROBIS	101,5081	102,0854	0,6
Number of trades	10.338	13.389	29,5
Number of securities traded	104	103	-1,0
Market capitalization			
Stocks	115.360,7	127.165,4	10,2
Bonds	37.320,0	37.842,4	1,4
Total	152.680,7	165.007,7	8,1
Number of trading days	21	22	4,8
Average daily :			
Turnover	115.410.153	159.105.359	37,9
Volume	61.210.859	79.556.519	30,0
Number of trades	492	609	23,6



Zagreb Stock Exchange stock price index CROBEX and stocks turnover

Zagreb Stock Exchange bond index CROBIS



Most active stocks by turnover

	Symbol	Turnover (HRK)	Pct. of total turnover	Cumulative percentage
1	ADRS-P-A	85.690.473	11,9	11,9
2	PLVA-R-A	83.441.526	11,6	23,5
3	ATPL-R-A	36.082.222	5,0	28,5
4	PODR-R-A	35.212.170	4,9	33,4
5	KOEI-R-A	33.698.070	4,7	38,1
6	PTKM-R-A	32.173.835	4,5	42,6
7	CEBA-P-A	28.932.425	4,0	46,6
8	PBZ-R-A	28.903.783	4,0	50,6
9	HRBC-R-A	28.815.995	4,0	54,6
10	DLKV-R-A	25.386.232	3,5	58,1
	Others	301.087.831	41,9	100,0
	Total	719.424.561		

Equity Trading Summary

(prices and turnover are in HRK, and market capitalization is in millions of HRK)

	High	Low	Close	Date of last trade	Net change %	Volume	Turnover	Market capitalization
Official Market								
CROS-P-A	8.750,00	7.000,00	8.750,00	29.8.2006	19,9	47	373.850	76,6
CROS-R-A	8.999,00	7.300,00	8.977,00	30.8.2006	23,0	818	6.779.793	2.761,3
ISTT-R-A	375,00	341,01	361,50	31.8.2006	1,8	17.962	6.600.375	1.690,0
MDKA-R-A	12.000,00	11.500,00	11.503,00	28.8.2006	0,0	37	426.806	347,3
PLVA-R-A	824,00	775,00	824,00	31.8.2006	1,0	105.082	83.441.526	15.320,3
PODR-R-A	408,00	390,00	400,10	31.8.2006	2,1	88.470	35.212.170	2.168,5
VIRO-R-A	655,00	582,01	650,00	31.8.2006	8,3	33.064	20.112.343	901,3
Market JDD								
ADPL-R-A	156,00	140,00	156,00	30.8.2006	11,4	3.664	539.873	458,6
ADRS-P-A	3.950,00	3.700,00	3.831,00	31.8.2006	-1,0	22.528	85.690.473	2.599,0
ARNT-R-A	360,00	335,00	345,13	31.8.2006	0,0	26.883	9.390.427	753,2
ATLS-R-A	135,00	115,15	135,00	31.8.2006	8,7	26.442	3.272.739	257,1
ATPL-R-A	920,00	870,00	900,04	31.8.2006	2,0	40.048	36.082.222	1.226,1
AUHR-R-A	47.000,00	43.000,00	46.497,00	31.8.2006	10,7	70	3.178.474	831,6
BD62-R-A	440,00	421,00	430,00	31.8.2006	-0,9	10.201	4.396.099	323,4
BDMR-R-A	3.150,00	2.800,00	3.150,00	30.8.2006	26,0	153	447.718	312,9
BLSC-R-A	606,00	580,00	590,00	31.8.2006	0,3	5.779	3.435.241	686,9
CEBA-P-A	975,00	738,50	860,00	31.8.2006	17,8	31.767	28.932.425	53,8
CEBA-R-A	1.300,00	1.100,00	1.200,00	31.8.2006	9,1	1.910	2.346.132	341,1
CRBT-R-A	349,99	280,00	349,99	24.8.2006	25,0	737	232.465	63,0
DLKV-R-A	850,00	690,00	806,00	31.8.2006	16,8	33.844	25.386.232	1.848,8
ELKA-R-A	117,00	109,00	111,49	31.8.2006	0,9	3.878	432.247	171,3
ELPR-R-A	302,51	265,00	274,00	31.8.2006	-5,5	9.441	2.713.505	91,8
ERNT-R-A	2.145,00	2.105,00	2.145,00	22.8.2006	7,2	388	820.740	2.856,4
EXCL-R-A	346,00	211,01	249,00	28.8.2006	23,9	181	46.587	118,3
FNVC-R-A	514,00	465,03	500,00	31.8.2006	4,2	7.997	3.957.303	308,9
FRNK-R-A	2.350,00	2.160,00	2.300,00	31.8.2006	3,1	1.102	2.468.324	982,5
HDEL-R-A	650,00	400,01	630,00	31.8.2006	57,5	6.184	3.450.110	393,0
HDUZ-R-A	1.000,00	1.000,00	1.000,00	24.8.2006	0,0	1	1.000	267,2
HRDH-R-A	247,93	204,03	230,00	30.8.2006	13,3	3.623	817.592	193,8
HUPZ-R-A	2.015,00	1.881,00	1.950,00	31.8.2006	-2,5	3.735	7.453.535	1.001,0
IGH-R-A	4.100,00	3.700,00	4.020,00	31.8.2006	5,8	5.384	21.166.270	637,5
ILRA-R-A	500,00	500,00	500,00	9.8.2006	0,0	30	15.000	124,7
JAKT-R-A	101,00	95,00	98,99	31.8.2006	-2,0	5.658	562.592	78,3
JDBA-R-A	12.469,00	10.704,01	11.350,00	31.8.2006	-0,6	259	3.008.609	413,1
JDKM-R-A	350,00	300,00	300,00	29.8.2006	0,0	316	99.417	65,2
JDPL-R-A	268,00	230,00	261,00	31.8.2006	13,5	41.399	10.616.826	427,2
JMNC-R-A	64.999,99	60.000,00	64.999,99	31.8.2006	8,3	54	3.374.189	1.438,2
JNAF-R-A	3.200,00	2.800,00	3.050,02	31.8.2006	8,5	1.557	4.487.575	2.265,7
KABA-P-A	282,00	100,00	282,00	11.8.2006	88,0	132	34.064	3,1
KABA-R-A	430,00	313,99	346,00	31.8.2006	15,3	12.158	4.443.267	247,0
KBZ-R-A	365,00	265,00	330,00	31.8.2006	26,9	18.972	5.886.981	435,6
KNZM-R-A	39.000,00	30.000,00	39.000,00	31.8.2006	21,9	62	2.068.170	4.919,0
KODT-P-A	1.389,00	1.300,00	1.389,00	11.8.2006	15,7	66	91.121	42,7
KOEI-R-A	559,00	400,00	552,02	31.8.2006	28,1	76.137	33.698.070	1.389,5
KRAS-R-A	660,02	610,05	635,03	31.8.2006	-3,8	2.285	1.455.806	872,3
LKPC-R-A	1.860,00	1.720,00	1.772,00	31.8.2006	2,1	6.826	12.262.943	394,5
LLRB-R-A	315,00	285,21	300,00	30.8.2006	-4,8	1.790	539.403	38,1
LPML-R-A	660,00	628,99	629,00	31.8.2006	-3,2	355	226.136	44,6
LURA-R-A	484,84	440,00	451,00	28.8.2006	0,2	30.617	13.811.625	1.353,0
MLNR-R-A	800,00	605,00	750,01	31.8.2006	11,9	6.641	4.856.011	146,6
MMBA-R-A	2.100,00	1.700,00	2.080,00	28.8.2006	22,4	303	580.375	665,1
PBZ-R-A	1.040,00	810,20	1.000,00	31.8.2006	23,4	30.407	28.903.783	16.660,0

	High	Low	Close	Date of last trade	Net change %	Volume	Turnover	Market capitalization
PLAG-R-A	4.400,00	3.615,03	4.035,00	30.8.2006	6,2	937	3.799.096	2.204,4
PTKM-R-A	191,88	137,20	187,00	31.8.2006	30,8	195.539	32.173.835	462,2
PUNT-R-A	52,00	33,50	51,94	31.8.2006	48,4	86.162	3.761.879	13,9
RIBA-R-A	540,00	490,00	525,00	31.8.2006	4,6	31.022	16.113.469	6.952,3
RIZO-R-A	250,00	250,00	250,00	14.8.2006	28,2	75	18.750	34,0
SDBA-R-A	279,97	210,00	279,95	31.8.2006	33,3	4.005	944.424	88,5
SLDM-R-A	160,00	120,50	142,85	31.8.2006	9,9	134.971	19.109.978	220,4
SMNS-R-A	1.500,00	1.500,00	1.500,00	4.8.2006	0,0	30	45.000	1.418,9
TDZ-R-A	2.000,00	1.803,00	2.000,00	28.8.2006	11,1	32	59.412	649,6
THNK-R-A	4.700,00	3.950,00	4.600,00	31.8.2006	17,8	4.716	21.276.799	871,5
TISK-R-A	410,00	400,00	409,00	30.8.2006	0,0	2.529	1.018.824	976,1
TNPL-R-A	3.449,00	3.200,00	3.400,00	31.8.2006	4,1	5.005	16.468.929	2.129,7
TOZ-R-A	430,00	228,00	370,00	31.8.2006	62,3	11.459	3.779.631	91,4
TRFM-R-A	1.118,99	950,02	1.020,00	31.8.2006	2,5	1.773	1.796.793	36,7
TRMD-R-A	100,00	100,00	100,00	9.8.2006	0,0	50	5.000	23,1
ULPL-R-A	2.840,00	2.561,00	2.820,00	31.8.2006	6,2	1.213	3.300.301	528,8
ULJN-R-A	270,00	146,00	270,00	31.8.2006	91,5	8.376	1.684.865	603,8
VPIK-R-A	290,00	235,00	260,07	31.8.2006	8,4	11.872	3.131.197	369,9
ZABA-P-B	5.300,00	4.310,00	5.300,00	30.8.2006	16,5	26	125.053	60,0
ZABA-R-A	7.800,01	6.500,00	7.600,00	31.8.2006	16,9	1.542	11.076.202	21.839,4
ZAPI-R-A	3.850,00	3.700,00	3.800,00	31.8.2006	0,0	517	1.962.366	2.357,7

Parallel Market

BRNK-R-A	225,00	220,00	225,00	30.8.2006	0,0	145	32.185	29,8
HRBC-R-A	355,00	335,00	355,00	23.8.2006	6,0	85.717	28.815.995	359,3
IPKT-R-A	148,00	148,00	148,00	28.8.2006	14,3	75	11.100	83,6
KMKA-R-A	650,00	450,00	450,00	29.8.2006	45,2	180	85.700	42,9
KODS-R-A	35,00	21,20	35,00	8.8.2006	9,4	456	10.789	3,7
MLDN-R-A	300,00	290,00	290,00	31.8.2006	-3,3	195	58.300	27,9
PRFC-R-A	70,98	70,98	70,98	3.8.2006	0,0	100	7.098	277,7
RIVP-R-A	549,00	435,00	525,00	31.8.2006	16,7	19.936	9.646.124	1.918,1
STBA-R-A	1.100,00	1.100,00	1.100,00	23.8.2006	-15,4	200	220.000	5.008,1
SUNH-R-A	256,00	228,30	245,00	31.8.2006	-2,0	21.852	5.258.577	1.301,2
VDMV-R-A	129,00	126,01	126,04	30.8.2006	0,8	433	54.904	5,2
ZLAR-R-A	410,00	385,01	404,47	31.8.2006	2,4	7.368	2.945.429	223,4

Bonds Trading Summary

(prices are % of par value, and turnover is in HRK)

	High	Low	Close	Date of last trade	Volume	Turnover
Regular trades						
MTEL-O-097A	102,70	102,70	102,70	10.8.2006	1.000.000	1.027.000
PLVA-O-115A	103,50	103,35	103,50	30.8.2006	176.000	1.328.709
RHMF-O-077A	99,50	99,40	99,40	11.8.2006	23.143	167.304
RHMF-O-085A	103,40	102,85	103,05	30.8.2006	421.853	435.869
RHMF-O-08CA	105,25	105,25	105,25	8.8.2006	814.250	6.215.049
RHMF-O-103A	107,55	107,50	107,50	10.8.2006	240.000	258.023
RHMF-O-125A	112,45	111,50	112,45	31.8.2006	375.300	3.047.193
RHMF-O-137A	99,23	98,90	99,23	23.8.2006	15.750.000	15.626.250
RHMF-O-142A	106,50	105,95	106,50	24.8.2006	214.000	1.648.980
RHMF-O-157A	98,60	97,20	98,60	24.8.2006	201.000	1.444.133
RHMF-O-15CA	104,50	104,50	104,50	23.8.2006	32.142	33.588
RHMF-O-19BA	110,20	110,20	110,20	24.8.2006	300.000	2.409.229
Total					19.547.688	33.641.326

	High	Low	Close	Date of last trade	Volume	Turnover
Reported trades						
RHMF-O-085A	103,10	103,10	103,10	9.8.2006	5.000.000	5.155.000
RHMF-O-08CA	105,70	105,48	105,70	7.8.2006	5.000.000	38.285.907
RHMF-O-103A	107,52	107,35	107,52	29.8.2006	35.000.000	37.606.000
RHMF-O-125A	112,50	111,70	112,50	29.8.2006	5.000.000	40.654.738
RHMF-O-137A	99,35	99,00	99,00	23.8.2006	25.000.000	24.795.000
RHMF-O-142A	106,90	106,45	106,90	29.8.2006	1.900.000	14.786.895
RHMF-O-157A	98,85	98,85	98,85	29.8.2006	1.000.000	7.217.576
RHMF-O-15CA	104,90	104,30	104,90	30.8.2006	113.000.000	118.054.000
RHMF-O-19BA	110,45	110,10	110,10	29.8.2006	2.000.000	16.103.555
Total					192.900.000	302.658.671
Institutional trades						
ATGR-O-077A	101,10	101,10	101,10	16.8.2006	110.000	808.300
GDZD-O-119A	103,30	103,30	103,30	2.8.2006	1.000.000	7.491.191
NEXE-O-116A	100,15	99,45	100,15	25.8.2006	65.740.000	65.586.610
PLVA-O-115A	103,35	103,25	103,25	8.8.2006	590.000	4.426.552
PODR-O-115A	99,20	99,20	99,20	11.8.2006	3.000.000	2.976.000
RBA-O-112A	98,05	97,30	97,65	29.8.2006	49.765.000	48.685.023
RHMF-O-077A	99,90	99,32	99,75	30.8.2006	13.820.000	100.143.105
RHMF-O-085A	103,40	102,95	102,95	28.8.2006	170.870.000	175.995.274
RHMF-O-08CA	105,70	104,80	105,50	23.8.2006	14.660.000	112.149.803
RHMF-O-103A	107,61	106,90	107,61	31.8.2006	332.190.000	356.763.320
RHMF-O-125A	112,65	111,20	112,40	30.8.2006	27.730.000	225.839.741
RHMF-O-137A	99,45	98,80	99,45	30.8.2006	200.785.000	199.339.395
RHMF-O-142A	107,27	105,45	106,95	31.8.2006	23.348.500	181.223.673
RHMF-O-157A	99,00	97,55	99,00	31.8.2006	17.712.500	127.331.504
RHMF-O-15CA	104,95	104,25	104,95	31.8.2006	580.150.000	606.406.325
RHMF-O-19BA	110,70	108,20	109,90	31.8.2006	28.100.000	224.359.905
Total					1.529.571.000	2.439.525.721
BONDS TOTAL					1.742.018.688	2.775.825.719

Certificates Trading Summary

(prices are % of par value, and turnover is in HRK)

High	Low	Close	Date of last trade	Volume	Turnover
------	-----	-------	--------------------	--------	----------

Commercial papers

Open-end funds

(value on 31st August, 2006)

Symbol	Sell/exit price	Buy/entry price	Name
FOIN-U-ORBF	1,6		- Orbis
FOIN-U-VICF	6,1		- Victoria
PBZI-U-EURN	104,89		- PBZ Euro novčani fond
PBZI-U-GLBF	140,97		- PBZ Global fond
PBZI-U-HRKN	107,53		- PBZ Kunski novčani fond
PBZI-U-IBNF	108,16*		- PBZ Bond fond
PBZI-U-NVCF	107,71		- PBZ Novčani fond
RBAI-U-RBAC	131,13*		- *Raiffeisen Active
RBAI-U-RBAL	220,22*		- *Raiffeisen Balanced
RBAI-U-RBON	140,04		- Raiffeisen Bonds
RBAI-U-RCAF	116,51		- Raiffeisen CASH
RBAI-U-RCEU	154,31		- Raiffeisen Central Europe

* additionaly comissions apply

Top 10 Members by Equity Turnover

Rank	Member
1	Auctor d.o.o.
2	Fima vrijednosnice d.o.o.
3	InterFinance d.o.o.
4	Zagrebačka banka d.d.
5	Erste vrijednosni papiri d.o.o.
6	Raiffeisenbank Austria d.d.
7	Hypo Alpe-Adria-Bank d.d.
8	Interkapital vrijednosni papiri d.o.o.
9	I.C.F. d.o.o.
10	Privredna banka Zagreb d.d.

Top 10 Members by Bond Turnover

Rank	Member
1	Interkapital vrijednosni papiri d.o.o.
2	I.C.F. d.o.o.
3	InterFinance d.o.o.
4	Raiffeisenbank Austria d.d.
5	Erste vrijednosni papiri d.o.o.
6	Fintrade d.o.o.
7	Hrvatska poštanska banka d.d.
8	Zagrebačka banka d.d.
9	Hypo Alpe-Adria-Bank d.d.
10	Fima vrijednosnice d.o.o.

Top 10 Members by Total Turnover

Rank	Member
1	Interkapital vrijednosni papiri d.o.o.
2	I.C.F. d.o.o.
3	Auctor d.o.o.
4	Fima vrijednosnice d.o.o.
5	InterFinance d.o.o.
6	Raiffeisenbank Austria d.d.
7	Erste vrijednosni papiri d.o.o.
8	Zagrebačka banka d.d.
9	Hypo Alpe-Adria-Bank d.d.
10	Privredna banka Zagreb d.d.