



ZAGREBAČKA BURZA
THE ZAGREB STOCK EXCHANGE

Trading Summary
Third quarter of 2005

Zagreb, October 2005

The Zagreb Stock Exchange information

1. INTERNET

<http://www.zse.hr/>

2. REUTERS

ZAGSTOCK, ZAGSTOCL - daily shares prices

ZAGSTOCLM - daily bonds prices

SEZI – daily certificates prices

.CRBEX - CROBEX index

.CRBEX (chain) - CROBEX index constituents-by RIC code

This report or any part thereof may be reprinted, copied or redistributed in any way only with prior written permission and full credit.

The information contained herein is compiled and collected with care, but total accuracy and/or completeness is not guaranteed by the Zagreb Stock Exchange (ZSE). This publication is issued with the express condition to which everyone purchasing and making use thereof assents that no liability shall be incurred by ZSE. This publication is issued for information purposes only and is not to be construed in any way as an invitation to purchase or sell any security mentioned herein. ZSE recommends to any potential investor to seek professional advice before investing.

Copyright © 2005 by The Zagreb Stock Exchange
Zagreb
Ksaver 200
Croatia

All rights reserved.

Contents:

- 1. TRADING STATISTICS 1**
 - 1.1. GENERAL CHARACTERISTICS 1
 - 1.2. TRADING OVERVIEW BY MONTH..... 2
 - 1.3. SHARES PERFORMANCE 4
 - 1.4. BONDS PERFORMANCE 6
 - 1.5. STOCKS WITH THE LARGEST MARKET CAPITALIZATION 9
 - 1.6. MOST ACTIVE STOCKS BY TURNOVER..... 9
 - 1.7. BEST PERFORMING STOCKS..... 10
 - 1.8. UNDERPERFORMING STOCKS 10
 - 1.9. FINANCIAL RATIOS 10
 - 1.10. TOP 10 MEMBERS BY EQUITY TURNOVER..... 11
 - 1.11. TOP 10 MEMBERS BY BONDS TURNOVER 11
- 2. MAJOR EVENTS 12**
- 3. PRICES AND VOLUMES FOR THE MOST ACTIVE STOCKS..... 13**
- 4. LISTED SHARES 16**
- 5. LISTED BONDS 20**
- 6. LISTED CERTIFICATES..... 21**
- 7. LISTED COMMERCIAL PAPERS 21**
- 8. METHODOLOGICAL REMARKS 22**

1. Trading statistics

1.1. General characteristics

(Turnover and Market Capitalization in millions of Kunas)

	Third quarter of 2005	Second quarter of 2005	% change
Regular turnover:			
Equities	824.732.578	927.228.316	12,4
Bonds	71.579.116	131.629.152	83,9
Certificates	675.751	696.268	3,0
Reported turnover*	685.179.780	1.207.549.297	76,2
Institutional turnover**	4.680.334.341	7.212.000.811	54,1
Total	6.262.501.566	9.479.103.844	51,4
Regular volume:			
Equities	1.847.952	2.438.210	31,9
Bonds	38.004.818	58.252.798	53,3
Reported volume*	842.620	870.335	3,3
Institutional volume**	297.042.547	446.023.200	50,2
Total	2.220.919.892	2.720.170.642	22,5
CROBEX[©]	2.558.657.829	3.227.755.185	26,2
CROBIS[©]	1.807,5	2.040,0	12,9
Total number of trades	104,1413	104,9824	0,8
Number of securities traded	17.526	21.501	22,7
Market Capitalization	131	138	5,3
Equities			
Bonds	68.776,4	76.770,2	11,6
Certificates	25.837,0	32.599,4	26,2
Total	94.613,4	109.369,7	15,6
Number of trading days	63	64	1,6
Number of listed shares			
Official Market	5	5	0,0
JDD Market	129	128	-0,8
Parallel Market	55	55	0,0
Daily average:			
Turnover	99.404.787	148.110.998	49,0
Volume	40.613.616	50.433.675	24,2
Number of trades	278	336	20,8
Exchange rate at the end of period	6,0628	6,1706	1,8

*Reported trades are trades with bonds greater than 3,000,000 HRK in accordance with the Zagreb Stock Exchange Rules.

**Institutional trades are trades reported to the Exchange by institutional investors in accordance with Securities Law.

1.2. Trading Overview by Month

(Turnover and Market Capitalization in millions of Kunas)

	July	August	September
Regular turnover:			
Equities	173.135.533	325.478.520	428.614.263
Bonds	7.470.116	36.126.806	88.032.229
Certificates	696.268	0	0
Reported turnover*	263.827.606	392.317.193	551.404.497
Institutional turnover**	1.920.737.893	2.310.779.700	2.980.483.217
Total	2.365.867.417	3.064.702.220	4.048.534.206
Regular volume:			
Equities	465.897	855.090	1.117.223
Bonds	2.984.527	14.951.053	40.317.218
Certificates	870.335	0	0
Reported volume*	100.623.200	156.000.000	189.400.000
Institutional volume**	658.279.091	1.066.126.847	995.764.704
Total	763.223.050	1.237.932.990	1.226.599.145
CROBEX[©]	1.839,8	1.934,0	2.040,0
CROBIS[©]	104,2328	104,2328	104,9824
Total number of trades	4.468	7.791	9.242
Number of securities traded	118	123	124
Market Capitalization			
Equities	68.955,1	73.390,7	76.770,2
Bonds	31.553,5	32.053,0	32.599,4
Total	100.508,6	105.443,7	109.369,7
Number of trading days	21	21	22
Daily average:			
Turnover	112.660.353	145.938.201	184.024.282
Volume	36.343.955	58.949.190	55.754.507
Number of trades	213	371	420

*Reported trades are trades with bonds greater than 3,000,000 HRK in accordance with the Zagreb Stock Exchange Rules.

**Institutional trades are trades reported to the Exchange by institutional investors in accordance with Securities Law.

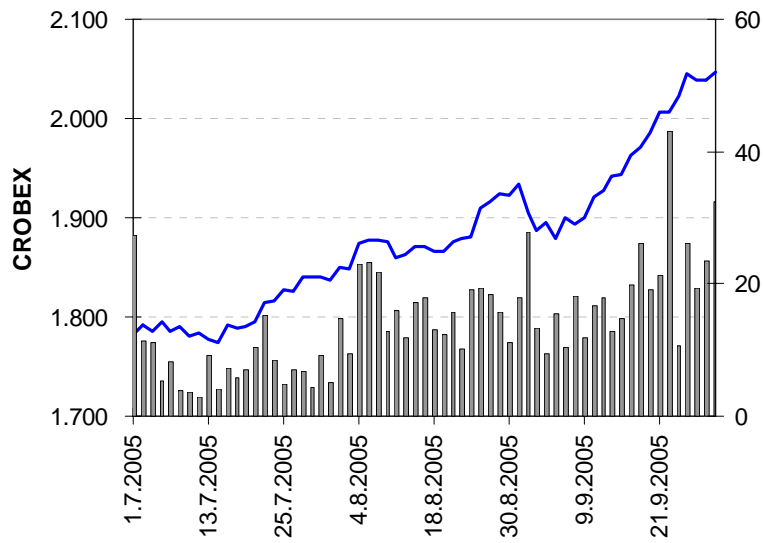


Chart 1: Zagreb Stock Exchange equity index CROBEX[®] and equity turnover

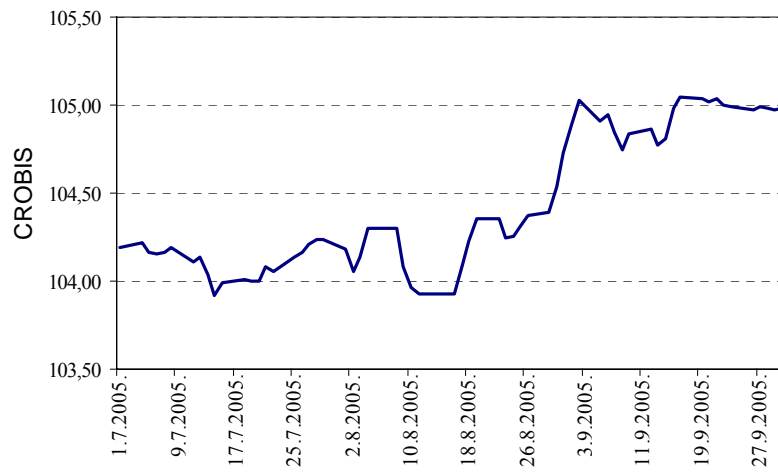


Chart 2: Zagreb Stock Exchange bond index CROBIS[®]

1.3. Shares performance

(All prices and turnover in Kunas, market capitalization in millions of Kunas)

	High	Low	Last	Average	Date	Net Change	Volume	Turnover	Mkt Cap
Official Market									
CROS-P-A	5.500,00	4.611,00	5.200,00	5.071,44	30.9.2005	4,00	526	2.667.580	45,50
CROS-R-A	5.600,00	4.900,00	5.600,00	5.466,34	30.9.2005	5,66	1.050	5.739.659	1.722,55
ISTT-R-A	198,00	174,00	197,00	190,87	30.9.2005	9,44	31.256	5.965.901	920,97
PLVA-R-A	430,00	340,00	420,00	387,07	30.9.2005	10,53	244.338	94.577.083	7.808,91
PODR-R-A	310,00	256,02	305,00	278,43	30.9.2005	8,93	288.905	80.439.677	1.653,10
JDD Market									
ADHT-R-A	567,40	506,00	567,40	556,27	26.8.2005	12,13	14.876	8.275.097	191,49
ADRS-P-A	3.597,99	3.266,02	3.489,99	3.426,65	30.9.2005	0,40	34.444	118.027.635	2.367,64
AMDN-R-A	160,00	156,00	160,00	159,44	29.9.2005	2,56	659	105.068	122,46
ARNT-R-A	210,00	170,01	200,00	197,79	30.9.2005	19,02	53.950	10.670.582	436,50
ATLS-R-A	89,99	74,00	85,01	80,27	30.9.2005	1,20	55.570	4.460.780	162,37
ATPL-R-A	920,00	555,10	902,00	803,22	30.9.2005	52,11	167.097	134.215.430	1.228,76
AUHR-R-A	8.000,00	8.000,00	8.000,00	8.000,00	26.7.2005	90,48	3	24.000	143,08
BD62-R-A	275,01	220,00	275,00	242,87	30.9.2005	22,22	29.536	7.173.378	206,83
BDMR-R-A	900,00	800,00	900,00	804,44	25.7.2005	-10,00	45	36.200	89,40
BLSC-R-A	400,00	320,00	400,00	346,46	30.9.2005	21,21	18.047	6.252.525	465,72
CEBA-R-A	680,00	420,00	600,00	466,38	28.9.2005	46,34	5.736	2.675.162	133,05
CRBT-R-A	75,00	75,00	75,00	75,00	15.9.2005	0,00	38	2.850	13,51
DLKV-R-A	427,99	318,00	427,99	369,66	30.9.2005	29,69	98.128	36.274.086	981,73
ELKA-R-A	121,00	101,06	120,00	116,39	30.9.2005	14,29	19.050	2.217.180	184,39
ELPR-R-A	250,00	201,01	240,00	243,78	30.9.2005	19,99	21.157	5.157.561	80,37
ERNT-R-A	2.000,00	1.800,00	2.000,00	1.864,81	28.9.2005	8,11	2.086	3.889.999	2.663,30
EXCL-R-A	149,00	80,00	135,00	127,61	23.9.2005	0,00	1.940	247.565	64,12
FNVC-R-A	200,02	150,00	200,01	166,78	29.9.2005	29,04	3.508	585.059	123,56
FRNK-R-A	1.700,00	1.149,99	1.650,00	1.438,92	30.9.2005	43,48	5.994	8.624.900	704,83
HDEL-R-A	100,00	100,00	100,00	100,00	1.8.2005	-9,09	90	9.000	62,39
HICZ-R-B	399,99	385,00	385,00	386,46	20.9.2005	0,00	413	159.608	334,90
HMAM-R-A	175,00	150,00	175,00	165,29	2.9.2005	24,98	2.011	332.404	195,91
HRDH-R-A	180,00	112,00	175,00	141,50	30.9.2005	31,78	40.708	5.760.241	147,49
HUPZ-R-A	1.590,00	640,02	1.400,00	1.123,22	30.9.2005	115,38	22.775	25.581.343	718,67
IGH-R-A	2.750,00	1.899,90	2.610,00	2.306,98	30.9.2005	30,50	10.433	24.068.684	413,89
IKBA-R-A	1.420,00	1.420,00	1.420,00	1.420,00	25.8.2005	0,00	882	1.252.440	81,63
INDG-R-A	748,00	550,00	748,00	604,96	30.8.2005	62,61	4.870	2.946.176	93,55
JDBA-R-A	6.749,99	4.500,00	6.500,00	5.635,01	30.9.2005	44,44	1.394	7.855.207	236,60
JDPL-R-A	339,99	272,02	315,00	305,42	30.9.2005	9,38	19.434	5.935.613	515,55
JMNC-R-A	18.000,09	15.000,00	18.000,00	17.066,95	29.9.2005	28,57	93	1.587.227	398,27
JNAF-R-A	2.380,00	1.701,03	2.051,01	1.952,36	28.9.2005	10,87	823	1.606.793	1.523,58
KABA-P-A	80,00	60,01	80,00	68,58	21.9.2005	33,33	28	1.920	0,87
KABA-R-A	175,00	140,00	175,00	166,07	30.9.2005	12,90	12.819	2.128.892	117,21
KBZ-R-A	220,00	135,00	188,00	158,38	30.9.2005	10,59	211.437	33.486.672	248,15
KNZM-R-A	3.920,00	3.050,00	3.920,00	3.438,85	29.9.2005	28,52	256	880.346	494,42
KODT-P-A	470,00	410,00	470,00	454,94	30.9.2005	16,05	247	112.370	14,44
KODT-R-A	515,00	377,10	515,00	472,07	29.9.2005	24,09	85	40.126	37,76
KOEI-R-A	293,00	205,00	279,90	256,48	30.9.2005	33,29	148.919	38.194.595	704,52
KRAS-R-A	549,99	420,01	535,00	474,95	30.9.2005	21,59	23.541	11.180.780	734,89
LEDO-R-A	900,00	900,00	900,00	900,00	12.7.2005	-5,36	5	4.500	198,15

	High	Low	Last	Average	Date	Net Change	Volume	Turnover	Mkt Cap
LKPC-R-A	400,00	400,00	400,00	400,00	2.9.2005	0,00	40	16.000	89,05
LKRI-R-A	102,50	102,50	102,50	102,50	27.7.2005	0,00	6.750	691.875	308,71
LLRB-R-A	145,00	120,00	140,32	135,90	28.9.2005	-23,73	931	126.526	17,84
LPML-R-A	150,00	150,00	150,00	150,00	8.9.2005	50,00	18	2.700	10,62
LURA-R-A	370,00	340,00	352,60	351,88	19.9.2005	2,20	3.552	1.249.865	1.057,80
MAIS-R-A	170,00	148,99	165,00	160,94	7.9.2005	10,00	3.560	572.951	1.692,47
MDKA-R-A	8.000,00	7.480,00	7.900,00	7.652,57	26.9.2005	-0,25	1.869	14.302.649	238,53
MDPL-R-A	108,00	108,00	108,00	108,00	29.7.2005	25,58	2.533	273.564	16,86
MLNR-R-A	380,01	271,00	380,00	304,39	22.9.2005	16,92	1.759	535.414	74,26
MMBA-R-A	800,00	630,00	800,00	664,39	28.9.2005	40,35	41	27.240	255,80
PBZ-R-A	666,00	550,00	636,01	577,55	30.9.2005	13,57	14.080	8.131.931	10.595,93
PLAG-R-A	2.730,00	2.000,00	2.700,00	2.516,48	30.9.2005	28,57	4.849	12.202.405	1.475,06
POBA-R-A	234,21	133,01	234,21	204,69	26.9.2005	41,95	73.906	15.128.111	74,95
PTKM-R-A	92,50	65,82	91,50	82,75	30.9.2005	31,65	258.603	21.400.164	226,16
RIBA-R-A	360,00	291,07	360,00	332,10	30.9.2005	12,50	107.742	35.781.493	4.767,29
TDZ-R-A	2.200,00	2.090,00	2.200,00	2.113,37	21.9.2005	7,06	178	376.180	714,58
THNK-R-A	1.700,00	1.222,00	1.700,00	1.519,68	30.9.2005	30,77	2.502	3.802.234	322,08
TISK-R-A	460,00	70,00	310,00	287,02	30.9.2005	210,00	5.785	1.660.397	739,84
TLM-R-A	120,00	38,12	85,00	79,05	30.9.2005	70,00	9.204	727.579	156,41
TMPO-R-A	50,00	50,00	50,00	50,00	28.9.2005	0,00	6	300	30,40
TNPL-R-A	3.320,00	2.600,00	3.100,00	3.067,69	30.9.2005	11,15	10.647	32.661.712	1.941,79
TRFM-R-A	1.119,00	999,00	999,00	1.019,42	30.9.2005	-10,80	2.326	2.371.168	35,96
ULPL-R-A	2.580,00	1.352,00	2.500,00	2.027,67	30.9.2005	64,47	9.168	18.589.693	468,75
ULJN-R-A	149,97	58,06	149,00	97,16	30.9.2005	148,33	8.350	811.304	333,20
VDKT-R-A	540,00	320,00	540,00	404,67	13.9.2005	63,64	2.827	1.144.016	186,74
ZABA-P-B	3.650,00	3.050,00	3.650,00	3.372,32	30.9.2005	5,80	374	1.261.248	41,34
ZABA-R-A	4.100,00	3.650,00	4.100,00	3.823,68	30.9.2005	9,33	2.672	10.216.883	11.781,77
ZAPI-R-A	3.600,00	3.250,00	3.500,00	3.482,41	30.9.2005	9,38	2.512	8.747.815	2.171,58
Parallel Market									
GKBA-P-A	120,00	100,00	120,00	103,92	20.9.2005	20,00	82	8.521	26,40
GKBA-R-A	120,00	120,00	120,00	120,00	20.9.2005	0,00	110	13.200	75,33
HIMR-R-A	310,00	310,00	310,00	310,00	9.9.2005	28,10	3.377	1.046.870	197,12
HRBC-R-A	249,00	239,99	249,00	243,58	12.9.2005	3,75	598	145.662	252,04
HSTS-R-A	3.500,00	3.400,00	3.500,00	3.486,57	22.8.2005	0,00	67	233.600	127,13
IPKT-R-A	64,00	64,00	64,00	64,00	9.8.2005	0,00	726	46.464	36,14
KAPI-R-A	1.804,59	1.800,00	1.804,59	1.804,03	30.9.2005	0,00	1.654	2.983.874	922,59
KODS-R-A	20,00	20,00	20,00	20,00	28.9.2005	-20,00	2.000	40.000	2,13
KORF-R-A	155,00	137,00	145,00	147,60	19.9.2005	3,57	4.649	686.170	1.176,44
MLDN-R-A	400,00	200,00	200,00	205,68	29.9.2005	-33,33	1.319	271.286	19,22
PRFC-R-A	83,20	83,20	83,20	83,20	29.8.2005	9,47	164	13.645	325,55
PUNT-R-A	26,97	10,50	23,00	19,59	30.9.2005	76,92	126.780	2.483.082	6,12
RIVP-R-A	312,00	260,00	310,02	276,35	30.9.2005	8,78	31.524	8.711.684	1.132,66
SLBA-R-A	2.000,00	1.900,10	2.000,00	1.982,37	28.9.2005	7,52	98	194.272	569,88
SNHO-R-A	155,00	115,00	155,00	123,79	14.9.2005	34,78	24.201	2.995.948	523,50
SUNH-R-A	135,00	110,10	128,00	121,90	30.9.2005	0,02	62.094	7.569.076	423,80
VLHO-R-A	120,00	109,00	109,00	112,96	14.9.2005	-0,91	33.510	3.785.150	368,14
ZLAR-R-A	215,00	151,01	205,00	189,46	30.9.2005	39,41	9.271	1.756.502	113,23

1.4. Bonds performance

(All prices in % of par value, turnover in Kunas)

	High	Low	Last	Date	Volume	Turnover
Regular trades						
AGKR-O-074A	107,20	107,15	107,15	30.8.2005	60.000	473.525
ATGR-O-077A	100,70	100,10	100,70	30.8.2005	53.500	397.192
DAB-O-05CA	102,65	102,65	102,65	15.7.2005	10.000	74.967
FNOI-D-061A	97,01	95,64	96,40	11.8.2005	40.880	2.895
FNOI-D-067A	93,38	91,20	92,01	11.8.2005	40.880	2.767
FNOI-D-071A	89,82	86,90	88,51	11.8.2005	40.880	2.657
FNOI-D-077A	86,46	82,87	83,31	11.8.2005	40.880	2.518
FNOI-D-081A	83,17	79,00	79,31	11.8.2005	40.880	2.403
FNOI-D-087A	80,04	75,71	78,01	11.8.2005	40.880	2.342
FNOI-D-091A	76,99	71,74	71,92	11.8.2005	40.880	2.188
FNOI-D-097A	74,11	68,41	68,52	11.8.2005	40.880	2.089
FNOI-D-101A	71,29	65,19	65,23	11.8.2005	40.880	1.994
FNOI-D-107A	68,62	62,15	62,15	11.8.2005	40.880	1.904
FNOI-D-111A	66,01	59,17	59,17	11.8.2005	40.880	1.816
FNOI-D-117A	63,54	56,37	56,37	11.8.2005	40.880	1.735
FNOI-D-121A	61,12	53,67	53,67	11.8.2005	40.880	1.655
FNOI-D-127A	58,82	51,12	51,12	11.8.2005	40.880	1.580
FNOI-D-131A	56,58	48,66	48,66	11.8.2005	40.880	1.508
FNOI-D-137A	54,46	46,37	46,37	11.8.2005	40.880	1.440
FNOI-D-141A	52,39	44,14	44,14	11.8.2005	40.880	1.374
FNOI-D-147A	50,43	42,05	42,05	11.8.2005	40.880	1.312
FNOI-D-151A	48,51	40,04	40,04	11.8.2005	40.880	1.253
FNOI-D-157A	46,69	38,15	38,15	11.8.2005	40.880	1.196
FNOI-D-161A	44,92	36,31	36,31	11.8.2005	40.880	1.142
FNOI-D-167A	43,22	34,59	34,59	11.8.2005	40.880	1.090
FNOI-D-171A	41,58	32,93	32,93	11.8.2005	40.880	1.040
FNOI-D-177A	40,02	31,37	31,37	11.8.2005	40.880	994
FNOI-D-181A	38,50	29,87	29,87	11.8.2005	40.880	948
FNOI-D-187A	37,06	28,46	28,46	11.8.2005	40.880	906
FNOI-D-191A	35,65	27,09	27,09	11.8.2005	40.880	865
FNOI-D-197A	34,31	25,81	25,81	11.8.2005	40.880	826
GDKC-O-116A	101,35	100,15	101,35	29.9.2005	1.150.000	993.407
HYBA-O-086A	101,50	101,50	101,50	30.8.2005	35.900	36.439
PLVA-O-115A	103,50	100,30	103,50	31.8.2005	627.500	4.772.899
PODR-O-072A	101,40	99,60	101,20	30.9.2005	371.000	2.747.461
RHMF-O-077A	101,90	101,30	101,90	19.9.2005	647.221	4.877.234
RHMF-O-085A	104,50	101,50	104,35	29.9.2005	26.256.467	27.033.107
RHMF-O-08CA	112,30	112,10	112,20	27.7.2005	283.500	2.326.826
RHMF-O-103A	109,30	104,10	108,75	27.9.2005	19.169.970	20.501.257
RHMF-O-125A	119,40	117,15	119,10	29.9.2005	2.131.800	18.864.975
RHMF-O-142A	112,25	109,20	112,25	28.9.2005	1.773.700	14.680.332
RHMF-O-157A	102,55	99,05	102,55	30.9.2005	4.537.600	33.803.095
TOTAL					58.252.798	131.629.152
Reported trades*						
DAB-O-05CA	102,80	102,10	102,10	24.8.2005	2.483.200	18.689.624
PLVA-O-115A	100,40	100,40	100,40	19.7.2005	3.000.000	21.986.477
RHMF-O-077A	102,00	101,35	101,75	20.9.2005	18.000.000	135.508.700

	High	Low	Last	Date	Volume	Turnover
RHMF-O-085A	103,30	102,35	103,30	9.9.2005	18.500.000	19.015.500
RHMF-O-08CA	112,40	111,70	111,70	14.9.2005	7.500.000	61.838.064
RHMF-O-103A	109,10	104,10	109,10	21.9.2005	320.900.000	339.450.350
RHMF-O-125A	119,30	117,30	119,00	27.9.2005	12.500.000	109.297.769
RHMF-O-142A	112,15	109,40	112,15	28.9.2005	16.000.000	130.414.667
RHMF-O-157A	102,65	98,95	102,65	29.9.2005	19.400.000	144.722.976
RHMF-O-19BA	113,75	108,95	113,75	29.9.2005	27.740.000	226.625.171
TOTAL					446.023.200	1.207.549.297
Institutional trades**						
AGKR-O-074A	107,70	107,00	107,60	29.9.2005	9.503.000	75.803.697
ATGR-O-077A	101,15	100,35	101,15	30.9.2005	1.860.000	13.832.121
BLSC-O-091A	101,75	100,08	101,50	29.9.2005	1.015.200	7.510.240
DAB-O-05CA	103,05	101,45	101,45	26.9.2005	44.155.772	331.581.658
FNOI-D-061A	97,87	97,87	97,87	8.9.2005	285.649	20.812
FNOI-D-067A	94,64	94,64	94,64	8.9.2005	285.649	20.125
FNOI-D-071A	91,47	91,47	91,47	8.9.2005	285.649	19.451
FNOI-D-077A	88,45	88,45	88,45	8.9.2005	285.649	18.809
FNOI-D-081A	85,49	85,49	85,49	8.9.2005	285.649	18.179
FNOI-D-087A	82,65	82,65	82,65	8.9.2005	285.649	17.576
FNOI-D-091A	79,88	79,88	79,88	8.9.2005	285.649	16.987
FNOI-D-097A	77,24	77,24	77,24	8.9.2005	285.649	16.425
FNOI-D-101A	74,65	74,65	74,65	8.9.2005	285.649	15.874
FNOI-D-107A	72,19	72,19	72,19	8.9.2005	285.649	15.351
FNOI-D-111A	69,77	69,77	69,77	8.9.2005	285.649	14.837
FNOI-D-117A	67,47	67,47	67,47	8.9.2005	285.649	14.348
FNOI-D-121A	65,20	65,20	65,20	8.9.2005	285.649	13.865
FNOI-D-127A	63,04	63,04	63,04	8.9.2005	285.649	13.405
FNOI-D-131A	60,93	60,93	60,93	8.9.2005	264.187	11.983
FNOI-D-137A	58,92	58,92	58,92	8.9.2005	264.187	11.588
FNOI-D-141A	56,94	56,94	56,94	8.9.2005	264.187	11.199
FNOI-D-147A	55,06	55,06	55,06	8.9.2005	264.187	10.829
FNOI-D-151A	53,22	53,22	53,22	8.9.2005	264.187	10.467
FNOI-D-157A	51,46	51,46	51,46	8.9.2005	264.187	10.121
FNOI-D-161A	49,74	49,74	49,74	8.9.2005	264.187	9.783
FNOI-D-167A	48,09	48,09	48,09	8.9.2005	264.187	9.458
FNOI-D-171A	46,47	46,47	46,47	8.9.2005	264.187	9.139
FNOI-D-177A	44,94	44,94	44,94	8.9.2005	264.187	8.838
FNOI-D-181A	43,43	43,43	43,43	8.9.2005	264.187	8.542
FNOI-D-187A	42,00	42,00	42,00	8.9.2005	264.187	8.260
FNOI-D-191A	40,59	40,59	40,59	8.9.2005	264.187	7.983
FNOI-D-197A	39,25	39,25	39,25	8.9.2005	264.187	7.719
GDKC-O-116A	100,75	100,50	100,75	20.9.2005	3.958.000	3.415.170
GDZD-O-119A	108,10	105,33	108,10	29.9.2005	3.480.400	27.121.237
HYBA-O-086A	101,30	101,15	101,15	24.8.2005	7.300.000	7.386.650
MDKA-O-087A	101,10	99,75	101,10	30.9.2005	1.588.400	11.794.104
PLVA-O-115A	105,70	99,95	104,90	30.9.2005	20.985.500	157.380.686
PODR-O-072A	100,50	100,25	100,50	29.8.2005	2.160.000	15.916.693
RHMF-O-077A	102,40	101,30	101,64	30.9.2005	113.487.500	852.565.349
RHMF-O-085A	104,36	101,40	104,05	27.9.2005	398.057.366	407.691.396
RHMF-O-08CA	112,80	111,80	112,19	29.9.2005	23.070.500	190.500.906
RHMF-O-103A	109,57	103,60	109,40	30.9.2005	1.662.770.000	1.747.625.230
RHMF-O-125A	119,55	117,20	119,20	30.9.2005	73.178.500	635.530.545
RHMF-O-142A	112,55	109,15	112,50	30.9.2005	122.420.000	996.223.761

	High	Low	Last	Date	Volume	Turnover
RHMF-O-157A	102,80	98,84	102,51	30.9.2005	125.123.800	932.636.552
RHMF-O-19BA	113,95	101,75	113,80	30.9.2005	97.359.000	797.112.864
TOTAL					2.719.170.642	7.212.000.810
BONDS TOTAL					3.223.446.640	8.551.179.259

*Reported trades are trades with bonds greater then 3,000,000 HRK in accordance with the Zagreb Stock Exchange Rules.

**Institutional trades are trades reported to the Exchange by institutional investors in accordance with Securities Law.

1.5. Certificates performance

(All prices in % of par value, turnover in Kunas)

Symbol	High	Low	Last	Date	Volume	Turnover
RHMF-A-A	80,00	80,00	80,00	14.7.2005	870.335	696.268

1.6. Stocks with the largest Market Capitalization

(Market capitalization in millions of Kunas)

	Symbol	Market Cap. 30.9.2005.	Percentage (%)	Cumulative percentage (%)
1	ZABA-R-A	11.781,8	15,3	15,3
2	PBZ-R-A	10.595,9	13,8	29,1
3	PLVA-R-A	7.808,9	10,2	39,3
4	RIBA-R-A	4.767,3	6,2	45,5
5	ERNT-R-A	2.663,3	3,5	49,0
6	ADRS-P-A	2.367,6	3,1	52,1
7	ZAPI-R-A	2.171,6	2,8	54,9
8	TNPL-R-A	1.941,8	2,5	57,4
9	CROS-R-A	1.722,5	2,2	59,7
10	MAIS-R-A	1.692,5	2,2	61,9
	Others	29.257,0	38,1	100,0
	Total	76.770,2		

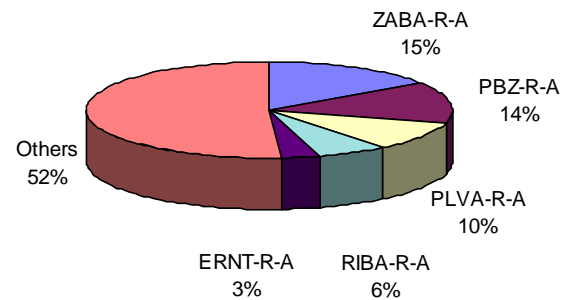


Chart 3: Market Capitalization

1.7. Most active stocks by turnover

(Turnover in Kunas)

	Symbol	Turnover	Percentage (%)	Cumulative percentage (%)
1	ATPL-R-A	134.215.430	14,5	14,5
2	ADRS-P-A	118.027.635	12,7	27,2
3	PLVA-R-A	94.577.083	10,2	37,4
4	PODR-R-A	80.439.677	8,7	46,1
5	KOEI-R-A	38.194.595	4,1	50,2
6	DLKV-R-A	36.274.086	3,9	54,1
7	RIBA-R-A	35.781.493	3,9	58,0
8	KBZ-R-A	33.486.672	3,6	61,6
9	TNPL-R-A	32.661.712	3,5	65,1
10	HUPZ-R-A	25.581.343	2,8	67,9
	Others	297.988.589	32,1	100,0
	Total	927.228.316		

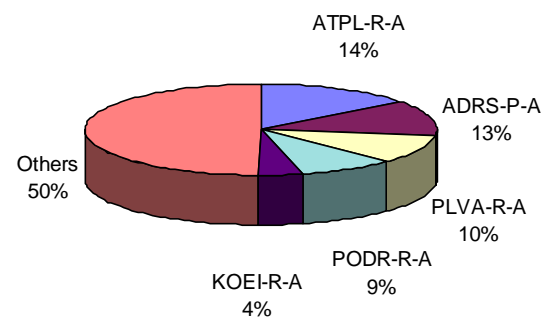


Chart 4: Distribution of equity turnover

1.8. Best performing stocks

Symbol	Third quarter of 2005	Second quarter of 2005	% change
TISK-R-A	100,00	310,00	210,0
ULJN-R-A	60,00	149,00	148,3
HUPZ-R-A	650,00	1.400,00	115,4
AUHR-R-A	4.200,00	8.000,00	90,5
PUNT-R-A	13,00	23,00	76,9
TLM-R-A	50,00	85,00	70,0
ULPL-R-A	1.520,00	2.500,00	64,5
VDKT-R-A	330,00	540,00	63,6
INDG-R-A	460,01	748,00	62,6
ATPL-R-A	593,00	902,00	52,1

1.9. Underperforming stocks

Symbol	Third quarter of 2005	Second quarter of 2005	% change
MLDN-R-A	300,00	200,00	-33,3
LLRB-R-A	183,98	140,32	-23,7
KODS-R-A	25,00	20,00	-20,0
TRFM-R-A	1.120,00	999,00	-10,8
BDMR-R-A	1.000,00	900,00	-10,0
HDEL-R-A	110,00	100,00	-9,1
LEDO-R-A	951,00	900,00	-5,4
VLHO-R-A	110,00	109,00	-0,9
MDKA-R-A	7.920,00	7.900,00	-0,3
KAPI-R-A	1.804,59	1.804,59	0,0

1.10. Financial ratios

(Price, earnings and dividends in Kunas)

Symbol	Price 30.9.2005	Earnings per share	P/E ratio	Dividend for 2004	Dividend yield
CROS-R-A	5.600,00	325,5	17,2	119,00	2,1%
ISTT-R-A	197,00	17,2	11,5	5,30	2,7%
PLVA-R-A	420,00	44,7	9,4	12,00	2,9%
PODR-R-A	305,00	17,8	17,1	5,00	1,6%

1.11. Top 10 Members by Equity Turnover

Rang	Member
1	Fima vrijednosnice d.o.o.
2	Zagrebačka banka d.d.
3	Auctor d.o.o.
4	Erste vrijednosni papiri d.o.o.
5	Raiffeisenbank Austria d.d.
6	Hypo Alpe-Adria-Bank d.d.
7	TO ONE brokeri d.o.o.
8	Privredna banka Zagreb d.d.
9	Interkapital vrijednosni papiri d.o.o.
10	HITA vrijednosnice d.d.

1.12. Top 10 Members by Bonds Turnover

Rang	Member
1	Interkapital vrijednosni papiri d.o.o.
2	Raiffeisenbank Austria d.d.
3	I.C.F. d.o.o.
4	Erste vrijednosni papiri d.o.o.
5	InterFinance d.o.o.
6	HVB Splitska banka d.d.
7	Hypo Alpe-Adria-Bank d.d.
8	Zagrebačka banka d.d.
9	Volksbank d.d.
10	Privredna banka Zagreb d.d.

1.13. Top 10 Members by Total Turnover

Rang	Member
1	Interkapital vrijednosni papiri d.o.o.
2	Raiffeisenbank Austria d.d.
3	I.C.F. d.o.o.
4	Fima vrijednosnice d.o.o.
5	Erste vrijednosni papiri d.o.o.
6	Zagrebačka banka d.d.
7	Auctor d.o.o.
8	InterFinance d.o.o.
9	Hypo Alpe-Adria-Bank d.d.
10	Privredna banka Zagreb d.d.

2. Major events

- 30.9.2005 SN Holding d.d. reduced its share capital to a amount of 33,774,410 HRK.
- 23.9.2005 Jadranka d.d. commercial papers (ZSE symbol: JDRA-M-638A) were listed in Regular Market.
- 22.9.2005 Atlas d.d. reduced its share capital to a amount of 95,500,400 HRK.
- 16.9.2005 CROBEX© index is revised. From September 19 four new shares are included into CROBEX©. These are Jadroplov d.d., Franck d.d., Tankerska plovdba d.d. and Uljanik plovdba d.d. Weight of the Croatia osiguranje d.d., Ericsson Nikole Tesla d.d. and Dom holding is reduced by 50%.
- 13.9.2005 Bratstvo d.d. common stocks (ZSE symbol: BRAT-R-A) were delisted from JDD Market.
- 8.9.2005 Istraturist d.d. released its financial results for the first term of 2005.
- 7.9.2005 Pliva d.d. objavila je financijske rezultate za drugo tromjesečje 2005. godine.
- 19.8.2005 Mediteranska plovdba d.d. reduced its share capital to a amount of 57,766,620 HRK.
- 18.8.2005 Kerametal d.d. common stocks (ZSE symbol: KRMT-R-A) were delisted from Parallel Market .
- 11.8.2005 Uljanik plovdba d.d. reduced its share capital to a amount of 75,000,000 HRK
- 3.8.2005 Podravka d.d. d.d. released its financial results for the first term of 2005.
- 1.8.2005 Croatia osiguranje d.d. released its financial results for the first term of 2005.
- 22.7.2005 Jadranka d.d. commercial papers (ZSE symbol: JDRA-M-628A) were listed in Regular Market.
- 22.7.2005 Luka Ploče d.d. common stocks (ZSE symbol: LKPC-R-A) were listed on JDD Market.
- 15.7.2005 Government bond due on July 14, 2015 (ZSE symbol: RHMF-O-157A) started trading in Official Market. Nominal value of the issue is 350 million euros.
- 15.7.2005 Brionka d.d. common stocks (ZSE symbol: BRNK-R-A) were listed on JDD Market.
- 12.7.2005 Corporate bonds of Medika d.d. due on July 11, 2008 (ZSE symbol: MDKA-O-087A) started trading in Official Market. Nominal value of the issue is 16.5 million euros.
- 8.7.2005 Medika d.d. commercial papers (ZSE symbol: MDKA-M-528A) were delisted due to maturity.
- 4.7.2005 Zagrebačka burza d.d. reduced settlement period from T+4 to T+3.

3. Prices and volumes for the most active stocks

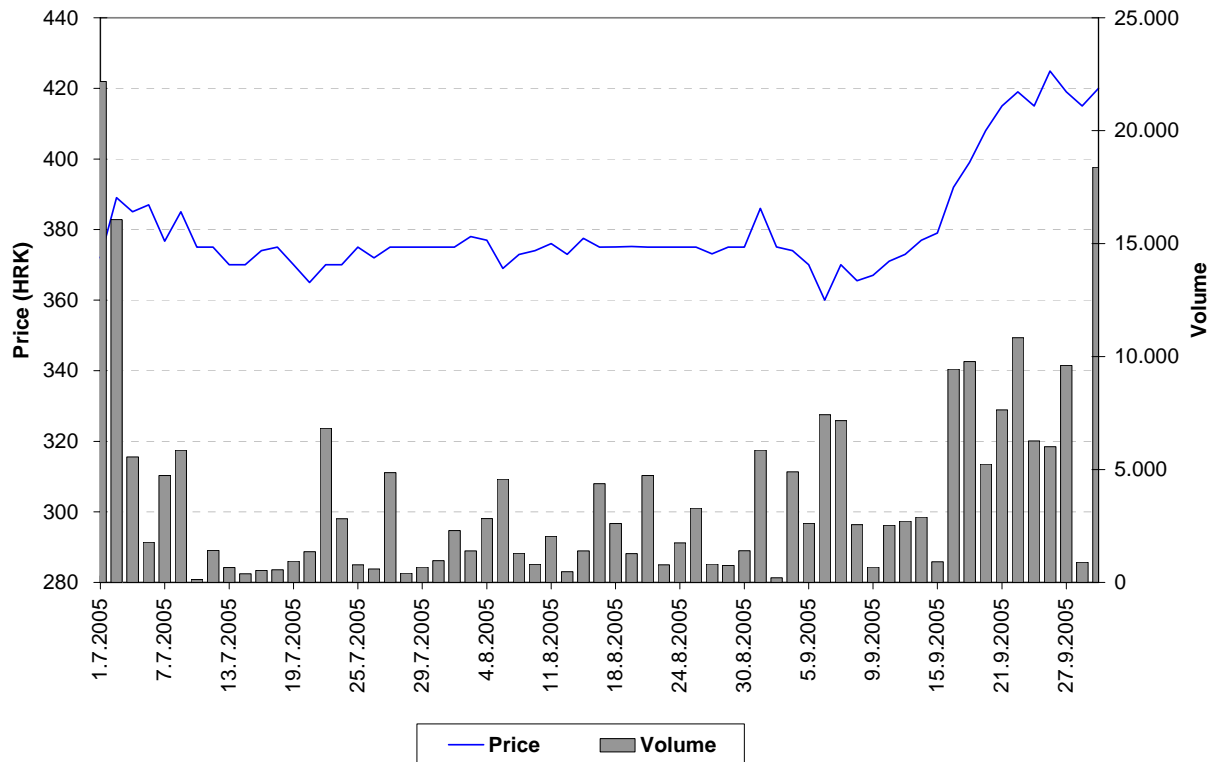


Chart 5: Pliva d.d.

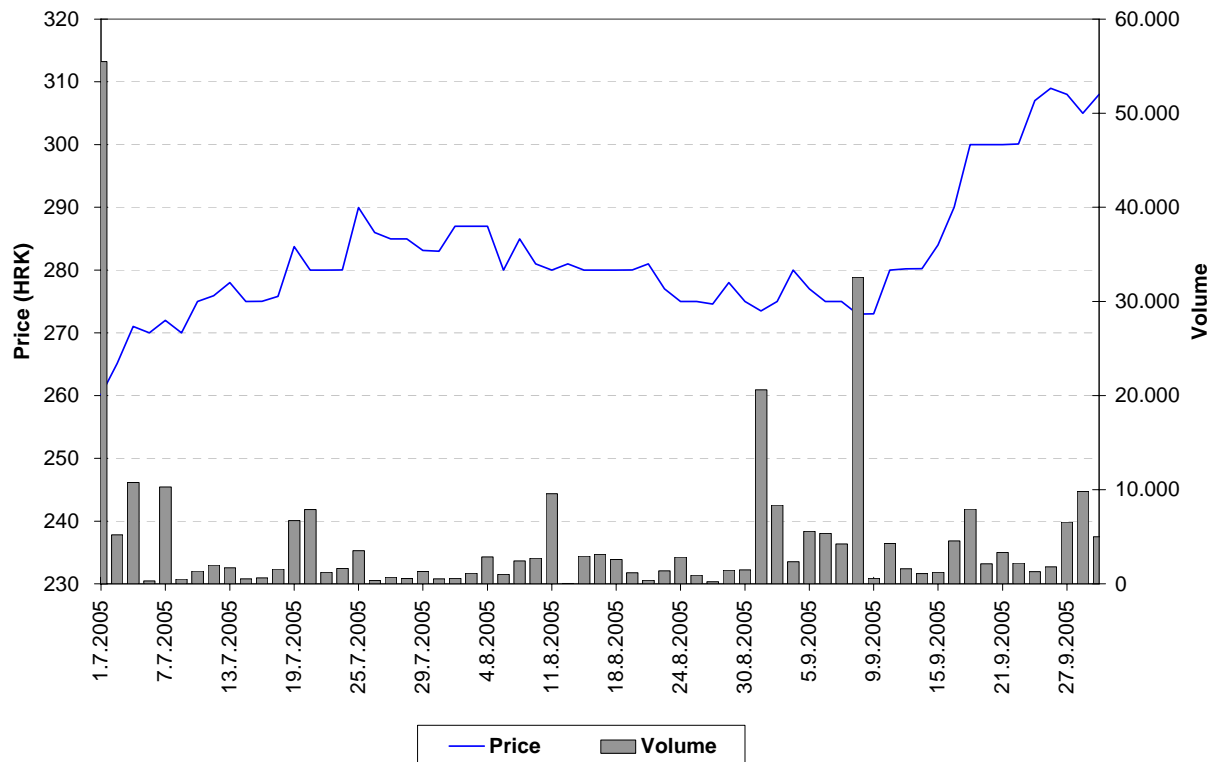


Chart 6: Podravka d.d.

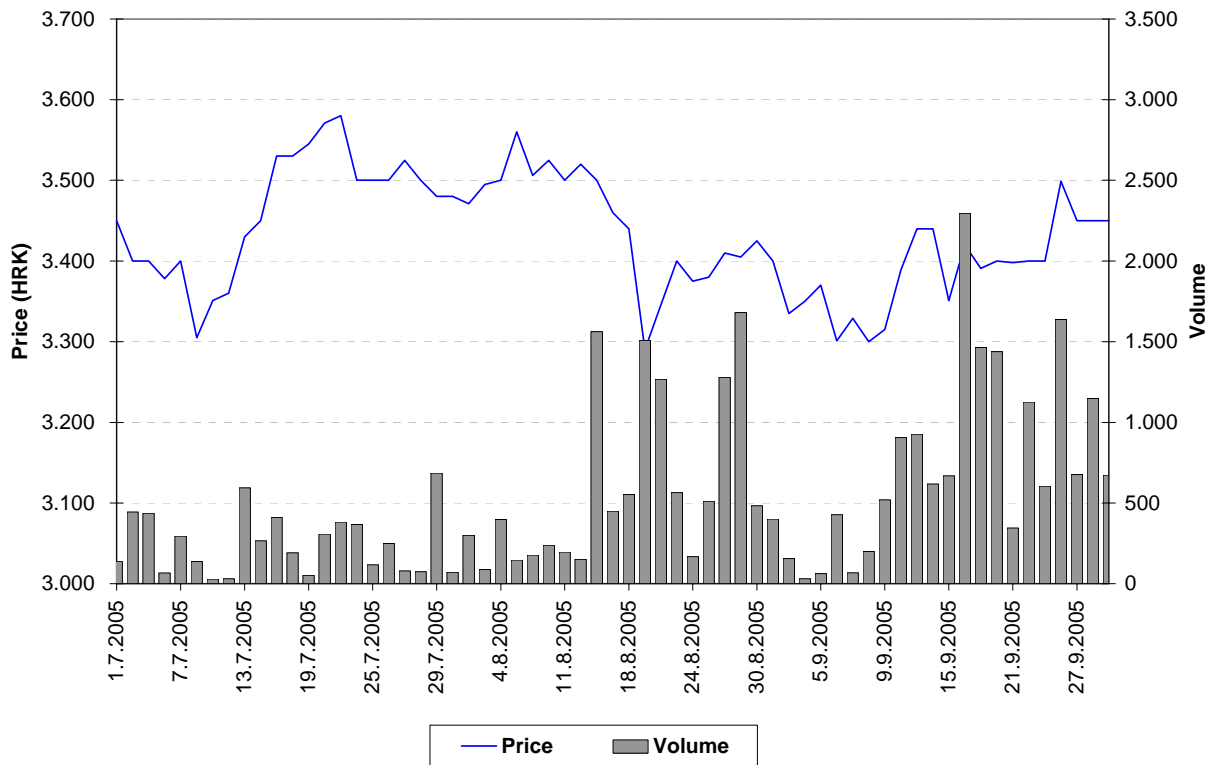


Chart 7: ADRIS GRUPA d.d., preferred stocks

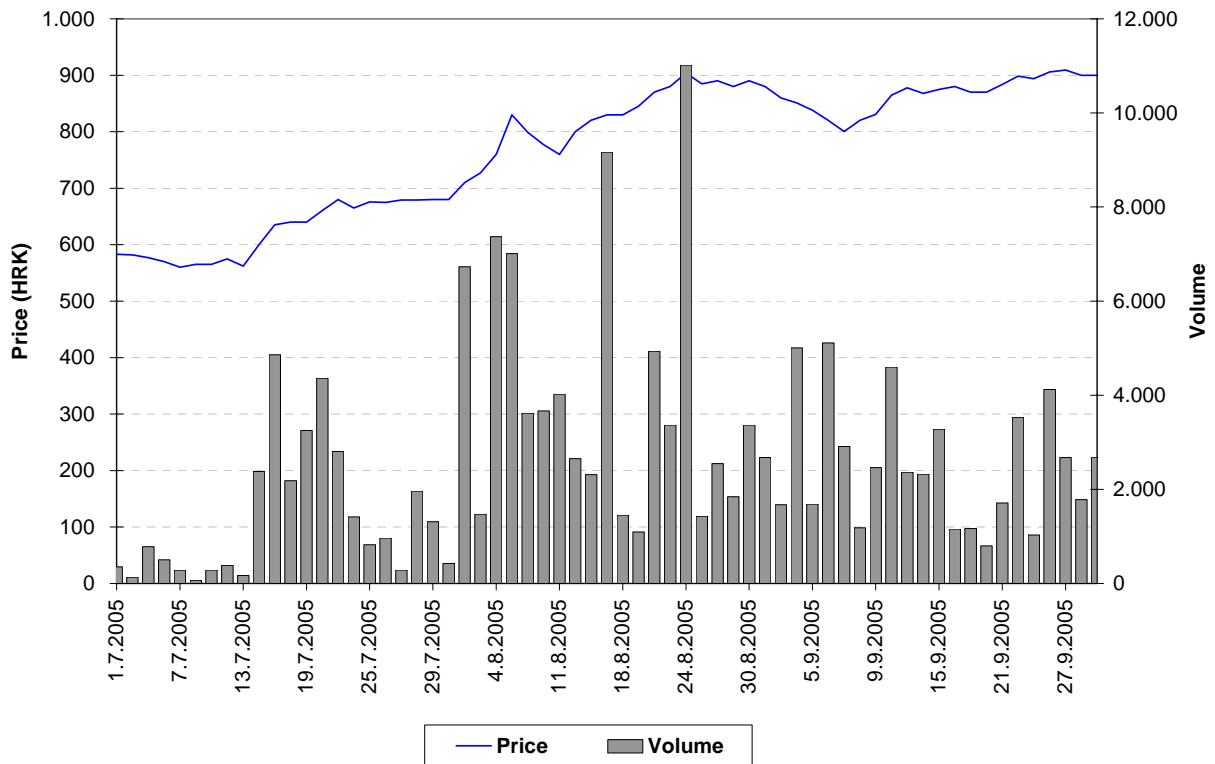


Chart 8: Atlantska plovidba d.d.

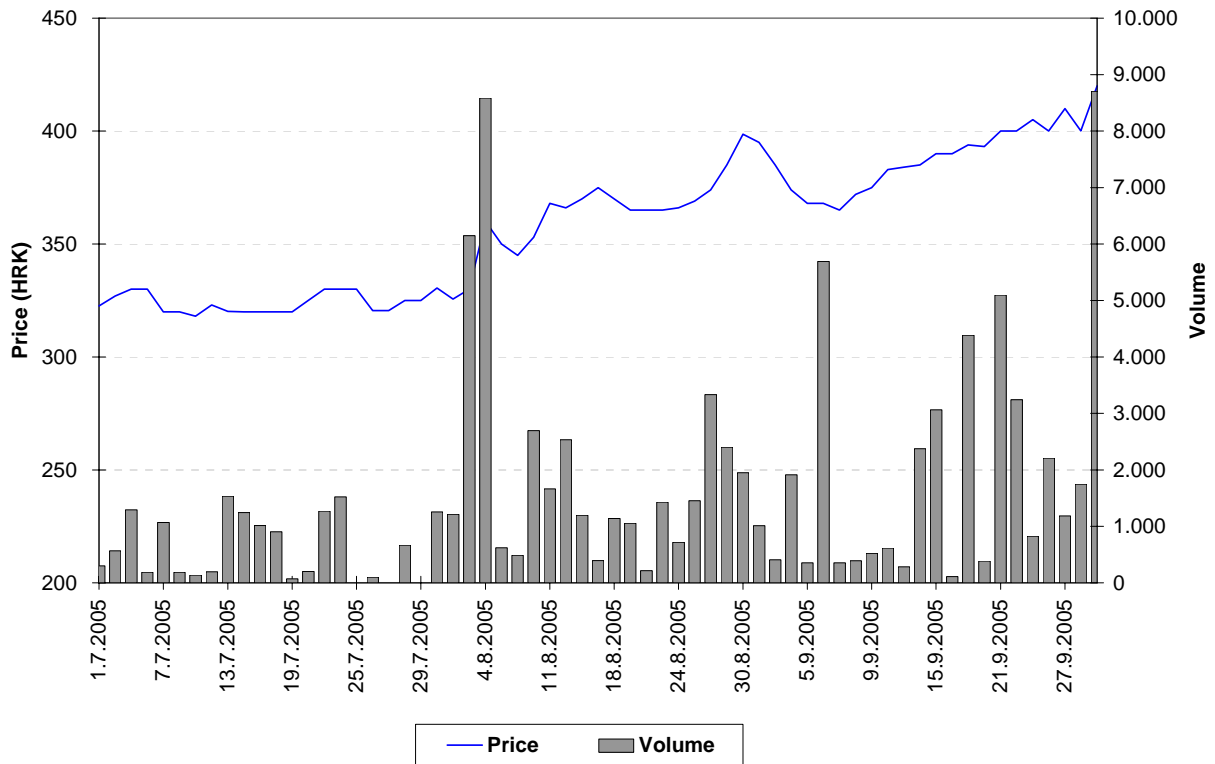


Chart 9: Dalekovod d.d.

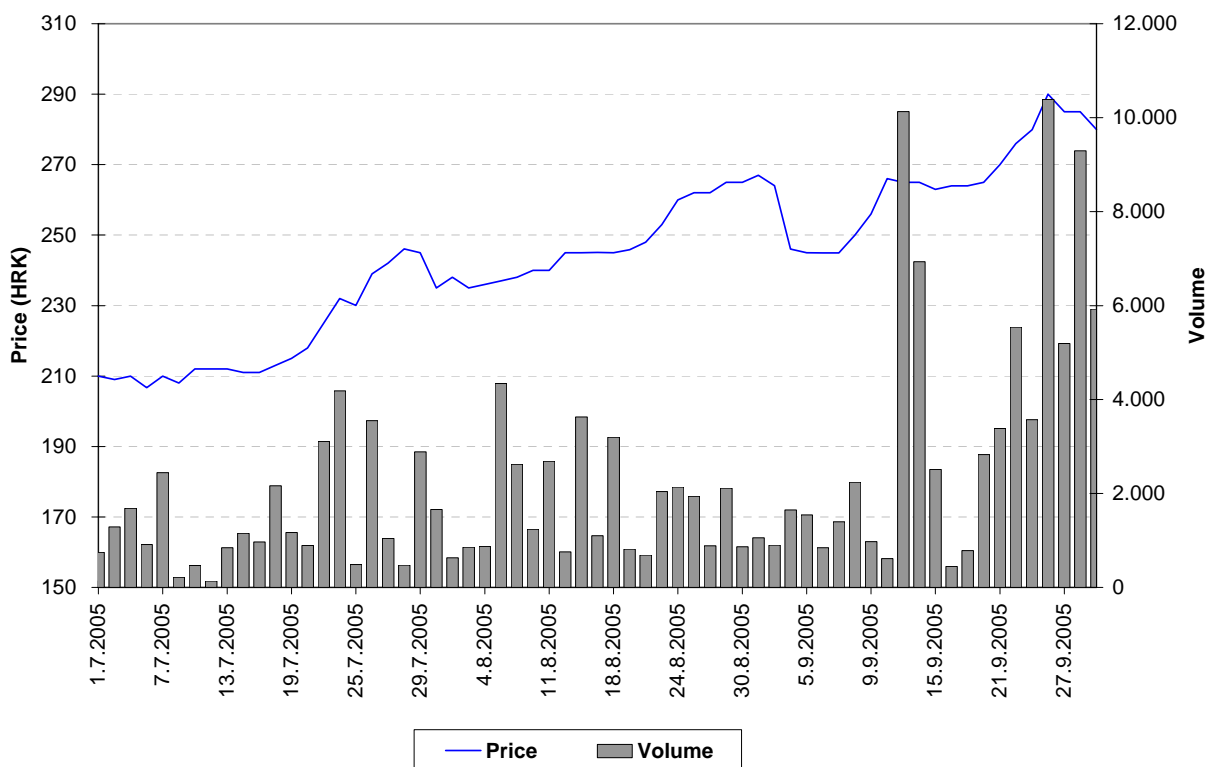


Chart 10: Končar Elektroindustrija d.d.

4. Listed shares

Symbol	Company name	Shares outstanding	Nominal value
Official Market			
Common stocks			
CROS-R-A	Croatia osiguranje d.d.	307.598	1400 HRK
ISTT-R-A	Istraturist Umag d.d.	4.674.995	100 HRK
PLVA-R-A	PLIVA d.d.	18.592.648	100 HRK
PODR-R-A	Podravka prehrambena industrija d.d.	5.420.003	300 HRK
Preferred stocks			
CROS-P-A	Croatia osiguranje d.d.	8.750	1400 HRK
JDD Market			
Common stocks			
ADCH-R-A	Adriachem d.d.	623.578	300 HRK
ADHT-R-A	Adriatic d.d.	337.480	200 HRK
ADPL-R-A	AD Plastik d.d.	2.939.709	100 HRK
ADRS-R-A	ADRIS GRUPA d.d.	961.590	100 HRK
AMDN-R-A	Apartmani Medena d.d.	765.376	300 HRK
ARNT-R-A	Arenaturist d.d.	2.182.500	300 HRK
ATLS-R-A	Atlas turistička agencija d.d.	1.910.008	100 HRK
ATPL-R-A	Atlantska plovidba d.d.	1.362.260	300 HRK
AUHR-R-A	Auto-Hrvatska d.d.	17.885	3700 HRK
BD62-R-A	Badel 1862 d.d.	752.106	300 HRK
BDMR-R-A	Brodmerkur d.d.	99.331	1900 HRK
BLSC-R-A	Belišće d.d.	1.164.312	300 HRK
CEBA-R-A	Centar banka d.d.	221.749	400 HRK
CHBL-R-A	Chromos boje i lakovi d.d.	287.740	300 HRK
CRAL-R-A	Croatia Airlines d.d.	4.349.279	200 HRK
CRBT-R-A	Croatia Baterija d.d.	180.090	300 HRK
DABA-R-A	Nova banka d.d.	2.766.398	200 HRK
DALS-R-A	Dalma d.d.	1.225.790	100 DEM
DKVS-R-A	Đakovština d.d.	793.021	300 HRK
DLKV-R-A	Dalekovod	2.293.812	100 HRK
DLMC-R-A	Dalmacijacement RMC Group d.d.	1.700.000	700 HRK
DMUS-R-A	Domus d.d.	428.6762	100 HRK
DRNJ-R-A	Drvenjača d.d.	223.990	300 HRK
DTR-R-A	Domaća tvornica rublja d.d.	107.850	100 DEM
ELKA-R-A	EIG d.d.	1.588.320	300 HRK
ELKP-R-A	Elektroprojekt d.d.	89.800	100 DEM
ELPR-R-A	Elektropromet d.d.	334.860	300 HRK
ERNT-R-A	Ericsson Nikola Tesla d.d.	1.331.650	200 HRK
EXCL-R-A	Excelsior d.d.	474.947	100 HRK
EXPD-R-A	Exportdrvo d.d.	159.064	400 HRK
FNVC-R-A	Finvest Corp d.d.	617.751	400 HRK
FRNK-R-A	Franek d.d.	427.170	600 HRK
GHPA-R-A	Grand Hotel Park d.d.	139.895	400 HRK
GPDU-R-A	GP Dubrovnik d.d.	128.835	300 HRK
HBEL-R-A	Hotel Bellevue d.d.	43.834	300 HRK

Symbol	Company name	Shares outstanding	Nominal value
HCRC-R-A	Hoteli Croatia d.d.	1.079.040	100 HRK
HDEL-R-A	Hidroelektra niskogradnja d.d.	623.881	100 HRK
HDUZ-R-A	Hotel Dubrovnik d.d.	267.200	100 DEM
HICZ-R-B	Hotel Opera d.d.	869.876	200 HRK
HMAM-R-A	Hoteli Makarska d.d.	1.119.470	200 HRK
HMLN-R-A	Hoteli Mlini d.d.	780.364	100 HRK
HMST-R-A	Hoteli Maestral d.d.	515.720	200 HRK
HPDG-R-A	Hoteli Podgora d.d.	366.250	100 DEM
HRDH-R-A	Hrvatski Duhani d.d.	842.807	300 HRK
HTCP-R-A	Hoteli Tučepi d.d.	548.200	300 HRK
HUPZ-R-A	HUP Zagreb d.d.	513.333	400 HRK
IGH-R-A	Institut građevinarstva Hrvatske d.d.	158.580	400 HRK
IKBA-R-A	Istarska kreditna banka d.d.	57.487	1100 HRK
ILRA-R-A	Ilirija d.d.	249.386	390 HRK
INDG-R-A	Industrogradnja d.d.	125.072	2700 HRK
INKR-R-A	Lasselsberger industrija keramike i porucalana d.d.	1.451.886	100 HRK
JDBA-R-A	Jadranska banka d.d.	36.400	2000 HRK
JDKM-R-A	Jadrankamen d.d.	217.330	100 DEM
JDPL-R-A	Jadroplov d.d.	1.636.674	360 HRK
JMNC-R-A	Jamnica d.d.	22.126	3800 HRK
JNAF-R-A	Jadranski naftovod d.d.	742.846	2700 HRK
KABA-R-A	Karlovačka banka d.d.	669.795	100 HRK
KBZ-R-A	Kreditna banka Zagreb d.d.	1.319.945	100 HRK
KNZM-R-A	Konzum d.d.	126.127	1800 HRK
KODT-R-A	Končar-distributivni i specijalni transformatori d.d.	73.313	300 HRK
KOEI-R-A	Končar elektroindustrija d.d.	2.517.053	400 HRK
KOSK-R-A	Končar Sklopna postrojenja d.d.	68.842	300 HRK
KRAS-R-A	Kraš d.d.	1.373.621	400 HRK
KSST-R-A	Kaštelanski staklenici d.d.	113.593	2500 HRK
KTKS-R-A	Koteks d.d.	669.467	100 HRK
LANO-R-A	Laguna Novigrad d.d.	322.790	370 HRK
LEDO-R-A	Ledo d.d.	220.170	380 HRK
LKPC-R-A	Luka Ploče d.d.	222.614	400 HRK
LKRI-R-A	Luka Rijeka d.d.	3.011.830	100 HRK
LLRB-R-A	Lola Ribar d.d.	127.139	400 HRK
LPML-R-A	Lipa Mill d.d.	70.833	720 HRK
LRH-R-A	Liburnia Riviera hoteli d.d.	302.641	3200 HRK
LURA-R-A	Lura d.d.	3.000.000	100 HRK
LVCV-R-A	Lavčević d.d.	465.656	300 HRK
MAGE-R-A	Marin Getaldić d.d.	180.608	50 DEM
MAIS-R-A	MAISTRA d.d.	10.257.393	-
MDKA-R-A	Medika d.d.	30.194	2.000 HRK
MDPL-R-A	Mediteranska plovidba d.d.	156.126	370 HRK
MLNR-R-A	Mlinar d.d.	195.409	400 HRK
MMBA-R-A	Međimurska banka d.d.	319.750	400 HRK
MSLK-R-A	Moslavka d.d.	191.732	200 HRK
NVBA-R-A	Nava banka d.d.	101.610	400 HRK
PABA-R-A	Partner banka d.d.	891.000	100 HRK
PBZ-R-A	Privredna banka Zagreb d.d.	16.660.000	100 HRK
PLAG-R-A	Plava Laguna d.d.	546.318	1800 HRK

Symbol	Company name	Shares outstanding	Nominal value
PLTO-R-A	PLUTO d.d.	87.440	400 HRK
POBA-R-A	Požeška banka d.d.	320.000	200 HRK
PRHN-RA	Prehrana d.d.	129.950	300 HRK
PTKM-R-A	Petrokemija d.d.	2.471.721	400 HRK
RIBA-R-A	Erste & Steiermarkische bank d.d.	13.242.478	100 HRK
RIZO-R-A	RIZ-ODAŠILJAČI d.d.	135.902	100 DEM
SDBA-R-A	BANKA SPLITSKO-DALMATINSKA d.d.	241.178	100 HRK
SLDM-R-A	Slobodna dalmacija d.d.	707.986	100 HRK
SLRS-R-A	Solaris d.d.	726.990	100 DEM
SSNC-R-A	Banka Sonic d.d.	61.800	500 HRK
TANG-R-A	TANG tvornica alata d.d.	113.874	600 HRK
TDZ-R-A	Tvornica duhana Zagreb d.d.	324.808	700 HRK
TEP-R-A	TEP Tvornica elektrotehničkih proizvoda d.d.	377.847	200 HRK
THNK-R-A	Tehnika d.d.	189.460	900 HRK
TISK-R-A	Tisak d.d.	2.386.587	100 HRK
TLM-R-A	TLM Tvornica lakih metala d.d.	1.840.082	300 HRK
TMPO-R-A	TEMPO d.d.	607.952	100 HRK
TNPL-R-A	Tankerska plovidba d.d.	626.385	600 HRK
TOZ-R-A	TOZ Penkala, Tvornica olovaka Zagreb d.d.	246.930	300 HRK
TRFM-R-a	TERRA FIRMA d.d.	36.000	1000 HRK
TSTR-R-A	Tekstilstroj d.d.	114.442	300 HRK
ULPL-R-A	Uljanik plovidba d.d.	187.500	400 HRK
ULJN-R-A	ULJANIK d.d.	2.236.253	300 HRK
UNPP-R-A	Unijapapir d.d.	19.210	1800 HRK
VDKT-R-A	Viadukt d.d.	345.820	300 HRK
VJSN-R-A	Vjesnik d.d.	1.061.683	100 HRK
ZABA-R-A	Zagrebačka banka d.d.	2.873.603	380 HRK
ZAPI-R-A	Zagrebačka pivovara d.d.	620.450	100 DEM
ZLJS-R-A	Željezara Split d.d.	113.216	1200 HRK
ZPKL-R-A	Zagrebačke pekarnice Klara d.d.	283.760	400 HRK
	JDD Market		
	Preferred stocks		
ADRS-P-A	ADRIS GRUPA d.d.	678.410	100 HRK
CRAL-P-A	Croatia Airlines d.d.	17.590	100 HRK
CRAL-P-A1	Croatia Airlines d.d.	6.762	100 HRK
CRAL-P-A2	Croatia Airlines d.d.	13.025	100 HRK
CRAL-P-A3	Croatia Airlines d.d.	7.356	100 HRK
CRAL-P-A4	Croatia Airlines d.d.	6.464	100 HRK
IKBA-P-A	Istarska kreditna banka d.d.	1.513	1100 HRK
KABA-P-A	Karlovačka banka d.d.	10.824	100 HRK
KODT-P-A	Končar-Distributivni i specijalni transformatori d	30.714	300 HRK
KOSK-P-A	Končar Sklopna postrojenja d.d.	40.718	300 HRK
PLAG-P-A	Plava Laguna d.d.	105.000	1000 HRK
SDBA-P-A	BANKA SPLITSKO-DALMATINSKA d.d.	66.680	100 HRK
SSNC-P-A1	Banka Sonic d.d.	18.200	500 HRK
ZABA-P-B	Zagrebačka banka d.d.	11.325	540 HRK
	Parallel Market		
	Common stocks		
AGLG-R-A	AGROLAGUNA d.d.	28.487	2500 HRK
BLVD-R-A	Belvedere d.d.	349.080	300 HRK
BRNK-R-A	Brionka d.d.	132.410	100 DEM

Symbol	Company name	Shares outstanding	Nominal value
CHAG-R-A	CHROMOS AGRO d.d.	125.977	500 HRK
CRLI-R-A	Croatia Lloyd d.d.	145.076	800 HRK
DKST-R-A	DK «STOLARIJA» d.d.	5.484	500 DEM
FRMC-R-A	Farmacija d.d.	16.835	1200 HRK
GHAD-R-A	Grand Hotel Adriatic d.d.	170.800	100 DEM
GKBA-R-A	Gospodarsko-kreditna banka d.d.	627.720	100 HRK
HARG-R-A	Hoteli Argentina d.d.	185.960	300 HRK
HBRL-R-A	Hoteli Brela d.d.	525.270	100 DEM
HIMR-R-A	Imperial d.d.	635.855	200 DEM
HPRK-R-A	Hotel Park d.d.	3.000	3000 HRK
HRBC-R-A	Rabac, ugostiteljstvo i turizam d.d.	1.012.220	100 DEM
HSRE-R-A	Hoteli Srebreno d.d.	482.000	100 HRK
HSTS-R-A	Hotel Split d.d.	36.323	3100 HRK
IKOM-R-A	IKOM Industrija komunalne opreme i mjerila d.d.	78.142	100 DEM
IMES-R-A	Imes d.d.	53.276	100 DEM
IPKK-R-A	IPK KANDIT d.d.	543.490	100 HRK
IPKT-R-A	IPK TVORNICA ULJA ČEPIN d.d.	564.694	100 HRK
JLSA-R-A	Jelsa d.d.	1.057.758	100 HRK
JTMN-R-A	Jadran d.d. Tvornica metalnog namještaja	173.560	300 HRK
KAPI-R-A	Karlovačka pivovara d.d.	511.245	400 HRK
KMKA-R-A	Kemika d.d.	95.259	300 HRK
KODS-R-A	Kordun Slunj d.d.	106.427	100 HRK
KORF-R-A	DOM HOLDING d.d.	8.113.359	100 HRK
KRDN-R-A	Kordun d.d. Karlovac	256.320	100 DEM
KRNA-R-A	Korana d.d.	200.406	200 HRK
LOVI-R-A	Lovinčić d.d.	419.506	200 HRK
MLDN-R-A	Mladina d.d.	96.098	300 HRK
MCML-R-A	MACROMEL d.d.	150.000	10000 HRK
MLDN-R-A	Mladina d.d.	96.098	300 HRK
MRNR-R-A	Mornar d.d.	52.510	100 DEM
MSLK-R-A	Moslavka d.d.	191.732	200 HRK
NACE-R-A	Našicecement d.d.	644.329	400 HRK
PRFC-R-A	PROFICIO d.d.	3.912.908	100 HRK
PSBA-R-A	Primus banka d.d.	101.700	500 HRK
PUNT-R-A	POUNJE Trikotaža d.d.	266.000	100 HRK
PZDL-R-A	Požeška dolina d.d.	120.339	100 DEM
RIVP-R-A	Riviera Holding d.d.	3.653.517	300 HRK
RTKO-R-A	Riječka tvornica konopa d.d.	130.260	200 HRK
SLBA-R-A	Slavonska banka d.d.	284.941	1300 HRK
SLPG-R-A	Solana Pag d.d.	75.846	100 DEM
SNHO-R-A	SN Holding d.d.	3.377.441	100 HRK
SPTH-R-A	Svpetrvs hoteli d.d.	395.148	100 HRK
STBA-R-A	Splitska banka d.d.	3.634.783	100 HRK
SUNH-R-A	Sunčani Hvar d.d.	3.310.971	100 HRK
TRUM-R-A	Trgopromet Umag d.d.	214.072	100 HRK
VLHO-R-A	VALAMAR HOLDING d.d.	3.377.441	-
ZITP-R-A	Žitoproizvod d.d.	109.300	400 HRK
ZLAR-R-A	Zlatni rat d.d.	552.319	100 DEM
ZVZD-R-A	ZVIJEZDA d.d.	100.257	2000 HRK
	Parallel Market		

Symbol	Company name	Shares outstanding	Nominal value
	Closed investments funds		
SLPF-R-A	Slavonski ZIF, d.d.	3.346.418	100 HRK
VLBT-R-A	Velebit – ZIF, d.d.	3.406.550	100 HRK
	Parallel Market		
	Preferred stocks		
GKBA-P-A	Gospodarsko-kreditna banka d.d.	220.000	100 HRK
SPTH-P-A	Svpetrvs hoteli d.d.	45.952	100 HRK

5. Listed Bonds

Symbol	Issuer	Nominal value	Issued volume	Interest	Maturity
Official Market					
AGKR-O-074A	AGROKOR d.d.	1 EUR	230.000.000	11%	3.4.2007
ATGR-O-074A	ATLANTIC GRUPA d.o.o.	1 EUR	15.000.000	5,75%	13.7.2007
BLSC-O-091	Belišće d.d.	1 EUR	8.000.000	5,500%	14.1.2009
BNAI-O-22CA	Bina Istra d.d.	1 EUR	210.000.000	8%	15.12.2022
DAB-O-05CA	State Agency for Deposit Insurance and Bank Rehabilitation	1 EUR	225.000.000	8,375%	19.12.2005
FNOI-D-061A	Fund for the Restitution of Deprived Property	5.11 EUR	422.310	\	1.1.2006
FNOI-D-067A	Fund for the Restitution of Deprived Property	5.11 EUR	422.310	\	1.7.2006
FNOI-D-071A	Fund for the Restitution of Deprived Property	5.11 EUR	422.310	\	1.1.2007
FNOI-D-077A	Fund for the Restitution of Deprived Property	5.11 EUR	422.310	\	1.7.2007
FNOI-D-081A	Fund for the Restitution of Deprived Property	5.11 EUR	422.310	\	1.1.2008
FNOI-D-087A	Fund for the Restitution of Deprived Property	5.11 EUR	422.310	\	1.7.2008
FNOI-D-091A	Fund for the Restitution of Deprived Property	5.11 EUR	422.310	\	1.1.2009
FNOI-D-097A	Fund for the Restitution of Deprived Property	5.11 EUR	422.310	\	1.7.2009
FNOI-D-101A	Fund for the Restitution of Deprived Property	5.11 EUR	422.310	\	1.1.2010
FNOI-D-107A	Fund for the Restitution of Deprived Property	5.11 EUR	422.310	\	1.7.2010
FNOI-D-111A	Fund for the Restitution of Deprived Property	5.11 EUR	422.310	\	1.1.2011
FNOI-D-117A	Fund for the Restitution of Deprived Property	5.11 EUR	422.310	\	1.7.2011
FNOI-D-121A	Fund for the Restitution of Deprived Property	5.11 EUR	422.310	\	1.1.2012
FNOI-D-127A	Fund for the Restitution of Deprived Property	5.11 EUR	422.310	\	1.7.2012
FNOI-D-131A	Fund for the Restitution of Deprived Property	5.11 EUR	422.310	\	1.1.2013
FNOI-D-137A	Fund for the Restitution of Deprived Property	5.11 EUR	422.310	\	1.7.2013
FNOI-D-141A	Fund for the Restitution of Deprived Property	5.11 EUR	422.310	\	1.1.2014
FNOI-D-147A	Fund for the Restitution of Deprived Property	5.11 EUR	422.310	\	1.7.2014
FNOI-D-151A	Fund for the Restitution of Deprived Property	5.11 EUR	422.310	\	1.1.2015
FNOI-D-157A	Fund for the Restitution of Deprived Property	5.11 EUR	422.310	\	1.7.2015
FNOI-D-161A	Fund for the Restitution of Deprived Property	5.11 EUR	422.310	\	1.1.2016
FNOI-D-167A	Fund for the Restitution of Deprived Property	5.11 EUR	422.310	\	1.7.2016
FNOI-D-171A	Fund for the Restitution of Deprived Property	5.11 EUR	422.310	\	1.1.2017
FNOI-D-177A	Fund for the Restitution of Deprived Property	5.11 EUR	422.310	\	1.7.2017
FNOI-D-181A	Fund for the Restitution of Deprived Property	5.11 EUR	422.310	\	1.1.2018
FNOI-D-187A	Fund for the Restitution of Deprived Property	5.11 EUR	422.310	\	1.7.2018
FNOI-D-191A	Fund for the Restitution of Deprived Property	5.11 EUR	422.310	\	1.1.2019
FNOI-D-197A	Fund for the Restitution of Deprived Property	5.11 EUR	422.310	\	1.7.2019

Symbol	Issuer	Nominal value	Issued volume	Interest	Maturity
GDKC-O-116A	City of Koprivnica	1 HRK	60.000.000	6,5%	29.6.2011
GDZD-O-119A	City of Zadar	1 EUR	18.500.00	5,5%	1.9.2011
HBOR-O-112A	Croatian bank for reconstruction and development	1 EUR	300.000.000	4,875%	11.2.2011
HYBA-O-086A	Hypo Alpe-Adria Bank d.d.	1 HRK	150.000.000	6.500%	6.6.2008
PLVA-O-115A	PLIVA d.d.	1 EUR	75.000.000	5,750%	12.5.2011
PODR-O-072A	Podravka d.d.	1 EUR	27.000.000	5,000%	20.2.2007
RHMF-O-077A	Republic of Croatia	1 EUR	400.000.000	3,875%	7.7.2007
RHMF-O-085A	Republic of Croatia	1 HRK	1.000.000.000	6.125%	28.5.2008
RHMF-O-08CA	Republic of Croatia	1 EUR	200.000.000	6,875%	14.12.2008
RHMF-O-103A	Republika Hrvatska	1 HRK	3.000.000.000	6,750%	8.3.2010
RHMF-O-125A	Republic of Croatia	1 EUR	500.000.000	6.875%	23.5.2012
RHMF-O-142A	Republic of Croatia	1 EUR	650.000.000	5,500%	10.2.2014
RHMF-O-157A	Republic of Croatia	1 EUR	350.000.000	4,250%	14.7.2015
RHMF-O-19BA	Republic of Croatia	1 EUR	200.000.000	5,375%	29.11.2019

6. Listed Certificates

Symbol	Issuer	Nominal value	Issued volume
RHMJ-A-A	Republic of Croatia, Ministry of Construction	1 HRK	400.000.000
RHMF-A-A	Republic of Croatia, Ministry of Finance	1 HRK	644.750.000

7. Listed Commercial Papers

Symbol	Issuer	Nominal value	Issued volume
Regular Market			
JDRA-M-628A	Jadranka d.d.	1 HRK	10.000.000
JDRA-M-638A	Jadranka d.d.	1 HRK	10.000.000
MDKA-M-087A	Medika d.d.	1 EUR	16.500.000

8. Methodological remarks

- 1) High is the highest trading price for the share in the selected period of time.
- 2) Low is the lowest trading price for the share in the selected period of time.
- 3) Last is the price of the last trade for the share in the selected period of time.
- 4) Market capitalization of the whole Exchange is calculated by multiplying the last price and the number of outstanding shares. If the share was not traded in the last month, one half of the market capitalization is added to the market capitalization of the whole Exchange. If the share was not traded in the last three months, only one quarter of the market capitalisation is added to the market capitalization of the whole Exchange.
- 5) The performance of shares is calculated with the last prices in the compared periods.
- 6) For the price curve daily closing prices are used.
- 7) Reported trades are trades with bonds greater then 3,000,000 HRK in accordance with the Zagreb Stock Exchange Rules.
- 8) Institutional trades are trades reported to the Zagreb Stock Exchange by intitutional investors in accordance with Securities Law.