



ZAGREBAČKA BURZA
THE ZAGREB STOCK EXCHANGE

Trading Summary
First quarter of 2005

Zagreb, April 2005

The Zagreb Stock Exchange information

1. INTERNET

<http://www.zse.hr/>

2. REUTERS

ZAGSTOCK, ZAGSTOCL - daily shares prices

ZAGSTOCLM - daily bonds prices

SEZI – daily certificates prices

.CRBEX - CROBEX index

.CRBEX (chain) - CROBEX index constituents-by RIC code

This report or any part thereof may be reprinted, copied or redistributed in any way only with prior written permission and full credit.

The information contained herein is compiled and collected with care, but total accuracy and/or completeness is not guaranteed by the Zagreb Stock Exchange (ZSE). This publication is issued with the express condition to which everyone purchasing and making use thereof assents that no liability shall be incurred by ZSE. This publication is issued for information purposes only and is not to be construed in any way as an invitation to purchase or sell any security mentioned herein. ZSE recommends to any potential investor to seek professional advice before investing.

Copyright © 2005 by The Zagreb Stock Exchange
Zagreb
Ksaver 200
Croatia

All rights reserved.

Contents:

- 1. TRADING STATISTICS 1**
 - 1.1. GENERAL CHARACTERISTICS 1
 - 1.2. TRADING OVERVIEW BY MONTH..... 2
 - 1.3. SHARES PERFORMANCE 4
 - 1.4. BONDS PERFORMANCE 6
 - 1.5. STOCKS WITH THE LARGEST MARKET CAPITALIZATION 8
 - 1.6. MOST ACTIVE STOCKS BY TURNOVER..... 8
 - 1.7. BEST PERFORMING STOCKS..... 9
 - 1.8. UNDERPERFORMING STOCKS 9
 - 1.9. FINANCIAL RATIOS 9
 - 1.10. TOP 10 MEMBERS BY EQUITY TURNOVER..... 10
 - 1.11. TOP 10 MEMBERS BY BONDS TURNOVER 10
- 2. MAJOR EVENTS 10**
- 3. PRICES AND VOLUMES FOR THE MOST ACTIVE STOCKS..... 12**
- 4. LISTED SHARES 15**
- 5. LISTED BONDS 19**
- 6. LISTED CERTIFICATES..... 20**
- 7. LISTED COMMERCIAL PAPERS 20**
- 8. METHODOLOGICAL REMARKS 21**

1. Trading statistics

1.1. General characteristics

(Turnover and Market Capitalization in millions of Kunas)

	Fourth quarter of 2004	First quarter of 2005	% change
Regular turnover:			
Equities	1.119.883.619	1.837.341.344	64,1
Bonds	181.249.238	103.310.499	-43,0
Reported turnover*	983.672.609	769.458.585	-21,8
Institutional turnover**	6.437.395.429	5.139.349.297	-20,2
Total	8.723.311.583	7.849.459.725	-10,0
Regular volume:			
Equities	3.815.509	4.115.317	7,9
Bonds	55.209.984	61.766.504	11,9
Reported volume*	143.909.465	231.770.000	61,1
Institutional volume**	1.340.611.855	1.579.966.876	17,9
Total	1.545.063.976	1.877.618.697	21,5
CROBEX[©]	1.565,8	1.843,1	17,7
CROBIS[©]	102,1658	101,8664	-0,3
Total number of trades	21.658	37.307	72,3
Number of securities traded	129	132	2,3
Market Capitalization			
Equities	61.734,4	69.551,8	12,7
Bonds	24.559,5	24.750,5	0,8
Total	86.293,9	94.302,3	9,3
Number of trading days	63	61	-3,2
Number of listed shares			
Official Market	4	4	0,0
JDD Market	133	128	-3,8
Parallel Market	46	53	15,2
Daily average:			
Turnover	138.465.263	128.679.668	-7,1
Volume	24.524.825	30.780.634	25,5
Number of trades	344	612	77,9
Exchange rate at the end of period	5,636883	5,744312	1,9

*Reported trades are trades with bonds greater than 3,000,000 HRK in accordance with the Zagreb Stock Exchange Rules.

**Institutional trades are trades reported to the Exchange by institutional investors in accordance with Securities Law.

1.2. Trading Overview by Month

(Turnover and Market Capitalization in millions of Kunas)

	January	February	March
Regular turnover:			
Equities	623.294.599	780.482.505	433.564.240
Bonds	36.815.490	37.685.652	28.809.356
Reported turnover*	216.330.935	270.974.372	282.153.278
Institutional turnover**	1.359.448.373	1.648.984.715	2.130.916.209
Total	2.235.889.398	2.738.127.245	2.875.443.082
Regular volume:			
Equities	1.470.948	1.717.264	927.105
Bonds	15.822.513	32.822.196	13.121.795
Reported volume*	35.150.000	42.120.000	154.500.000
Institutional volume**	285.701.500	361.664.300	932.601.076
Total	338.144.961	438.323.760	1.101.149.976
CROBEX[®]	1.923,5	2.085,5	1.843,1
CROBIS[®]	102,6598	102,0353	101,8664
Total number of trades	14.602	13.708	8.997
Number of securities traded	86	115	87
Market Capitalization			
Equities	73.268,8	78.166,9	69.551,8
Bonds	23.411,8	22.375,4	24.750,5
Total	96.680,6	100.542,3	94.302,3
Number of trading days	20	20	21
Daily average:			
Turnover	111.794.470	136.906.362	136.925.861
Volume	16.907.248	21.916.188	52.435.713
Number of trades	730	685	428

*Reported trades are trades with bonds greater than 3,000,000 HRK in accordance with the Zagreb Stock Exchange Rules.

**Institutional trades are trades reported to the Exchange by institutional investors in accordance with Securities Law.

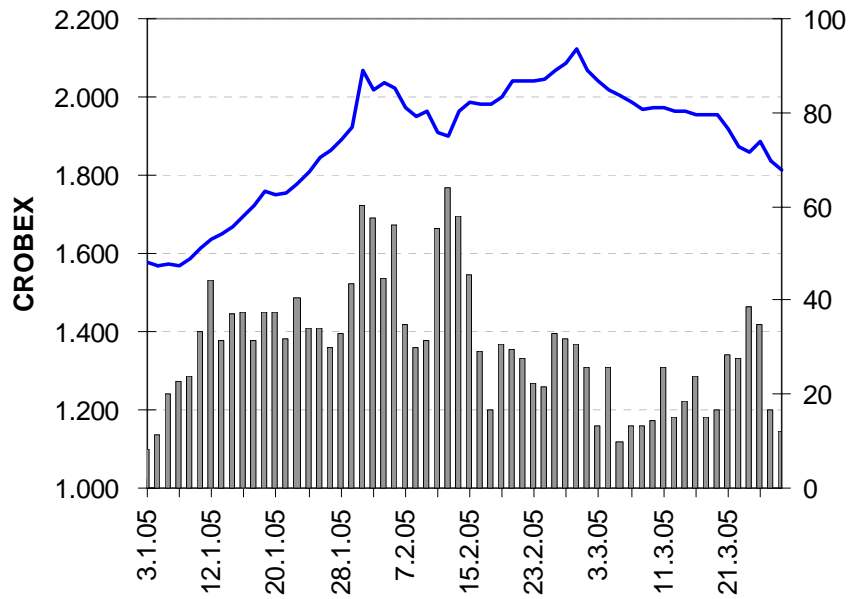


Chart 1: Zagreb Stock Exchange equity index CROBEX[®] and equity turnover

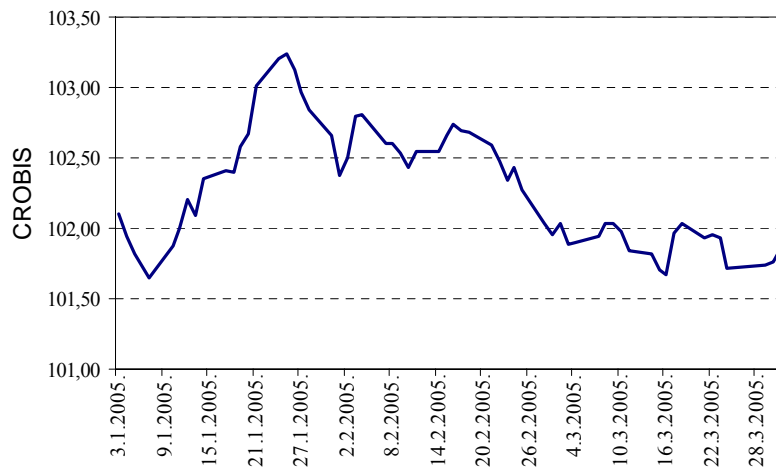


Chart 2: Zagreb Stock Exchange bond index CROBIS[®]

1.3. Shares performance

(All prices and turnover in Kunas, market capitalization in millions of Kunas)

	High	Low	Last	Average	Date	Net Change	Volume	Turnover	Mkt Cap
Official Market									
CROS-P-A	5.400,00	4.100,00	4.800,00	4.938,07	30.3.2005	17,1	1.985	9.802.072	42,0
CROS-R-A	6.075,00	4.250,00	5.800,00	5.227,92	31.3.2005	31,8	2.321	12.134.002	1.784,1
PLVA-R-A	447,00	330,00	335,00	386,00	31.3.2005	-8,0	519.954	200.702.951	6.228,5
PODR-R-A	365,00	229,00	269,00	302,86	31.3.2005	12,6	728.794	220.723.965	1.458,0
JDD Market									
ADHT-R-A	120,00	120,00	120,00	120,00	1.2.2005	0,0	110	13.200	40,5
ADRS-P-A	5.500,00	3.499,00	4.151,00	4.598,60	31.3.2005	18,6	104.279	479.537.646	2.816,1
ANTA-R-A	7.500,00	5.900,00	7.500,00	6.568,89	24.1.2005	33,9	395	2.594.710	646,5
ARNT-R-A	275,00	121,00	230,00	206,07	31.3.2005	90,9	60.317	12.429.646	502,0
ATLS-R-A	100,00	59,98	84,50	84,39	31.3.2005	50,2	87.126	7.352.888	161,4
ATPL-R-A	920,00	480,00	680,00	709,08	31.3.2005	36,0	157.811	111.900.787	926,3
AUHR-R-A	5.000,00	5.000,00	5.000,00	5.000,00	22.2.2005	0,0	1	5.000	89,4
BD62-R-A	300,00	147,00	269,00	236,21	31.3.2005	84,2	50.673	11.969.586	202,3
BDMR-R-A	1.000,00	923,99	1.000,00	994,38	31.3.2005	8,2	73	72.590	99,3
BLSC-R-A	400,00	286,00	335,00	330,32	31.3.2005	15,9	31.201	10.306.277	390,0
CEBA-R-A	360,00	300,00	360,00	346,43	30.3.2005	20,0	1.049	363.400	79,8
DABA-R-A	824,00	600,00	600,00	793,99	23.3.2005	-22,6	12.835	10.190.812	1.365,8
DLKV-R-A	480,01	260,00	350,00	380,30	31.3.2005	34,6	88.841	33.786.212	802,8
DLMC-R-A	700,00	700,00	700,00	700,00	27.1.2005	0,0	24	16.800	1.190,0
ELKA-R-A	150,00	102,01	110,00	122,17	31.3.2005	8,8	32.528	3.974.045	174,7
ELPR-R-A	349,99	229,00	285,00	292,35	31.3.2005	23,9	54.298	15.873.819	95,4
ERNT-R-A	2.300,00	1.495,00	1.900,00	2.057,49	29.3.2005	28,4	26.619	54.768.430	2.530,1
EXCL-R-A	170,00	65,00	135,00	99,85	22.3.2005	107,7	3.678	367.255	64,1
EXPD-R-A	270,00	270,00	270,00	270,00	12.1.2005	-10,0	100	27.000	42,9
FNVC-R-A	300,00	220,00	248,00	250,67	31.3.2005	12,7	11.964	2.999.067	153,2
FRNK-R-A	1.700,00	1.000,00	1.230,00	1.291,60	30.3.2005	11,8	7.271	9.391.259	525,4
GHPA-R-A	400,00	400,00	400,00	400,00	15.2.2005	300,0	40	16.000	56,0
HDEL-R-A	110,00	105,00	110,00	105,54	25.1.2005	0,0	46	4.855	68,6
HICZ-R-B	400,00	270,00	394,42	365,08	24.3.2005	64,3	444	162.095	343,1
HMAM-R-A	155,00	125,00	150,00	143,76	24.3.2005	24,0	5.776	830.360	167,9
HRDH-R-A	150,00	118,02	138,94	139,33	31.3.2005	19,8	16.114	2.245.123	117,1
HUPZ-R-A	1.000,00	451,00	750,00	766,96	31.3.2005	50,0	12.178	9.340.064	385,0
IGH-R-A	2.999,00	1.601,00	1.876,00	2.282,82	31.3.2005	17,3	21.923	50.046.181	297,5
INDG-R-A	525,00	415,01	460,01	481,73	24.2.2005	18,0	1.644	791.965	57,5
ISTT-R-A	250,00	120,00	205,00	184,36	31.3.2005	73,7	154.167	28.422.256	958,4
JDBA-R-A	5.500,00	3.809,00	4.453,00	4.448,67	31.3.2005	17,0	2.184	9.715.886	162,1
JDPL-R-A	499,99	250,00	275,01	338,25	31.3.2005	-19,1	54.315	18.372.300	450,1
JDTT-R-A	199,00	130,00	184,17	165,77	15.3.2005	31,7	35.858	5.944.338	787,2
JMNC-R-A	19.000,00	16.500,00	17.000,00	17.955,68	22.3.2005	30,8	34	610.493	376,1
JNAF-R-A	2.570,00	1.380,00	1.900,00	2.073,92	23.3.2005	25,8	10.257	21.272.246	1.411,4
KABA-R-A	177,50	121,00	121,00	144,20	23.3.2005	-13,6	12.641	1.822.773	81,0
KBZ-R-A	92,50	79,00	92,00	89,75	24.3.2005	-8,0	10.770	966.607	121,4
KNZM-R-A	3.000,00	2.500,00	3.000,00	2.707,53	31.3.2005	20,0	266	720.202	378,4
KODT-P-A	500,00	390,00	416,10	464,00	23.3.2005	4,0	2.293	1.063.947	12,8
KODT-R-A	650,00	500,00	540,00	542,25	23.3.2005	20,0	958	519.480	39,6
KOEI-R-A	310,00	154,00	210,00	229,53	31.3.2005	35,5	371.007	85.156.110	528,6

	High	Low	Last	Average	Date	Net Change	Volume	Turnover	Mkt Cap
KRAS-R-A	580,00	345,00	440,00	448,68	31.3.2005	27,5	67.216	30.158.627	604,4
LLRB-R-A	200,00	122,11	152,00	166,57	24.3.2005	25,5	3.715	618.818	19,3
LPML-R-A	100,00	100,00	100,00	100,00	22.3.2005	33,3	100	10.000	7,1
LRH-R-A	1.950,00	1.950,00	1.950,00	1.950,00	8.2.2005	25,8	10	19.500	590,1
LURA-R-A	350,00	240,00	304,00	304,55	30.3.2005	6,7	1.847	562.495	912,0
MAIS-R-A	165,00	140,00	140,00	154,64	24.3.2005	-15,2	410	63.401	1.436,0
MDKA-R-A	8.300,00	7.505,10	7.800,00	7.981,74	31.3.2005	-6,0	3.515	28.055.830	235,5
MMBA-R-A	650,00	506,00	602,05	535,50	30.3.2005	20,4	647	346.471	192,5
PBZ-R-A	700,00	485,03	550,00	580,47	31.3.2005	9,8	14.156	8.217.144	9.163,0
PLAG-R-A	2.950,00	1.880,00	2.398,99	2.451,35	31.3.2005	27,9	5.458	13.379.448	1.310,6
POBA-R-A	220,00	100,00	200,00	183,54	22.3.2005	57,5	106.741	19.590.929	64,0
PTKM-R-A	115,00	70,00	77,75	86,66	31.3.2005	-2,8	706.406	61.220.420	192,2
RIBA-R-A	375,00	280,00	350,00	328,16	31.3.2005	20,7	14.641	4.804.571	4.634,9
SSNC-P-A1	500,01	414,00	500,00	465,27	22.3.2005	25,0	104	48.388	9,1
TDZ-R-A	2.120,00	2.022,72	2.100,00	2.081,08	22.3.2005	-5,6	216	449.513	682,1
THNK-R-A	1.800,00	1.201,00	1.750,00	1.622,24	31.3.2005	34,6	2.558	4.149.686	331,6
TNPL-R-A	4.010,00	1.899,99	3.200,00	3.064,52	31.3.2005	52,4	31.390	96.195.201	2.004,4
ULPL-R-A	2.799,00	1.400,00	2.000,00	2.026,48	31.3.2005	36,1	10.137	20.542.467	245,5
ULJN-R-A	290,00	80,00	80,00	100,61	31.3.2005	-60,0	1.721	173.153	178,9
VDKT-R-A	450,00	201,01	310,00	301,50	29.3.2005	47,6	18.329	5.526.233	107,2
ZABA-P-B	4.000,00	2.520,00	3.800,00	3.438,90	22.3.2005	52,0	395	1.358.366	43,0
ZABA-R-A	4.900,00	3.300,00	3.999,00	3.976,06	31.3.2005	21,2	3.816	15.172.629	11.491,5
ZAPI-R-A	4.100,00	3.340,00	3.340,00	3.996,57	31.3.2005	-14,4	1.337	5.343.420	2.072,3
Parallel Market									
CHAG-R-A	1.390,00	1.390,00	1.390,00	1.390,00	22.2.2005	49,5	5	6.950	175,1
GKBA-P-A	140,00	81,00	100,00	109,35	23.3.2005	25,0	2.569	280.910	22,0
HBRL-R-A	170,00	168,00	170,00	169,22	8.3.2005	70,0	185	31.306	89,3
HIMR-R-A	242,00	140,00	242,00	205,11	21.3.2005	42,4	3.289	674.594	153,9
HRBC-R-A	306,00	155,00	240,00	246,53	30.3.2005	54,8	34.464	8.496.391	242,9
KAPI-R-A	1.900,00	1.713,10	1.713,10	1.738,02	23.2.2005	-5,0	15	26.070	875,8
KODS-R-A	25,00	10,00	25,00	20,35	17.3.2005	150,0	1.099	22.365	2,7
KORF-R-A	176,00	117,50	150,00	168,61	30.3.2005	32,7	77.872	13.129.662	1.217,0
MLDN-R-A	300,00	300,00	300,00	300,00	13.1.2005	275,0	15	4.500	28,8
PRFC-R-A	90,00	72,00	82,00	82,51	23.2.2005	12,3	1.786	147.360	320,9
PUNT-R-A	70,00	50,00	70,00	57,93	31.3.2005	40,0	3.021	174.997	18,6
RIVP-R-A	375,00	221,10	319,90	308,56	31.3.2005	45,4	48.296	14.902.318	1.168,8
SLBA-R-A	2.100,00	1.830,01	2.000,00	2.008,59	31.3.2005	5,8	895	1.797.684	569,9
SLPF-R-A	64,00	48,90	51,00	61,10	23.3.2005	10,9	32.375	1.978.139	170,7
SNHO-R-A	255,00	170,00	205,00	214,74	31.3.2005	20,6	41.722	8.959.557	692,4
SUNH-R-A	129,00	82,05	119,00	107,61	31.3.2005	46,9	142.849	15.371.472	394,0
VLBT-R-A	12,50	12,50	12,50	12,50	20.1.2005	-10,1	338	4.225	42,6
ZITP-R-A	190,00	190,00	190,00	190,00	1.3.2005	0,0	469	89.110	20,8
ZLAR-R-A	300,00	93,40	192,00	184,55	31.3.2005	92,0	32.026	5.910.323	106,0

1.4. Bonds performance

(All prices in % of par value, turnover in Kunas)

	High	Low	Last	Date	Volume	Turnover
Regular trades						
DAB-O-05CA	104,80	104,15	104,43	8.3.2005	2.013.000	15.680.122
FNOI-D-057A	96,45	96,45	96,45	4.2.2005	140.014	10.159
FNOI-D-061A	92,18	92,18	92,18	4.2.2005	140.014	9.709
FNOI-D-067A	88,16	88,16	88,16	4.2.2005	140.014	9.286
FNOI-D-071A	84,26	84,26	84,26	4.2.2005	140.014	8.875
FNOI-D-077A	80,58	80,58	80,58	4.2.2005	140.014	8.488
FNOI-D-081A	77,02	77,02	77,02	4.2.2005	140.014	8.113
FNOI-D-087A	73,64	73,64	73,64	4.2.2005	140.014	7.757
FNOI-D-091A	70,38	70,38	70,38	4.2.2005	140.014	7.413
FNOI-D-097A	67,31	67,31	67,31	4.2.2005	140.014	7.090
FNOI-D-101A	64,33	64,33	64,33	4.2.2005	140.014	6.776
FNOI-D-107A	61,53	61,53	61,53	4.2.2005	140.014	6.481
FNOI-D-111A	58,81	58,81	58,81	4.2.2005	140.014	6.195
FNOI-D-117A	56,24	56,24	56,24	4.2.2005	140.014	5.924
FNOI-D-121A	53,75	53,75	53,75	4.2.2005	140.014	5.662
FNOI-D-127A	51,40	51,40	51,40	4.2.2005	140.014	5.414
FNOI-D-131A	49,12	49,12	49,12	4.2.2005	140.014	5.174
FNOI-D-137A	46,98	46,98	46,98	4.2.2005	140.014	4.948
FNOI-D-141A	44,90	44,90	44,90	4.2.2005	140.014	4.729
FNOI-D-147A	42,95	42,95	42,95	4.2.2005	140.014	4.524
FNOI-D-151A	41,04	41,04	41,04	4.2.2005	140.014	4.323
FNOI-D-157A	39,26	39,26	39,26	4.2.2005	140.014	4.135
FNOI-D-161A	37,52	37,52	37,52	4.2.2005	140.014	3.952
FNOI-D-167A	35,87	35,87	35,87	4.2.2005	140.014	3.778
FNOI-D-171A	34,29	34,29	34,29	4.2.2005	140.014	3.612
FNOI-D-177A	32,79	32,79	32,79	4.2.2005	140.014	3.454
FNOI-D-181A	31,34	31,34	31,34	4.2.2005	140.014	3.301
FNOI-D-187A	29,97	29,97	29,97	4.2.2005	140.014	3.157
FNOI-D-191A	28,65	28,65	28,65	4.2.2005	140.014	3.018
FNOI-D-197A	27,40	27,40	27,40	4.2.2005	140.014	2.886
HYBA-O-086A	101,00	100,90	100,90	1.2.2005	570.000	575.200
PLVA-O-115A	100,45	99,65	99,65	14.2.2005	96.500	723.479
PODR-O-072A	100,25	100,25	100,25	19.1.2005	30.000	225.865
RHMF-O-077A	101,55	101,55	101,55	24.1.2005	60.000	457.067
RHMF-O-085A	102,70	100,15	101,65	31.3.2005	43.136.768	43.804.491
RHMF-O-08CA	111,35	110,60	111,35	16.2.2005	140.800	1.180.139
RHMF-O-103A	103,05	101,50	103,05	24.3.2005	7.741.705	7.938.918
RHMF-O-125A	115,80	113,30	114,05	23.3.2005	1.448.975	12.767.630
RHMF-O-142A	108,00	105,00	106,20	31.3.2005	1.349.350	10.917.708
RHMF-O-19BA	106,55	104,35	104,35	16.3.2005	1.119.000	8.871.550
TOTAL					61.766.504	103.310.499
Reported trades*						
DAB-O-05CA	104,50	103,90	104,40	17.2.2005	2.620.000	20.492.421
RHMF-O-077A	101,50	100,20	100,70	22.3.2005	11.500.000	86.869.996
RHMF-O-085A	102,00	100,25	100,25	3.3.2005	30.000.000	30.317.500
RHMF-O-08CA	112,25	110,60	110,60	1.3.2005	1.500.000	12.560.240
RHMF-O-103A	103,20	102,40	103,20	30.3.2005	126.500.000	129.998.750

	High	Low	Last	Date	Volume	Turnover
RHMF-O-125A	116,35	114,65	114,75	17.3.2005	19.500.000	170.022.430
RHMF-O-142A	108,25	105,30	105,30	14.3.2005	20.500.000	164.088.689
RHMF-O-19BA	106,15	102,80	104,65	22.3.2005	19.650.000	155.108.560
TOTAL					231.770.000	769.458.585
Institutional trades**						
ATGR-O-077A	100,40	100,40	100,40	12.1.2005	1.000.000	7.588.282
BLSC-O-091A	99,85	99,74	99,85	2.3.2005	1.640.000	12.304.940
BNAI-O-22CA	116,13	115,05	116,13	18.1.2005	3.362.000	29.399.974
DAB-O-05CA	105,00	103,55	103,95	30.3.2005	18.082.276	140.978.907
GDKC-O-116A	100,00	98,70	100,00	30.3.2005	17.500.000	16.142.750
GDZD-O-119A	103,30	102,90	102,90	14.3.2005	2.819.000	21.872.836
HYBA-O-086A	101,20	99,60	101,00	30.3.2005	19.430.000	19.568.890
PLVA-O-115A	100,40	99,40	99,70	29.3.2005	2.506.500	18.841.827
PODR-O-072A	100,20	99,30	100,10	24.3.2005	9.665.000	72.355.555
RHMF-O-077A	101,65	99,60	100,30	31.3.2005	72.185.500	545.337.351
RHMF-O-085A	102,30	100,10	101,40	30.3.2005	432.347.800	438.162.788
RHMF-O-08CA	112,40	110,15	111,10	22.3.2005	27.073.000	226.088.299
RHMF-O-103A	103,40	100,01	102,90	31.3.2005	606.830.000	621.240.110
RHMF-O-125A	117,05	114,25	114,30	24.3.2005	92.482.500	801.636.037
RHMF-O-142A	108,35	104,90	105,55	30.3.2005	145.388.500	1.162.746.975
RHMF-O-19BA	106,30	99,72	104,00	31.3.2005	127.654.800	1.005.083.774
TOTAL					1.579.966.876	5.139.349.297
BONDS TOTAL					1.873.503.380	6.012.118.381

*Reported trades are trades with bonds greater then 3,000,000 HRK in accordance with the Zagreb Stock Exchange Rules.

**Institutional trades are trades reported to the Exchange by institutional investors in accordance with Securities Law.

1.5. Stocks with the largest Market Capitalization

(Market capitalization in millions of Kunas)

	Symbol	Market Cap. 31.3.2005.	Percentage (%)	Cumulative percentage (%)
1	ZABA-R-A	11.491,5	16,5	16,5
2	PBZ-R-A	9.163,0	13,2	29,7
3	PLVA-R-A	6.228,5	9,0	38,7
4	RIBA-R-A	4.634,9	6,7	45,3
5	ADRS-P-A	2.816,1	4,0	49,4
6	ERNT-R-A	2.530,1	3,6	53,0
7	ZAPI-R-A	2.072,3	3,0	56,0
8	TNPL-R-A	2.004,4	2,9	58,9
9	CROS-R-A	1.784,1	2,6	61,4
10	PODR-R-A	1.458,0	2,1	63,5
	Others	25.368,9	36,5	100,0
	Total	69.551,8		

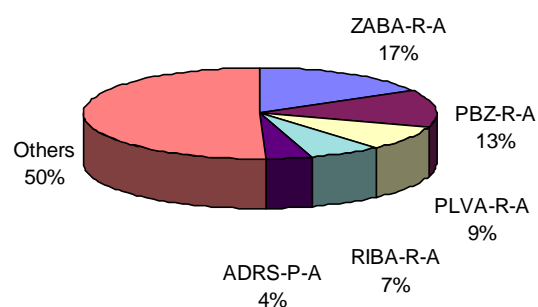


Chart 3: Market Capitalization

1.6. Most active stocks by turnover

(Turnover in Kunas)

	Symbol	Turnover	Percentage (%)	Cumulative percentage (%)
1	ADRS-P-A	479.537.646	26,1	26,1
2	PODR-R-A	220.723.965	12,0	38,1
3	PLVA-R-A	200.702.951	10,9	49,0
4	ATPL-R-A	111.900.787	6,1	55,1
5	TNPL-R-A	96.195.201	5,2	60,4
6	KOEI-R-A	85.156.110	4,6	65,0
7	PTKM-R-A	61.220.420	3,3	68,3
8	ERNT-R-A	54.768.430	3,0	71,3
9	IGH-R-A	50.046.181	2,7	74,0
10	DLKV-R-A	33.786.212	1,8	75,9
	Others	443.303.440	24,1	100,0
	Total	1.837.341.344		

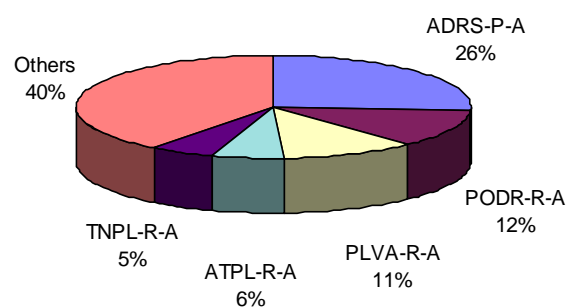


Chart 4: Distribution of equity turnover

1.7. Best performing stocks

Symbol	Fourth quarter of 2004	First quarter of 2005	% change
GHPA-R-A	100,00	400,00	300,0
MLDN-R-A	80,00	300,00	275,0
KODS-R-A	10,00	25,00	150,0
EXCL-R-A	65,00	135,00	107,7
ZLAR-R-A	100,00	192,00	92,0
ARNT-R-A	120,50	230,00	90,9
BD62-R-A	146,00	269,00	84,2
ISTT-R-A	118,00	205,00	73,7
HBRL-R-A	100,00	170,00	70,0
HICZ-R-B	240,00	394,42	64,3
POBA-R-A	127,00	200,00	57,5
HRBC-R-A	155,00	240,00	54,8
TNPL-R-A	2.100,00	3.200,00	52,4
ZABA-P-B	2.500,07	3.800,00	52,0

1.8. Underperforming stocks

Symbol	Fourth quarter of 2004	First quarter of 2005	% change
ULJN-R-A	200,00	80,00	-60,0
DABA-R-A	775,00	600,00	-22,6
JDPL-R-A	340,00	275,01	-19,1
MAIS-R-A	165,00	140,00	-15,2
ZAPI-R-A	3.900,00	3.340,00	-14,4
KABA-R-A	140,00	121,00	-13,6
VLBT-R-A	13,90	12,50	-10,1
EXPD-R-A	300,00	270,00	-10,0
KBZ-R-A	99,98	92,00	-8,0
PLVA-R-A	364,00	335,00	-8,0
MDKA-R-A	8.300,00	7.800,00	-6,0
TDZ-R-A	2.225,00	2.100,00	-5,6
KAPI-R-A	1.804,00	1.713,10	-5,0
PTKM-R-A	80,00	77,75	-2,8

1.9. Financial ratios

(Price, earnings and dividends in Kunas)

Symbol	Price 31.3.2005	Earnings per share	P/E ratio	Dividend for 2003	Dividend yield
CROS-R-A	5.800,00	325,45	17,8	128	2,2%
PLVA-R-A	335,00	44,68	7,5	16	4,8%
PODR-R-A	269,00	17,84	15,1	0	0,0%

1.10. Top 10 Members by Equity Turnover

Rang	Member
1	Zagrebačka banka d.d.
2	Erste vrijednosni papiri d.o.o.
3	Fima vrijednosnice d.o.o.
4	Auctor d.o.o.
5	Raiffeisenbank Austria d.d.
6	InterFinance d.o.o.
7	Ilirika vrijednosni papiri d.o.o.
8	Hypo Alpe-Adria-Bank d.d.
9	Privredna banka Zagreb d.d.
10	I.C.F. d.o.o.

1.11. Top 10 Members by Bonds Turnover

Rang	Member
1	Interkapital vrijednosni papiri d.o.o
2	I.C.F. d.o.o
3	Erste vrijednosni papiri d.o.o
4	Raiffeisenbank Austria d.d.
5	Privredna banka Zagreb d.d.
6	Zagrebačka banka d.d.
7	CROBA vrijednosnice d.o.o
8	HVB Splitska banka d.d.
9	Fima vrijednosnice d.o.o
10	TO ONE brokeri d.o.o

2. Major events

- 31.3.2005 CROATIA osiguranje d.d. released its financial results for the year 2004.
- 15.3.2005 JADRAN-TURIST ROVINJ d.d. and ANITE d.d. common and preferred stocks (ZSE symbols: JDTT-R-A, ANTA-R-A i ANTA-P-A) were delisted from Market JDD.
- 15.3.2005 MAISTRA d.d. common stocks (ZSE symbol: MAIS-R-A) were listed on Market JDD.
- 10.3.2005 Hypo Alpe-Adria-Grupa released its financial results for the year 2004.
- 9.3.2005 Government bond due on March 8, 2010 (ZSE symbol: RHMF-O-103A) started trading in Official Market. Nominal value of the issue is 3 billion Kunas.
- 8.3.2005 Vjesnik d.d share capital is increased to amount of 106.168.300 Kunas.
- 2.3.2005 PLIVA d.d. released its financial results for the year 2004.
- 2.3.2005 Tekstilni kombinat Zagreb d.d. common stocks (ZSE symbol: TKZG-R-A) were delisted from Market JDD.
- 2.3.2005 Moslavka d.d. common stocks (ZSE symbol: MSLK-R-A) were delisted from Market JDD.
- 2.3.2005 Hoteli Srebreno d.d. common stocks (ZSE symbol: HSRE-R-A) were delisted from Market JDD.

- 8.2.2005 ZVIJEZDA d.d. (ZSE symbol: ZVZD-R-A), IPK TVORNICA ULJA ČEPIN d.d. (ZSE symbol: IPKT-R-A) and IPK KANDIT d.d. (ZSE symbol: IPKK-R-A) common stocks were listed on Parallel Market.
- 8.2.2005 Pounje d.d. common stocks (ZSE symbol: PUNT-R-A) were listed on Parallel Market.
- 7.2.2005 On general assemblies of companies Anita d.d. and Jadran-turist d.d. is approved merger of these two companies into new company named Maistra d.d.
- 4.2.2005 Hoteli Srebreno d.d. HSRE-R-A common stocks (ZSE symbol: HSRE-R-A) were listed on Market JDD.
- 3.2.2005 Ilirija d.d. share capital is increased to amount of 97.260.540 Kunas.
- 26.1.2005 Hypo Alpe-Adria-Bank d.d. share capital is increased to amount of 1.296.762.000 Kunas
- 20.1.2005 Kerametal d.d. common stocks (ZSE symbol: KRMT-R-A) were delisted from Market JDD.
- 17.1.2005 Belišće d.d. corporate bonds due on January 14, 2009. (ZSE symbol BLSC-O-091A) started trading in Official Market. Nominal value of the issue is 8 million Euros.

3. Prices and volumes for the most active stocks

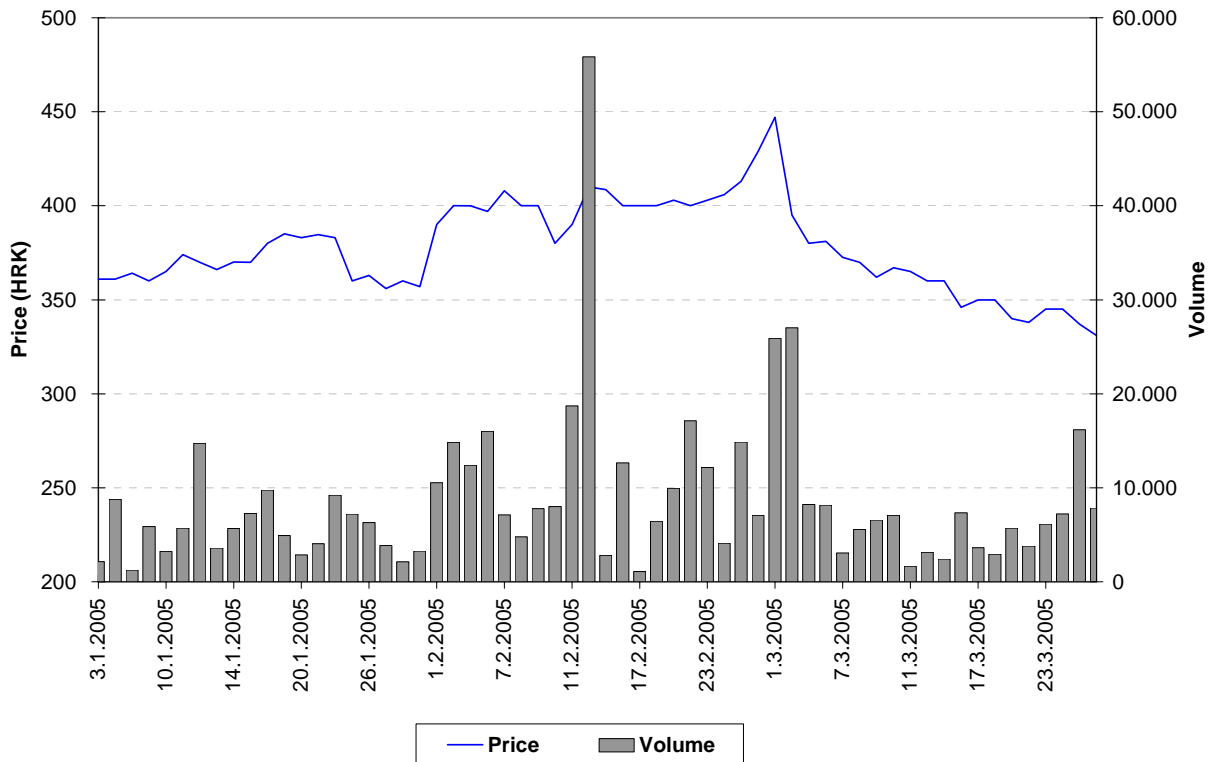


Chart 5: Pliva d.d.

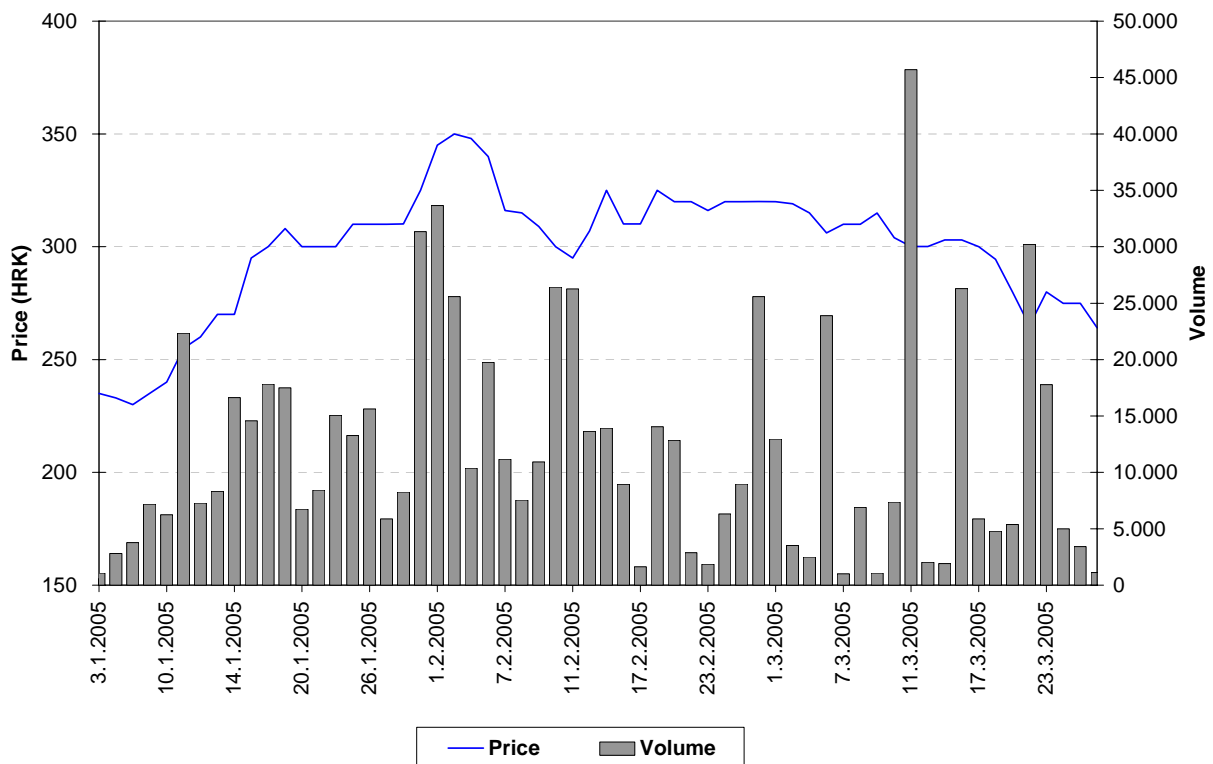


Chart 6: Podravka d.d.

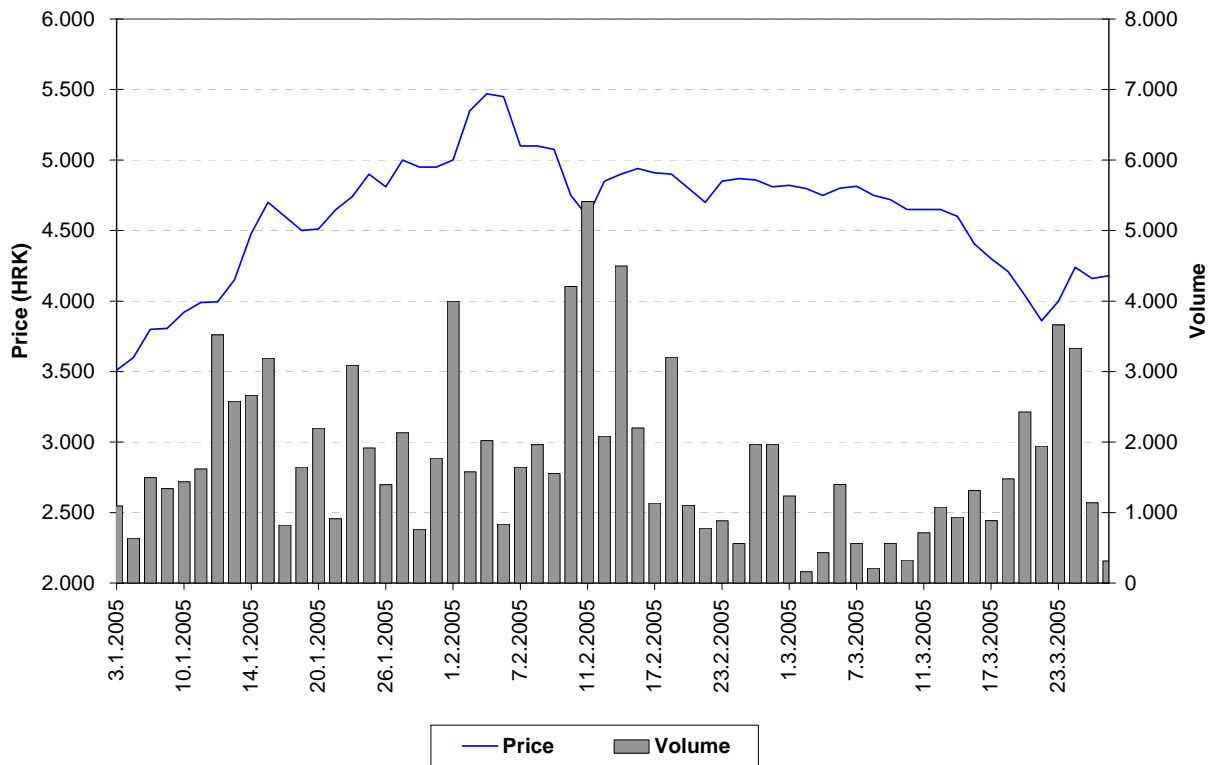


Chart 7: ADRIS GRUPA d.d., preferred stocks

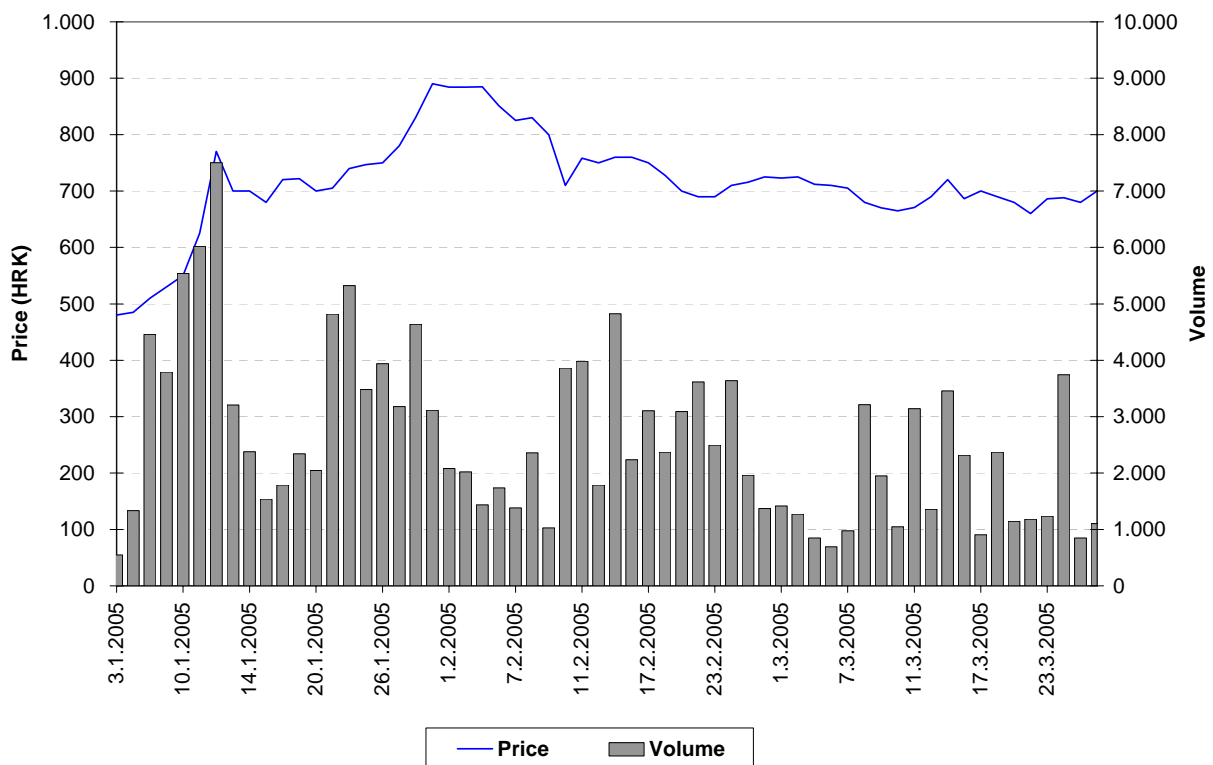


Chart 8: Atlantska plovidba d.d.

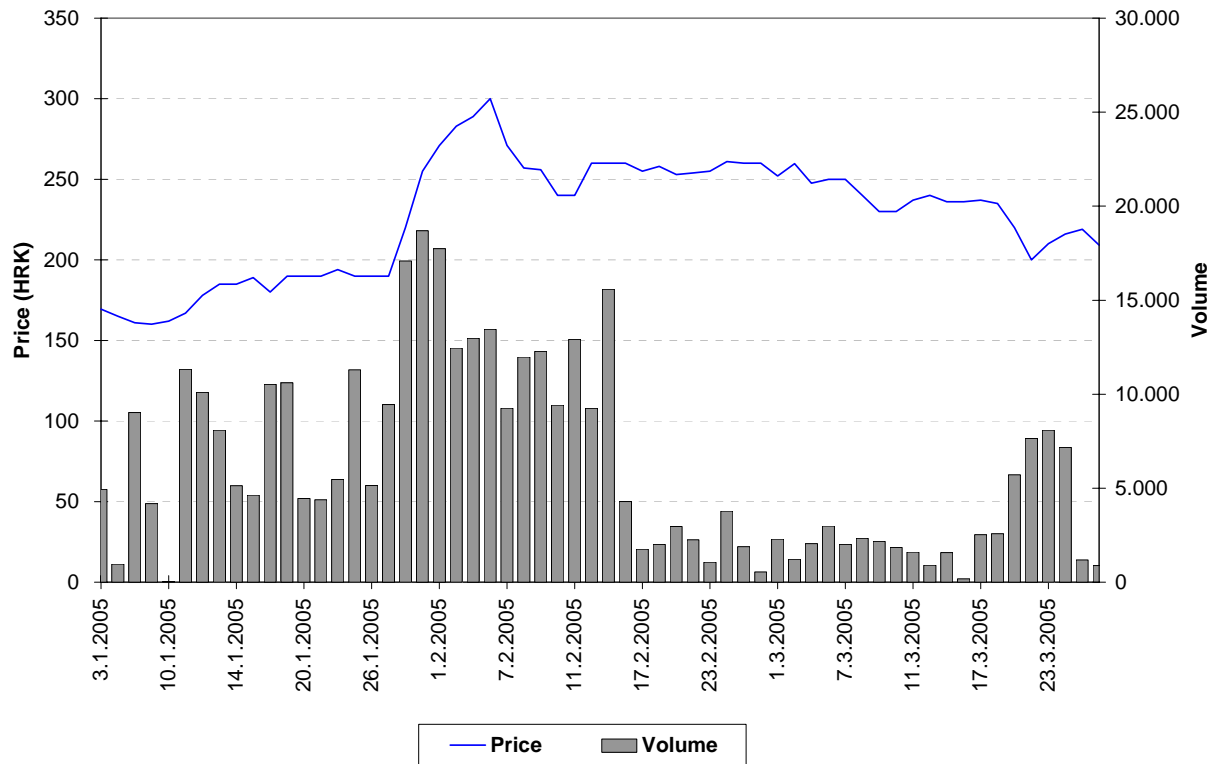


Chart 9: Končar Elektroindustrija d.d.

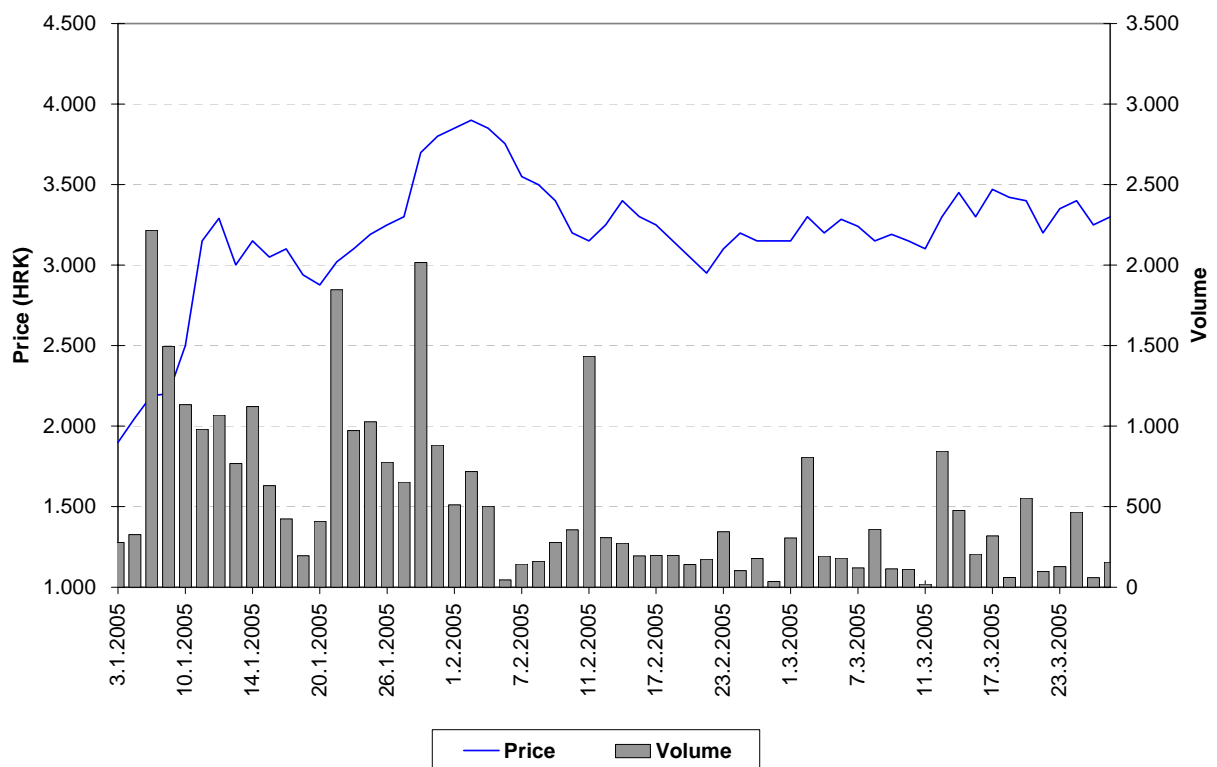


Chart 10: Tankerska plovidba d.d.

4. Listed shares

Symbol	Company name	Shares outstanding	Nominal value
Official Market			
Common stocks			
CROS-R-A	Croatia osiguranje d.d.	307.598	1400 HRK
PLVA-R-A	PLIVA d.d.	18.592.648	100 HRK
PODR-R-A	Podravka prehrambena industrija d.d.	5.420.003	300 HRK
Preferred stocks			
CROS-P-A	Croatia osiguranje d.d.	8.750	1400 HRK
JDD Market			
Common stocks			
ADCH-R-A	Adriachem d.d.	623.578	300 HRK
ADHT-R-A	Adriatic d.d.	337.480	200 HRK
ADPL-R-A	AD Plastik d.d.	2.939.709	100 HRK
ADRS-R-A	ADRIS GRUPA d.d.	961.590	100 HRK
AGLG-R-A	AGROLAGUNA d.d.	28.487	2500 HRK
AMDN-R-A	Apartmani Medena d.d.	765.376	300 HRK
ARNT-R-A	Arenaturist d.d.	2.182.500	300 HRK
ATLS-R-A	Atlas turistička agencija d.d.	1.910.008	100 HRK
ATPL-R-A	Atlantska plovidba d.d.	1.362.260	300 HRK
AUHR-R-A	Auto-Hrvatska d.d.	17.885	3700 HRK
BD62-R-A	Badel 1862 d.d.	752.106	300 HRK
BDMR-R-A	Brodmerkur d.d.	99.331	1900 HRK
BLSC-R-A	Belišće d.d.	1.164.312	300 HRK
CEBA-R-A	Centar banka d.d.	221.749	400 HRK
CHBL-R-A	Chromos boje i lakovi d.d.	287.740	300 HRK
CRAL-R-A	Croatia Airlines d.d.	4.349.279	200 HRK
CRBT-R-A	Croatia Baterija d.d.	180.090	300 HRK
DABA-R-A	Nova banka d.d.	2.276.398	200 HRK
DALS-R-A	Dalma d.d.	1.225.790	100 DEM
DKVS-R-A	Đakovština d.d.	793.021	300 HRK
DLKV-R-A	Dalekovod	2.293.812	100 HRK
DLMC-R-A	Dalmacijacement RMC Group d.d.	1.700.000	700 HRK
DMUS-R-A	Domus d.d.	428.676	100 HRK
DRNJ-R-A	Drvenjača d.d.	223.990	300 HRK
DTR-R-A	Domaća tvornica rublja d.d.	107.850	100 DEM
ELKA-R-A	EIG d.d.	1.588.320	300 HRK
ELKP-R-A	Elektroprojekt d.d.	89.800	100 DEM
ELPR-R-A	Elektropromet d.d.	334.860	300 HRK
ERNT-R-A	Ericsson Nikola Tesla d.d.	1.331.650	200 HRK
EXCL-R-A	Excelsior d.d.	474.947	100 HRK
EXPD-R-A	Exportdrvo d.d.	159.064	400 HRK
FNVC-R-A	Finvest Corp d.d.	617.751	400 HRK
FRNK-R-A	Franek d.d.	427.170	600 HRK
GHPA-R-A	Grand Hotel Park d.d.	139.895	400 HRK
GPDU-R-A	GP Dubrovnik d.d.	128.835	300 HRK
HBEL-R-A	Hotel Bellevue d.d.	43.834	300 HRK

Symbol	Company name	Shares outstanding	Nominal value
HCRC-R-A	Hoteli Croatia d.d.	1.079.040	100 HRK
HDEL-R-A	Hidroelektra niskogradnja d.d.	623.881	100 HRK
HDUZ-R-A	Hotel Dubrovnik d.d.	267.200	100 DEM
HICZ-R-B	Hotel Opera d.d.	869.876	200 HRK
HMAM-R-A	Hoteli Makarska d.o.o.	1.119.470	200 HRK
HMLN-R-A	Hoteli Mlini d.d.	780.364	100 HRK
HMST-R-A	Hoteli Maestral d.d.	515.720	200 HRK
HPDG-R-A	Hoteli Podgora d.d.	366.250	100 DEM
HRDH-R-A	Hrvatski Duhani d.d.	842.807	300 HRK
HSTS-R-A	Hotel Split d.d.	36.323	3100 HRK
HTCP-R-A	Hoteli Tučepi d.d.	548.200	300 HRK
HUPZ-R-A	HUP Zagreb d.d.	513.333	400 HRK
IGH-R-A	Institut građevinarstva Hrvatske d.d.	158.580	400 HRK
IKBA-R-A	Istarska kreditna banka d.d.	57.487	1100 HRK
ILRA-R-A	Ilirija d.d.	249.386	390 HRK
INDG-R-A	Industrogradnja d.d.	125.072	2700 HRK
INKR-R-A	Lasselsberger industrija keramike i porculana d.d.	1.451.886	100 HRK
ISTT-R-A	Istraturist Umag d.d.	4.674.995	100 HRK
JDBA-R-A	Jadranska banka d.d.	36.400	2000 HRK
JDKM-R-A	Jadrnkamen d.d.	217.330	100 DEM
JDPL-R-A	Jadroplov d.d.	1.636.674	360 HRK
JMNC-R-A	Jamnica d.d.	22.126	3800 HRK
JNAF-R-A	Jadranski naftovod d.d.	742.846	2700 HRK
KABA-R-A	Karlovačka banka d.d.	669.795	100 HRK
KBZ-R-A	Kreditna banka Zagreb d.d.	1.319.945	100 HRK
KNZM-R-A	Konzum d.d.	126.127	1800 HRK
KODT-R-A	Končar-distributivni i specijalni transformatori d.d.	73.313	300 HRK
KOEI-R-A	Končar elektroindustrija d.d.	2.517.053	400 HRK
KOSK-R-A	Končar Sklopna postrojenja d.d.	68.842	300 HRK
KRAS-R-A	Kraš d.d.	1.373.621	400 HRK
KTKS-R-A	Koteks d.d.	669.467	100 HRK
LANO-R-A	Laguna Novigrad d.d.	322.790	370 HRK
LEDO-R-A	Ledo d.d.	220.170	380 HRK
LKRI-R-A	Luka Rijeka d.d.	3.011.830	100 HRK
LLRB-R-A	Lola Ribar d.d.	127.139	400 HRK
LPML-R-A	Lipa Mill d.d.	70.833	720 HRK
LRH-R-A	Liburnia Riviera hoteli d.d.	302.641	3200 HRK
LURA-R-A	Lura d.d.	3.000.000	100 HRK
LVCV-R-A	Lavčević d.d.	465.656	300 HRK
MAGE-R-A	Marin Getaldić d.d.	180.608	50 DEM
MAIS-R-A	MAISTRA d.d.	10.257.393	-
MDKA-R-A	Medika d.d.	30.194	500 DEM
MLNR-R-A	Mlinar d.d.	195.409	400 HRK
MMBA-R-A	Međimurska banka d.d.	319.750	400 HRK
MSLK-R-A	Moslavka d.d.	191.732	200 HRK
NVBA-R-A	Nava banka d.d.	101.610	400 HRK
PABA-R-A	Partner banka d.d.	891.000	100 HRK
PBZ-R-A	Privredna banka Zagreb d.d.	16.660.000	100 HRK
PLAG-R-A	Plava Laguna d.d.	546.318	1800 HRK
PLTO-R-A	PLUTO d.d.	87.440	400 HRK

Symbol	Company name	Shares outstanding	Nominal value
POBA-R-A	Požeška banka d.d.	320.000	200 HRK
PRHN-RA	Prehrana d.d.	129.950	300 HRK
PTKM-R-A	Petrokemija d.d.	2.471.721	400 HRK
RIBA-R-A	Erste & Steiermarkische bank d.d.	13.242.478	100 HRK
RIZO-R-A	RIZ-ODAŠILJAČI d.d.	135.902	100 DEM
SDBA-R-A	BANKA SPLITSKO-DALMATINSKA d.d.	234.720	100 HRK
SLDM-R-A	Slobodna dalmacija d.d.	707.986	100 HRK
SLRS-R-A	Solaris d.d.	726.990	100 DEM
SSNC-R-A	Banka Sonic d.d.	61.800	500 HRK
TANG-R-A	TANG tvornica alata d.d.	113.874	600 HRK
TDZ-R-A	Tvornica duhana Zagreb d.d.	324.808	700 HRK
TEP-R-A	TEP Tvornica elektrotehničkih proizvoda d.d.	377.847	200 HRK
THNK-R-A	Tehnika d.d.	189.460	900 HRK
TISK-R-A	Tisak d.d.	2.386.587	100 HRK
TLM-R-A	TLM Tvornica lakih metala d.d.	1.840.082	300 HRK
TMPO-R-A	TEMPO d.d.	607.952	100 HRK
TNPL-R-A	Tankerska plovidba d.d.	626.385	600 HRK
TOZ-R-A	TOZ Penkala, Tvornica olovaka Zagreb d.d.	246.930	300 HRK
TSTR-R-A	Tekstilstroj d.d.	114.442	300 HRK
ULPL-R-A	Uljanik plovidba d.d.	122.756	400 HRK
ULJN-R-A	ULJANIK d.d.	2.236.253	300 HRK
UNPP-R-A	Unijapapir d.d.	19.210	1800 HRK
VDKT-R-A	Viadukt d.d.	345.820	300 HRK
VJSN-R-A	Vjesnik d.d.	1.061.683	100 HRK
ZABA-R-A	Zagrebačka banka d.d.	2.873.603	380 HRK
ZAPI-R-A	Zagrebačka pivovara d.d.	620.450	100 DEM
ZLJS-R-A	Željezara Split d.d.	113.216	1200 HRK
ZPKL-R-A	Zagrebačke pekarnice Klara d.d.	283.760	400 HRK
	JDD Market		
	Preferred stocks		
ADRS-P-A	ADRIS GRUPA d.d.	678.410	100 HRK
CRAL-P-A	Croatia Airlines d.d.	17.590	100 HRK
CRAL-P-A1	Croatia Airlines d.d.	6.762	100 HRK
CRAL-P-A2	Croatia Airlines d.d.	13.025	100 HRK
CRAL-P-A3	Croatia Airlines d.d.	7.356	100 HRK
CRAL-P-A4	Croatia Airlines d.d.	6.464	100 HRK
IKBA-P-A	Istarska kreditna banka d.d.	1.513	1100 HRK
KABA-P-A	Karlovačka banka d.d.	10.824	100 HRK
KODT-P-A	Končar-Distributivni i specijalni transformatori d	30.714	300 HRK
KOSK-P-A	Končar Sklopna postrojenja d.d.	40.718	300 HRK
PLAG-P-A	Plava Laguna d.d.	105.000	1000 HRK
SDBA-P-A	BANKA SPLITSKO-DALMATINSKA d.d.	66.680	100 HRK
SSNC-P-A1	Banka Sonic d.d.	18.200	500 HRK
ZABA-P-B	Zagrebačka banka d.d.	11.325	540 HRK
	Parallel Market		
	Common stocks		
BLVD-R-A	Belvedere d.d.	349.080	300 HRK
CHAG-R-A	CHROMOS AGRO d.d.	125.977	500 HRK
CRLI-R-A	Croatia Lloyd d.d.	145.076	800 HRK
DKST-R-A	DK "STOLARIJA" d.d.	5.484	500 DEM
FRMC-R-A	Farmacija d.d.	16.835	1200 HRK

Symbol	Company name	Shares outstanding	Nominal value
GHAD-R-A	Grand Hotel Adriatic d.d.	170.800	100 DEM
GKBA-R-A	Gospodarsko-kreditna banka d.d.	627.720	100 HRK
HARG-R-A	Hoteli Argentina d.d.	185.960	300 HRK
HBRL-R-A	Hoteli Brela d.d.	525.270	100 DEM
HIMR-R-A	Imperial d.d.	635.855	200 DEM
HPRK-R-A	Hotel Park d.d.	3.000	3000 HRK
HRBC-R-A	Rabac, ugostiteljstvo i turizam d.d.	1.012.220	100 DEM
HSRE-R-A	Hoteli Srebreno d.d.	482.000	100 HRK
IKOM-R-A	IKOM Industrija komunalne opreme i mjerila d.d.	78.142	100 DEM
IMES-R-A	Imes d.d.	53.276	100 DEM
IPKK-R-A	IPK KANDIT d.d.	543.490	100 HRK
IPKT-R-A	IPK TVORNICA ULJA ČEPIN d.d.	564.694	100 HRK
JLSA-R-A	Jelsa d.d.	1.057.758	100 HRK
JTMN-R-A	Jadran d.d. Tvornica metalnog namještaja	173.560	300 HRK
KAPI-R-A	Karlovačka pivovara d.d.	511.245	400 HRK
KMKA-R-A	Kemika d.d.	95.259	300 HRK
KODS-R-A	Kordun Slunj d.d.	106.427	100 HRK
KORF-R-A	DOM HOLDING d.d.	8.113.359	100 HRK
KRDN-R-A	Kordun d.d. Karlovac	256.320	100 DEM
KRMT-R-A	Kerametal d.d.	108.923	100 DEM
KRNA-R-A	Korana d.d.	200.406	200 HRK
LOVI-R-A	Lovinčić d.d.	419.506	200 HRK
MLDN-R-A	Mladina d.d.	96.098	300 HRK
MCML-R-A	MACROMEL d.d.	150.000	10.000 HRK
MRNR-R-A	Mornar d.d.	52.510	100 DEM
MSLK-R-A	Moslavka d.d.	191.732	200 HRK
NACE-R-A	Našicecement d.d.	644.329	400 HRK
NMAZ-R-A	NAMA d.d.	230.422	1000 DEM
PRFC-R-A	PROFICIO d.d.	3.912.908	100 HRK
PSBA-R-A	Primus banka d.d.	101.700	500 HRK
PUNT-R-A	POUNJE Trikotaža d.d.	266.000	100 HRK
PZDL-R-A	Požeška dolina d.d.	120.339	100 DEM
RIVP-R-A	Riviera Holding d.d.	3.653.517	300 HRK
RTKO-R-A	Riječka tvornica konopa d.d.	130.260	200 HRK
SLBA-R-A	Slavonska banka d.d.	284.941	1300 HRK
SLPG-R-A	Solana Pag d.d.	75.846	100 DEM
SNHO-R-A	SN Holding d.d.	3.377.441	100 HRK
SPTH-R-A	Svpetrvs hoteli d.d.	395.148	100 HRK
STBA-R-A	Splitska banka d.d.	3.634.783	100 HRK
SUNH-R-A	Sunčani Hvar d.d.	3.310.971	100 HRK
TRUM-R-A	Trgopromet Umag d.d.	214.072	100 HRK
ZITP-R-A	Žitoproizvod d.d.	109.300	400 HRK
ZLAR-R-A	Zlatni rat d.d.	552.319	100 DEM
ZVZD-R-A	ZVIJEZDA d.d.	100.257	2000 HRK
	Parallel Market		
	Closed investments funds		
SLPF-R-A	Slavonski ZIF, d.d.	3.346.418	100 HRK
VLBT-R-A	Velebit - ZIF, d.d.	3.406.550	100 HRK
	Parallel Market		
	Preferred stocks		

Symbol	Company name	Shares outstanding	Nominal value
GKBA-P-A	Gospodarsko-kreditna banka d.d.	220.000	100 HRK
SPTH-P-A	Svpetrvs hoteli d.d.	45.952	100 HRK

5. Listed Bonds

Symbol	Issuer	Nominal value	Issued volume	Interest	Maturity
Official Market					
AGKR-O-074A	AGROKOR d.d.	1 EUR	230.000.000	11%	3.4.2007
ATGR-O-074A	ATLANTIC GRUPA d.o.o.	1 EUR	15.000.000	5,75%	13.7.2007
BLSC-O-091	Belišće d.d.	1 EUR	8.000.000	5,500%	14.1.2009
BNAI-O-22CA	Bina Istra d.d.	1 EUR	210.000.000	8%	15.12.2022
DAB-O-05CA	State Agency for Deposit Insurance and Bank Rehabilitation	1 EUR	225.000.000	8,375%	19.12.2005
FNOI-D-057A	Fund for the Restitution of Deprived Property	5.11 EUR	422.310	\	1.7.2005
FNOI-D-061A	Fund for the Restitution of Deprived Property	5.11 EUR	422.310	\	1.1.2006
FNOI-D-067A	Fund for the Restitution of Deprived Property	5.11 EUR	422.310	\	1.7.2006
FNOI-D-071A	Fund for the Restitution of Deprived Property	5.11 EUR	422.310	\	1.1.2007
FNOI-D-077A	Fund for the Restitution of Deprived Property	5.11 EUR	422.310	\	1.7.2007
FNOI-D-081A	Fund for the Restitution of Deprived Property	5.11 EUR	422.310	\	1.1.2008
FNOI-D-087A	Fund for the Restitution of Deprived Property	5.11 EUR	422.310	\	1.7.2008
FNOI-D-091A	Fund for the Restitution of Deprived Property	5.11 EUR	422.310	\	1.1.2009
FNOI-D-097A	Fund for the Restitution of Deprived Property	5.11 EUR	422.310	\	1.7.2009
FNOI-D-101A	Fund for the Restitution of Deprived Property	5.11 EUR	422.310	\	1.1.2010
FNOI-D-107A	Fund for the Restitution of Deprived Property	5.11 EUR	422.310	\	1.7.2010
FNOI-D-111A	Fund for the Restitution of Deprived Property	5.11 EUR	422.310	\	1.1.2011
FNOI-D-117A	Fund for the Restitution of Deprived Property	5.11 EUR	422.310	\	1.7.2011
FNOI-D-121A	Fund for the Restitution of Deprived Property	5.11 EUR	422.310	\	1.1.2012
FNOI-D-127A	Fund for the Restitution of Deprived Property	5.11 EUR	422.310	\	1.7.2012
FNOI-D-131A	Fund for the Restitution of Deprived Property	5.11 EUR	422.310	\	1.1.2013
FNOI-D-137A	Fund for the Restitution of Deprived Property	5.11 EUR	422.310	\	1.7.2013
FNOI-D-141A	Fund for the Restitution of Deprived Property	5.11 EUR	422.310	\	1.1.2014
FNOI-D-147A	Fund for the Restitution of Deprived Property	5.11 EUR	422.310	\	1.7.2014
FNOI-D-151A	Fund for the Restitution of Deprived Property	5.11 EUR	422.310	\	1.1.2015
FNOI-D-157A	Fund for the Restitution of Deprived Property	5.11 EUR	422.310	\	1.7.2015
FNOI-D-161A	Fund for the Restitution of Deprived Property	5.11 EUR	422.310	\	1.1.2016
FNOI-D-167A	Fund for the Restitution of Deprived Property	5.11 EUR	422.310	\	1.7.2016
FNOI-D-171A	Fund for the Restitution of Deprived Property	5.11 EUR	422.310	\	1.1.2017
FNOI-D-177A	Fund for the Restitution of Deprived Property	5.11 EUR	422.310	\	1.7.2017
FNOI-D-181A	Fund for the Restitution of Deprived Property	5.11 EUR	422.310	\	1.1.2018
FNOI-D-187A	Fund for the Restitution of Deprived Property	5.11 EUR	422.310	\	1.7.2018
FNOI-D-191A	Fund for the Restitution of Deprived Property	5.11 EUR	422.310	\	1.1.2019
FNOI-D-197A	Fund for the Restitution of Deprived Property	5.11 EUR	422.310	\	1.7.2019
GDKC-O-116A	City of Koprivnica	1 HRK	60.000.000	6,5%	29.6.2011
GDZD-O-119A	City of Zadar	1 EUR	18.500.00	5,5%	1.9.2011
HBOR-O-112A	Croatian bank for reconstruction and development	1 EUR	300.000.000	4,875%	11.2.2011
HYBA-O-086A	Hypo Alpe-Adria Bank d.d.	1 HRK	150.000.000	6.500%	6.6.2008
PLVA-O-115A	PLIVA d.d.	1 EUR	75.000.000	5,750%	12.5.2011
PODR-O-072A	Podravka d.d.	1 EUR	27.000.000	5,000%	20.2.2007

Symbol	Issuer	Nominal value	Issued volume	Interest	Maturity
RHMF-O-077A	Republic of Croatia	1 EUR	400.000.000	3,875%	7.7.2007
RHMF-O-085A	Republic of Croatia	1 HRK	1.000.000.000	6.125%	28.5.2008
RHMF-O-08CA	Republic of Croatia	1 EUR	200.000.000	6,875%	14.12.2008
RHMF-O-103A	Republika Hrvatska	1 HRK	3.000.000.000	6,750%	8.3.2010
RHMF-O-125A	Republic of Croatia	1 EUR	500.000.000	6.875%	23.5.2012
RHMF-O-142A	Republic of Croatia	1 EUR	650.000.000	5,500%	10.2.2014
RHMF-O-19BA	Republic of Croatia	1 EUR	200.000.000	5,375%	29.11.2019

6. Listed Certificates

Symbol	Issuer	Nominal value	Issued volume
RHMJ-A-A	Republic of Croatia, Ministry of Construction	1 HRK	400.000.000
RHMF-A-A	Republic of Croatia, Ministry of Finance	1 HRK	644.750.000

7. Listed Commercial Papers

Symbol	Issuer	Nominal value	Issued volume
Regular Market			
MDKA-M-528A	Medika d.d.	1 HRK	60.000.000

8. Methodological remarks

- 1) High is the highest trading price for the share in the selected period of time.
- 2) Low is the lowest trading price for the share in the selected period of time.
- 3) Last is the price of the last trade for the share in the selected period of time.
- 4) Market capitalization of the whole Exchange is calculated by multiplying the last price and the number of outstanding shares. If the share was not traded in the last month, one half of the market capitalization is added to the market capitalization of the whole Exchange. If the share was not traded in the last three months, only one quarter of the market capitalisation is added to the market capitalization of the whole Exchange.
- 5) The performance of shares is calculated with the last prices in the compared periods.
- 6) For the price curve daily closing prices are used.
- 7) Reported trades are trades with bonds greater then 3,000,000 HRK in accordance with the Zagreb Stock Exchange Rules.
- 8) Institutional trades are trades reported to the Zagreb Stock Exchange by intitutional investors in accordance with Securities Law.