

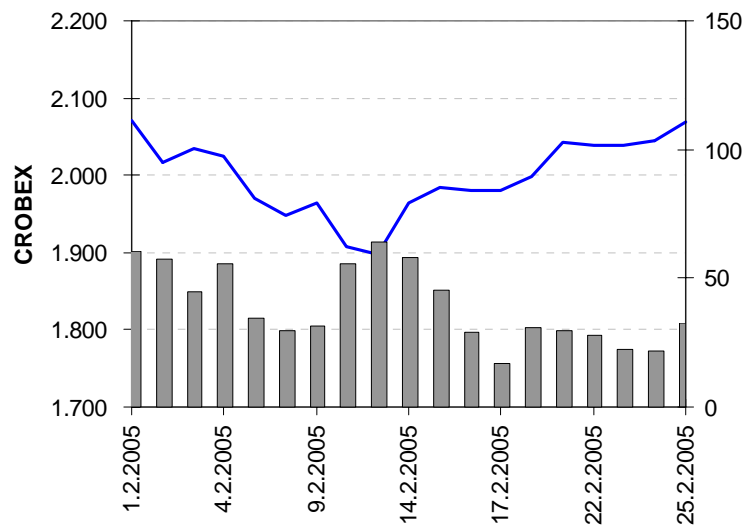


ZAGREBAČKA BURZA
THE ZAGREB STOCK EXCHANGE

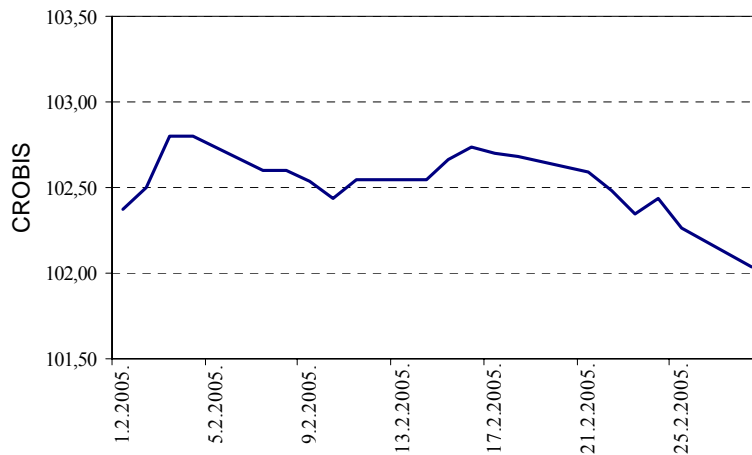
Monthly Report February 2005

(turnover in HRK, and market capitalization in millions of HRK)

	January	February	% change
Turnover :			
Stocks	623.294.599	780.482.505	25,2
Bonds	36.815.490	37.685.652	2,4
Reported turnover	216.330.935	270.974.372	25,3
Institutional turnover	1.359.448.373	1.648.984.715	21,3
Total turnover	2.235.889.398	2.738.127.245	22,5
Volume :			
Stocks	1.470.948	1.717.264	16,7
Bonds	15.822.513	32.822.196	107,4
Reported volume	35.150.000	42.120.000	19,8
Institutional volume	285.701.500	361.664.300	26,6
Total volume	338.144.961	438.323.760	29,6
CROBEX	1.923,50	2.085,50	8,4
CROBIS	102,6598	102,0353	-0,6
Number of trades	14.602	13.708	-6,1
Number of securities traded	86	115	33,7
Market capitalization			
Stocks	73.268,8	78.166,9	6,7
Bonds	23.411,8	22.375,4	-4,4
Total	96.680,6	100.542,3	4,0
Number of trading days	20	20	0,0
Average daily :			
Turnover	111.794.470	136.906.362	22,5
Volume	16.907.248	21.916.188	29,6
Number of trades	730	685	-6,1



Zagreb Stock Exchange stock price index CROBEX and stocks turnover



Zagreb Stock Exchange bond index CROBIS

Most active stocks by turnover

	Symbol	Turnover (HRK)	Pct. of total turnover	Cumulative percentage
1	ADRS-P-A	214.997.136	27,6	27,6
2	PLVA-R-A	97.711.017	12,5	40,1
3	PODR-R-A	90.735.235	11,6	51,7
4	KOEI-R-A	42.350.780	5,4	57,1
5	ATPL-R-A	38.030.093	4,9	62,0
6	PTKM-R-A	33.698.195	4,3	66,3
7	ERNT-R-A	30.431.788	3,9	70,2
8	TNPL-R-A	20.996.617	2,7	72,9
9	IGH-R-A	18.938.959	2,4	75,3
10	MDKA-R-A	14.703.965	1,9	77,2
	Others	177.888.721	22,8	100,0
	Total	780.482.505		

Equity Trading Summary

(prices and turnover are in HRK, and market capitalization is in millions of HRK)

	High	Low	Close	Date of last trade	Net change %	Volume	Turnover	Market capitalization
Official Market								
CROS-P-A	5.400,00	4.580,00	5.300,00	25.2.2005	17,8	1.313	6.598.076	46,4
CROS-R-A	6.075,00	4.700,00	6.000,00	28.2.2005	27,7	1.696	9.043.199	1.845,6
PLVA-R-A	435,00	364,00	429,00	28.2.2005	20,2	244.289	97.711.017	7.976,2
PODR-R-A	365,00	280,00	320,04	28.2.2005	-1,5	282.386	90.735.235	1.734,6
Market JDD								
ADHT-R-A	120,00	120,00	120,00	1.2.2005	0,0	110	13.200	40,5
ADRS-P-A	5.500,00	4.430,00	4.810,00	28.2.2005	-2,8	43.586	214.997.136	3.263,2
ARNT-R-A	250,00	189,00	245,00	28.2.2005	-2,0	18.985	4.345.691	534,7
ATLS-R-A	98,76	80,00	85,00	25.2.2005	-8,1	23.682	2.147.948	162,4
ATPL-R-A	900,00	611,00	725,02	28.2.2005	-18,5	50.384	38.030.093	987,7
AUHR-R-A	5.000,00	5.000,00	5.000,00	22.2.2005	0,0	1	5.000	89,4
BD62-R-A	290,00	220,00	269,89	28.2.2005	8,0	15.392	4.050.313	203,0
BDMR-R-A	970,00	970,00	970,00	17.2.2005	5,0	1	970	96,4
BLSC-R-A	380,00	301,00	340,04	28.2.2005	-8,1	5.794	2.027.488	395,9
CEBA-R-A	355,00	340,00	355,00	24.2.2005	18,3	487	170.080	78,7
DABA-R-A	800,01	780,00	800,00	22.2.2005	2,6	8.344	6.670.542	1.821,1
DLKV-R-A	480,01	320,00	395,00	28.2.2005	-11,6	33.590	13.841.483	906,1
ELKA-R-A	144,99	111,21	125,00	28.2.2005	-7,4	5.276	685.272	198,5
ELPR-R-A	349,99	270,00	300,00	28.2.2005	-9,1	21.985	6.895.518	100,5
ERNT-R-A	2.300,00	1.700,00	2.200,00	28.2.2005	6,3	13.771	30.431.788	2.929,6
EXCL-R-A	160,01	150,00	150,00	10.2.2005	-8,8	135	21.251	71,2
FNVC-R-A	270,00	250,00	250,00	24.2.2005	-10,7	440	113.000	154,4
FRNK-R-A	1.700,00	1.300,00	1.302,00	28.2.2005	-6,3	2.147	3.089.945	556,2
GHPA-R-A	400,00	400,00	400,00	15.2.2005	0,0	40	16.000	56,0
HICZ-R-B	400,00	360,00	399,99	17.2.2005	29,0	274	106.564	347,9
HMAM-R-A	155,00	150,00	155,00	18.2.2005	6,9	222	33.880	173,5
HRDH-R-A	150,00	118,02	133,04	28.2.2005	-8,2	8.409	1.204.606	112,1
HUPZ-R-A	650,00	490,00	560,00	28.2.2005	23,1	865	489.749	287,5
IGH-R-A	2.800,00	2.000,00	2.410,01	28.2.2005	-10,7	7.581	18.938.959	382,2
INDG-R-A	525,00	460,01	460,01	24.2.2005	-8,0	105	53.115	57,5
ISTT-R-A	230,00	176,00	210,00	28.2.2005	-2,3	23.683	5.041.244	981,7
JDBA-R-A	5.500,00	4.380,00	4.850,00	28.2.2005	7,8	561	2.681.560	176,5
JDPL-R-A	365,00	275,00	297,00	28.2.2005	-18,6	12.058	3.779.238	486,1
JDTT-R-A	199,00	160,00	176,50	28.2.2005	4,4	15.560	2.839.158	754,4
JMNC-R-A	18.000,00	17.999,00	18.000,00	2.2.2005	9,1	25	449.993	398,3
JNAF-R-A	2.570,00	1.650,00	2.400,00	28.2.2005	47,2	6.157	14.117.821	1.782,8
KABA-R-A	173,00	149,00	167,97	24.2.2005	1,8	2.314	386.093	112,5
KBZ-R-A	91,00	90,00	90,00	21.2.2005	13,9	8.190	737.600	118,8
KNZM-R-A	2.900,00	2.700,00	2.900,00	28.2.2005	11,5	102	285.050	365,8
KODT-P-A	500,00	450,00	450,00	28.2.2005	-3,2	1.064	524.280	13,8
KODT-R-A	650,00	540,00	550,00	16.2.2005	1,9	350	194.500	40,3
KOEI-R-A	310,00	220,02	259,94	28.2.2005	1,9	157.856	42.350.780	654,3
KRAS-R-A	580,00	430,00	450,11	28.2.2005	-6,2	25.294	12.503.977	618,3
LLRB-R-A	200,00	170,00	170,00	28.2.2005	4,9	1.638	322.022	21,6
LRH-R-A	1.950,00	1.950,00	1.950,00	8.2.2005	0,0	10	19.500	590,1
LURA-R-A	350,00	300,00	300,00	22.2.2005	-3,2	1.033	332.715	900,0
MDKA-R-A	8.290,00	7.700,00	8.150,00	28.2.2005	-1,2	1.835	14.703.965	246,1
MMBA-R-A	600,00	507,02	580,00	22.2.2005	14,4	88	50.928	185,5
PBZ-R-A	660,00	571,00	650,00	28.2.2005	10,2	3.870	2.400.412	10.829,0
PLAG-R-A	2.950,00	2.500,00	2.700,00	28.2.2005	0,0	2.759	7.461.074	1.475,1
POBA-R-A	200,00	126,00	189,77	28.2.2005	89,8	62.239	10.718.289	60,7
PTKM-R-A	99,50	77,00	87,03	28.2.2005	-7,4	382.730	33.698.195	215,1
RIBA-R-A	375,00	320,00	340,00	25.2.2005	4,0	7.682	2.607.466	4.502,4

	High	Low	Close	Date of last trade	Net change %	Volume	Turnover	Market capitalization
SSNC-P-A1	414,00	414,00	414,00	4.2.2005	0,0	42	17.388	7,5
TDZ-R-A	2.120,00	2.022,72	2.100,00	24.2.2005	-0,9	161	335.513	682,1
THNK-R-A	1.750,00	1.601,00	1.750,00	28.2.2005	9,4	1.177	1.983.515	331,6
TNPL-R-A	3.940,00	2.600,00	3.150,00	28.2.2005	-17,1	6.297	20.996.617	1.973,1
ULPL-R-A	2.340,00	1.730,00	2.000,00	28.2.2005	-11,1	1.410	2.847.241	245,5
VDKT-R-A	370,00	321,00	330,00	28.2.2005	-0,2	4.085	1.397.690	114,1
ZABA-P-B	3.500,00	3.000,00	3.500,00	24.2.2005	36,7	79	240.018	39,6
ZABA-R-A	4.900,00	3.501,00	4.349,00	28.2.2005	17,5	1.357	5.084.385	12.497,3
ZAPI-R-A	4.100,00	3.880,00	3.880,00	24.2.2005	-5,4	910	3.667.196	2.407,3

Parallel Market

CHAG-R-A	1.390,00	1.390,00	1.390,00	22.2.2005	0,0	5	6.950	175,1
GKBA-P-A	100,00	100,00	100,00	28.2.2005	16,3	359	35.900	22,0
HIMR-R-A	215,00	214,00	215,00	23.2.2005	2,4	1.100	236.400	136,7
HRBC-R-A	306,00	255,00	255,00	28.2.2005	-4,9	15.305	4.170.119	258,1
KAPI-R-A	1.900,00	1.713,10	1.713,10	23.2.2005	-9,8	15	26.070	875,8
KORF-R-A	176,00	163,00	176,00	25.2.2005	3,5	69.768	11.903.891	1.428,0
PRFC-R-A	89,50	82,00	82,00	23.2.2005	-8,9	669	57.282	320,9
RIVP-R-A	360,00	279,99	312,01	28.2.2005	-13,3	15.913	5.178.398	1.139,9
SLBA-R-A	2.100,00	1.851,00	2.060,00	28.2.2005	8,4	366	716.875	587,0
SLPF-R-A	63,00	57,00	57,00	24.2.2005	-0,9	30.121	1.855.299	190,7
SNHO-R-A	255,00	239,00	255,00	28.2.2005	10,9	6.739	1.685.282	861,2
SUNH-R-A	119,00	100,00	111,00	28.2.2005	8,8	37.236	4.073.638	367,5
ZLAR-R-A	300,00	143,02	209,99	28.2.2005	27,2	15.762	3.293.863	116,0

Bonds Trading Summary

(prices are % of par value, and turnover is in HRK)

	High	Low	Close	Date of last trade	Volume	Turnover
Regular trades						
FNOI-D-057A	96,45	96,45	96,45	4.2.2005	140.014	10.159
FNOI-D-061A	92,18	92,18	92,18	4.2.2005	140.014	9.709
FNOI-D-067A	88,16	88,16	88,16	4.2.2005	140.014	9.286
FNOI-D-071A	84,26	84,26	84,26	4.2.2005	140.014	8.875
FNOI-D-077A	80,58	80,58	80,58	4.2.2005	140.014	8.488
FNOI-D-081A	77,02	77,02	77,02	4.2.2005	140.014	8.113
FNOI-D-087A	73,64	73,64	73,64	4.2.2005	140.014	7.757
FNOI-D-091A	70,38	70,38	70,38	4.2.2005	140.014	7.413
FNOI-D-097A	67,31	67,31	67,31	4.2.2005	140.014	7.090
FNOI-D-101A	64,33	64,33	64,33	4.2.2005	140.014	6.776
FNOI-D-107A	61,53	61,53	61,53	4.2.2005	140.014	6.481
FNOI-D-111A	58,81	58,81	58,81	4.2.2005	140.014	6.195
FNOI-D-117A	56,24	56,24	56,24	4.2.2005	140.014	5.924
FNOI-D-121A	53,75	53,75	53,75	4.2.2005	140.014	5.662
FNOI-D-127A	51,40	51,40	51,40	4.2.2005	140.014	5.414
FNOI-D-131A	49,12	49,12	49,12	4.2.2005	140.014	5.174
FNOI-D-137A	46,98	46,98	46,98	4.2.2005	140.014	4.948
FNOI-D-141A	44,90	44,90	44,90	4.2.2005	140.014	4.729
FNOI-D-147A	42,95	42,95	42,95	4.2.2005	140.014	4.524
FNOI-D-151A	41,04	41,04	41,04	4.2.2005	140.014	4.323
FNOI-D-157A	39,26	39,26	39,26	4.2.2005	140.014	4.135
FNOI-D-161A	37,52	37,52	37,52	4.2.2005	140.014	3.952
FNOI-D-167A	35,87	35,87	35,87	4.2.2005	140.014	3.778
FNOI-D-171A	34,29	34,29	34,29	4.2.2005	140.014	3.612
FNOI-D-177A	32,79	32,79	32,79	4.2.2005	140.014	3.454
FNOI-D-181A	31,34	31,34	31,34	4.2.2005	140.014	3.301

	High	Low	Close	Date of last trade	Volume	Turnover
FNOI-D-187A	29,97	29,97	29,97	4.2.2005	140.014	3.157
FNOI-D-191A	28,65	28,65	28,65	4.2.2005	140.014	3.018
FNOI-D-197A	27,40	27,40	27,40	4.2.2005	140.014	2.886
HYBA-O-086A	100,90	100,90	100,90	1.2.2005	500.000	504.500
PLVA-O-115A	99,65	99,65	99,65	14.2.2005	66.500	497.163
RHMF-O-085A	102,70	100,30	100,90	28.2.2005	27.059.390	27.435.377
RHMF-O-08CA	111,35	111,35	111,35	16.2.2005	100.000	835.526
RHMF-O-125A	115,80	115,80	115,80	7.2.2005	1.000	8.726
RHMF-O-142A	108,00	106,55	108,00	23.2.2005	129.900	1.045.754
RHMF-O-19BA	106,55	105,25	105,45	23.2.2005	905.000	7.190.274
Total					32.822.196	37.685.653
Reported trades						
DAB-O-05CA	104,50	103,90	104,40	17.2.2005	2.620.000	20.492.421
RHMF-O-077A	100,60	100,20	100,60	11.2.2005	5.000.000	37.776.635
RHMF-O-085A	101,40	100,80	100,80	24.2.2005	10.000.000	10.110.000
RHMF-O-125A	116,35	115,35	115,40	25.2.2005	9.000.000	78.369.902
RHMF-O-142A	107,95	106,70	106,90	24.2.2005	8.500.000	68.608.508
RHMF-O-19BA	106,15	105,10	105,60	25.2.2005	7.000.000	55.616.907
Total					42.120.000	270.974.372
Institutional trades						
BLSC-O-091A	99,74	99,74	99,74	8.2.2005	1.240.000	9.306.879
DAB-O-05CA	104,50	103,55	104,10	28.2.2005	6.561.500	51.434.235
GDKC-O-116A	99,70	99,70	99,70	28.2.2005	5.000.000	4.628.929
HYBA-O-086A	100,85	100,85	100,85	18.2.2005	300.000	302.550
PLVA-O-115A	100,00	100,00	100,00	17.2.2005	36.500	274.310
PODR-O-072A	100,10	99,85	100,10	28.2.2005	790.000	5.936.460
RHMF-O-077A	100,95	99,90	100,35	28.2.2005	19.105.500	144.299.271
RHMF-O-085A	102,30	100,70	100,90	24.2.2005	176.000.000	178.480.000
RHMF-O-08CA	111,15	110,60	110,70	28.2.2005	11.000.000	91.503.758
RHMF-O-125A	116,55	115,35	115,50	28.2.2005	44.361.000	386.292.712
RHMF-O-142A	107,95	106,60	106,75	28.2.2005	45.158.000	363.971.588
RHMF-O-19BA	106,30	99,72	105,60	28.2.2005	52.111.800	412.554.023
Total					361.664.300	1.648.984.715
BONDS TOTAL					436.606.496	1.957.644.741

Open-end funds

(value on 28th February, 2005)

Symbol	Sell/exit price	Buy/entry price	Name
FOIN-U-ORBF	10,72	11,04	Orbis
FOIN-U-VICF	35,50	37,27	Victoria
PBZI-U-EURN	100,88		-PBZ Euro novčani fond
RBAI-U-RBAC	108,68		-Raiffeisen Active
RBAI-U-RBAL	174,21*		- *Raiffeisen Balanced
RBAI-U-RBON	126,30*		- *Raiffeisen Bonds
RBAI-U-RCAF	109,46		-Raiffeisen CASH

* additionally commissions apply

Top 10 Members by Equity Turnover

Rank	Member
1	Zagrebačka banka d.d.
2	Erste vrijednosni papiri d.o.o.
3	Raiffeisenbank Austria d.d.
4	InterFinance d.o.o.
5	Auctor d.o.o.
6	Fima vrijednosnice d.o.o.
7	I.C.F. d.o.o.
8	Ilirika vrijednosni papiri d.o.o.
9	HITA vrijednosnice d.d.
10	Hypo Alpe-Adria-Bank d.d.

Top 10 Members by Bonds Turnover

Rank	Member
1	Interkapital vrijednosni papiri d.o.o.
2	Erste vrijednosni papiri d.o.o.
3	I.C.F. d.o.o.
4	Privredna banka Zagreb d.d.
5	Fima vrijednosnice d.o.o.
6	Zagrebačka banka d.d.
7	HVB Splitska banka d.d.
8	TO ONE brokeri d.o.o.
9	Raiffeisenbank Austria d.d.
10	Hypo Alpe-Adria-Bank d.d.